



Nokia Lumia 822 Basic Disassembly

Illustrates how to disassemble a Lumia 822 without damaging components.

Written By: wingdinger2



iFixit Magnet
Project
Designed in California by iF
Project:

INTRODUCTION

Please read the entire guide before beginning! Most components in this phone are not user replaceable, as they are soldered directly to the logic board. The few that are replaceable will be removed, or at least pointed out in this guide. I am not responsible for any damage your device may incur.



TOOLS:

- [Plastic spudger \(optional\)](#) (1)
 - [Philips 00 Screwdriver](#) (1)
 - [iFixit Opening Tools](#) (1)
 - [T4 Torx Screwdriver](#) (1)
 - [Small flat screwdriver](#) (1)
 - [Precision Utility Knife](#) (1)
-

Step 1 — Nokia Lumia 822 Disassembly.



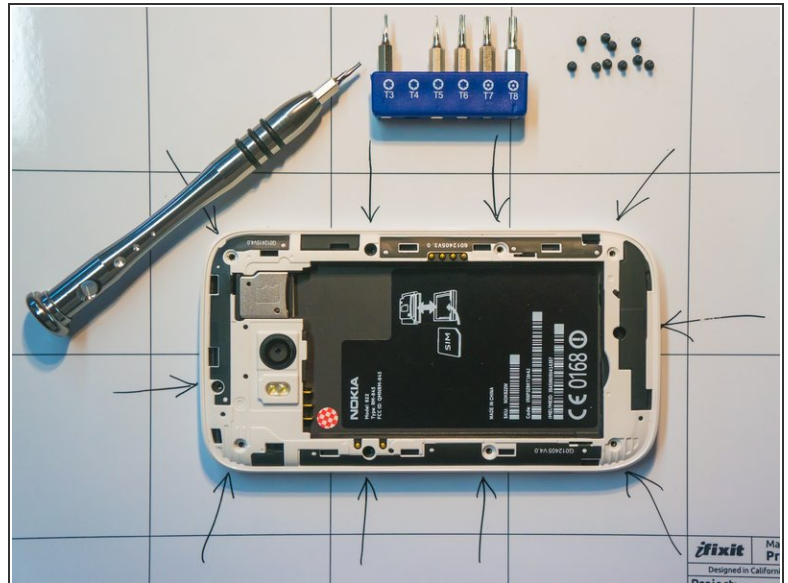
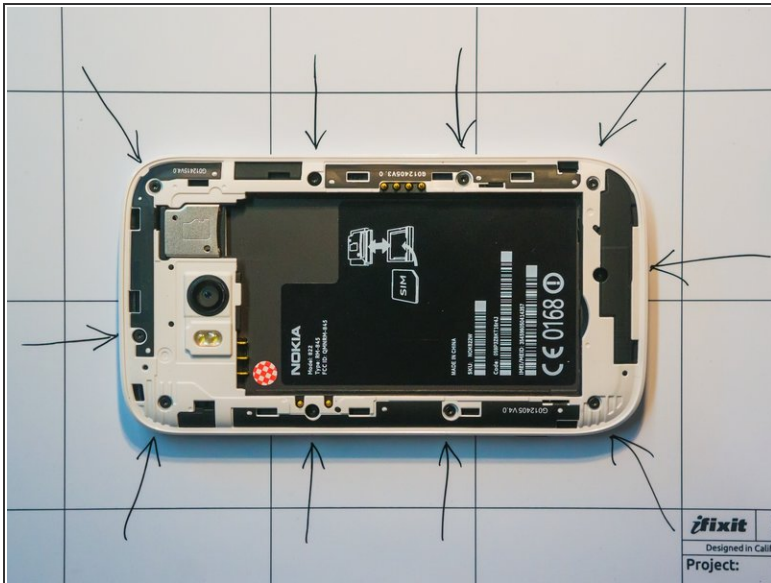
- Power off the phone.

Step 2



- Remove the back cover, the battery, and the sim card with its bracket.

Step 3



- Locate and remove the ten T4 Torx screws around the perimeter of the frame. (indicated by arrows)
- ⚠ These screws have threadlocker on them, the amount varies. Occasionally they are so tight that the head twists off. When reassembling, do NOT overtighten them, as this can crack the LCD.

Step 4



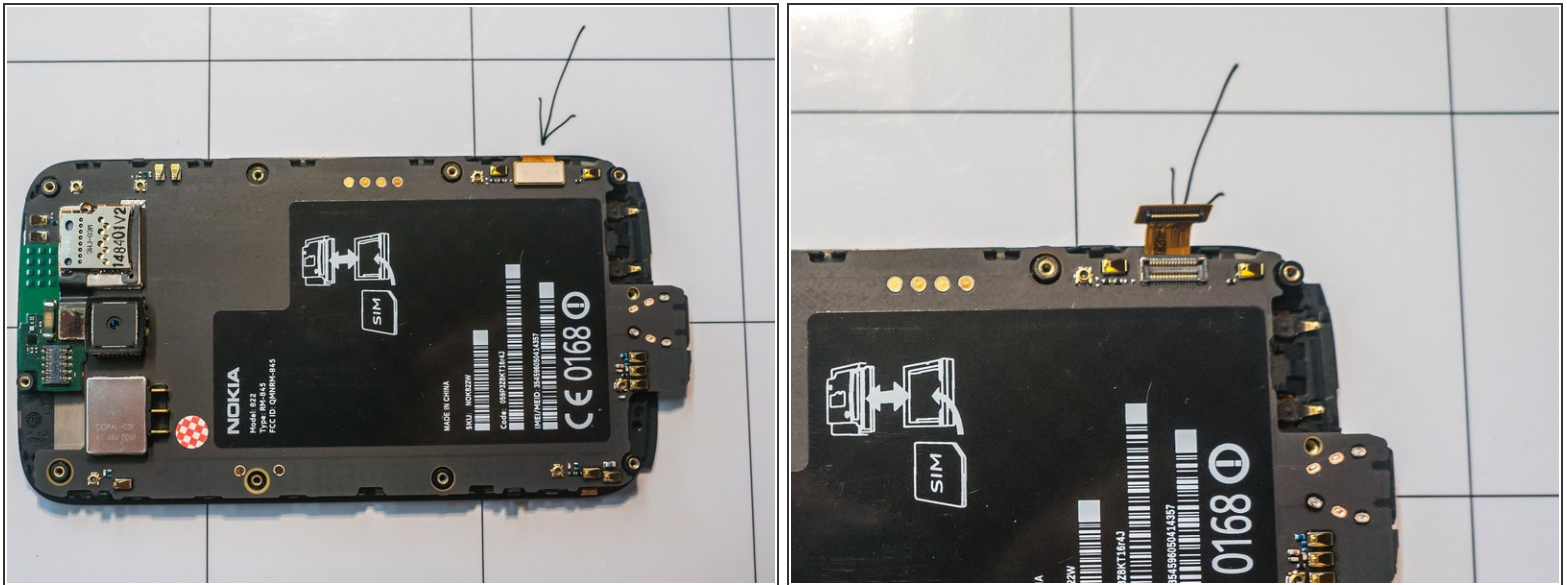
- Hold the top of the phone's frame between your fingers, and gently apply pressure on the back of the LCD assembly. Do not use too much force. Move your thumbs around to apply pressure at various points.
- When viewed from the front, the top left corner of the screen will usually be the first to pop loose.
- Run a plastic opening tool or a thumbnail along the top of the screen to free it from the frame assembly.

Step 5



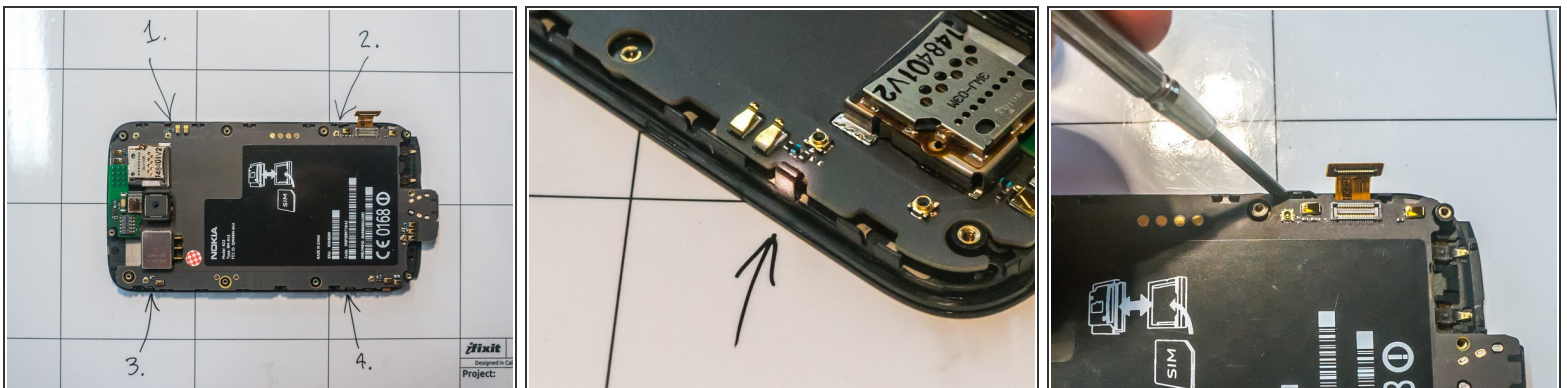
- Once the top of the screen assembly is free, pull it out so it clears the edge of the frame.
- Pull the screen assembly straight up to free the bottom portion from the frame. The frame can now be set aside, as we will concentrate on the screen/logic board assembly.

Step 6



- Locate the ribbon cable on the back of the logic board and carefully loosen the connector with a plastic opening tool. Be sure you are prying on the cable's connector, and not on the plug on the logic board.

Step 7

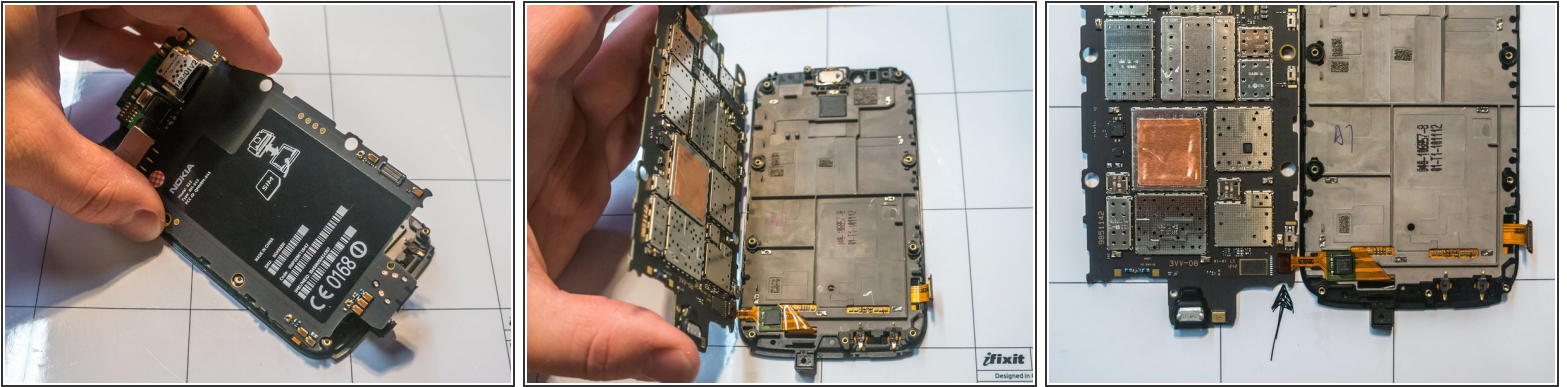


- There are four small plastic clips that hold the logic board to the screen assembly. Using a small flat screwdriver, carefully pull back clips # 1 and 2, (see photo) and free the logic board on that side.




The plastic clips break easily if bent back too far.

Step 8

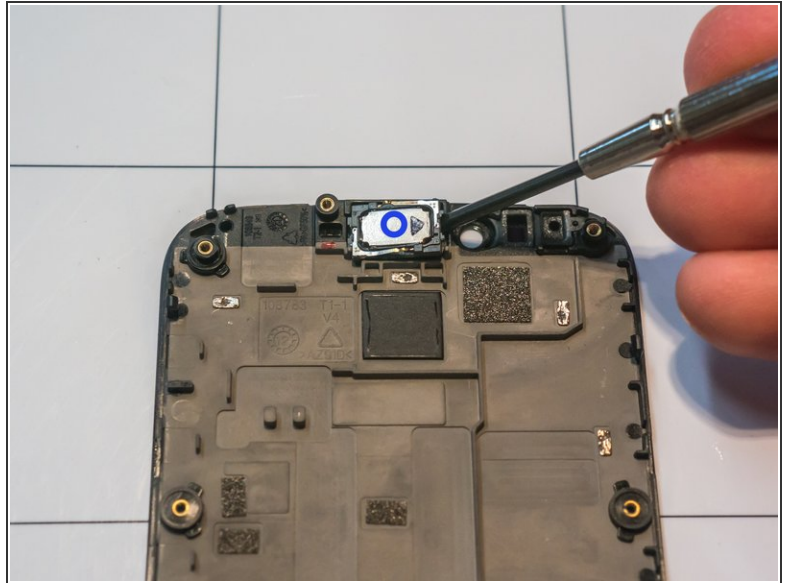
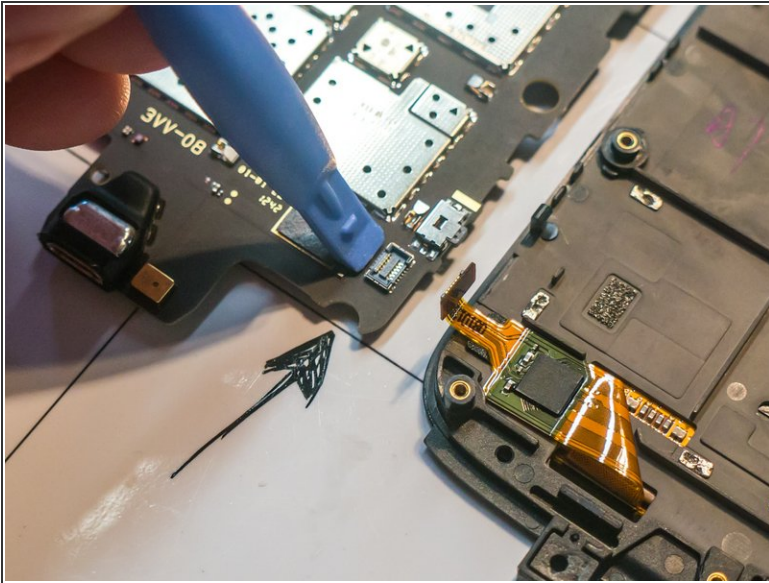


- Raise the logic board by the edge freed in the previous step, and slide it from underneath the remaining clips on the other side.

 There is a second ribbon cable directly across from the first, on the underside of the logic board, visible in the last two photos.

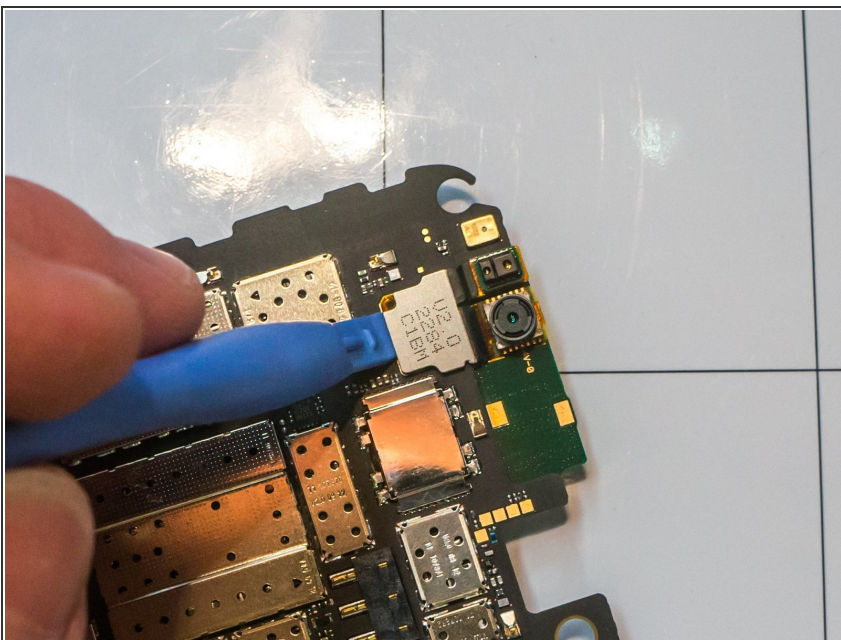
- Carefully flip the logic board and set it on the workspace next to the screen assembly. Take care to avoid damaging the ribbon cable.

Step 9



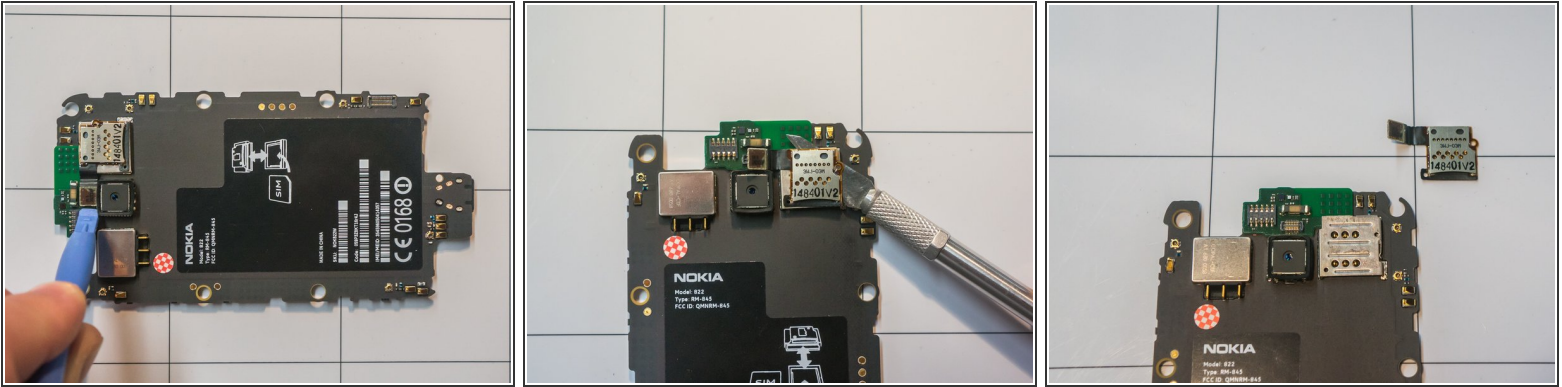
- Use a plastic opening tool to free the ribbon cable connector, again making sure to pry only on the cable's connector.
- The only replaceable part on the screen assembly is the earpiece speaker, although removing it will ruin the double-sided foam adhesive strip that holds it in place.

Step 10




- On the logic board, the front facing camera, along with the proximity and light sensors can be removed simply by loosening the connector with a plastic opening tool.

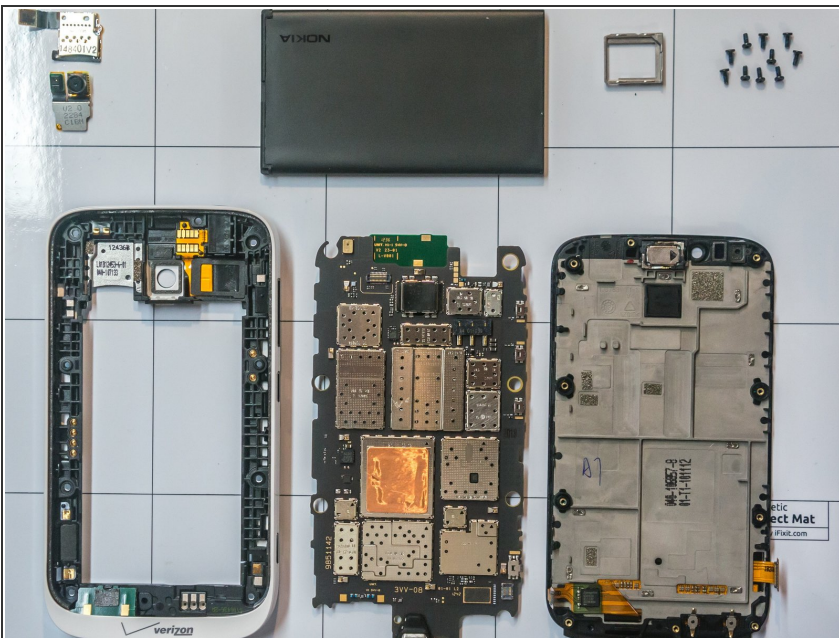
Step 11




- To remove the Micro-SD slot, begin by freeing the connector from the logic board using a plastic opening tool.
- The Micro-SD slot is adhered to the SIM slot using a medium adhesive. Use a hobby knife to free it, carefully sliding it between the two slots.

 Be sure to move slowly and with as little force as necessary to reduce the chance of injury or damaging a component.

Step 12



- Basic disassembly is complete.

 When reassembling, be very careful when connecting ribbon cables. The connectors are delicate. Make sure the connectors are lined up before applying any pressure, and do not use excessive force.

To reassemble your device, follow these instructions in reverse order.