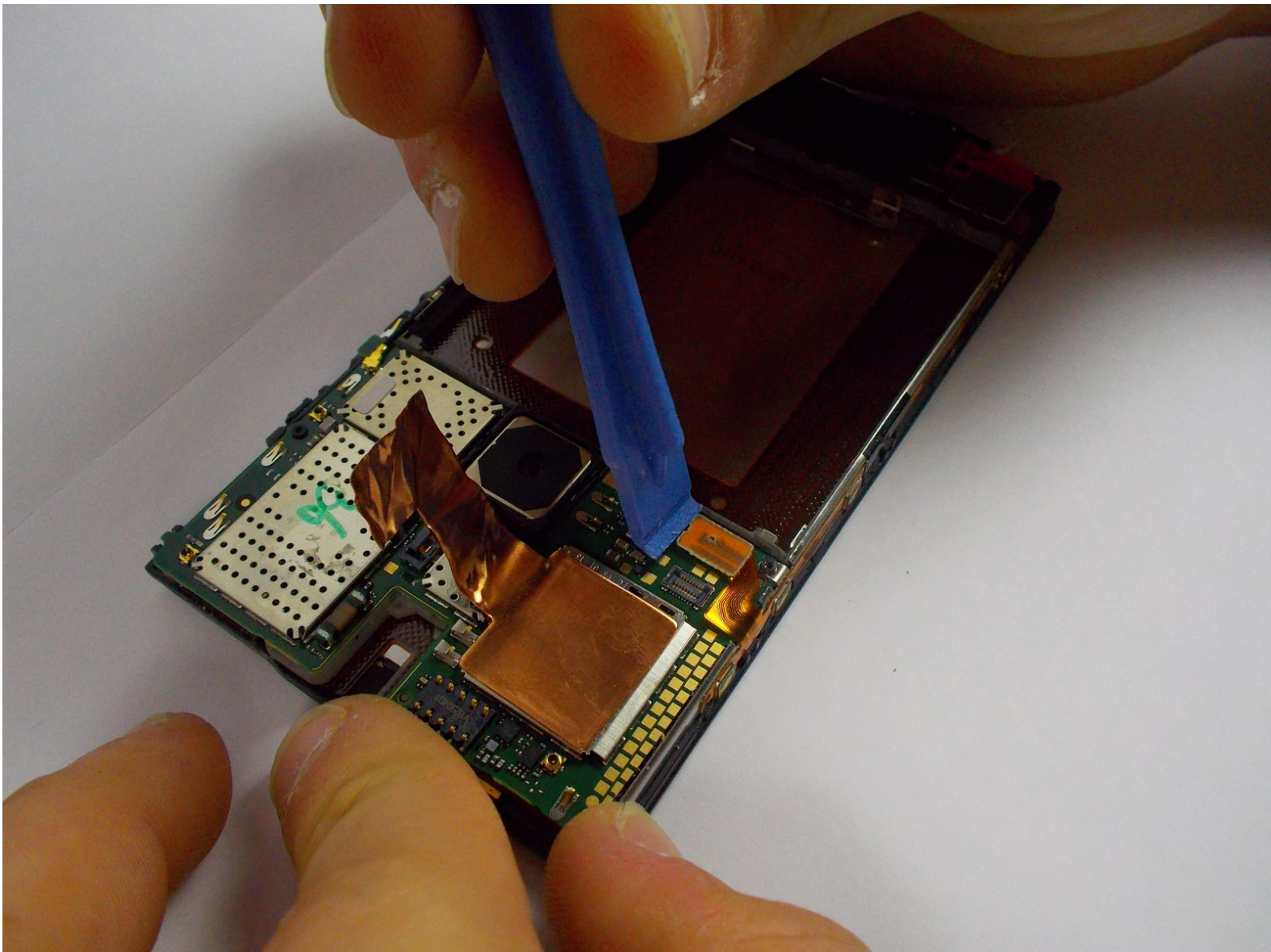




Nokia Lumia 920 Volume, camera, and power ribbon. Replacement

If there are issues with the volume, power, or camera buttons, it could have to do with a faulty ribbon. This guide shows how to replace that.

Written By: Jonathan



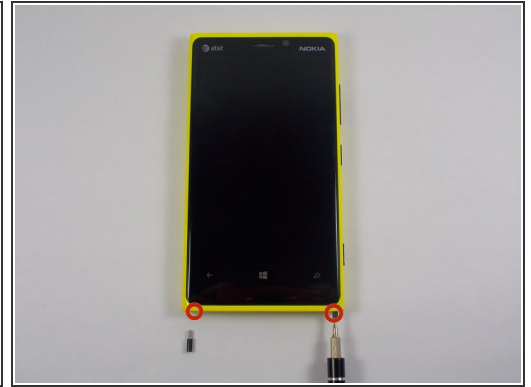
INTRODUCTION

If there are issues with the volume, power, or camera buttons, it could have to do with a faulty ribbon. This guide shows how to replace that.

TOOLS:

- [iFixit Opening Tools](#) (1)
 - [T5 Torx Screwdriver](#) (1)
 - [SIM Card Eject Tool](#) (1)
-

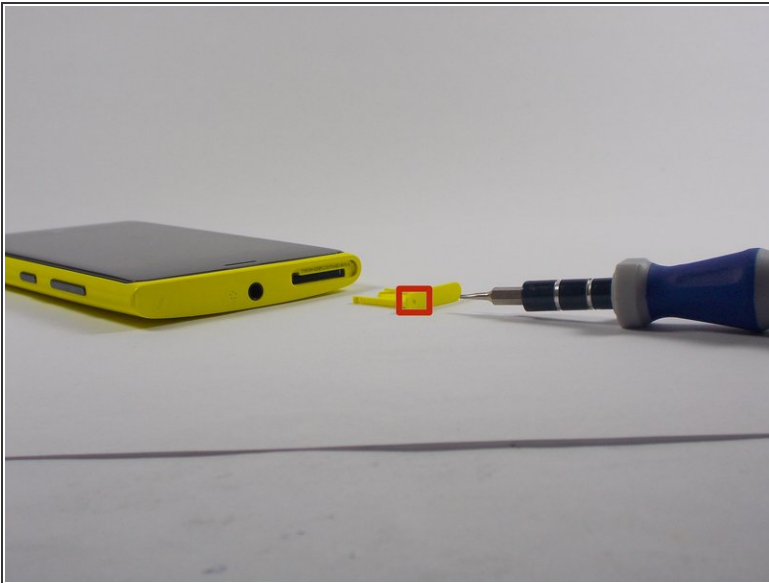
Step 1 — Remove the Bottom Screws



i Make sure the phone is off.

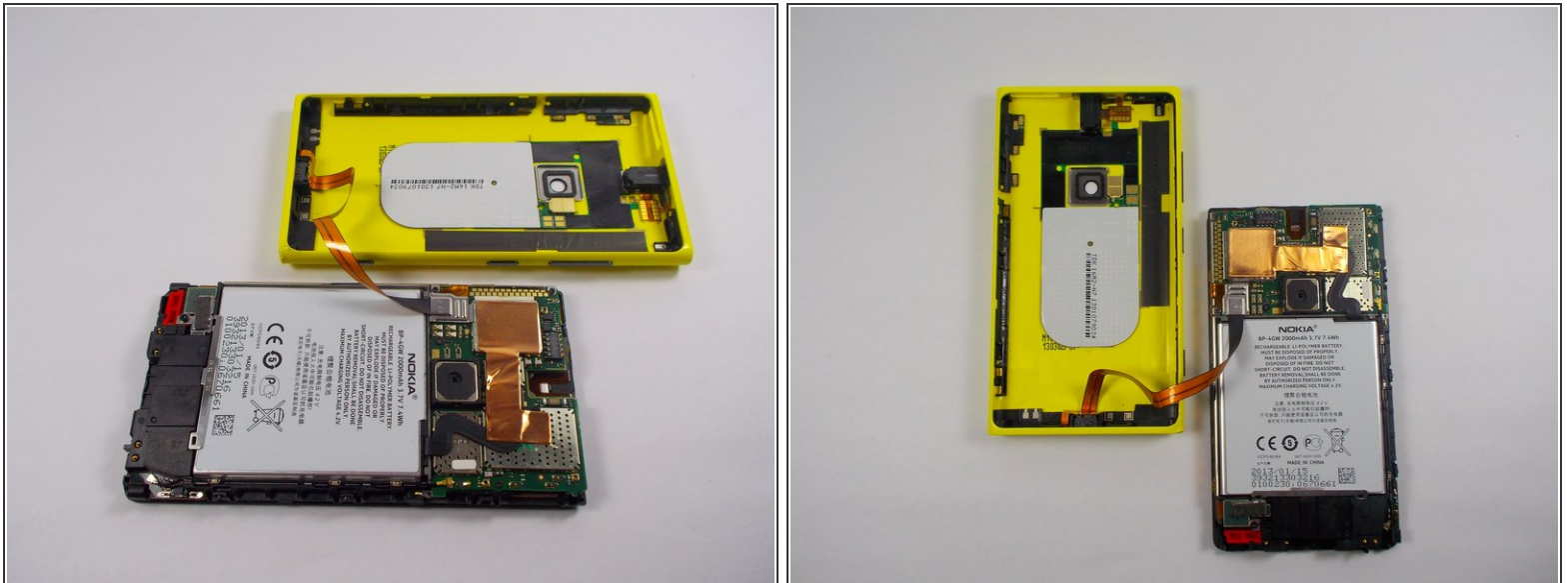
- Use the T5 screwdriver to remove the two 8.6mm long screws, located at the bottom of the phone. (Head size is 2.5mm)

Step 2



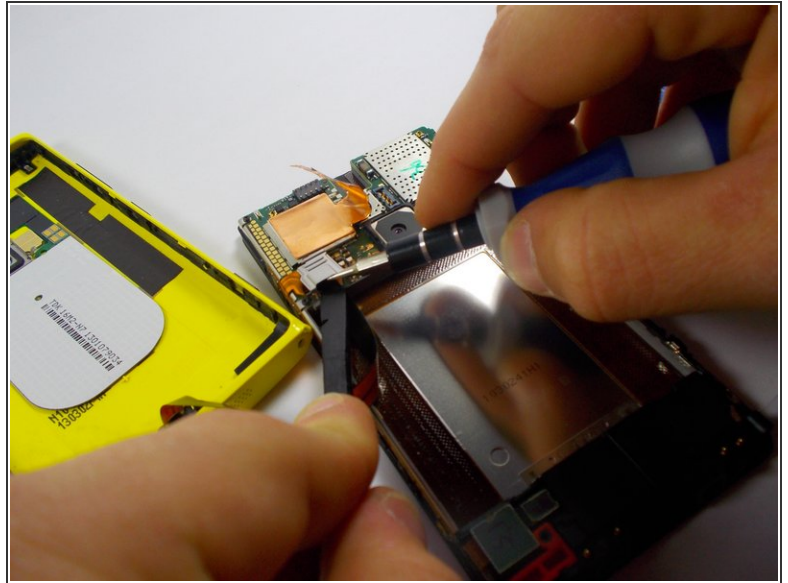
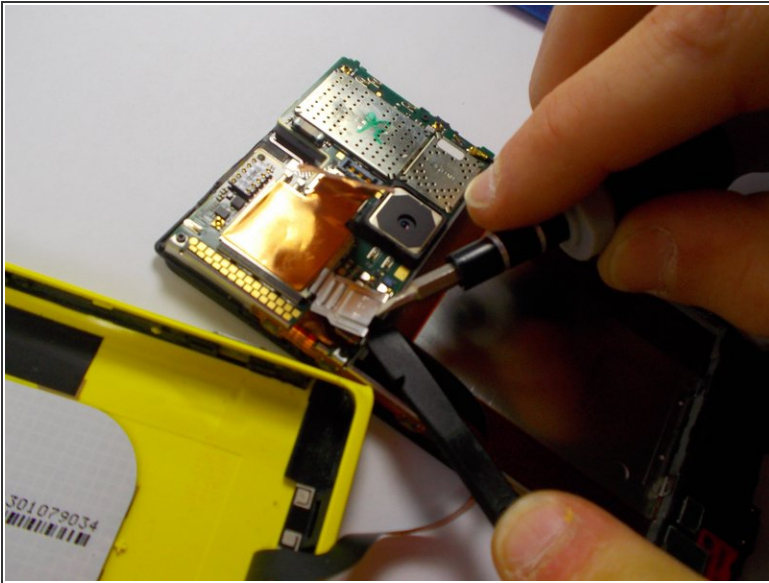
- Use the smallest Torx screwdriver or another small poking tool and push into the hole on the SIM card slot. The plastic SIM protective piece should pop out quite easily.
- Put that plastic piece aside.


Step 3



- Once both screws on the bottom are removed, and the plastic SIM protective piece is removed, gently push on the outside of the screen.
- The screen should become separated using little force. And should like the pictures shown once complete.

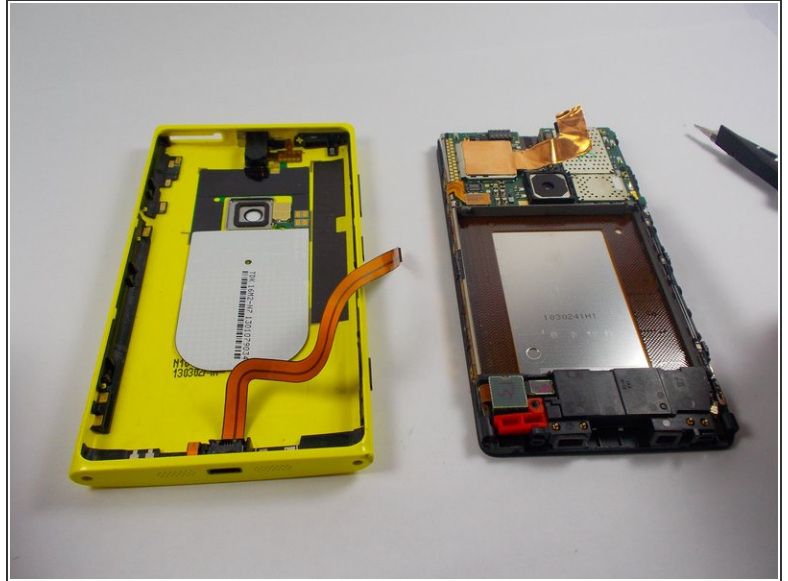
Step 4



 This step may be easier to remove the battery first, but it is not mandatory.

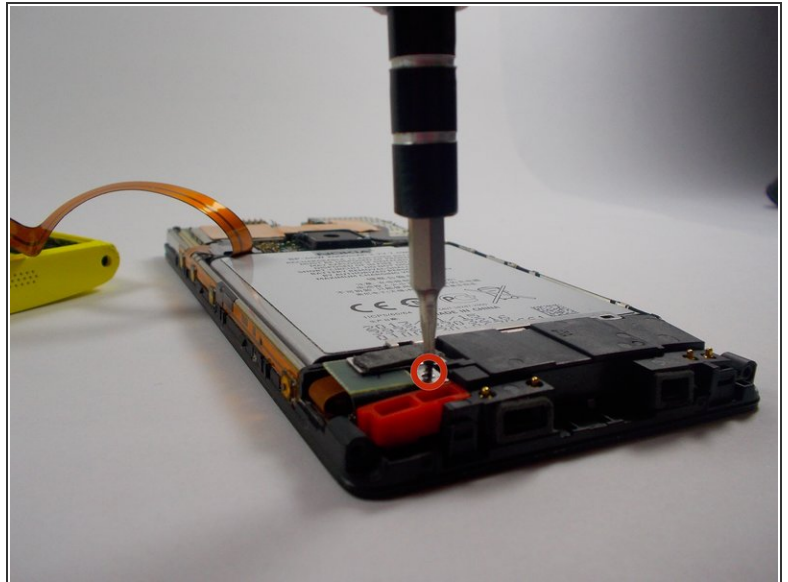
- Place the spudger tool or flat plastic tool on top of the ribbon cable to avoid damaging it when prying up on the metal clip.
- Use a plastic opening tool, or gently use a small metal flat-head screwdriver to pry up the metal clip. (It is recommended to use a plastic tool; However, if the opening tool does not work or fit into the small opening underneath the clip, use the flat-head.)

Step 5



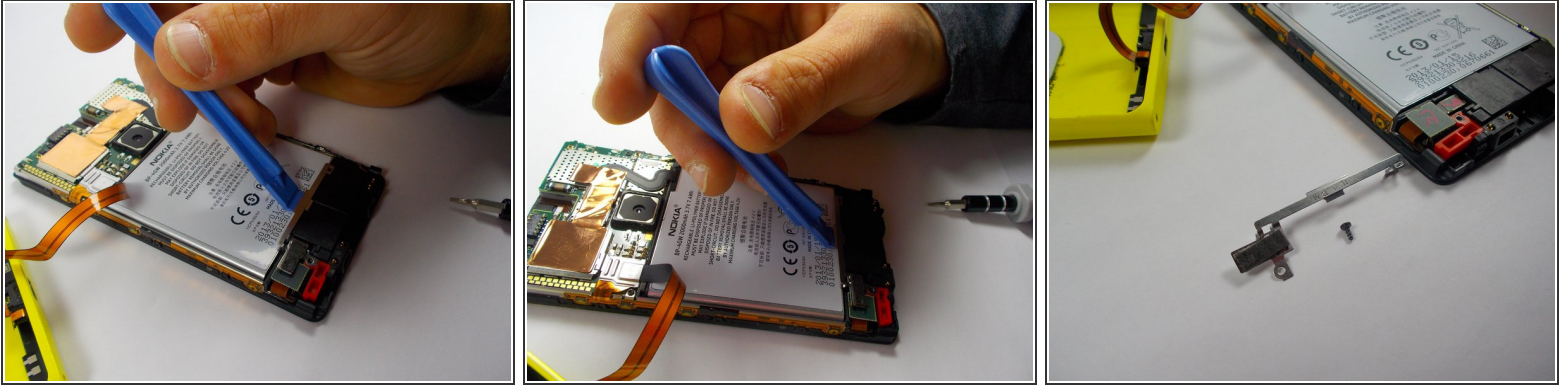
- Once the metal clip is removed, gently pry up on the ribbon cable connection, located underneath the metal clip you have just removed.

Step 6 — Battery



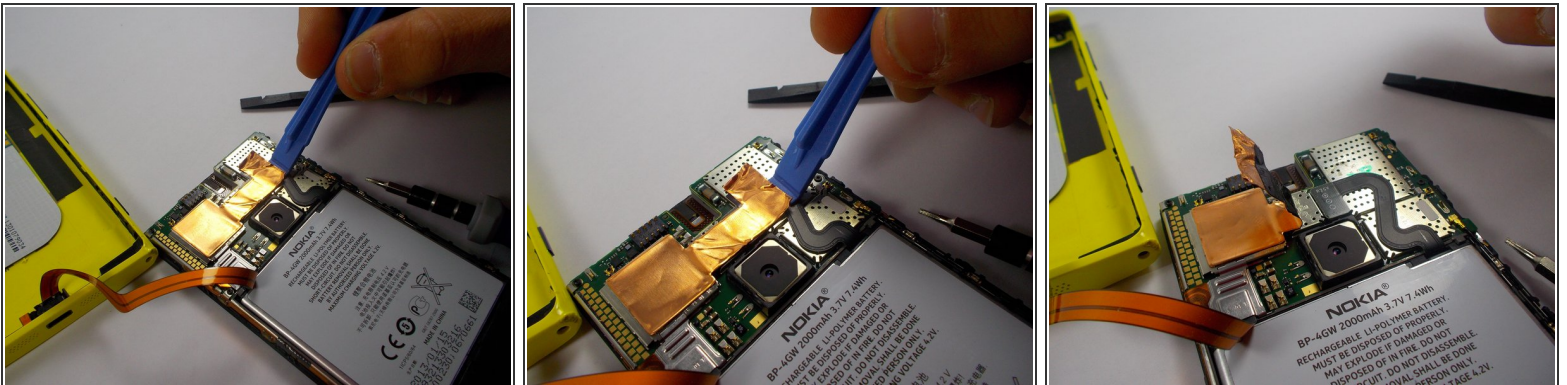
- Prerequisite step: Back panel removal
- Use the T4 torx screwdriver to remove the 3mm screw (diameter of the head is 1.5mm) fastened to the metal clip, holding the battery in place.

Step 7



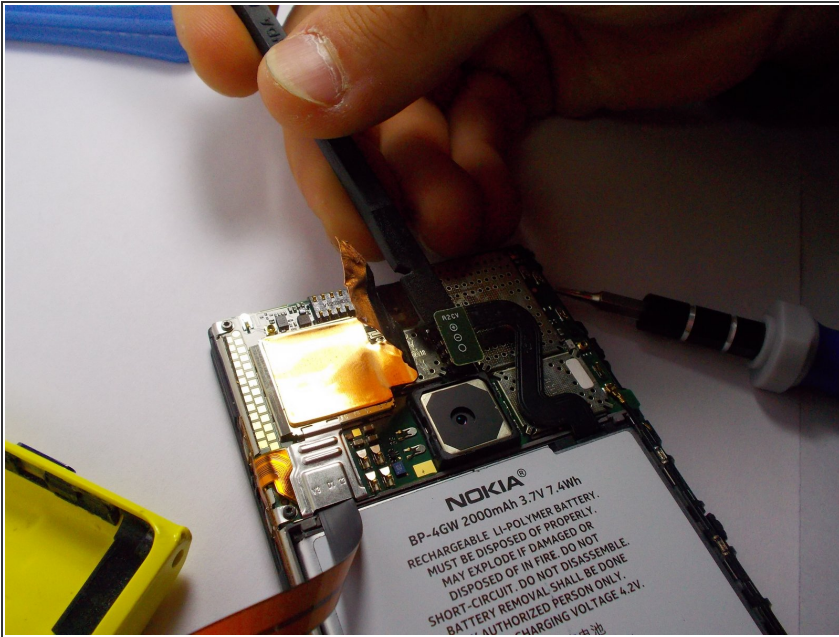
- Using the plastic opening tool, pry up on the metal clip holding the battery in place.
- Completely remove the clip.

Step 8



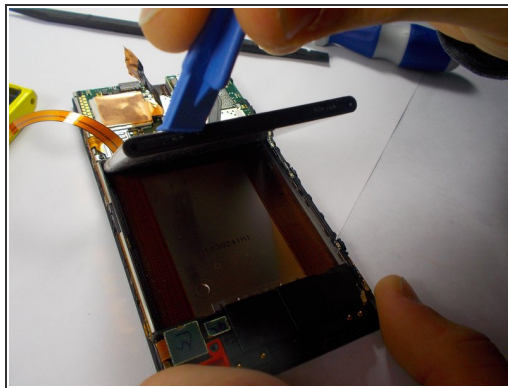
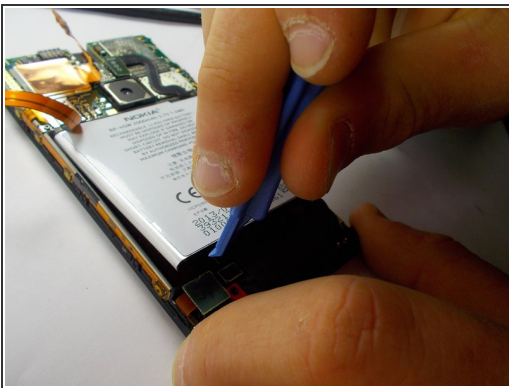
- Use a plastic opening tool. Start on the right, and gently lift up on the copper strip.
- You do not have to completely remove the copper strip, only enough so that the connection to the battery is visible.

Step 9



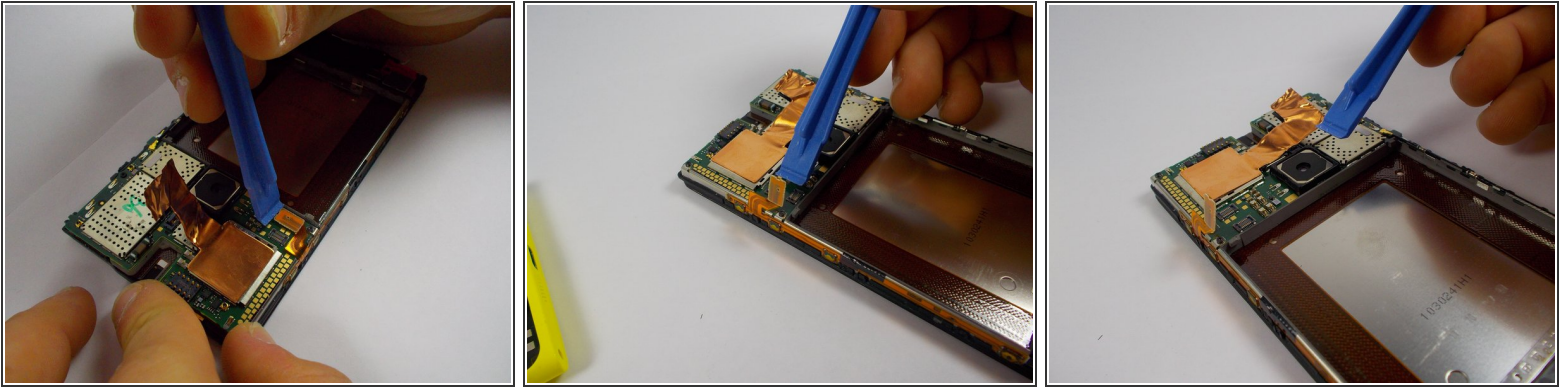
- Use a plastic opening tool or spudger, and gently lift up on the connective piece.

Step 10



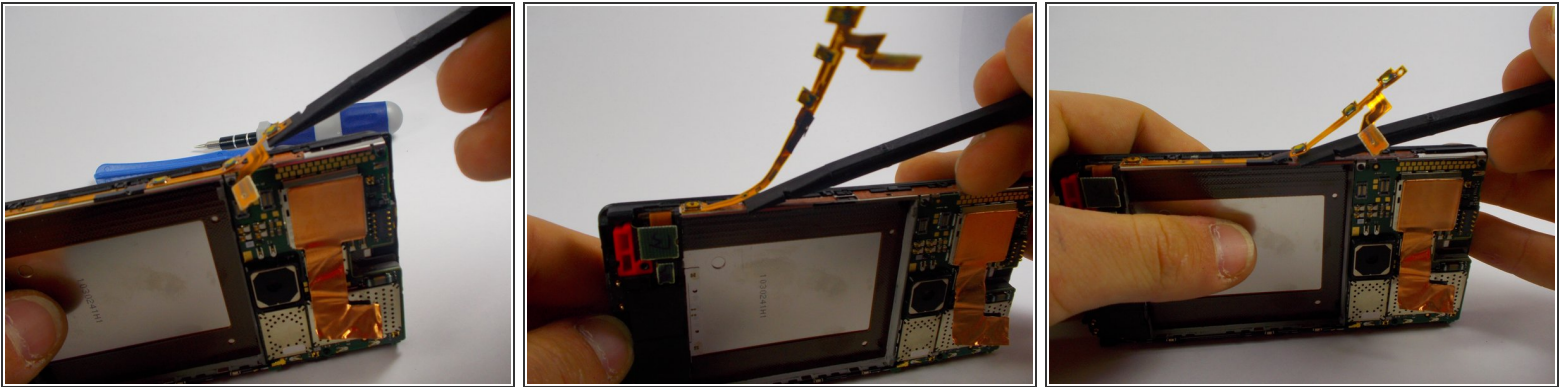
- Use a plastic opening tool at the bottom of the battery and gently lift.
- The battery should lift out easily.

Step 11 — Volume, camera, and power ribbon.



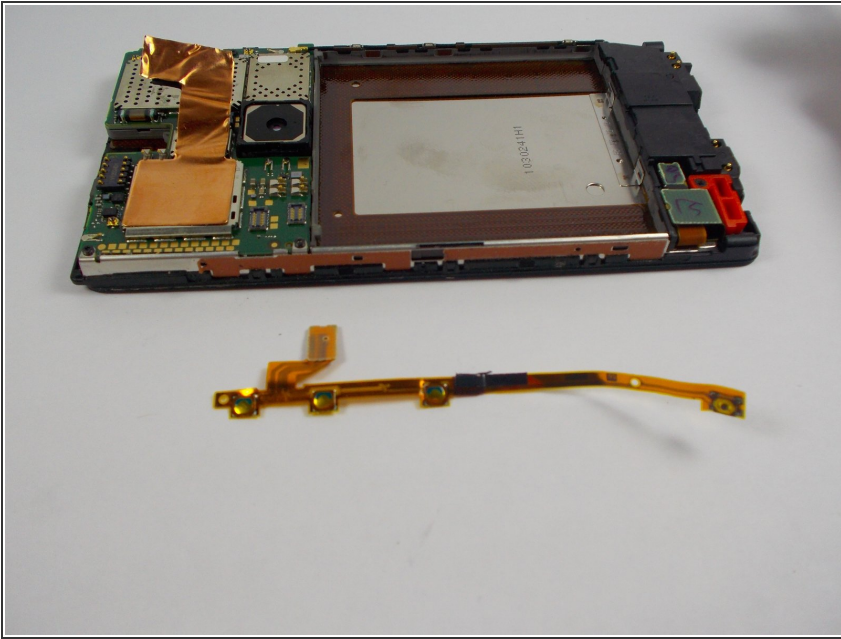
- Prerequisite guides: Back panel removal, Battery Removal
- Use the plastic opening tool to gently lift up on the connective piece attached to the volume, camera, and power button strip.

Step 12



- Flip the front panel on its side with the strip you are working on facing upward.
- Use a spudger tool and starting at the top, gently pry the button sensors up.
- Slide the tool underneath the strip and pry up the next button sensor.
- Do this down the line until the strip becomes completely detached.

Step 13



- The power strip should look like this fully detached.

To reassemble your device, follow these instructions in reverse order.