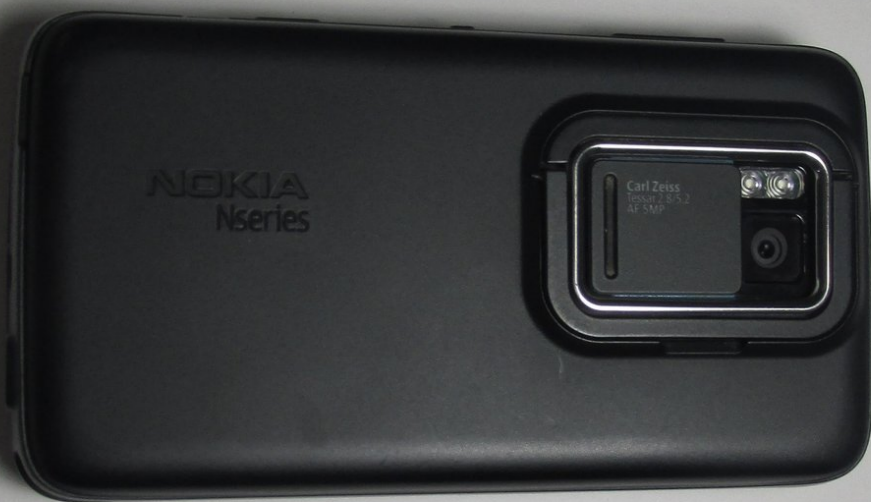




Nokia N900 USB Replacement

In this guide, I will show you how to locate you USB port so that you can replace it if it is broken or not working.

Written By: Troy Posey





TOOLS:

- [Pro Tech Toolkit](#) (1)
-

Step 1 — USB



- Turn the phone over so the screen is face down.

Step 2



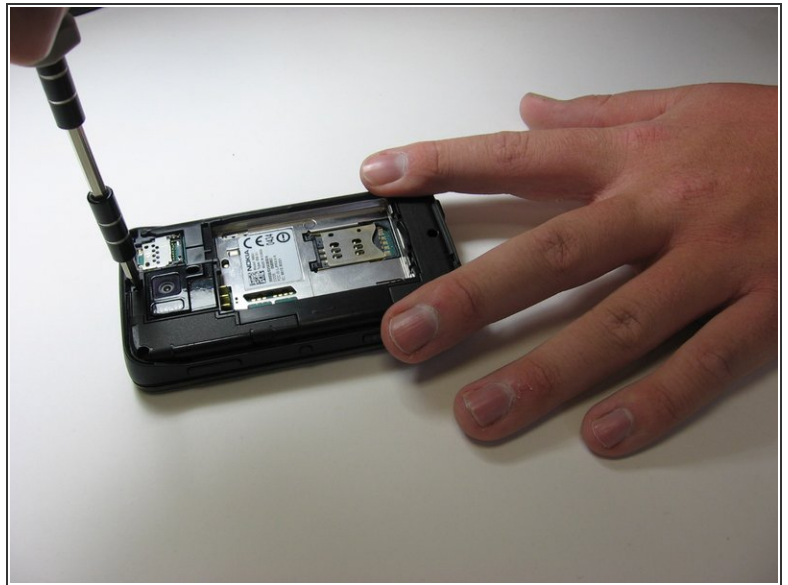
- Remove the back cover by locating the slit on the bottom of the phone and lifting up.

Step 3



- Remove the battery by lifting it out of the device.

Step 4



- Remove the two "L-shaped" antennas by unscrewing the following screws:
 - Four screw *M1 .4x5.0*
 - Two screw *RF1 .4x4*
- In addition to unscrewing the screws, remove the B-Cover (which will fall right out without the screws).

Step 5



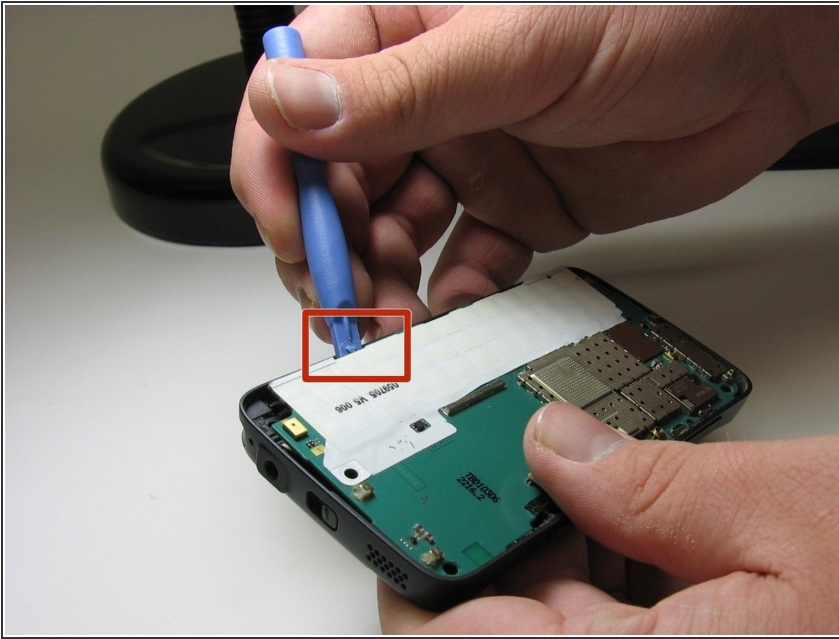
- You will now have two halves of the phone.
- Grab the half of the phone that has the keyboard on it

Step 6



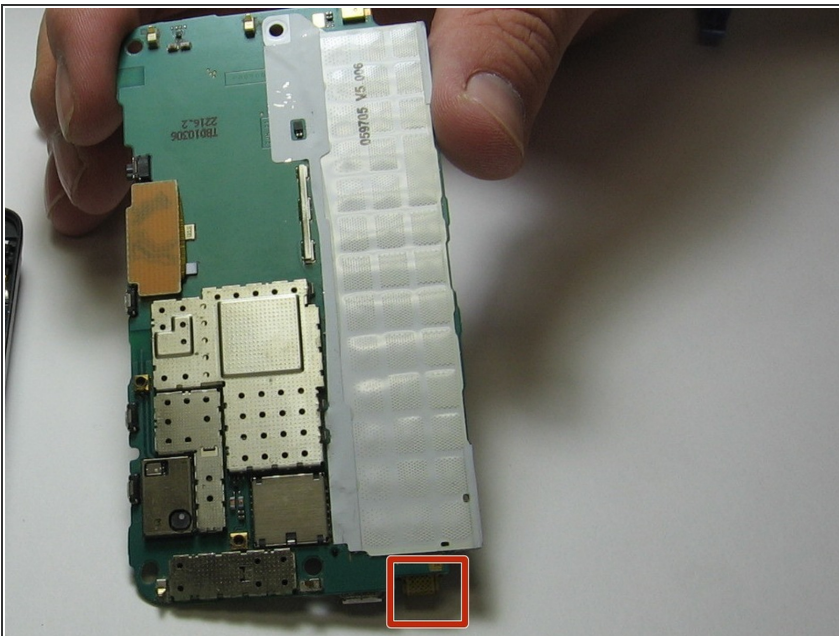
- Remove the keyboard by unsnapping the frame and then lifting the pad out from the device.
- Place the key pad and cover to the side for the remaining steps.

Step 7



- Use a blue plastic opening tool lift the motherboard out of the back cover

Step 8



- Look at the bottom of the motherboard to find the:
 - USB Port
- Once you've located the USB Port you can search online or call the manufacturer to replace it.

To reassemble your device, follow these instructions in reverse order.