



Nook BNRV300 Back Cover Replacement

This is a step-by-step guide on how to remove and replace the back cover from the Nook BNRV300.

Written By: Emily Tracy



INTRODUCTION

To replace any of your Nook's other components, you must first remove the back cover. This guide demonstrates the steps you will need in order to remove the Nook BNRV300 back cover. This device is also called the "Nook Simple Touch."

Before working on your device, remove the microSD card (if there is one). This will protect the memory of your card. The microSD card is located in a slot on the upper right side of the device.

This guide will enable access to the [battery](#), [motherboard](#), and [display](#).




TOOLS:

- [iFixit Opening Tools](#) (1)
 - [Spudger](#) (1)
 - [T5 Torx Screwdriver](#) (1)
 - [Tweezers](#) (1)
-

Step 1 — Power Button



 Power off your Nook before working on your device. Hold the power button for about 5 seconds and select the “Power Off” option.

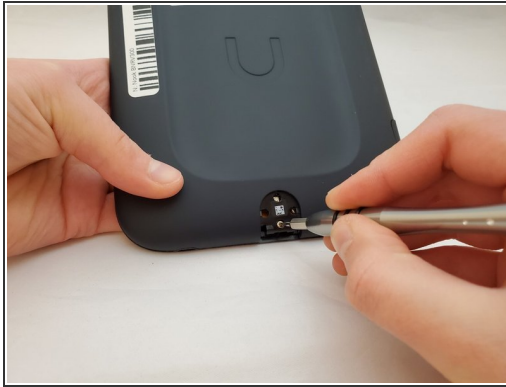
- Turn the Nook over to find the power button along the back upper edge.
- Wedge the spudger between the top of the power button and the upper edge of the device.
- Push the tool down to pry the button up and off.

Step 2



- Using your fingers, take off the power button.

Step 3 — Back Cover



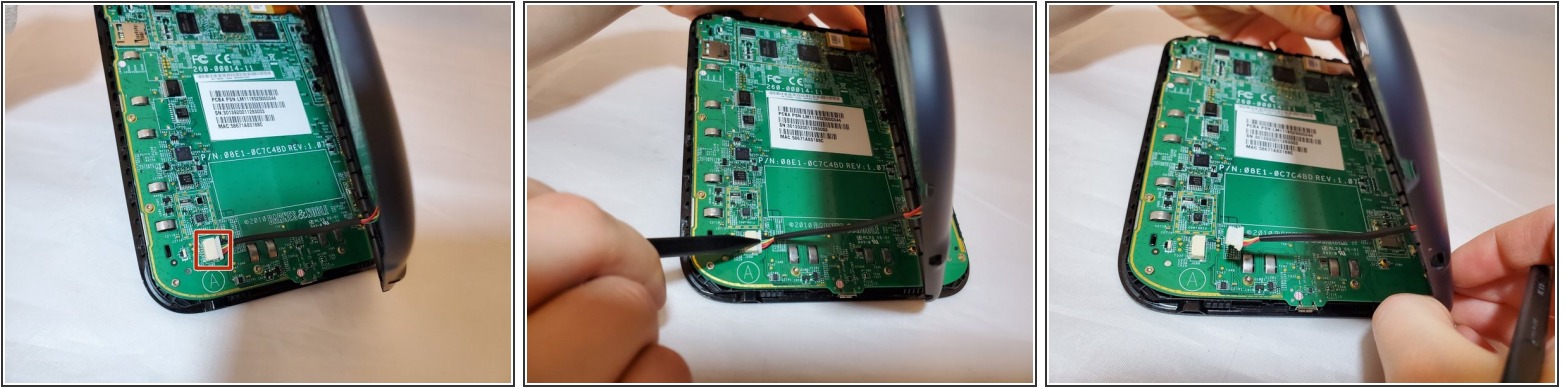
- Peel off the white sticker that is covering the screw head.
- Remove the one 2mm-long screw using a size T5 Torx screwdriver.

Step 4



- Wedge an opening tool between the back cover and the front plastic border at the top of the device (near the power button).
- i This will require some force.
- Slide the opening tool along the edges of the device, prying up until you are able to use your fingers to remove the back cover.
- i The back cover snaps as it pops off. This is normal.

Step 5



- Use a spudger or your fingers to gently pry the connector out of the white socket.
- The back cover is now fully detached.

Step 6



- Use tweezers to remove the brass-colored threaded fastener from the Nook plastic casing.

To reassemble your device, follow these instructions in reverse order.