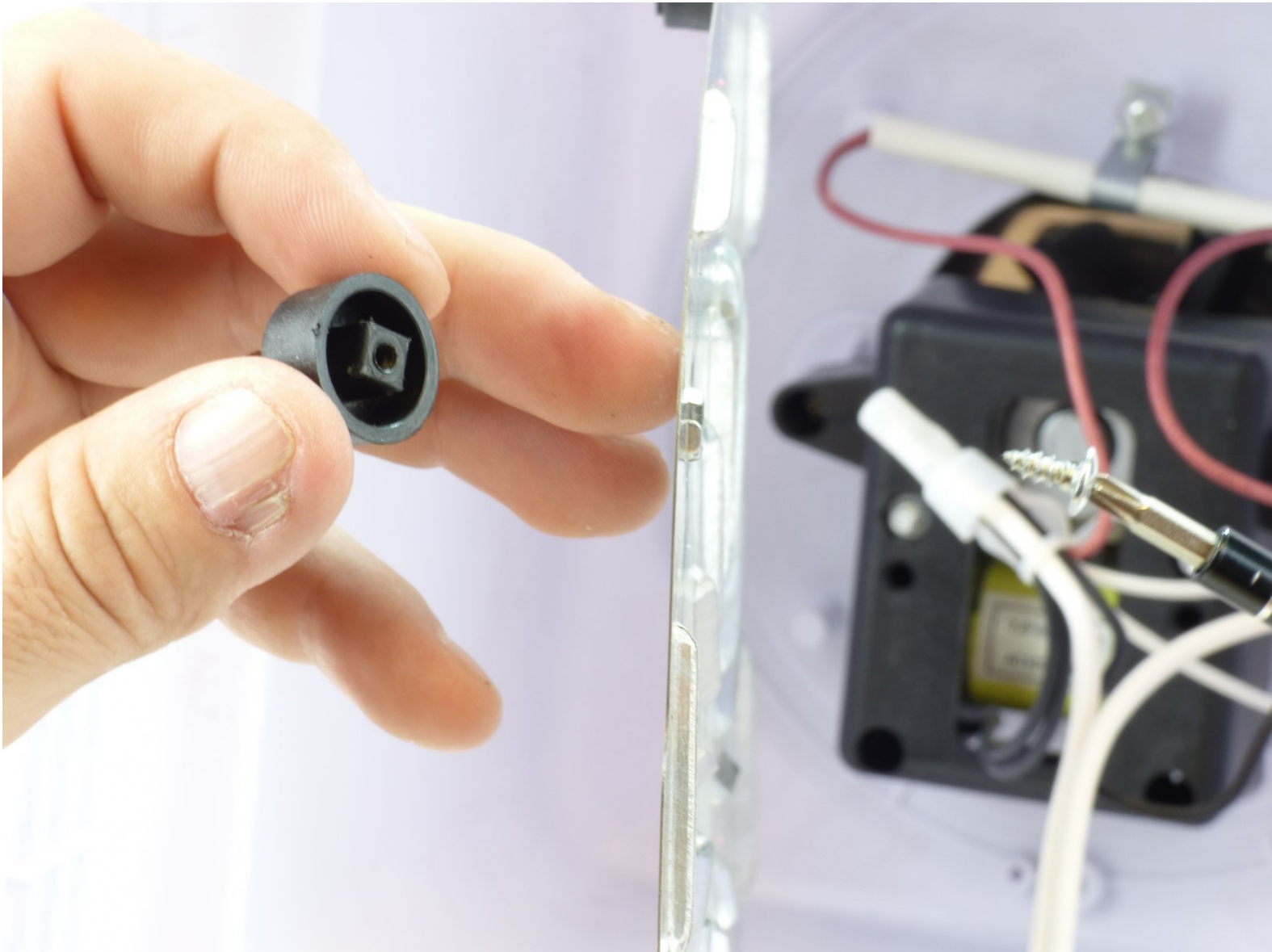




# Nostalgia Electrics PCM805 Stand Replacement

This guide shows removing the stands at the bottom of the device.

Written By: Carlton



## INTRODUCTION

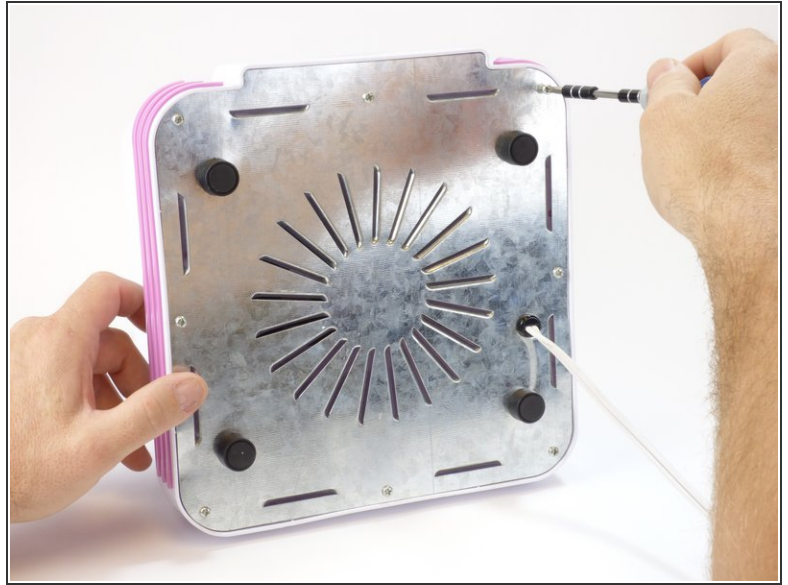
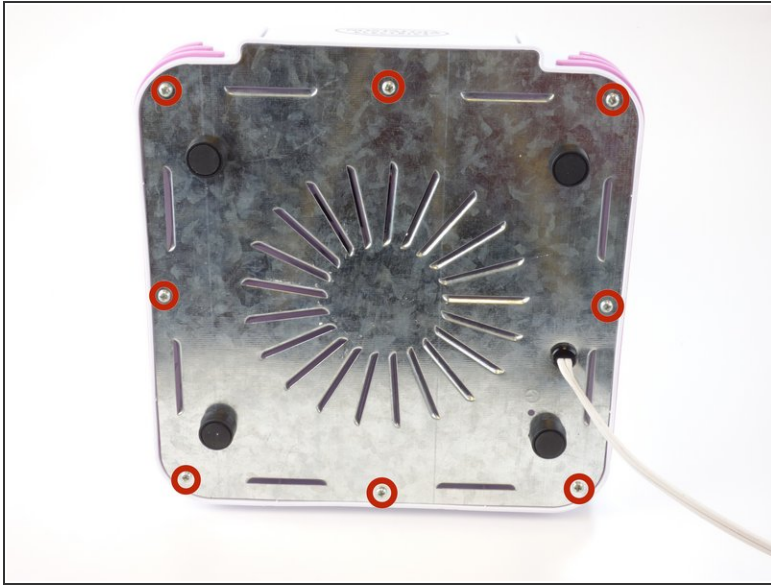
Use this guide to replace the stands on the bottom of the device if they are missing or damaged.




### PARTS:

- [Phillips #2 Screwdriver](#) (1)
-

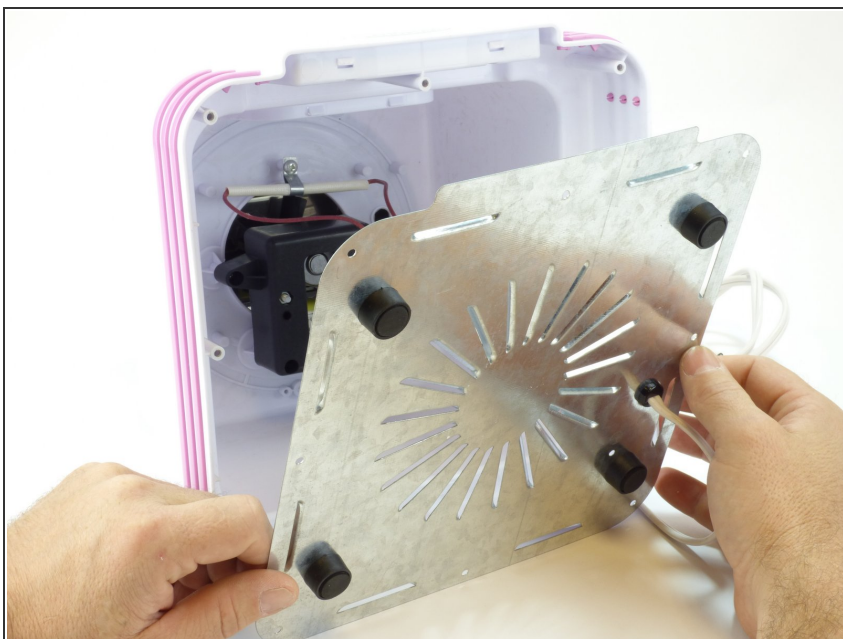
## Step 1 — Unscrewing the base



 Unplug the device before following this guide.

- First, place the device on its side, making sure the switch is not facing down.
- Remove the eight 12mm Phillips #02 screws from the base.

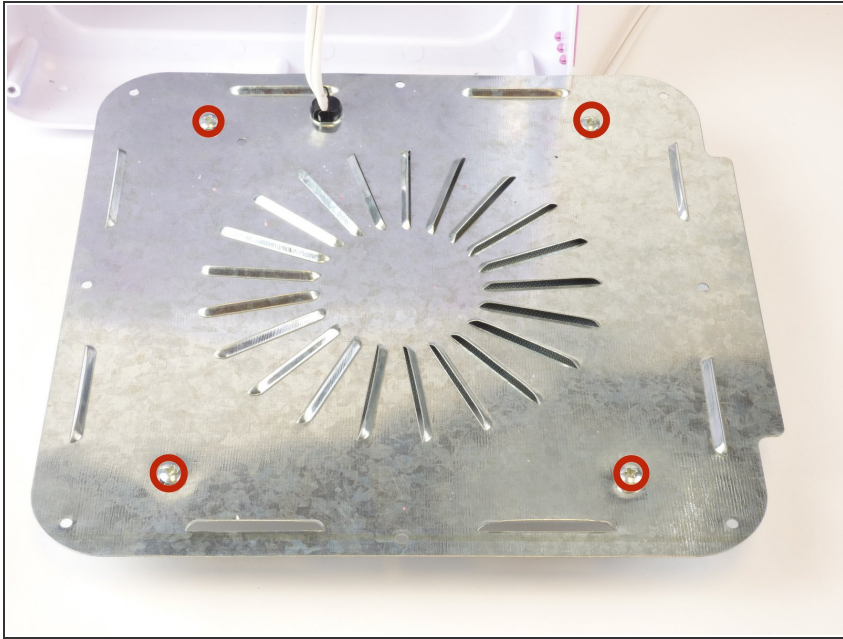
## Step 2



- Gently separate the panel from the device.
- ⓘ Be sure not to tug at the wires that are still connected.

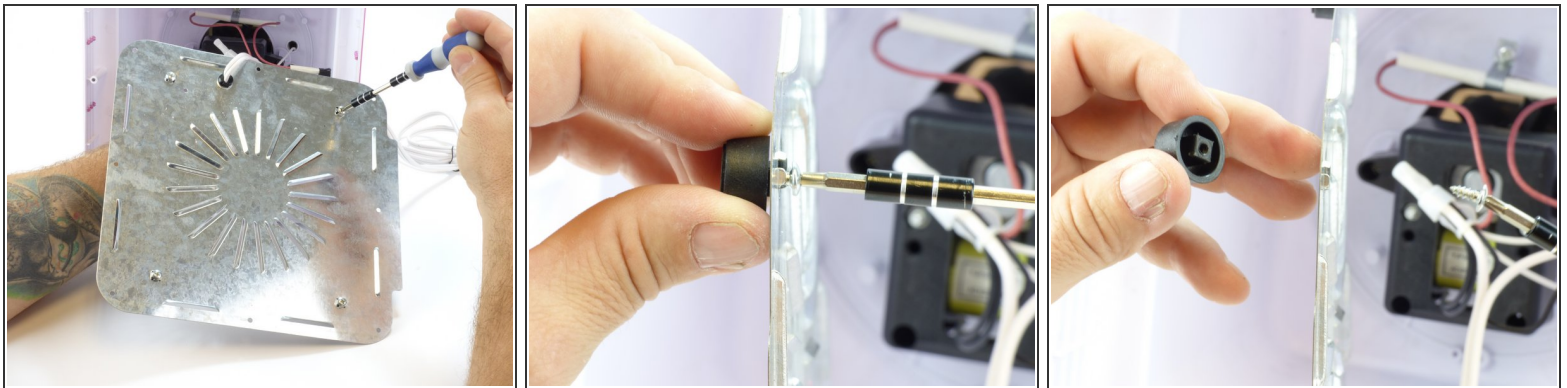


## Step 3 — Stand



- Locate the four 10mm Phillips #02 screws on the inside of the panel.

## Step 4



- Remove the screw of the foot you plan to replace.
- ⓘ Place your finger on the back of the the foot you are unscrewing for support.

To reassemble your device, follow these instructions in reverse order.