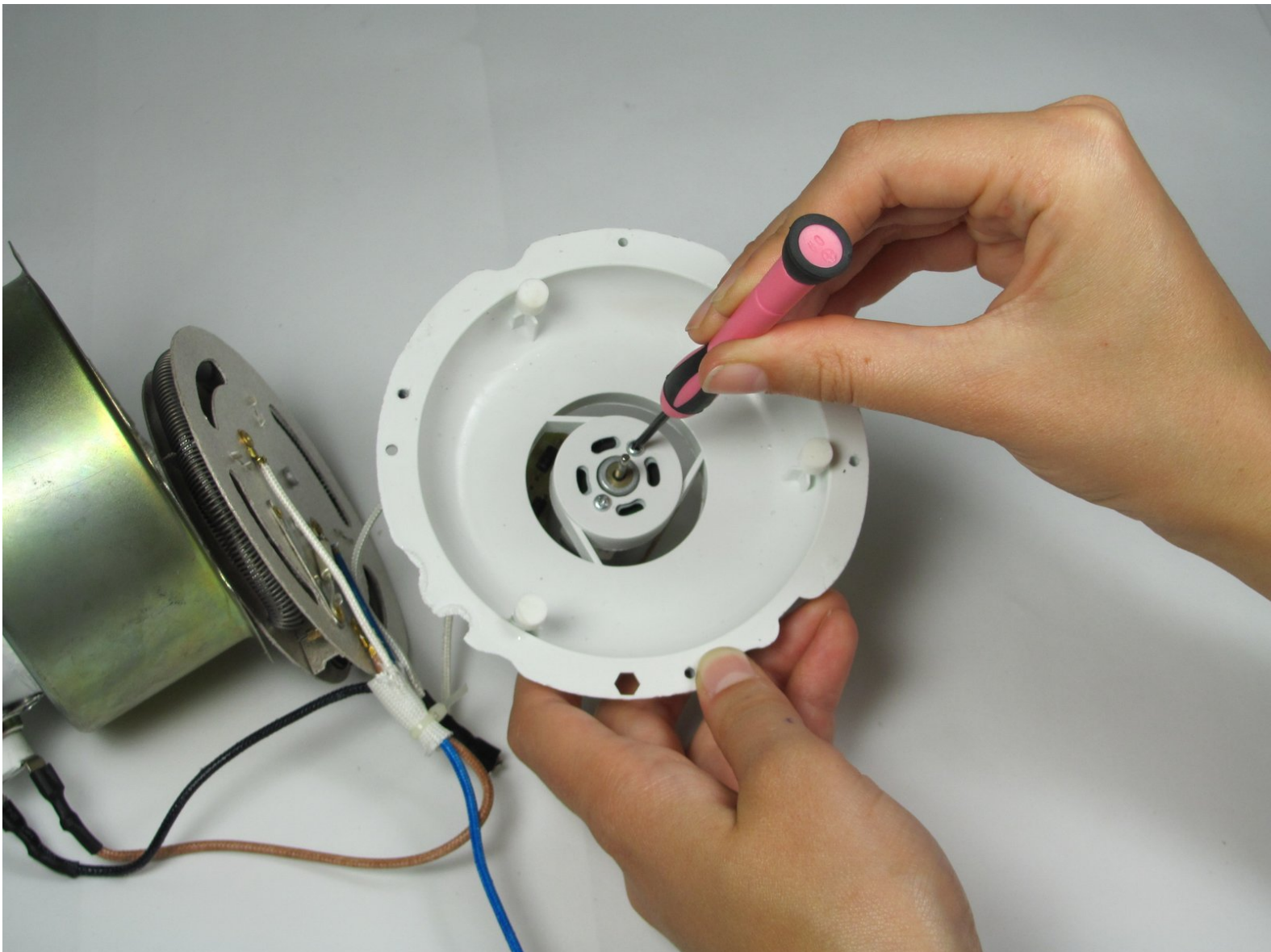




Nostalgia Electrics RHP-310 Motor Replacement

This guide will show how to replace the motor, located underneath the fan within the heating component.

Written By: Dana Clarke



INTRODUCTION

This guide will teach the user how to install a new motor for the device.



TOOLS:

- [Phillips #0 Screwdriver](#) (1)
- [Soldering Workstation](#) (1)
- [Phillips #2 Screwdriver](#) (1)
- [iFixit Opening Tools](#) (1)



PARTS:

- [New motor](#) (1)

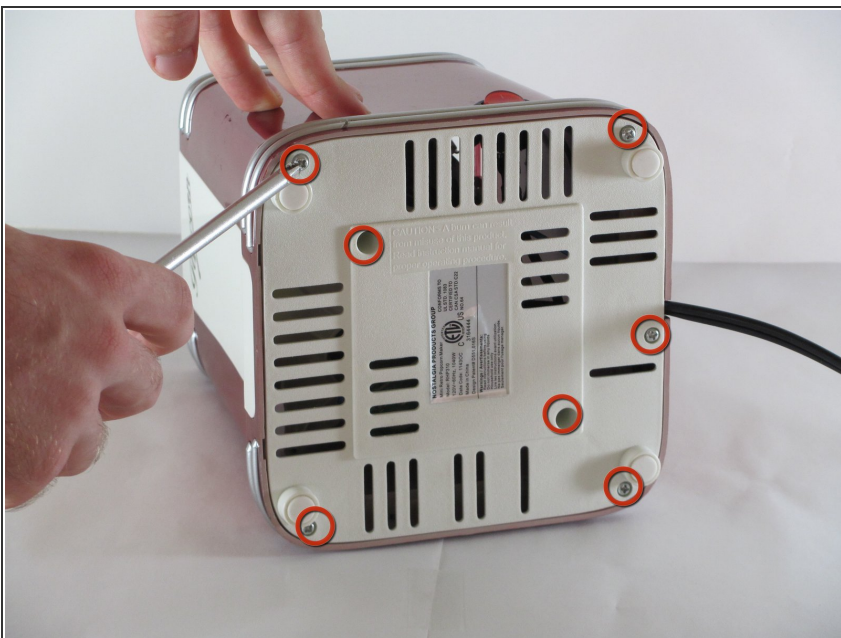
Step 1 — Power Switch



⚠ Unplug popper.

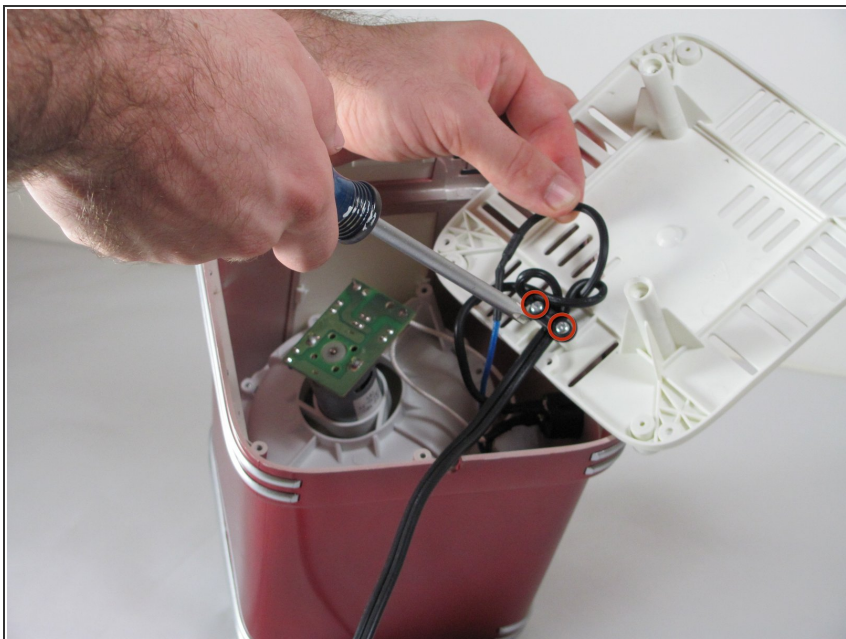
- Remove plastic lid by picking the lid up.

Step 2



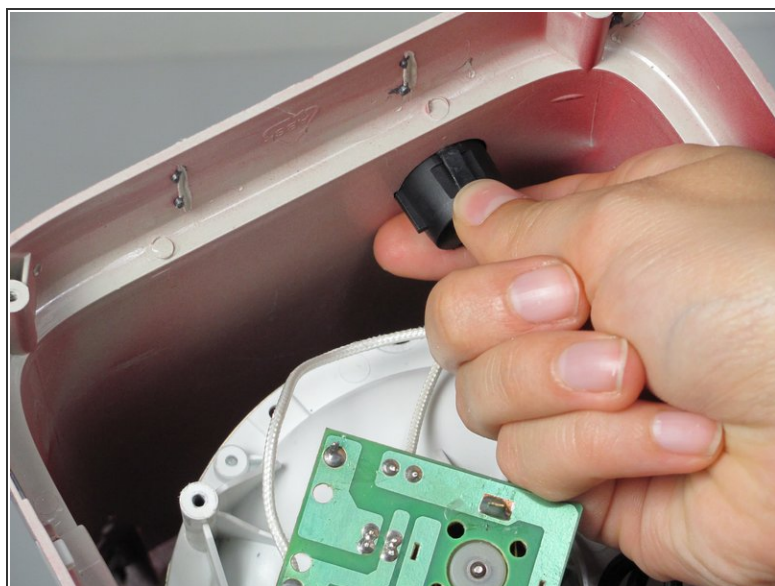
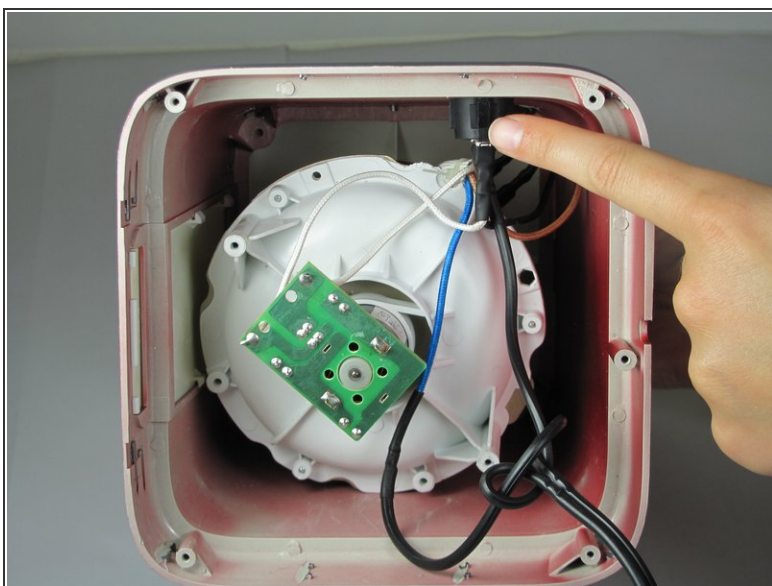
- Flip the popper on its side.
- Remove the screws on the bottom with the Phillips #2 phillips head screwdriver.
- ⓘ There are seven screws on the base. Five screws on the perimeter (12mm Philips #2 screws) and two in the middle (15 mm Philips #2 screws).

Step 3



- Remove the base.
- ⓘ Save the screws you took out of the bottom in a safe place. They will be needed to reattach the housing to the base.
- Unscrew the two screws (10 mm Philips #2 screws) from the base.
- Remove the base and set it aside for now.

Step 4



- Locate the power switch connected to the side of the housing.
- Carefully pinch the sides of the power switch.
- Push the power button up and out of the housing.

Step 5



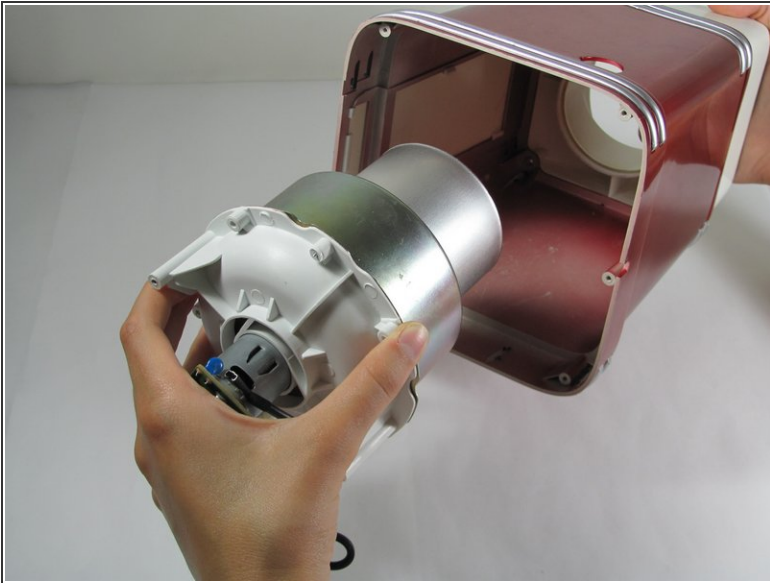
- Now that the power switch is removed from the housing, you have to remove the wires connected to the power switch.
- Use the plastic opening tool to gently pry the wires loose from the power switch.
- ⓘ The wires should pop easily out from the power switch.

Step 6



- Remove the power switch from the device.
- You can now replace the power switch if necessary.

Step 7 — Replacing Housing



- Now that the power switch is disconnected from the popper, you will need to remove the white top.
- Gently remove the heating component from the popper.
- Unscrew the four screws (11mm Philips #2 screws) that connect the white top to the housing.

Step 8



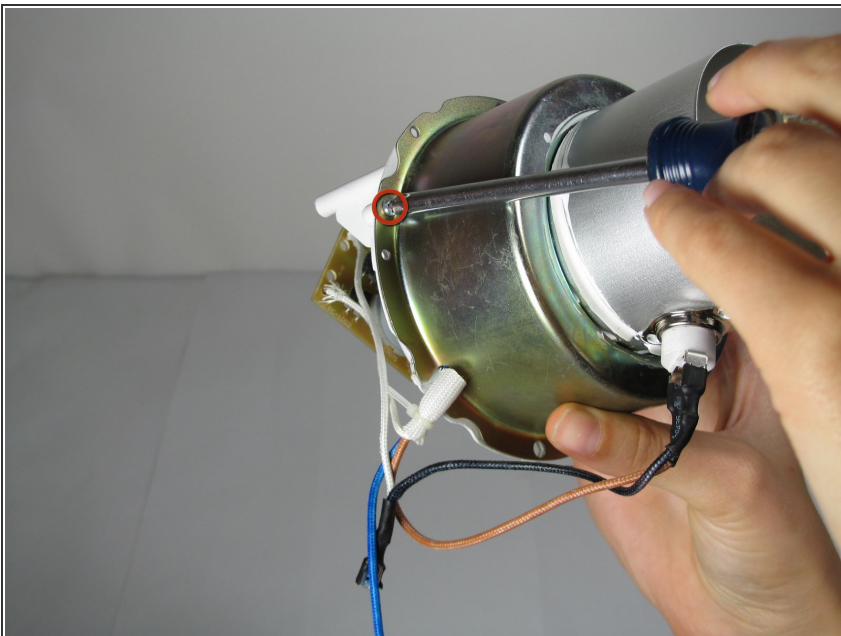
- Remove the white top from the housing.
- ⓘ Save the screws from previous step. You will need them to connect the new housing to the white top.

Step 9 — Replacing Fan



- Now that the white top is disconnected from the housing, remove the heating component from inside the device.

Step 10



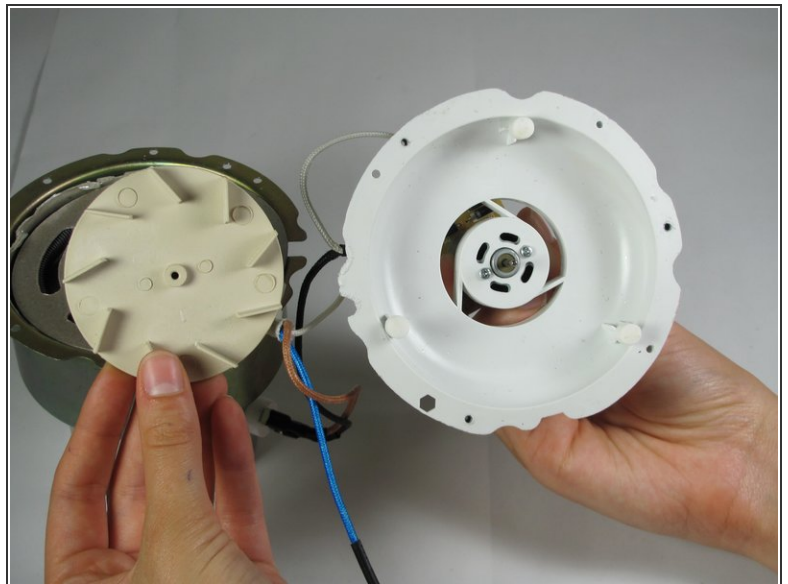
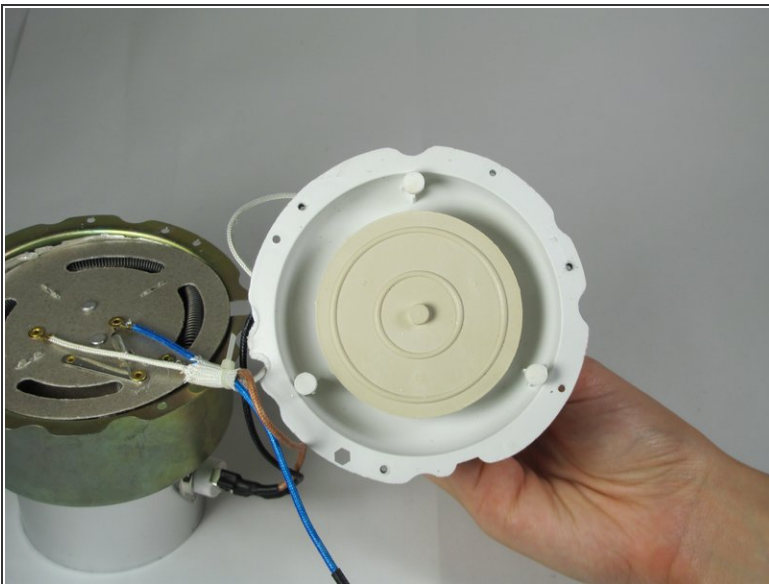
- Unscrew the three screws (10 mm Philips #2 screws) that hold the heating component together.

Step 11



- ① Make sure to keep the screws. You will need them to put the heating component back together.
- Pull the heating component apart.

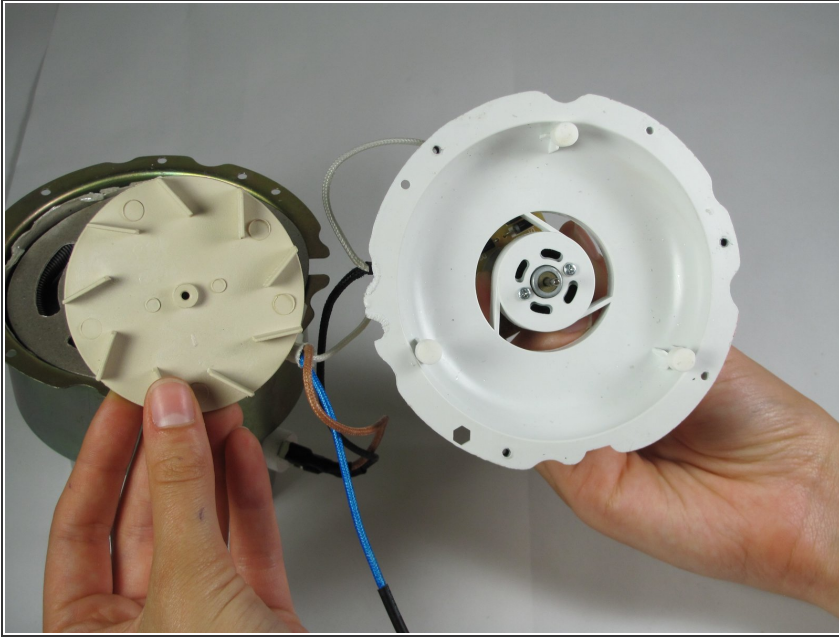
Step 12



- Locate the fan.
- Pull the fan off the motor firmly but gently.

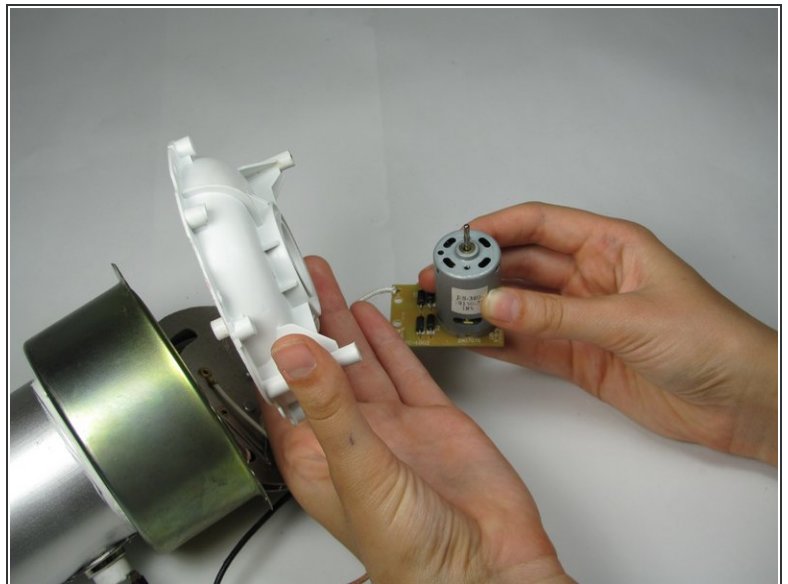
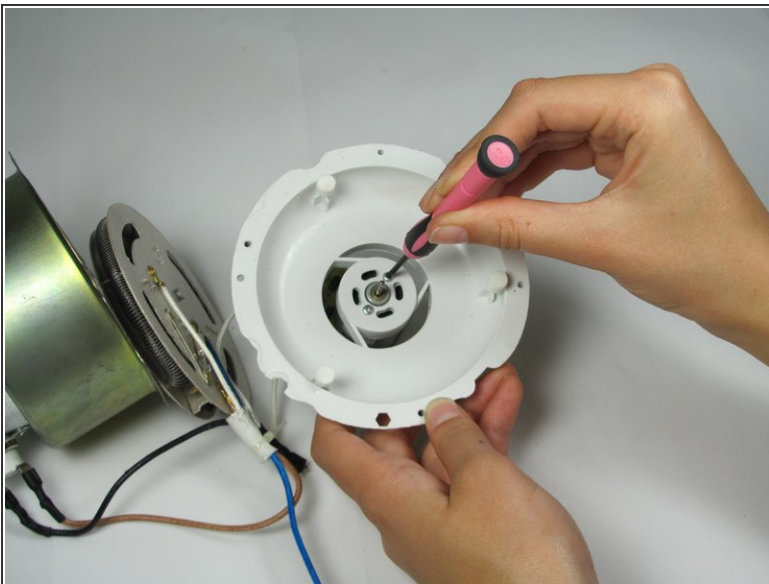
⚠ When you pull the fan off the motor, be careful. Do not pull too hard or you will break the motor.

Step 13



- You can now replace the fan.
- ☑ If there is debris stuck in the fan, you can easily clean it out from the fan in this step.

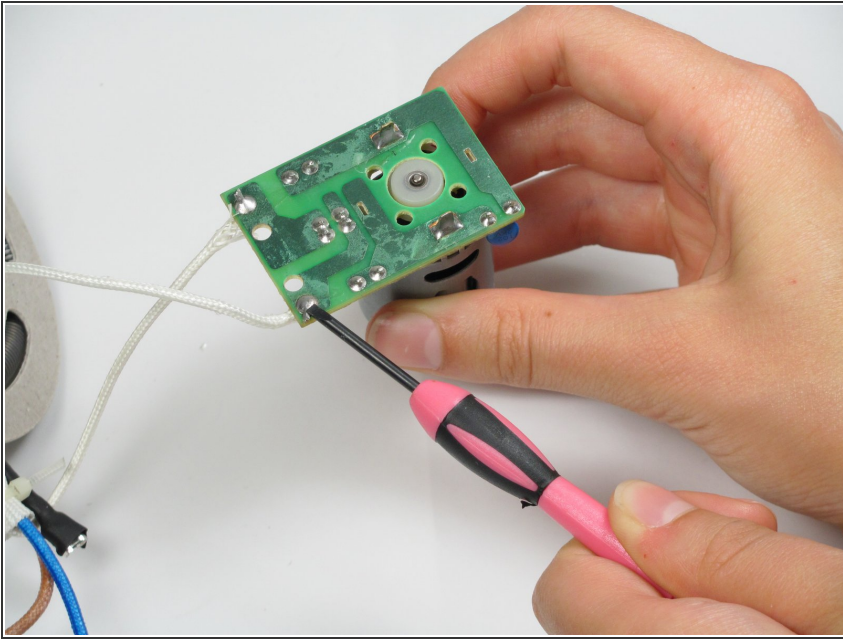
Step 14 — Motor



- Unscrew the two screws (2.5mm #0 Philips screws) that connect the motor to the fan base using the #0 Philips screwdriver.
- ☑ Remember to keep the screws. You will need them to reassemble the popper.
- Remove the motor from the fan base.

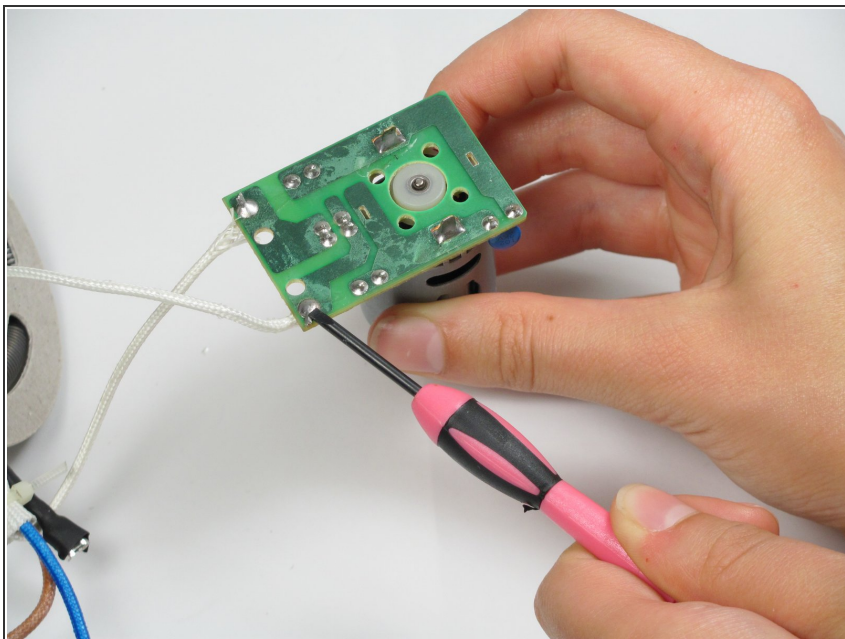
This document was generated on 2019-09-27 09:54:06 PM (MST).

Step 15



- Now you will need to un-solder the wires that are connected to the motor.
- ① These websites might be helpful:
[Theoatc](#) [Wikipedia](#)

Step 16



i Once the motor is un-soldered, you can easily replace the motor. You will need to make sure you attach the wires correctly. This website might be helpful in deciding where the wires connect: [How Stuff Works](#)

To reassemble your device, follow these instructions in reverse order.