



Nostalgia Electrics RHP-310 Power Switch Replacement

This guide will outline the steps for replacing the popper's power switch.

Written By: Dana Clarke



INTRODUCTION

If the device will not turn on or has a broken power switch, use this guide to replace the switch.



TOOLS:

- [Phillips #2 Screwdriver](#) (1)
 - [iFixit Opening Tools](#) (1)
-

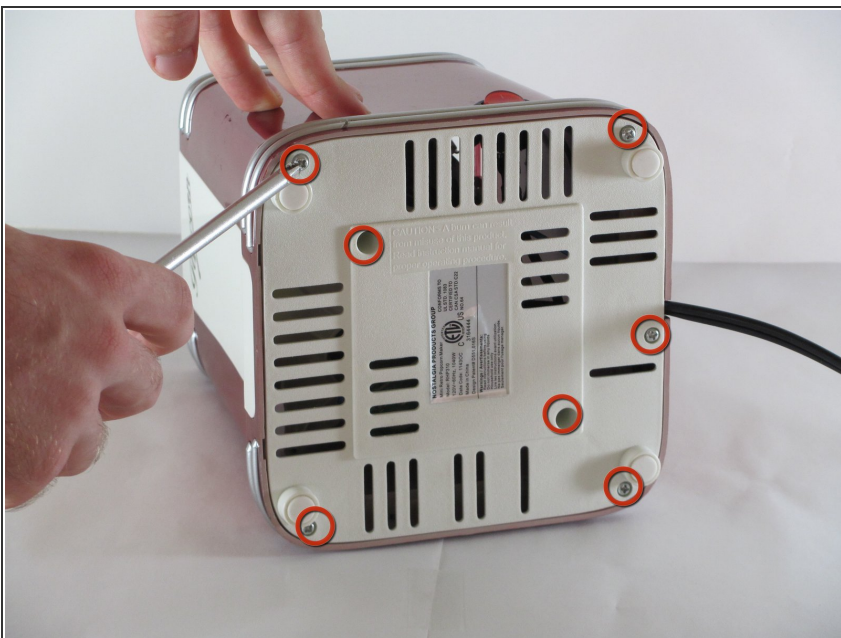
Step 1 — Power Switch



⚠ Unplug popper.

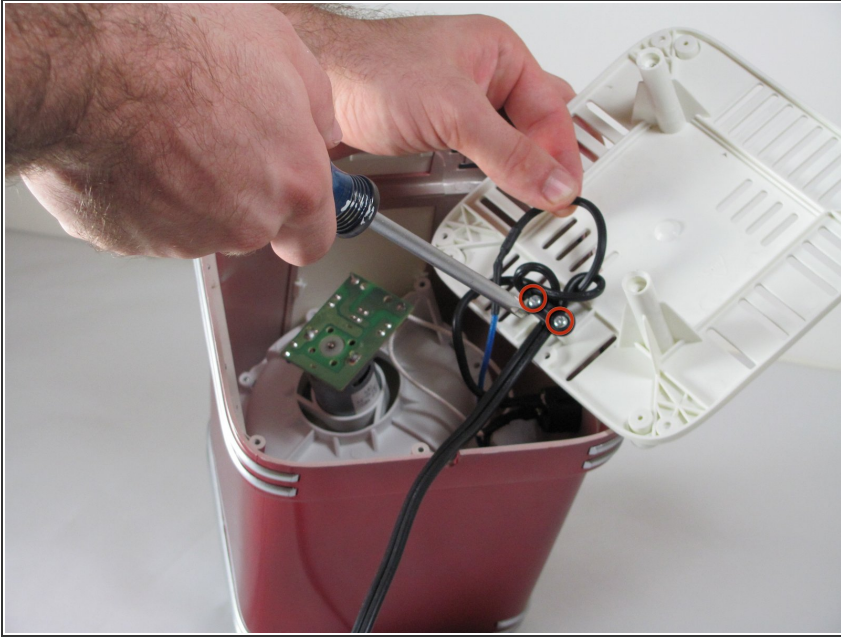
- Remove plastic lid by picking the lid up.

Step 2



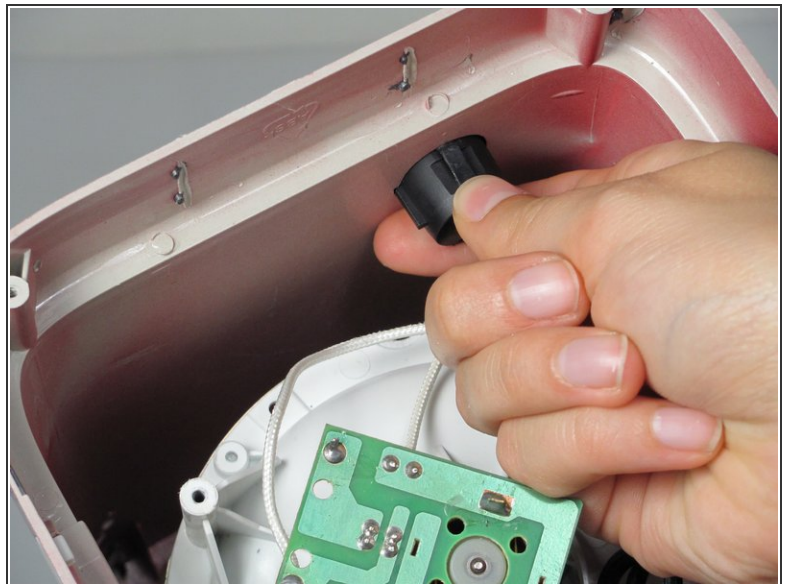
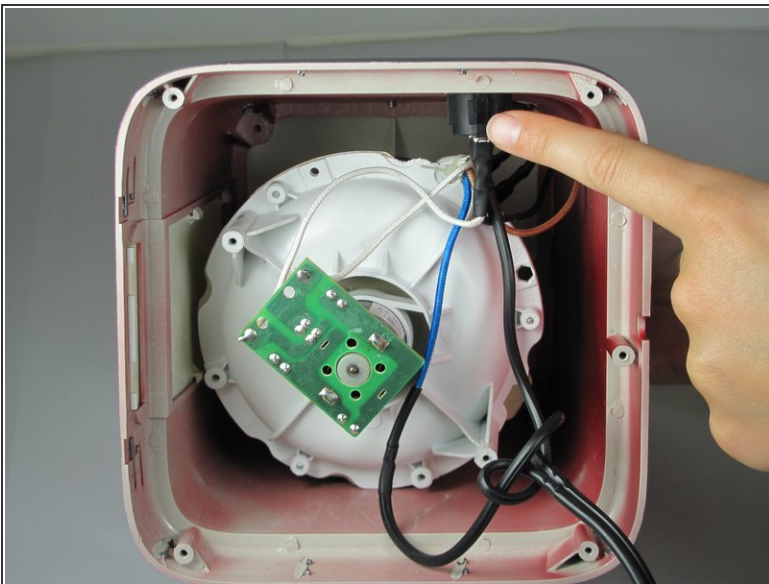
- Flip the popper on its side.
- Remove the screws on the bottom with the Phillips #2 phillips head screwdriver.
- ⓘ There are seven screws on the base. Five screws on the perimeter (12mm Philips #2 screws) and two in the middle (15 mm Philips #2 screws).

Step 3



- Remove the base.
- ⓘ Save the screws you took out of the bottom in a safe place. They will be needed to reattach the housing to the base.
- Unscrew the two screws (10 mm Philips #2 screws) from the base.
- Remove the base and set it aside for now.

Step 4



- Locate the power switch connected to the side of the housing.
- Carefully pinch the sides of the power switch.
- Push the power button up and out of the housing.

Step 5



- Now that the power switch is removed from the housing, you have to remove the wires connected to the power switch.
- Use the plastic opening tool to gently pry the wires loose from the power switch.
- ⓘ The wires should pop easily out from the power switch.

Step 6



- Remove the power switch from the device.
- You can now replace the power switch if necessary.

To reassemble your device, follow these instructions in reverse order.