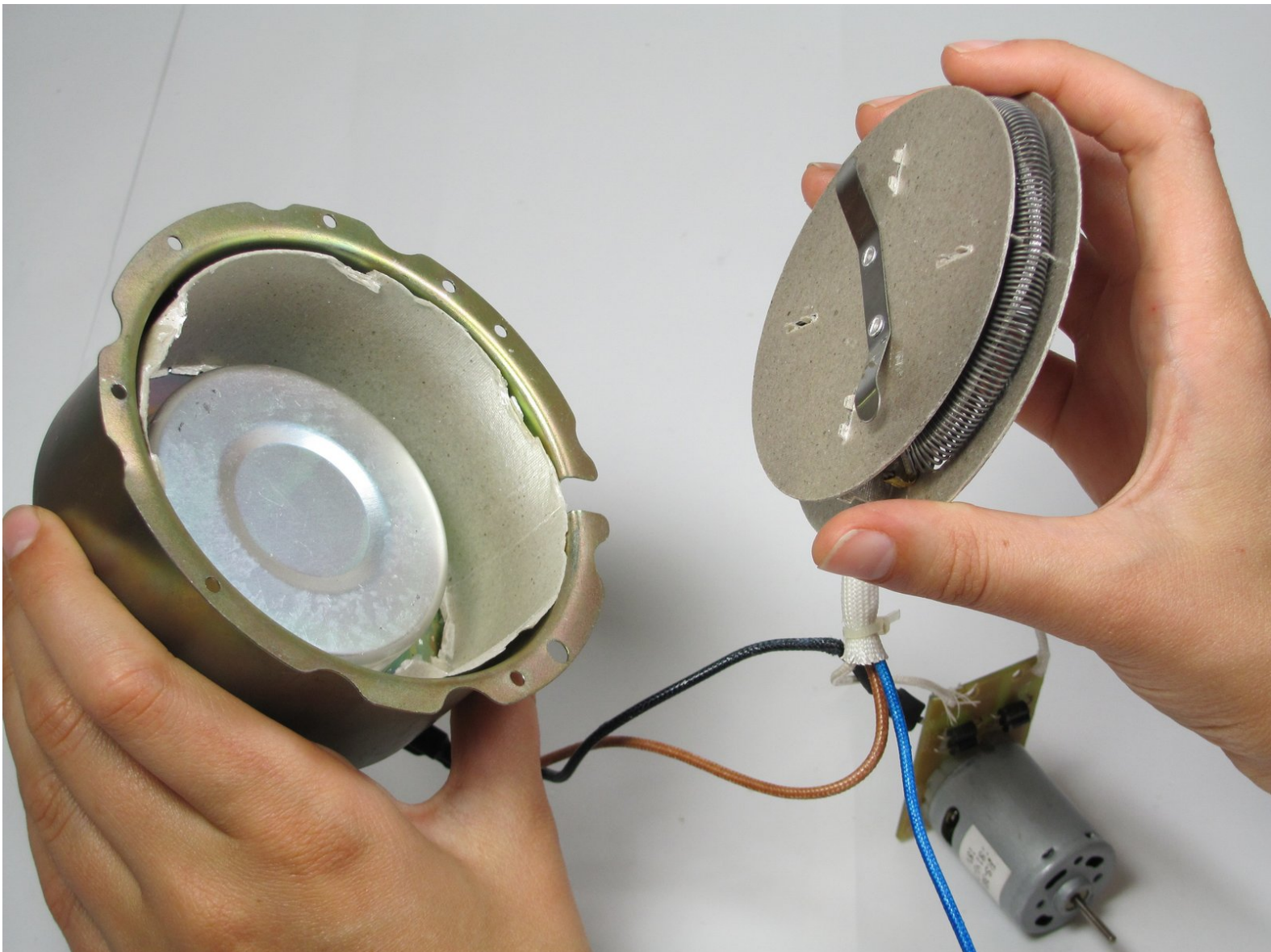




Nostalgia Electrics RHP-310 Wiring Repair

This guide will list the steps to first checking and then replacing the wiring within the device.

Written By: Dana Clarke





TOOLS:

- [Digital Multimeter](#) (1)
- [iFixit Opening Tools](#) (1)
- [Phillips #2 Screwdriver](#) (1)

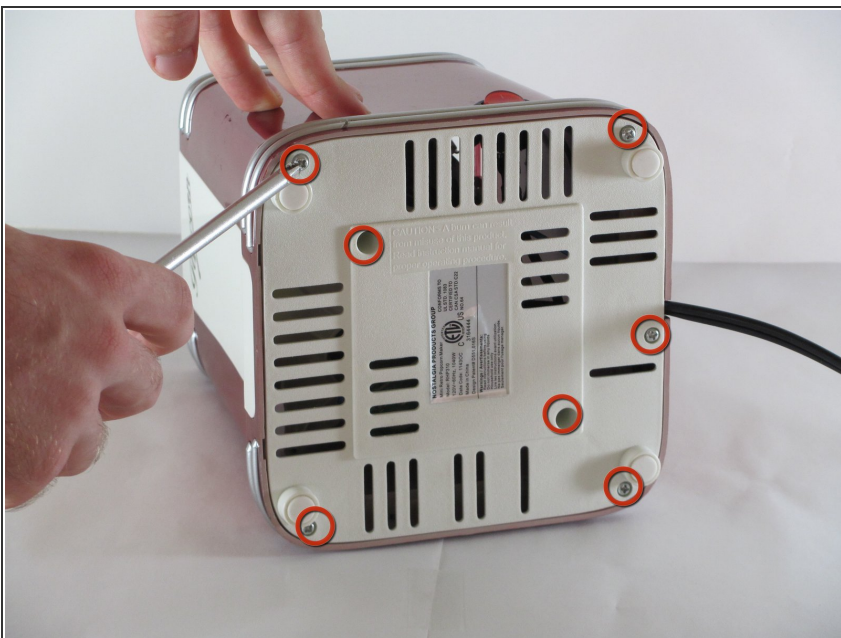
Step 1 — Power Switch



⚠ Unplug popper.

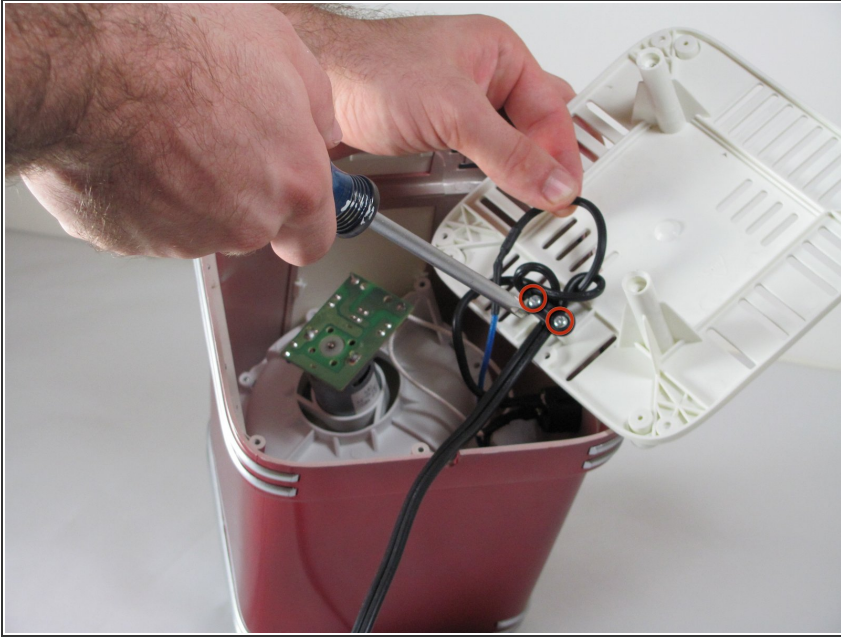
- Remove plastic lid by picking the lid up.

Step 2



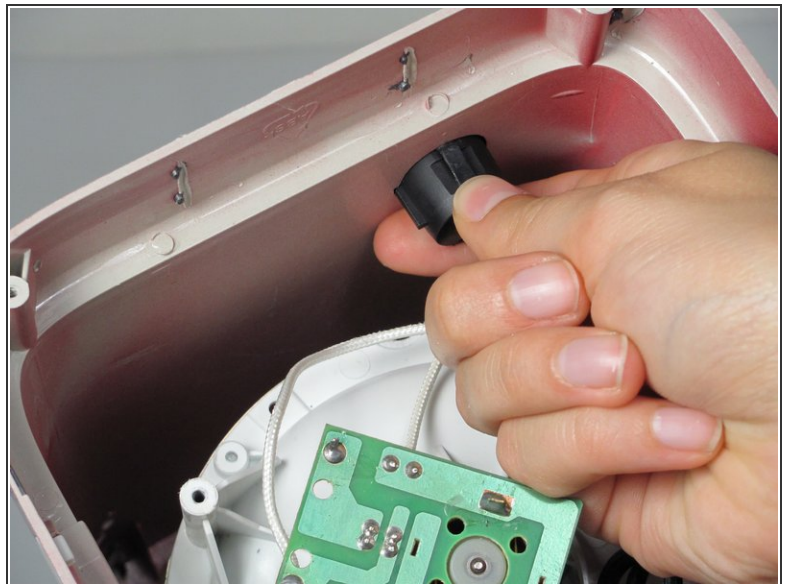
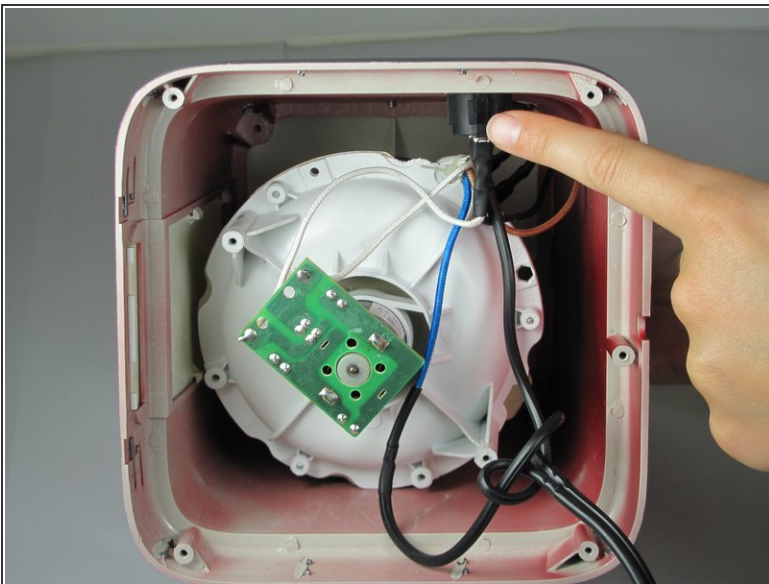
- Flip the popper on its side.
- Remove the screws on the bottom with the Phillips #2 phillips head screwdriver.
- ⓘ There are seven screws on the base. Five screws on the perimeter (12mm Philips #2 screws) and two in the middle (15 mm Philips #2 screws).

Step 3



- Remove the base.
- ⓘ Save the screws you took out of the bottom in a safe place. They will be needed to reattach the housing to the base.
- Unscrew the two screws (10 mm Philips #2 screws) from the base.
- Remove the base and set it aside for now.

Step 4



- Locate the power switch connected to the side of the housing.
- Carefully pinch the sides of the power switch.
- Push the power button up and out of the housing.

Step 5



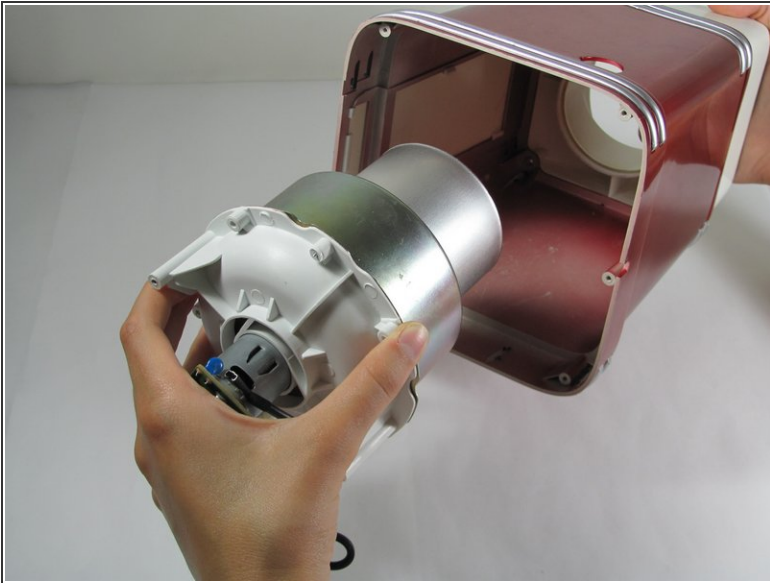
- Now that the power switch is removed from the housing, you have to remove the wires connected to the power switch.
- Use the plastic opening tool to gently pry the wires loose from the power switch.
- ❗ The wires should pop easily out from the power switch.

Step 6



- Remove the power switch from the device.
- You can now replace the power switch if necessary.

Step 7 — Replacing Housing



- Now that the power switch is disconnected from the popper, you will need to remove the white top.
- Gently remove the heating component from the popper.
- Unscrew the four screws (11mm Philips #2 screws) that connect the white top to the housing.

Step 8



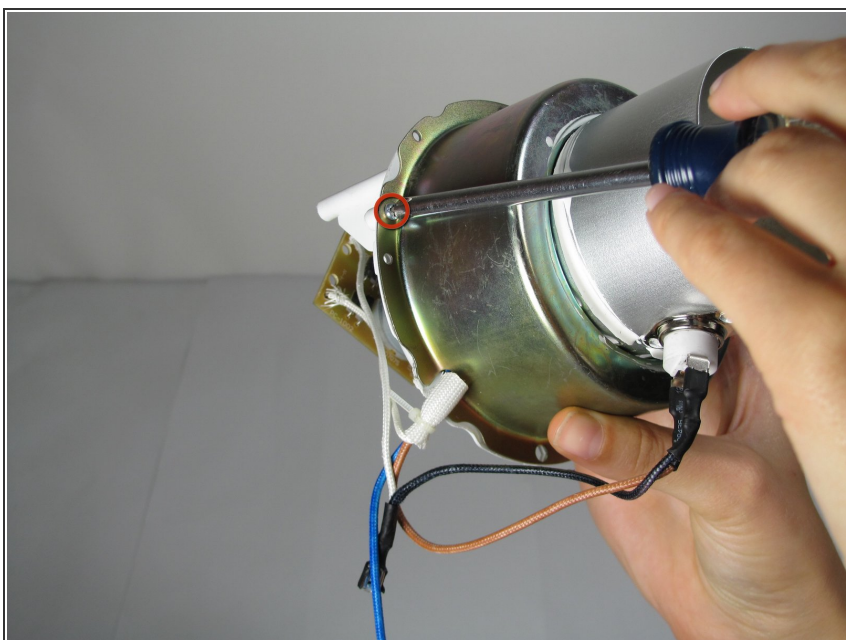
- Remove the white top from the housing.
- ⓘ Save the screws from previous step. You will need them to connect the new housing to the white top.

Step 9 — Replacing Fan



- Now that the white top is disconnected from the housing, remove the heating component from inside the device.

Step 10



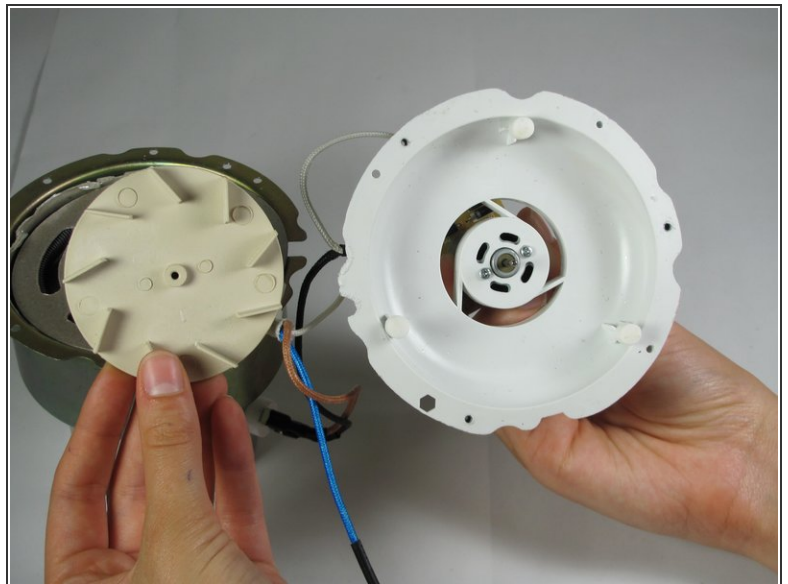
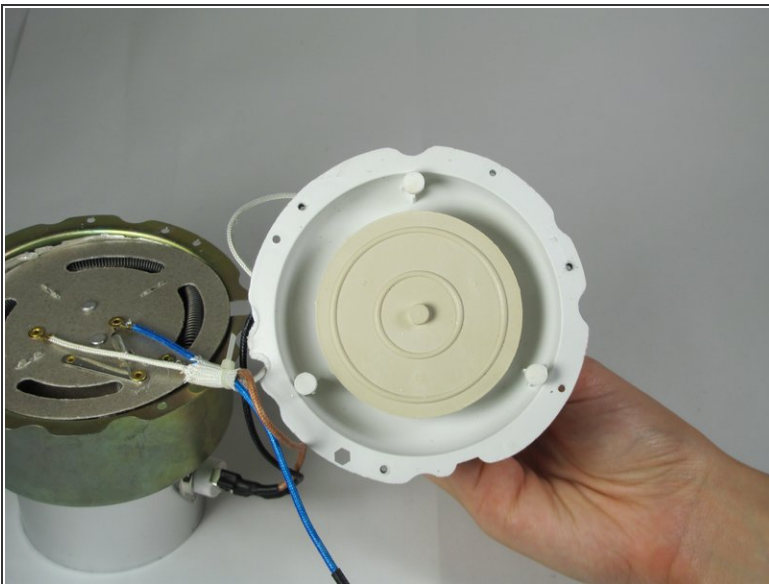
- Unscrew the three screws (10 mm Philips #2 screws) that hold the heating component together.

Step 11



- ① Make sure to keep the screws. You will need them to put the heating component back together.
- Pull the heating component apart.

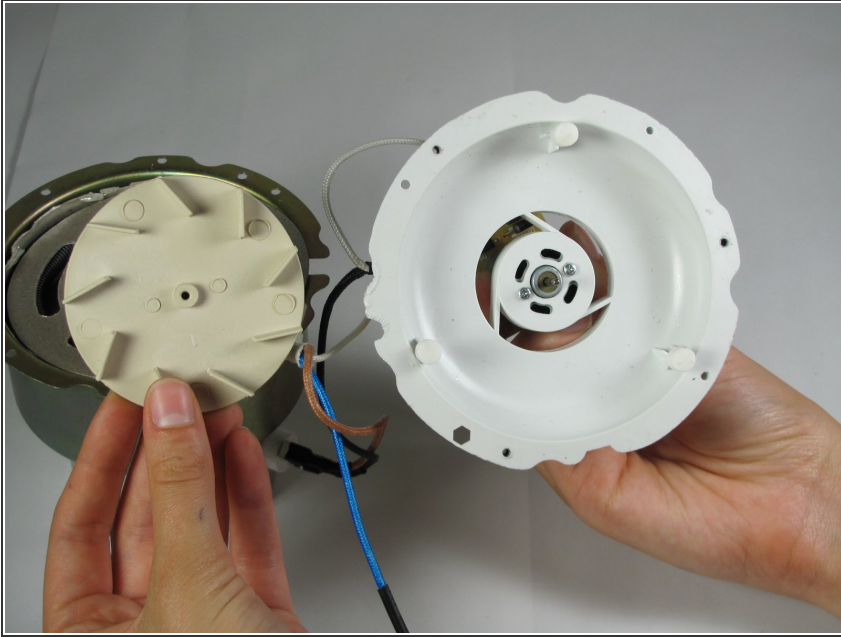
Step 12



- Locate the fan.
- Pull the fan off the motor firmly but gently.

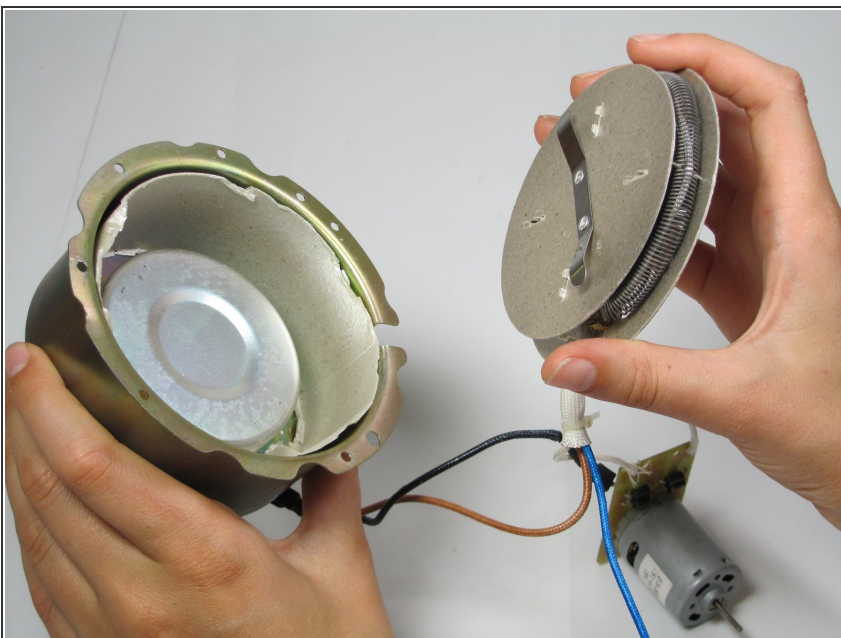
⚠ When you pull the fan off the motor, be careful. Do not pull too hard or you will break the motor.

Step 13



- You can now replace the fan.
- ☑ If there is debris stuck in the fan, you can easily clean it out from the fan in this step.

Step 14 — Nostalgia Electrics RHP-310 Wiring Repair



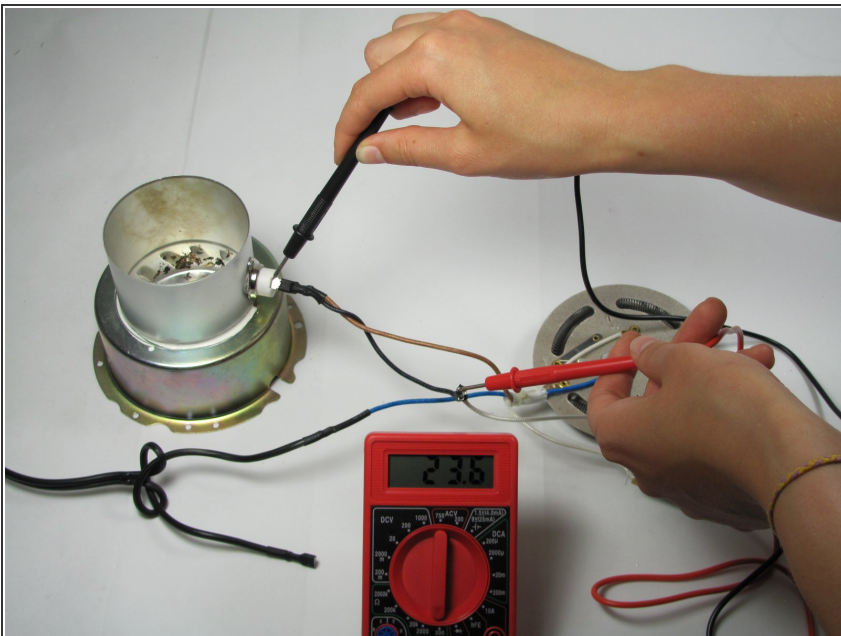
- Take the heating coil out of complete heating component.

Step 15



- Visually check the wires for frayed wires.
- Make sure that the wires are completely connected to a port.


Step 16



- If you see a wire that is not connected, solder it back into place.
- ① These websites might be helpful in soldering: [Wikipedia](#) [Theoatc](#)
- Also, use a digital multi-meter to check to make sure there is a current through the wire. If the meter does not read, you might need to replace all the wires.
- ① This website may be helpful in with wiring: [How Stuff Works](#)

Step 17



 This website will help with reconnecting wires: [eHow](#)

To reassemble your device, follow these instructions in reverse order.