



Nostalgia GCM200 Heating Bowl Replacement

If you need to replace the heating bowl, this guide will teach you, how to do it .

Written By: Xingdi Zhou



INTRODUCTION

This guide will show you how to replace the heating bowl.



TOOLS:

- [64 Bit Driver Kit](#) (1)



PARTS:

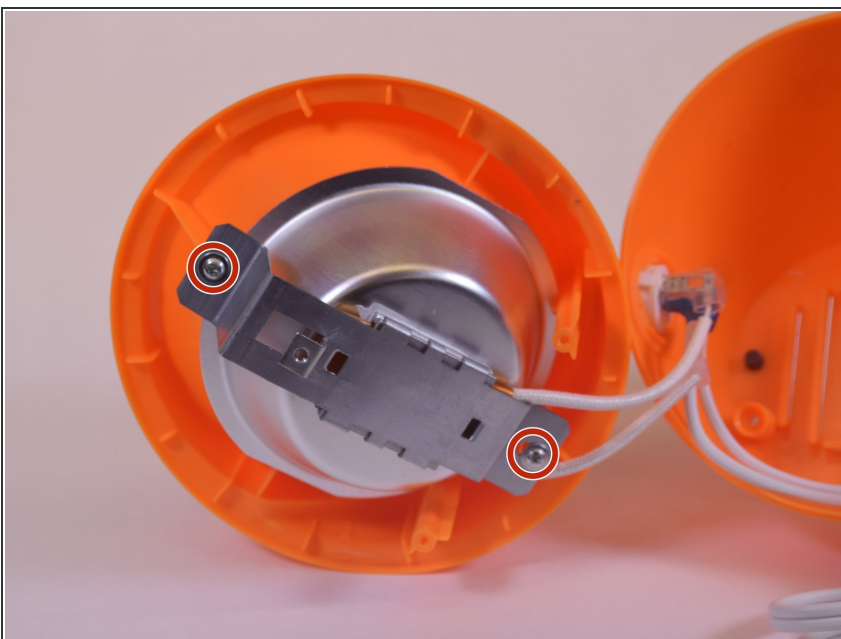
- [Bowl](#) (1)

Step 1 — Nostalgia GCM200 Disassembly



- Remove the two 1.3 mm Phillips #2 screws.
- Remove the S6 spanner screw.
- ☑ Carefully place these three screws somewhere safe to use later in reassembly.

Step 2



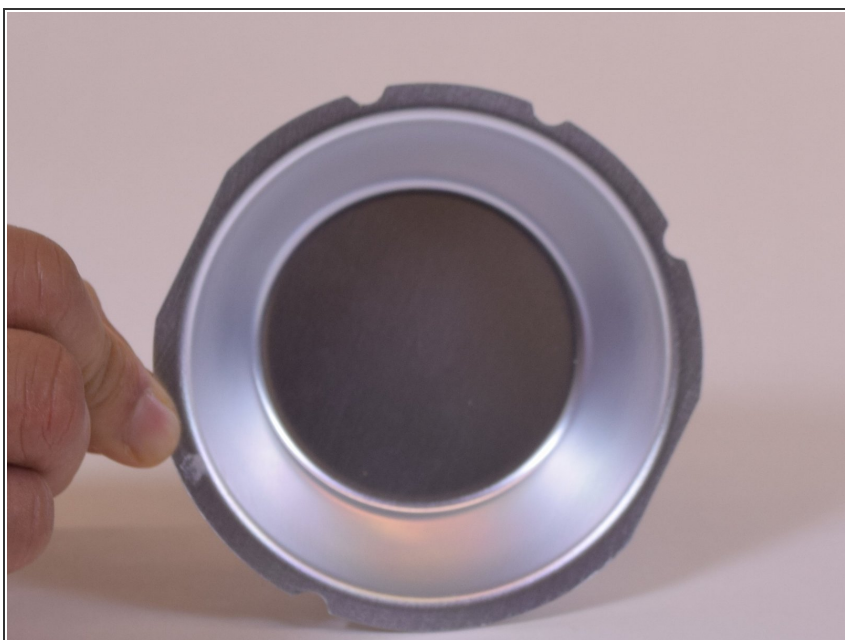
- Split the device in half to expose the internal parts of the device.
- Again, there are two more Phillips screws to remove.

Step 3



- Remove the two screws from both sides of the heating coil.

Step 4 — Heating Bowl



- Remove the heating bowl from the plastic housing.

Follow the instruction and you will know how to replace the bowl for this device