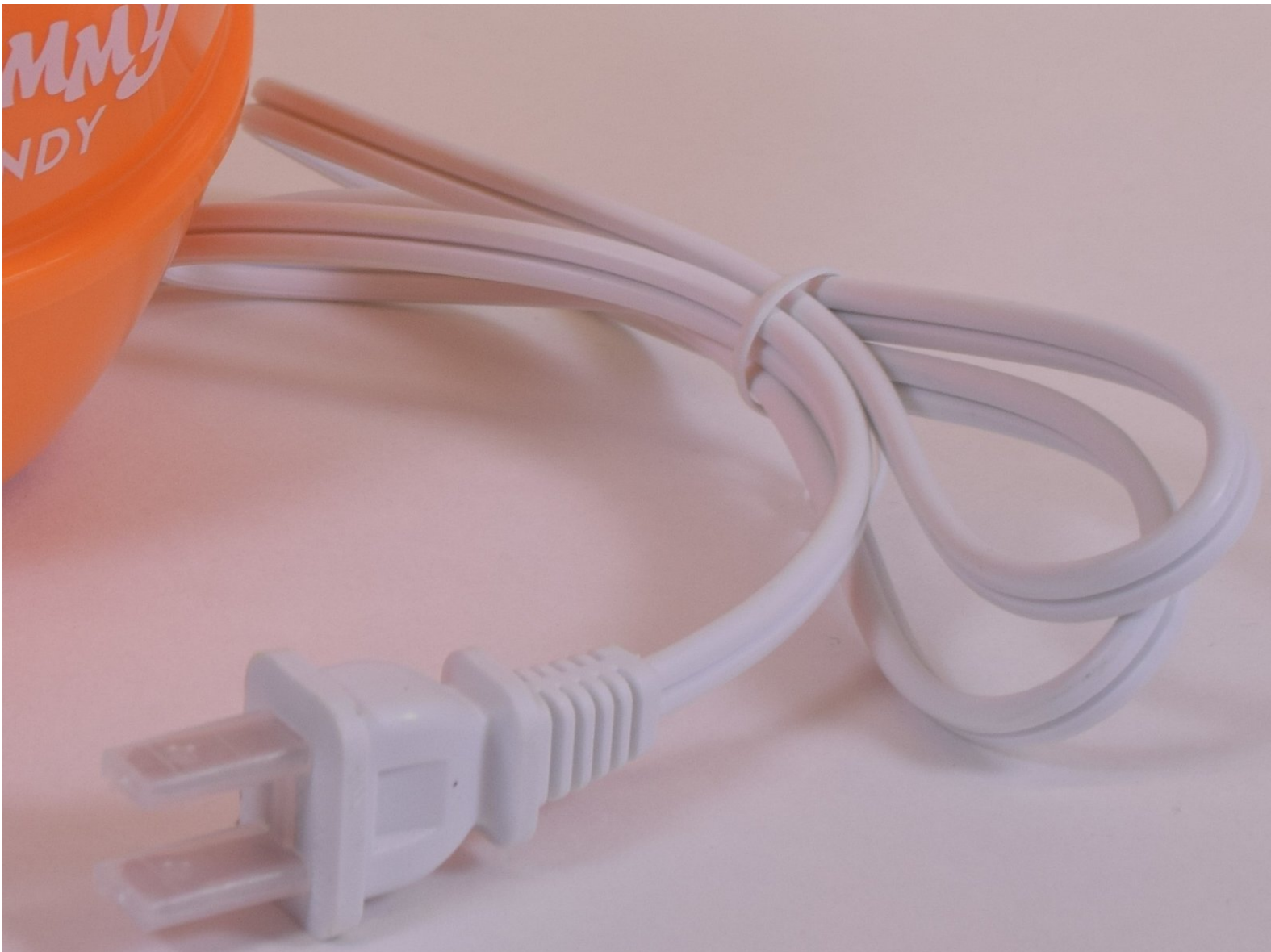




# Nostalgia GCM200 Power Cable Replacement

Replace the Nostalgia GCM200 power cable or heating coil or bowl at once.

Written By: Praful Busa



## INTRODUCTION

This is a replacement guide that teaches you how to replce power cable for Nostalgia GCM-200.



### TOOLS:

- [64 Bit Driver Kit](#) (1)



### PARTS:

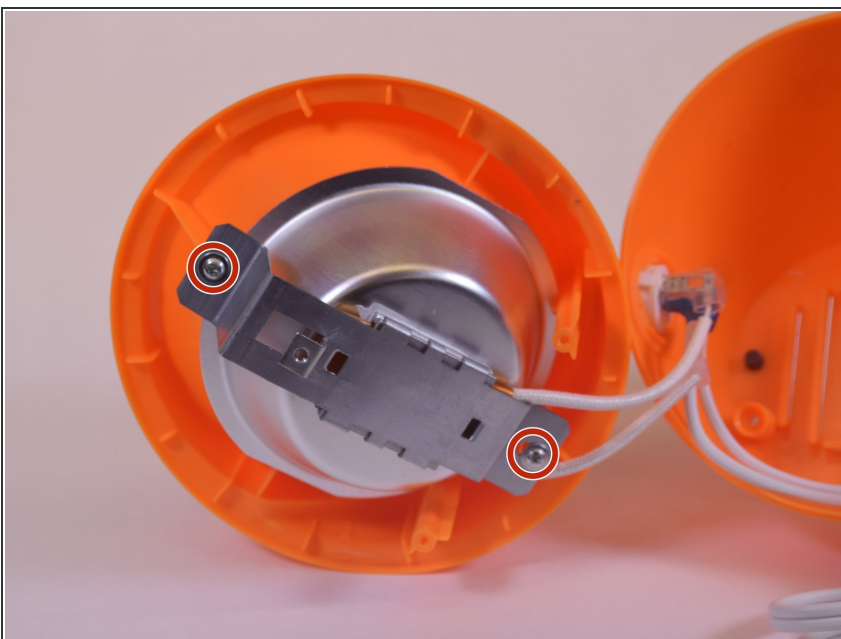
- [Power cable](#) (1)

## Step 1 — Nostalgia GCM200 Disassembly



- Remove the two 1.3 mm Phillips #2 screws.
- Remove the S6 spanner screw.
- ☑ Carefully place these three screws somewhere safe to use later in reassembly.

## Step 2



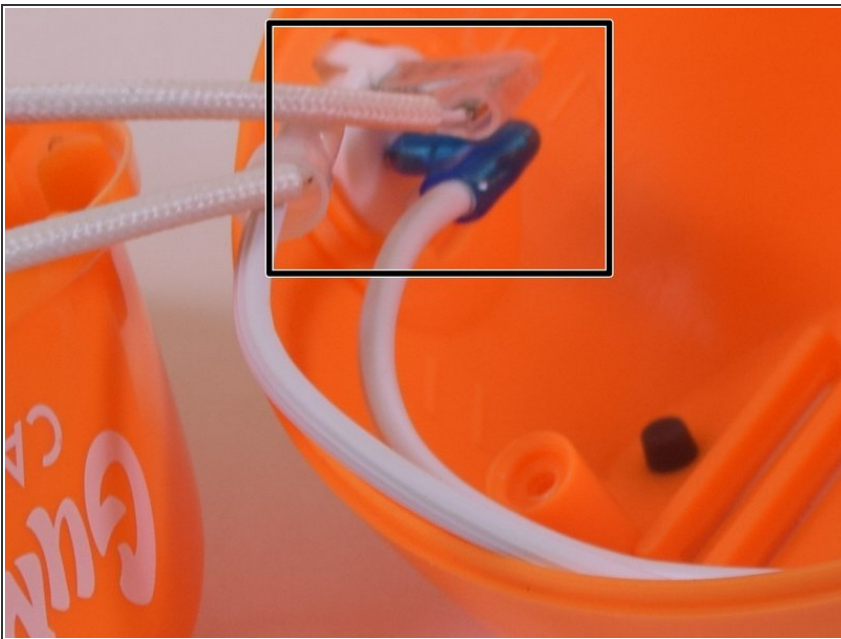
- Split the device in half to expose the internal parts of the device.
- Again, there are two more Phillips screws to remove.

### Step 3



- Remove the two screws from both sides of the heating coil.

### Step 4 — Power Cable



- Remove (flexible) plastic sleeves from the inside end of the power cable.
- ⓘ You might want to use force, pull out while shaking it.

To reassemble your device, follow these instructions in reverse order.