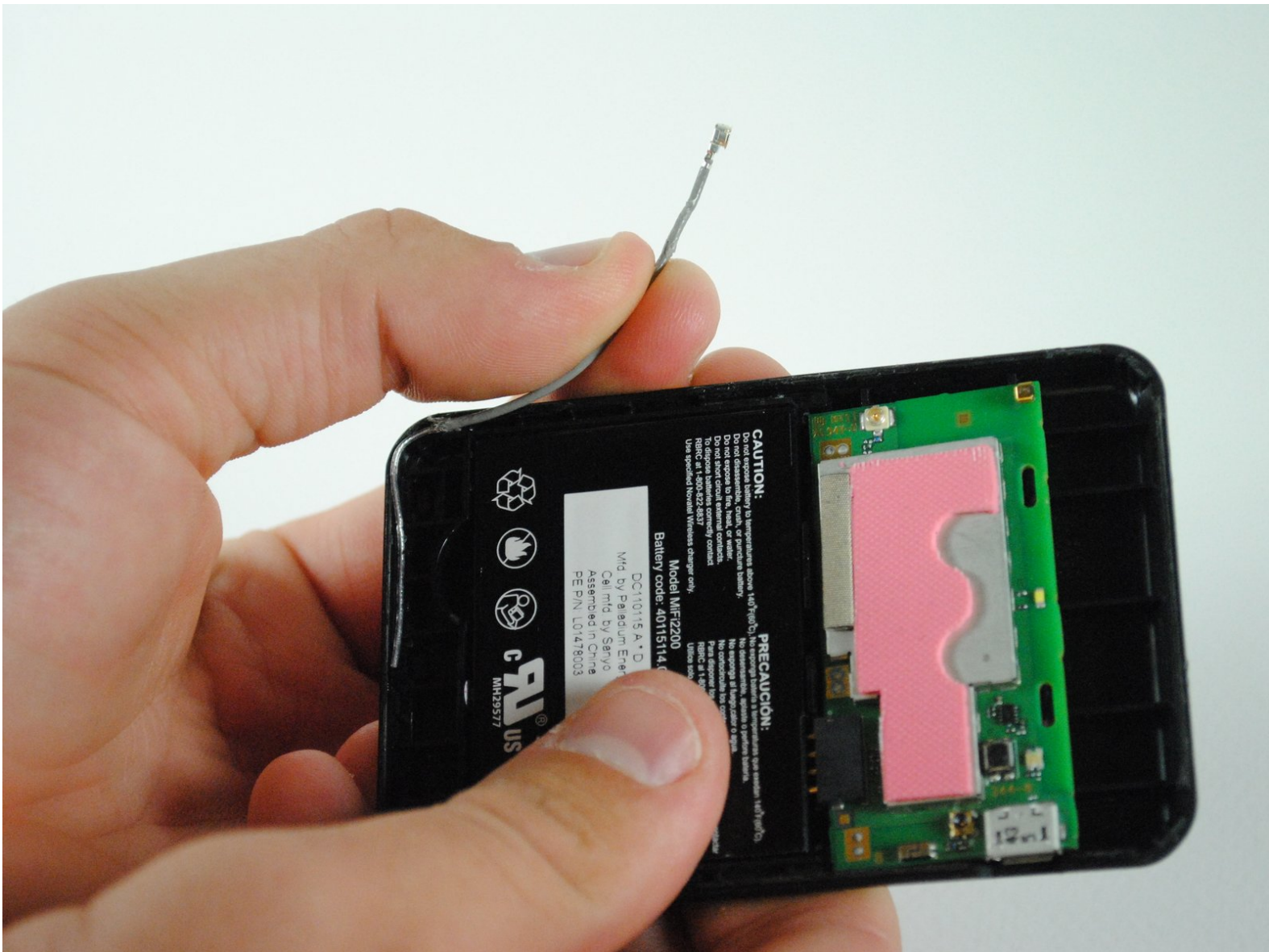




# Novatel MiFi 2200 Antenna Replacement

If you can not establish a wireless connection, problems may be occurring with your antenna. This guide will instruct how to replace the antenna.

Written By: Carissah



## INTRODUCTION

Connection problems may occur with this device due to a faulty or broken antenna. You can contact your service provider or search online to purchase a new antenna to replace. This guide give instructions on how to replace antenna.

---

### TOOLS:

- [double-sided stick tape](#) (1)
  - [Metal Spudger](#) (1)
-

## Step 1 — Battery



- Remove the rear cover by pressing down on the cover and pulling it away from the device.

## Step 2



- Place your finger on the back of the battery located near the edge of the device.
- Push your finger into the battery and lift up to pop the battery out of the device.



## Step 3 — Case



- Using a metal spudger, pry open the device around the seam between the front and back cover.

⚠ It may be difficult to split apart, so use force with caution.

ⓘ It may seem like you are breaking the device, but you will only be breaking the adhesive lining that keeps the device sealed.

## Step 4



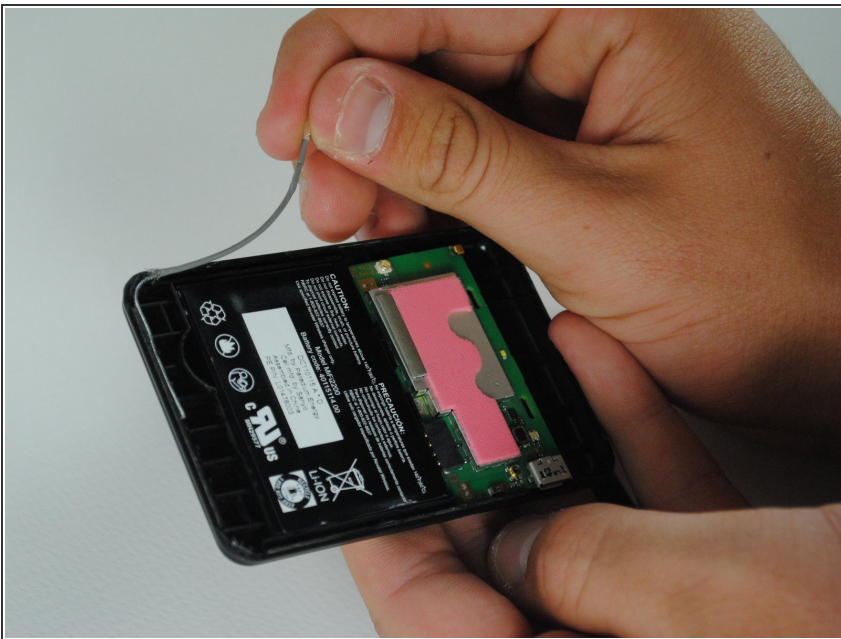
- Once the seal has been broken all the way around, open the cases using your hands.

## Step 5 — Antenna



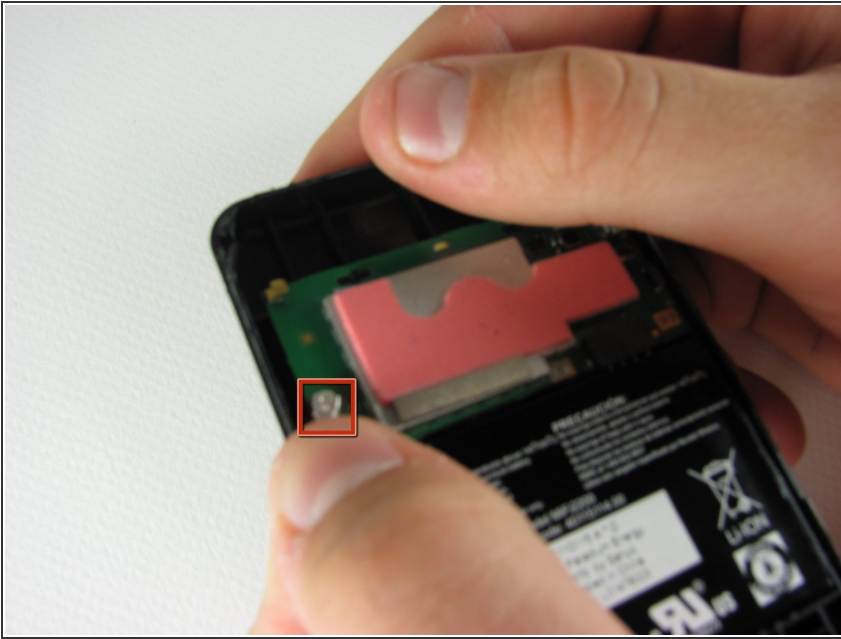
- To disconnect the antenna, pull up on the antenna's connection to the circuit board until it pops off.

## Step 6



- Carefully pull out the antenna along the edge of the device.
- There is adhesive applied to the antenna, so it may not easily detach.

## Step 7



- Reconnect your new antenna to the circuit board in the same position described in step 3.

## Step 8



- Re-lay antenna around the edge and over the adhesive.
- ⓘ The antenna can be fitted back into several small recesses along the groove that it was originally inside.



## Step 9



- Apply double-sided stick tape to the inner top and bottom halves of the device along the seam that was previously unsealed.
- Snap the two halves together along the adhesive line to reconnect it as it previously was.

With a new antenna, your device should be transmitting a signal as expected. Keep in mind that you will need adhesive tape to keep the device firmly together.