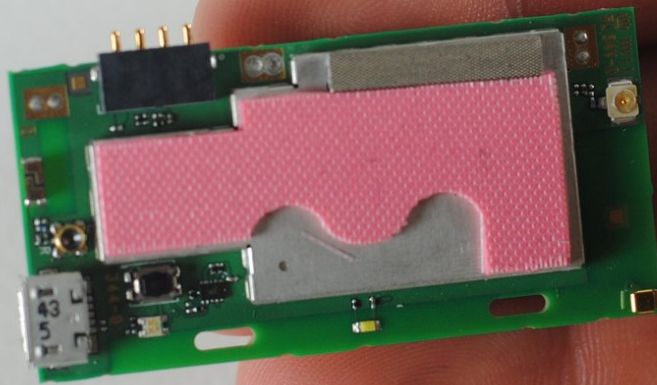




# Novatel MiFi 2200 Circuit Board Replacement

This guide will instruct how to replace a damaged circuit board for a Novatel Mifi 2200. The circuit board must be replaced as a whole.

Written By: Justin Russo



---

## INTRODUCTION

If major problems occur with the device and problems still can not be fixed after following troubleshooting guides, there may be a circuit board issue. This guide gives instructions on how to replace a broken circuit board.

---

### TOOLS:

- [Metal Spudger](#) (1)
-

## Step 1 — Battery



- Remove the rear cover by pressing down on the cover and pulling it away from the device.

## Step 2



- Place your finger on the back of the battery located near the edge of the device.
- Push your finger into the battery and lift up to pop the battery out of the device.

## Step 3 — Case

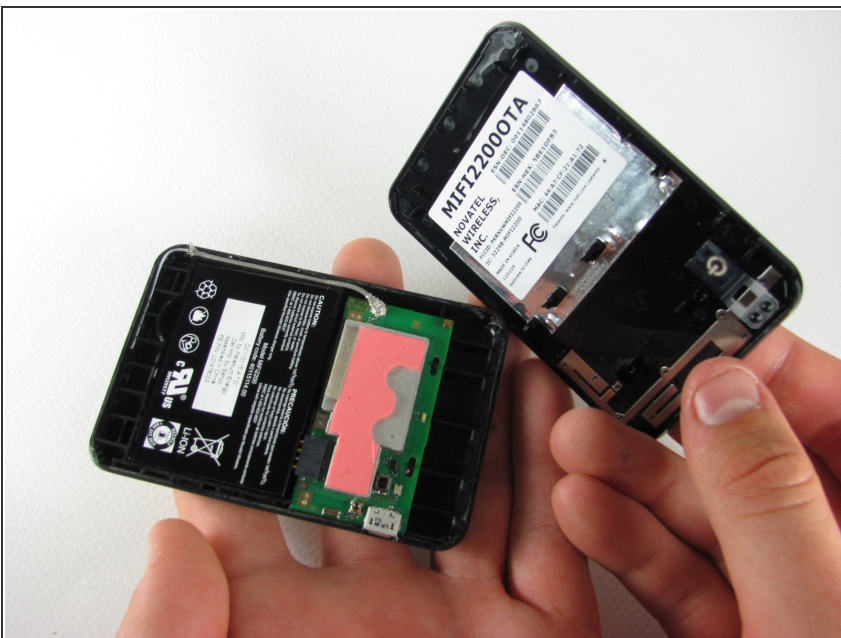


- Using a metal spudger, pry open the device around the seam between the front and back cover.

⚠ It may be difficult to split apart, so use force with caution.

ℹ It may seem like you are breaking the device, but you will only be breaking the adhesive lining that keeps the device sealed.

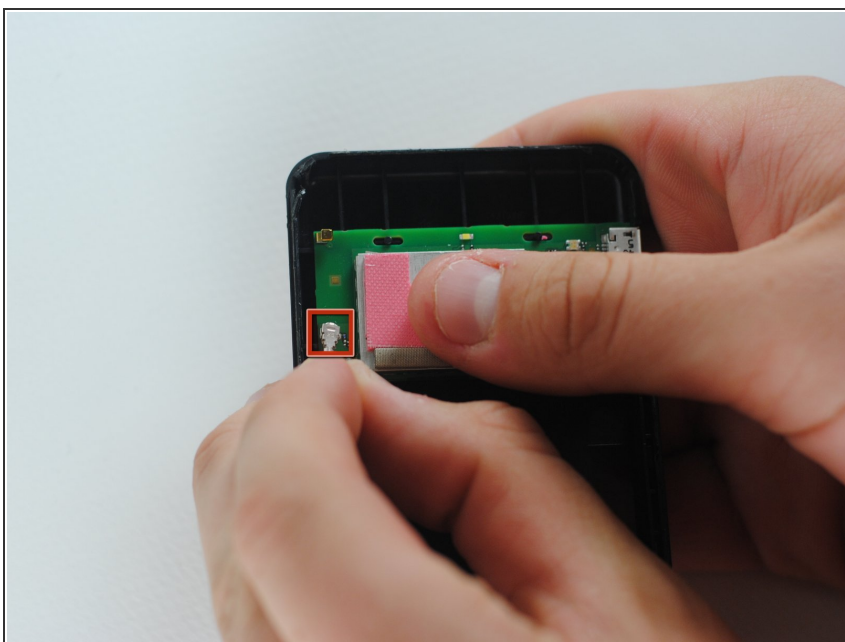
## Step 4



- Once the seal has been broken all the way around, open the cases using your hands.

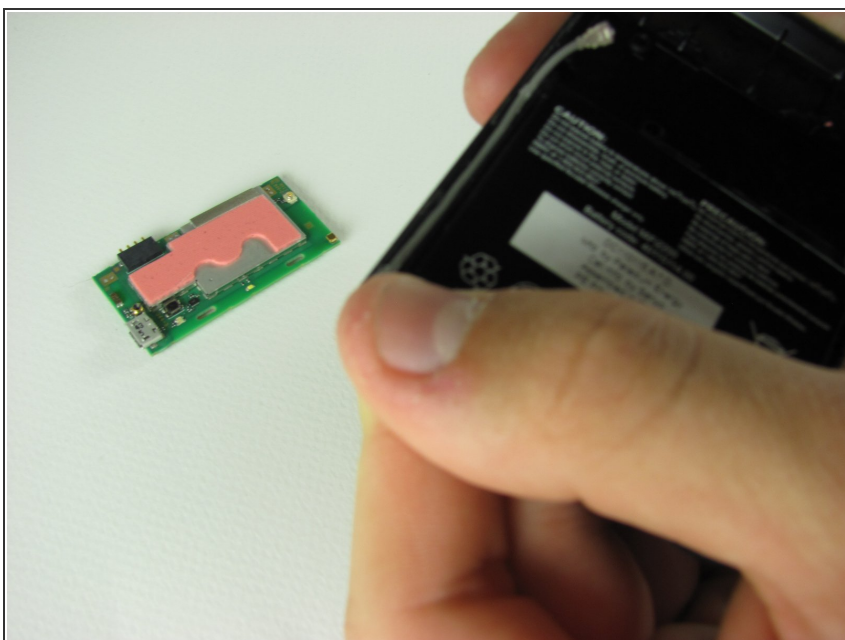


## Step 5 — Circuit Board



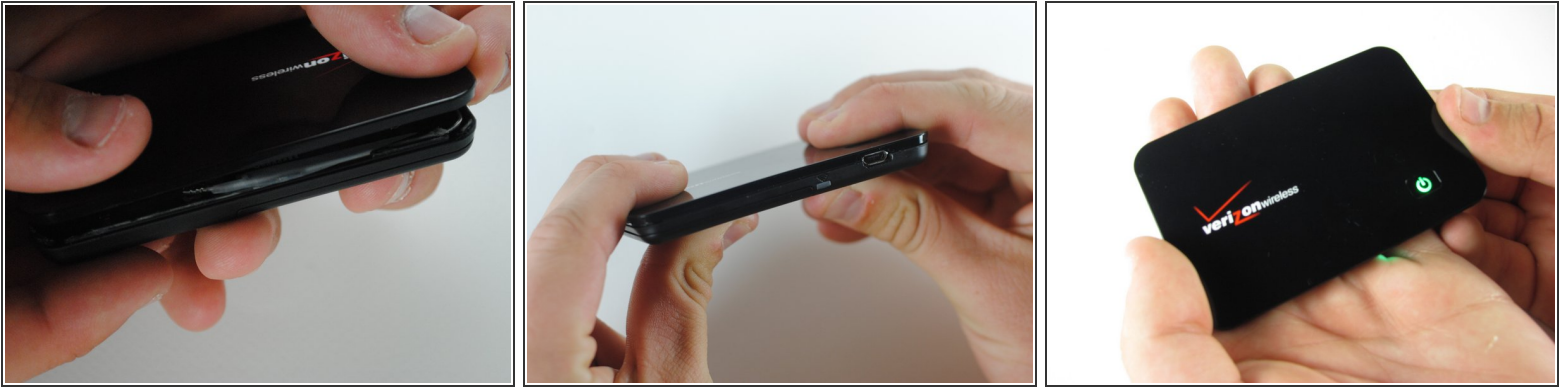
- To disconnect the antenna, pull up on the antenna's connection to the circuit board until it pops off.

## Step 6



- Simply pick up the circuit board with your fingers and remove it from the case.

## Step 7



- Apply double-sided stick tape to the inner top and bottom halves of the device along the seam that was previously unsealed.
- Snap the two halves together along the adhesive line to reconnect it as it previously was.

After the circuit board is replaced the device should function properly again. When reassembling the device, keep in mind that you will need adhesive to keep the device together.