



NuVision 10.1 Atom Battery Replacement

How to access and replace the battery in your NuVision 10.1 Atom.

Written By: Carly Daniele



INTRODUCTION

Make sure to be very careful when handling the battery, lithium batteries are prone to exploding when bent or punctured. If the device is experiencing a short life span or any other issues regarding the battery, follow this guide to replace the battery.



TOOLS:

- [Tweezers - Pro/ESD/Angled](#) (1)
 - [Phillips #000 Screwdriver](#) (1)
 - [iFixit Opening Tools](#) (1)
-

Step 1 — Camera



- Turn the device screen side down.
- Carefully remove the back piece with the iFixit opening tool.

Step 2



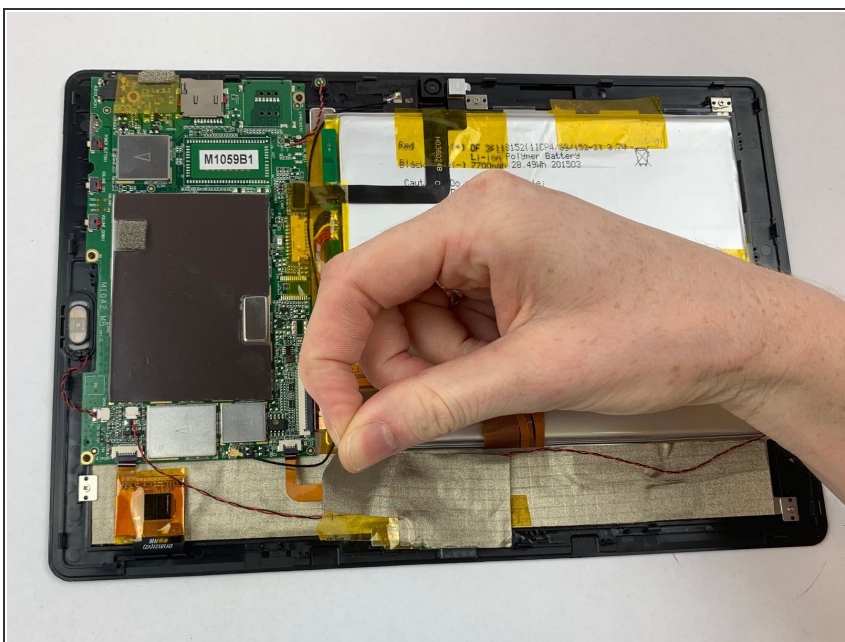
- Remove the yellow tape covering the motherboard gently with your fingers.

Step 3



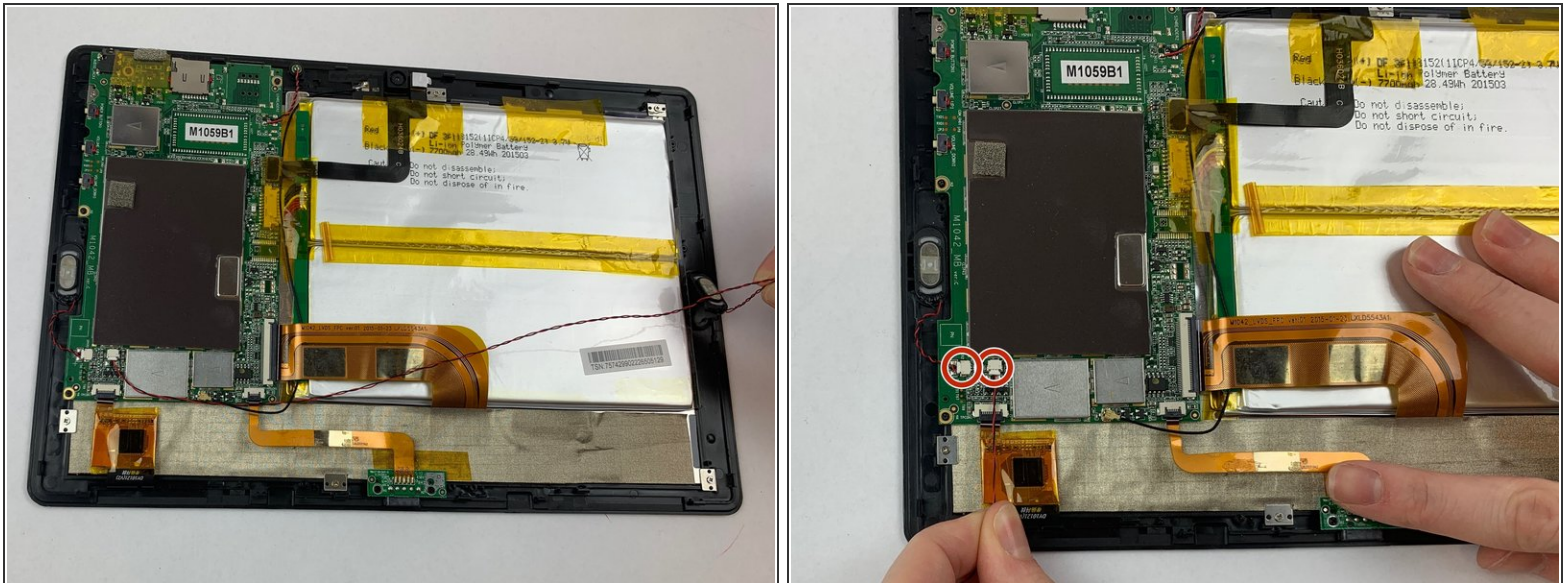
- Pull the camera plug upward and away from the motherboard with your fingers.
- Gently pull the camera from the device. The camera is held by tension.

Step 4 — Speaker



- Carefully remove silver tape with your fingers.

Step 5



- Remove speakers gently using your fingers, they pop out easily.
- Disconnect cords attached to the speaker from white pod.

Step 6 — Motherboard



- Disconnect the press-fit black and red curly wire from where it connects on the motherboard.

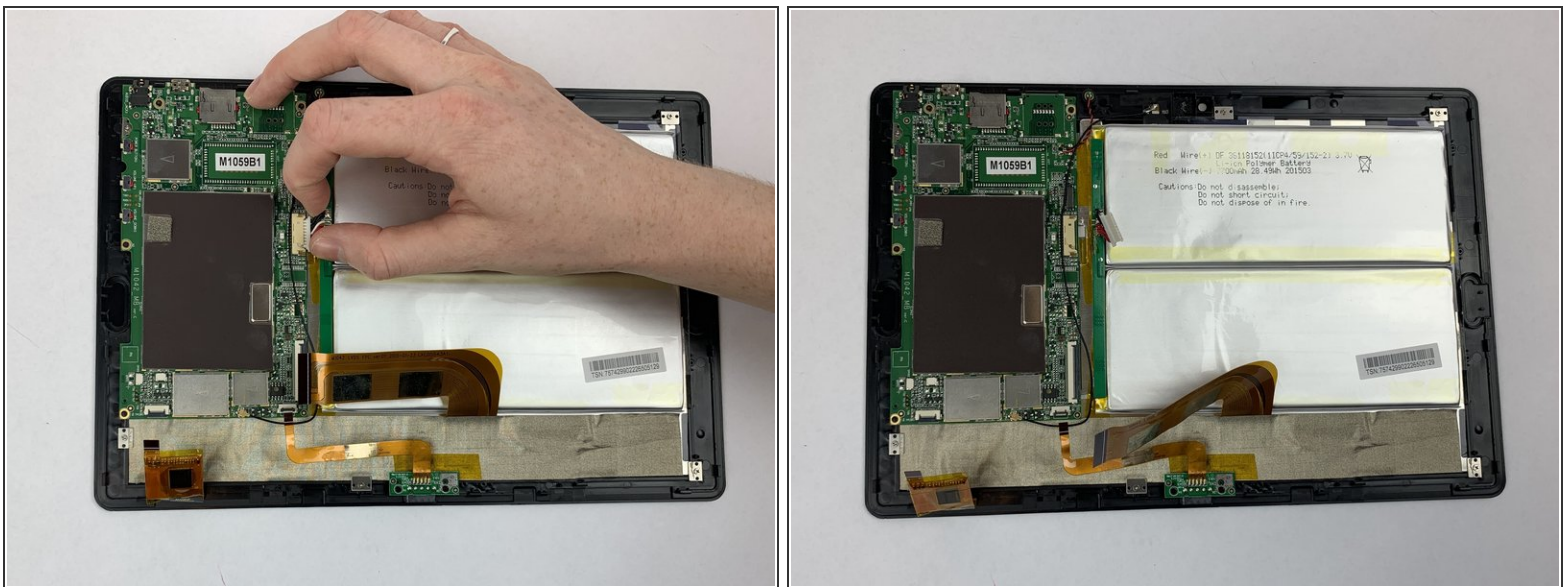
Step 7



- Gently remove the battery's three ZIF connectors from the motherboard. Use your fingers.

⚠ Be careful not to puncture the battery.

Step 8



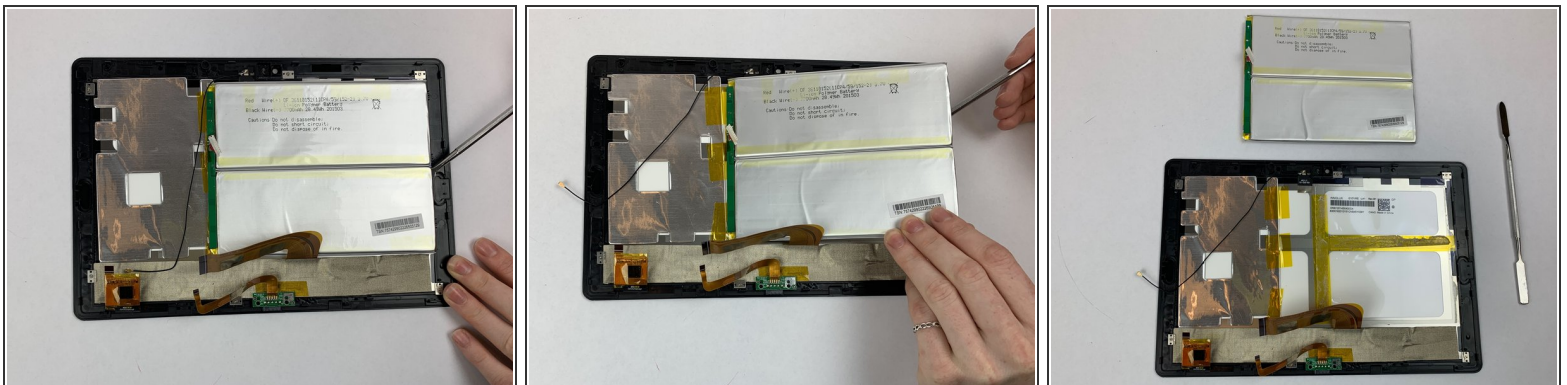
- Disconnect the battery's bundled cable connector from the motherboard with fingers.

Step 9



- Remove the four black 3.32mm screws on the corners of the motherboard using the Phillips #000 screwdriver. The motherboard should come out easily.

Step 10 — Battery



- Pry the battery away from the display screen gently using a nylon spudger or the plastic opening tools.
- ⚠ Using a metal spudger may bend or puncture the battery. Lithium batteries are prone to explode.
- ⓘ There is a lot of adhesive, take your time and be careful.

To reassemble your device, follow these instructions in reverse order.