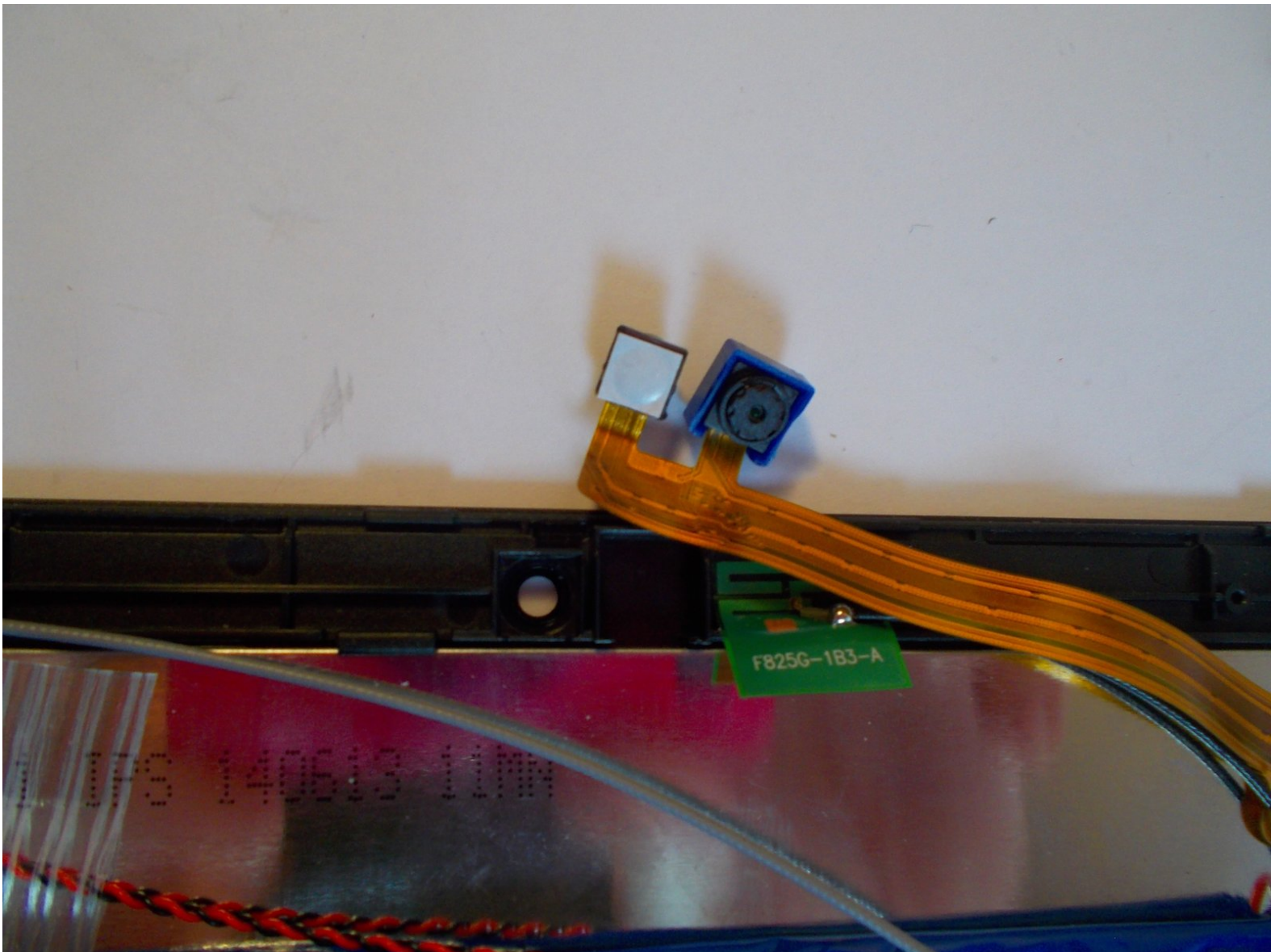




NuVision TM1088 Camera Replacement

Replacing a broken front and rear camera.

Written By: Nathaniel Nasman



INTRODUCTION

This guide will show you how to remove the front and rear cameras. The front and rear cameras must be replaced together.

TOOLS:

- [iFixit Opening Tools](#) (1)
-

Step 1 — Rear Cover



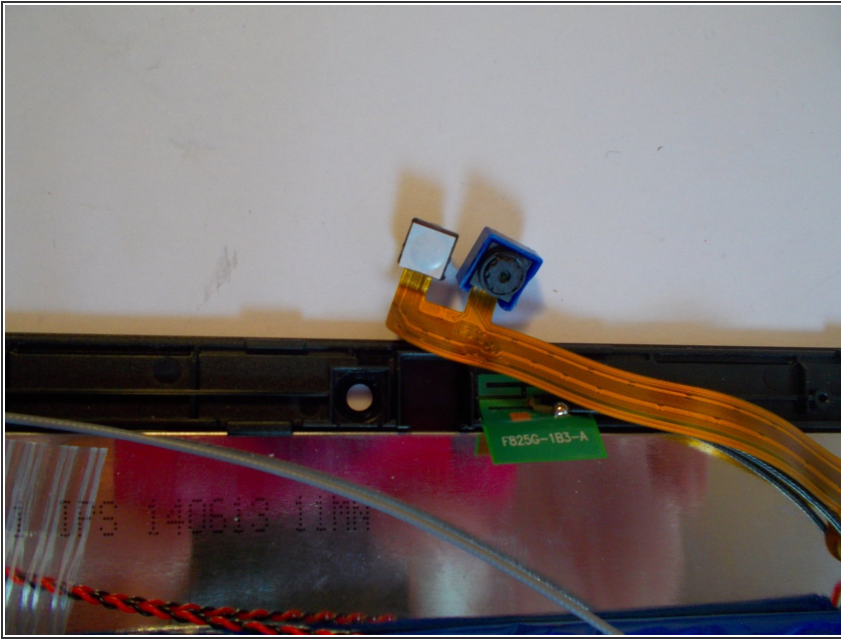
- Place the plastic opening tool between the front and rear cover and pry up on each corner of the cover.

Step 2 — Camera



- Pull camera plug upward and away from the motherboard.

Step 3



- Remove each camera from the front cover assembly. They are simply held in by tension.

To reassemble your device, follow these instructions in reverse order.