



# Nude Move S Teardown

Written By: Phoebe Kirkland





## TOOLS:

- [Essential Electronics Toolkit \(1\)](#)
-

## Step 1 — Speaker before tear down



- Insert wisdom here.

## Step 2 — Remove the cable



- Insert wisdom here.

### Step 3 — Remove the external case



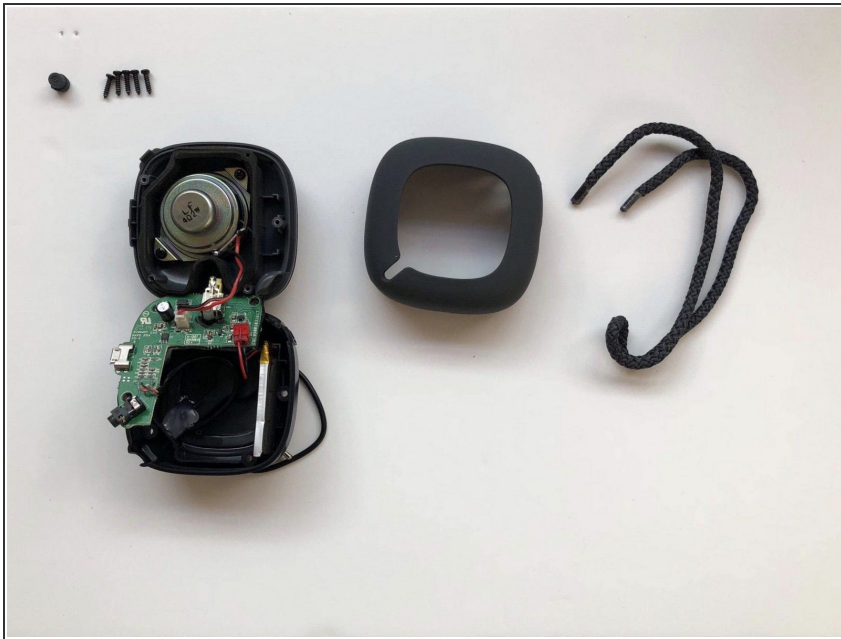
- Insert wisdom here.

### Step 4 — These are the three elements so far



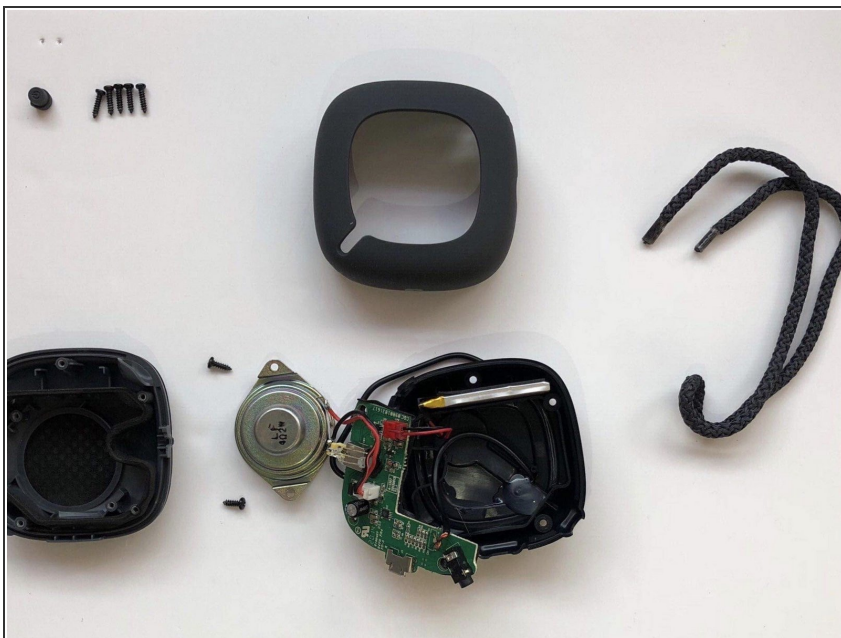
- Insert wisdom here.

## Step 5 — Remove the PCB and silicone button



- Insert wisdom here.

## Step 6 — This shows the parts so far



- Insert wisdom here.



## Step 7 — Internal case removal and taking the speaker off of the pcb



- Insert wisdom here.