



Nudeaudio Move S Wired Teardown

A simple teardown of the device.

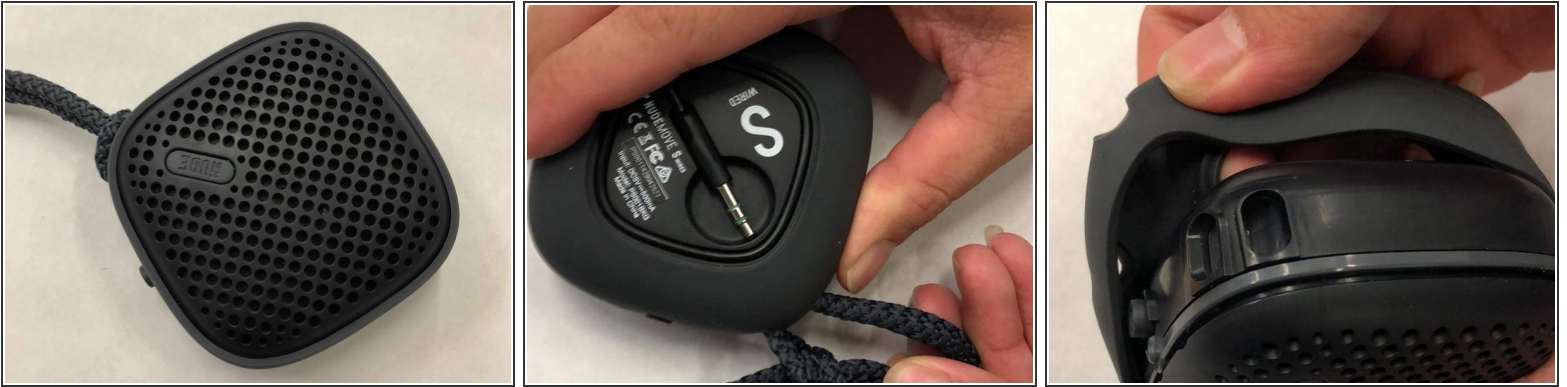
Written By: Jim



 **TOOLS:**

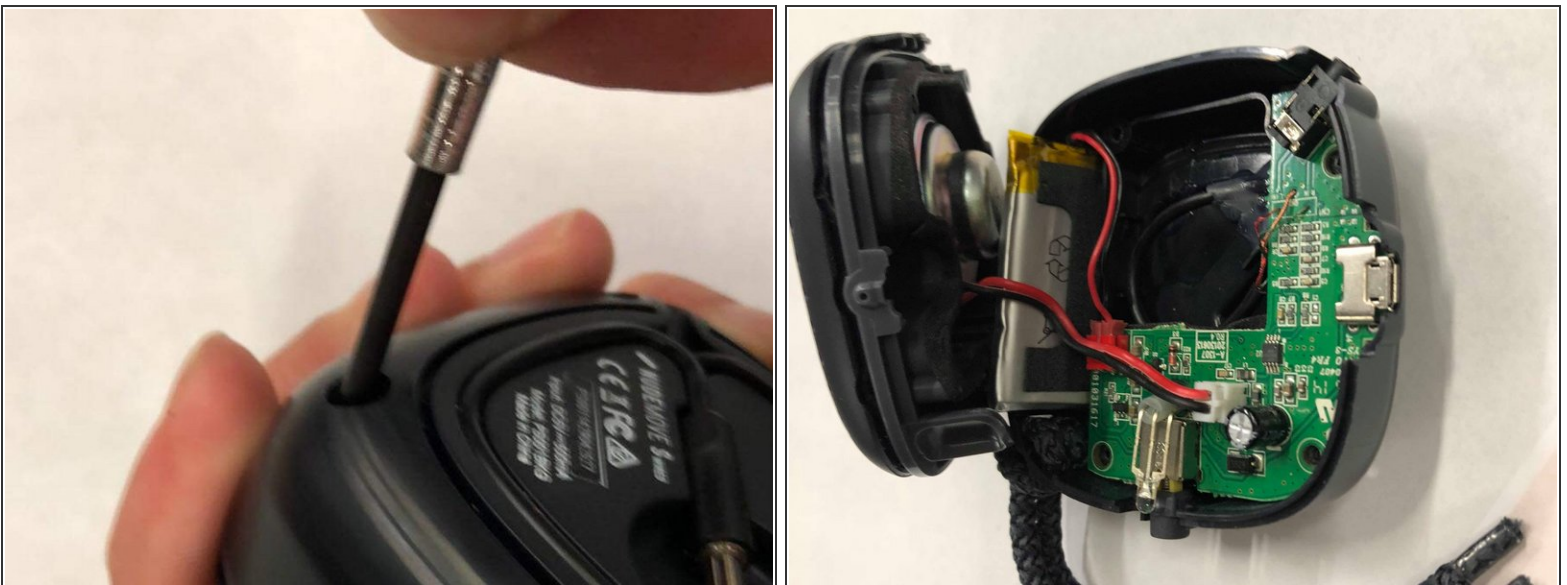
- [Essential Electronics Toolkit](#) (1)
-

Step 1 — Removing rope and rubber cover



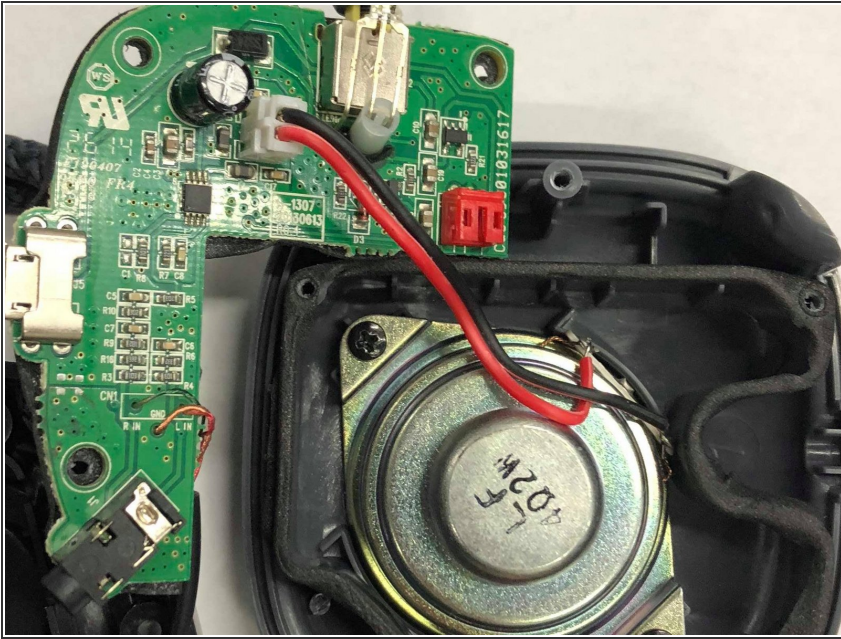
- Insert wisdom here.

Step 2 — Unscrew and open the speaker



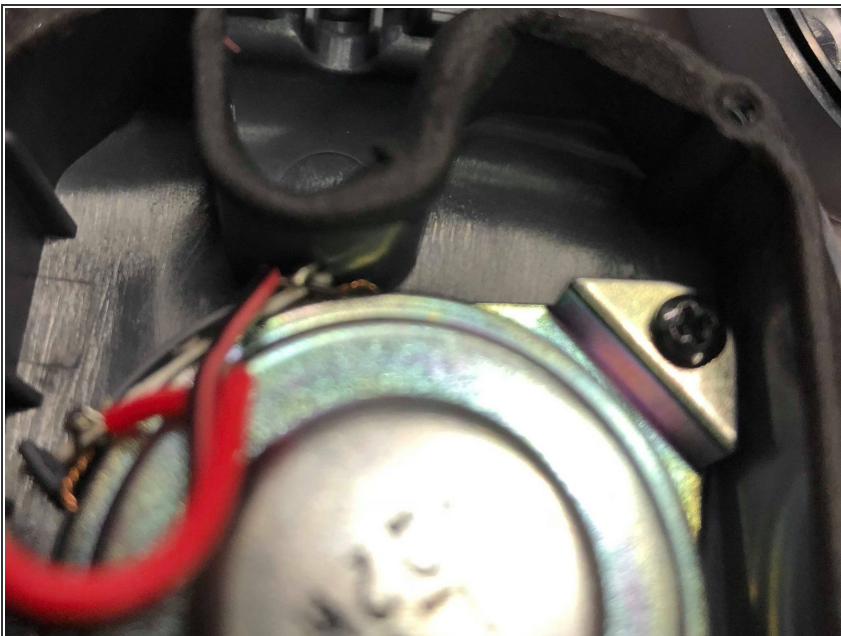
- Be careful about the wires when opening the speaker up.

Step 3 — Unplugging the wires



- Unplug the wires from the driver and battery, be careful as not to pull the wire, instead, pull the plug to avoid breaking the wire.

Step 4 — Unscrewing the driver unit



- Unscrew the 2 screws holding the driver unit to dismantle the driver.

Step 5 — Dismantle the parts



- All of the parts should come loose, congratulations on dismantling the Move S Wired!