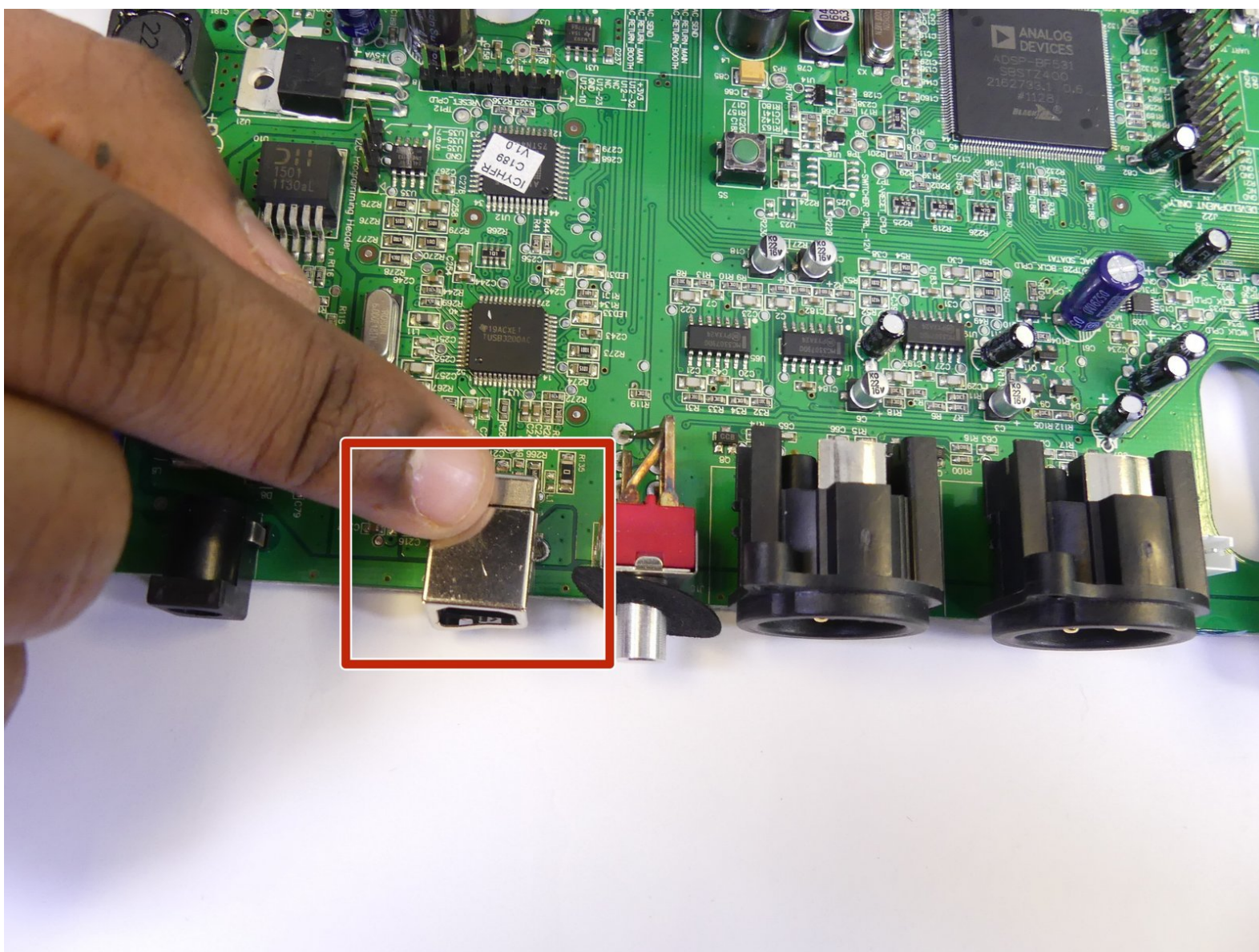




# Numark N4 USB Port Replacement

This is a guide to replace the USB receptacle that is attached directly to a circuit board inside the Numark N4.

Written By: Erik Charlton



## INTRODUCTION

A faulty USB can cause a host of different problems. This guide is designed to show the reader how to safely replace the USB outlet to restore proper function to your Numark N4 without needing to replace the entire motherboard it is attached to.

Please note that this guide requires soldering. For more information on how to solder and desolder connections, please visit [this guide](#).



### TOOLS:

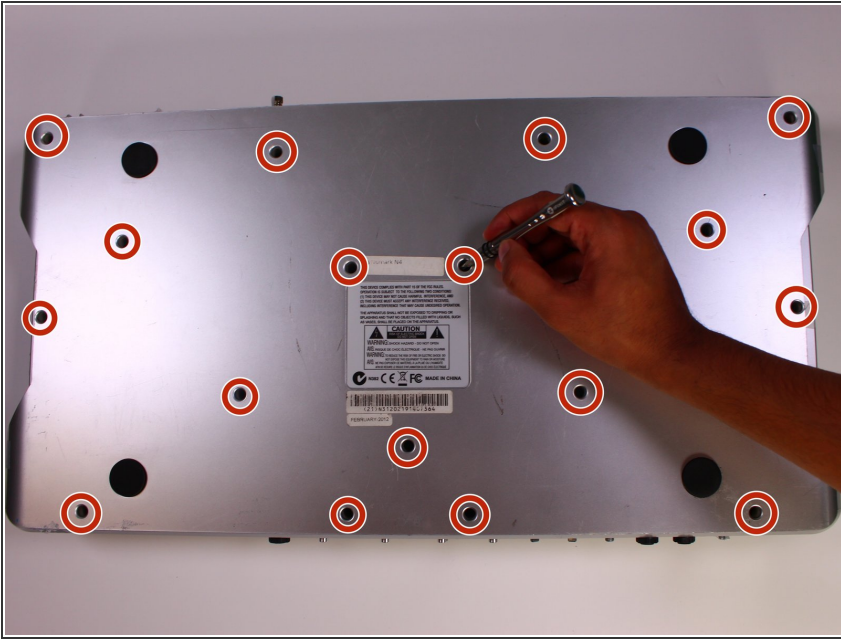
- [Phillips #2 Screwdriver](#) (1)
- [Soldering Workstation](#) (1)



### PARTS:

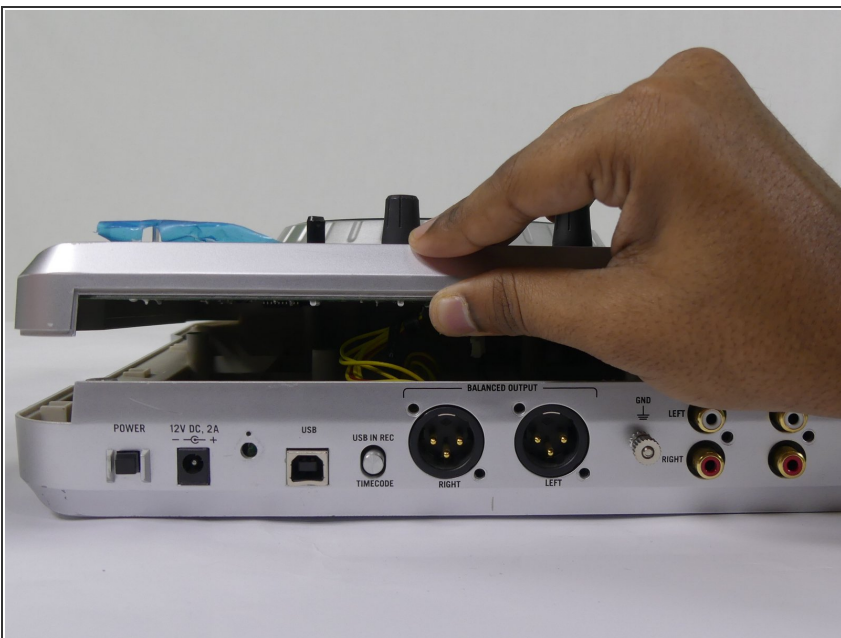
- [Right Angle PCB Mount 4-Pin USB 2.0 Type-B Receptacle](#) (1)

## Step 1 — Numark N4 Disassembly



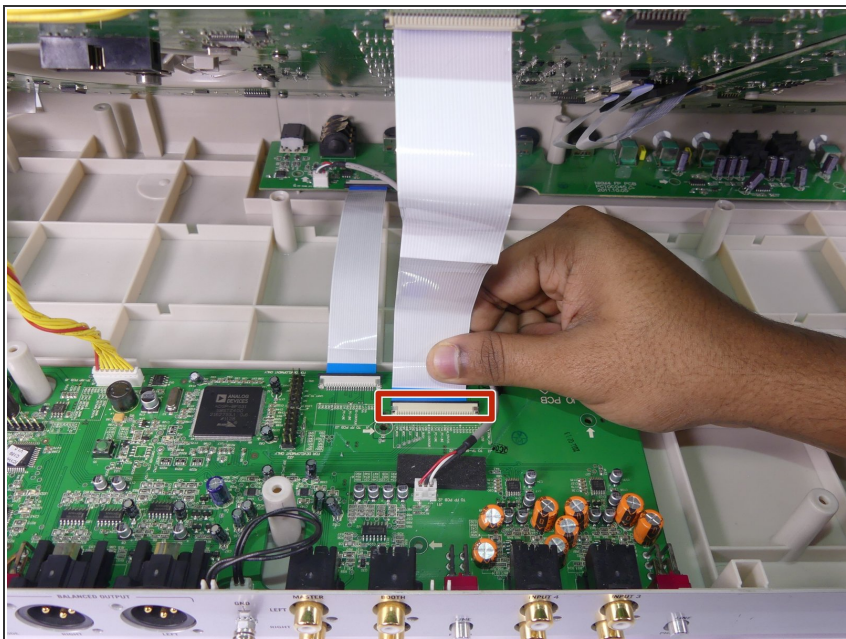
- Turn the Numark N4 over so that the bottom panel is facing upwards.
- Loosen and remove the 17 12mm screws from the bottom panel using a Phillips #2 screwdriver.

## Step 2



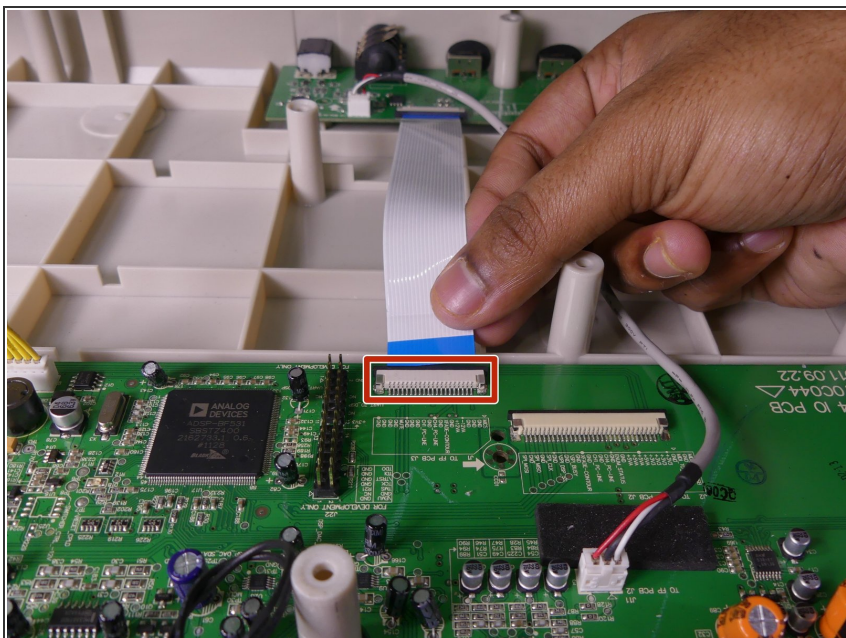
- Using your fingers, gently pull apart the two panels of the device until you feel resistance from the cables.

### Step 3



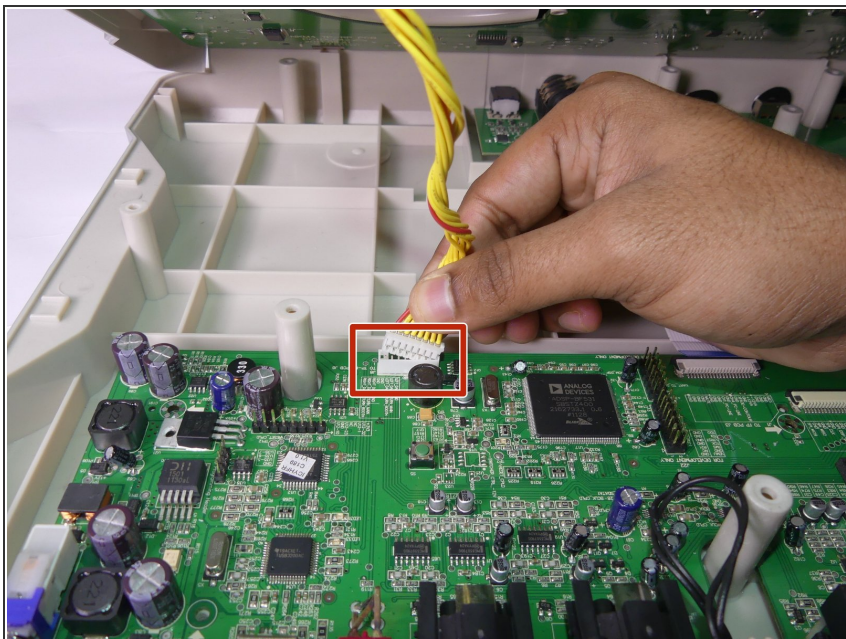
- Using your fingers, gently unplug the larger ribbon cable as pictured.

### Step 4



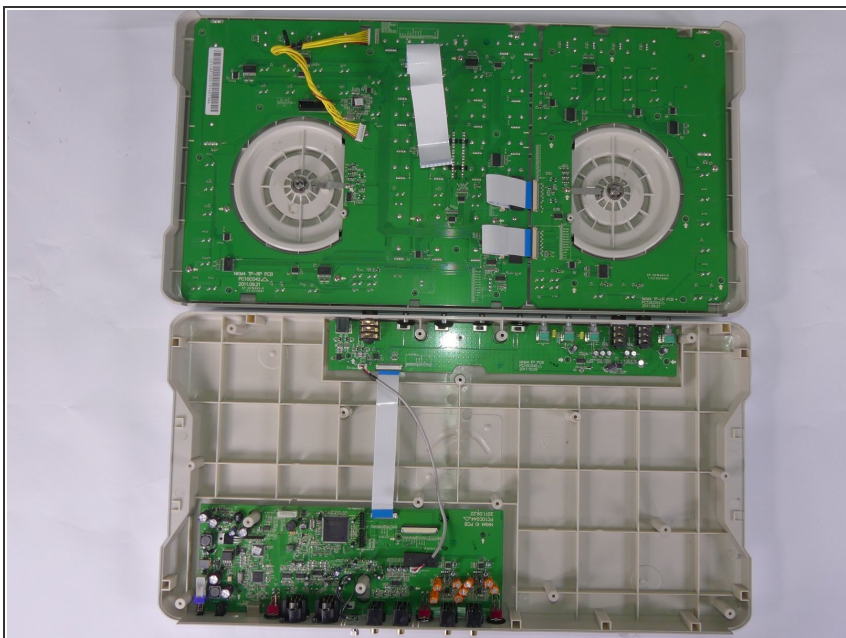
- Using your fingers, gently unplug the smaller ribbon cable as pictured.

## Step 5



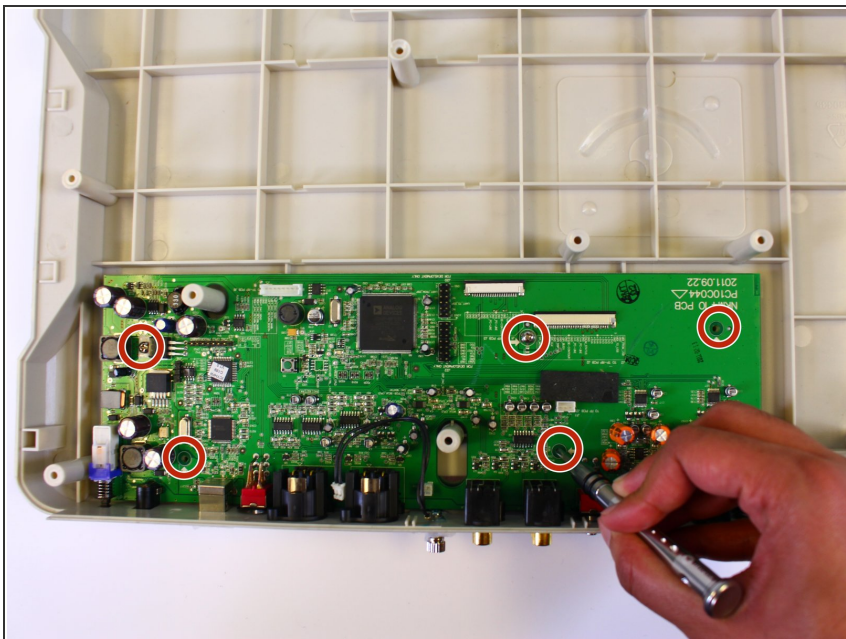
- Using your fingers, gently unplug the yellow and red cable as pictured.

## Step 6



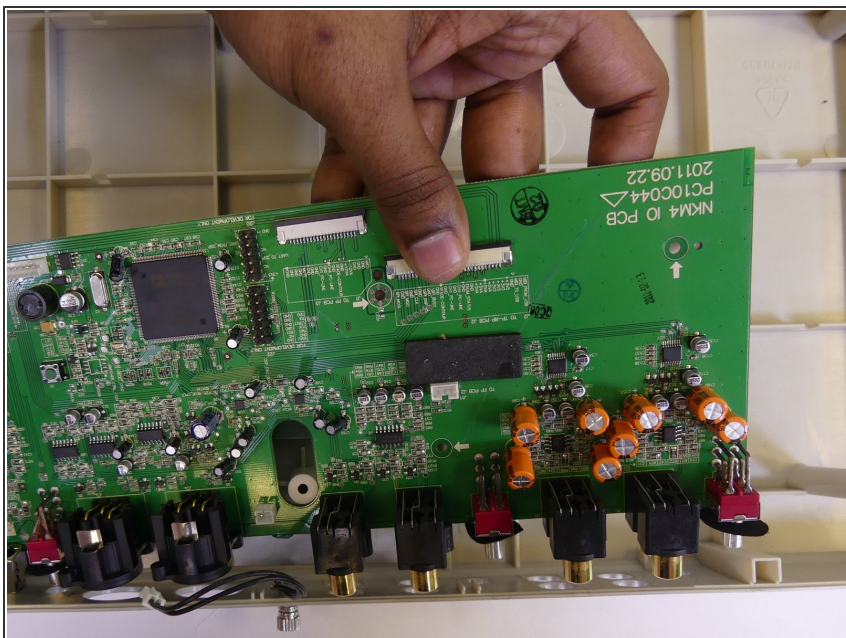
- Open the two panels completely, gently placing each side on your working area to avoid damage to the buttons on the outside face.

## Step 7 — USB Port



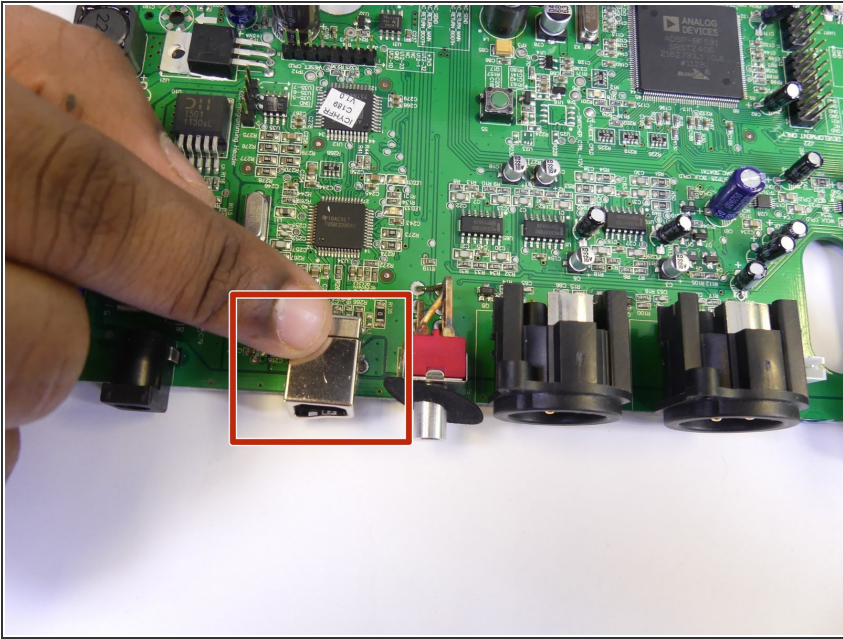
- Loosen and remove the five 12mm screws from the circuit board using a Phillips #2 screwdriver.

## Step 8



- Carefully remove the circuit board from its housing.

## Step 9



- Locate the USB on the circuit board.
- Using a soldering station, carefully desolder the connection points to the USB outlet.
- ⓘ To review soldering safety and techniques, please visit [How To Solder and Desolder Connections](#).

To reassemble your device, follow these instructions in reverse order.