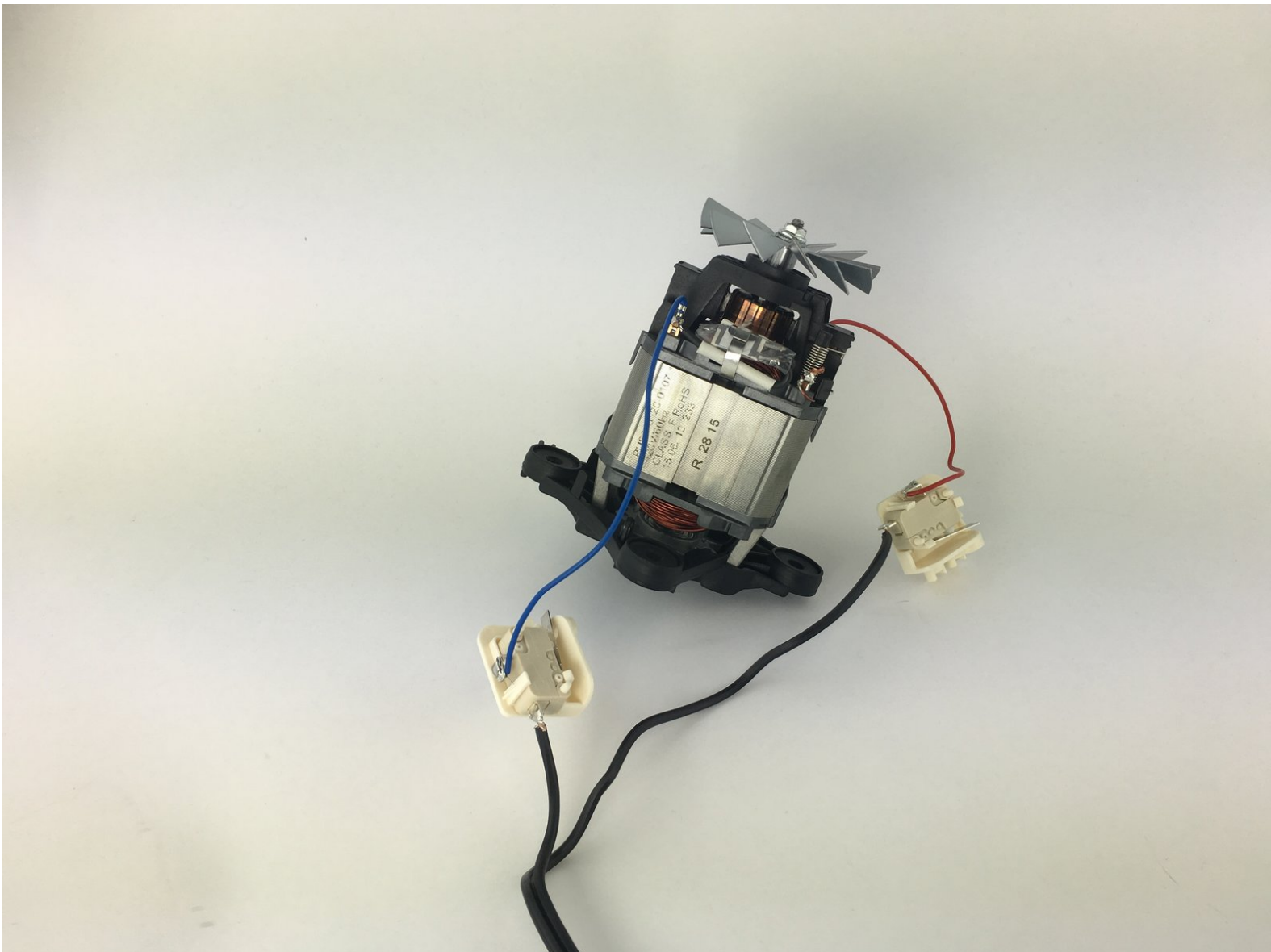




Written By: Morgan Blauth



INTRODUCTION

Using this guide, users will be able to replace the motor of their blender.



TOOLS:

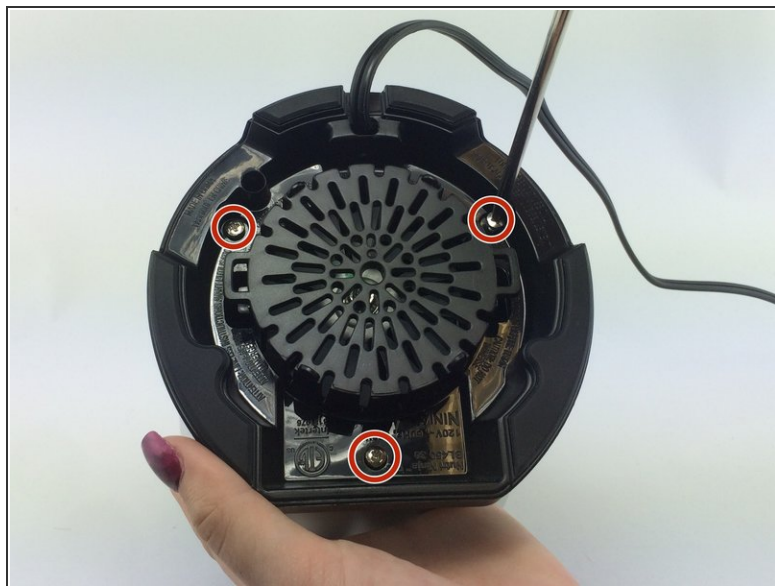
- [Phillips #1 Screwdriver](#) (1)
 - [T9 Torx Screwdriver](#) (1)
-

Step 1 — Small Rubber Wheel



- Remove the cup from the blender base.

Step 2



- Turn the blender over and unscrew the three 14 mm screws holding the slotted base in place. These are Torx Security bits (TR9) on some units.

Step 3



- Using a the standard Phillips head screwdriver bit, remove the slotted black plastic covering and then unscrew the one 11mm screw holding the power cord in place.
- Unscrew the four 14 mm screws that are in the deep slots. This will release the motor from the base.

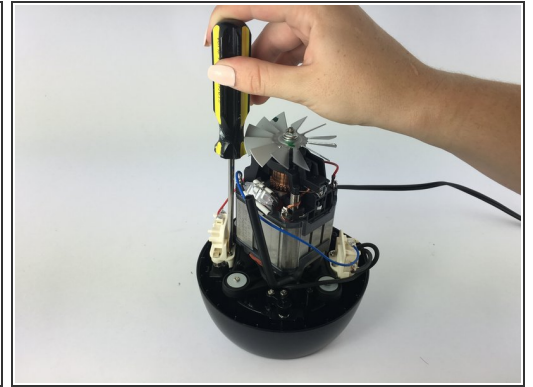
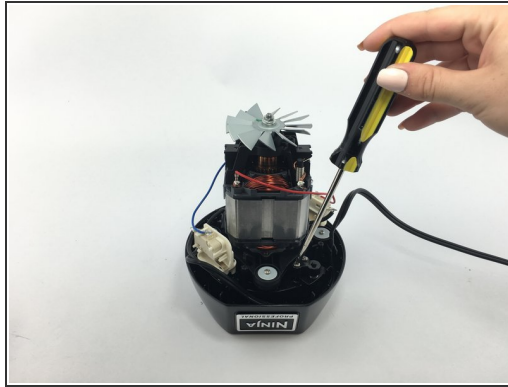
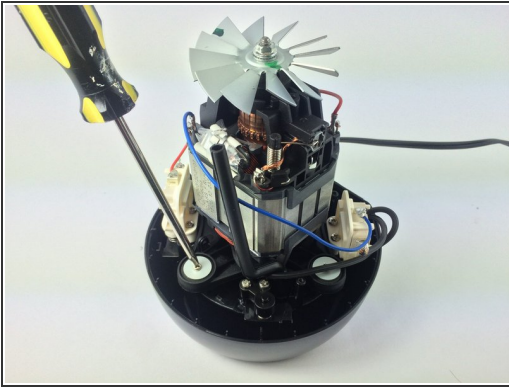
Step 4



⚠ CAUTION: the silver blade attached to the motor is very sharp. Use a towel or thick cloth to protect your hands for the next step.

- Using a towel, hold the silver fan still. Twist the small black rubber wheel that is attached to the top of the blender base to the right. This will remove the wheel for replacement.

Step 5 — Plastic Outer Base



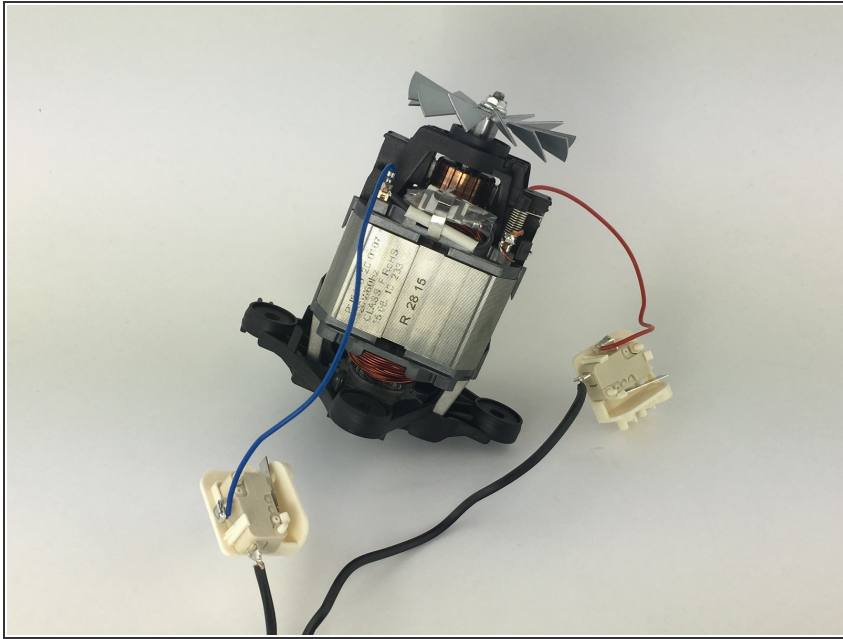
- Use the standard Phillips head screw bit to unscrew the screws in the black plastic with the silver circular discs.
- Using the T9 screw bit, unscrew the four sets of two 11 mm screws located on each of the four sides of the motor.

Step 6



- Untwist the small rubber connector to detach the plastic from the motor.

Step 7 — Motor



- Remove the motor and replace it.

To reassemble your device, follow these instructions in reverse order.