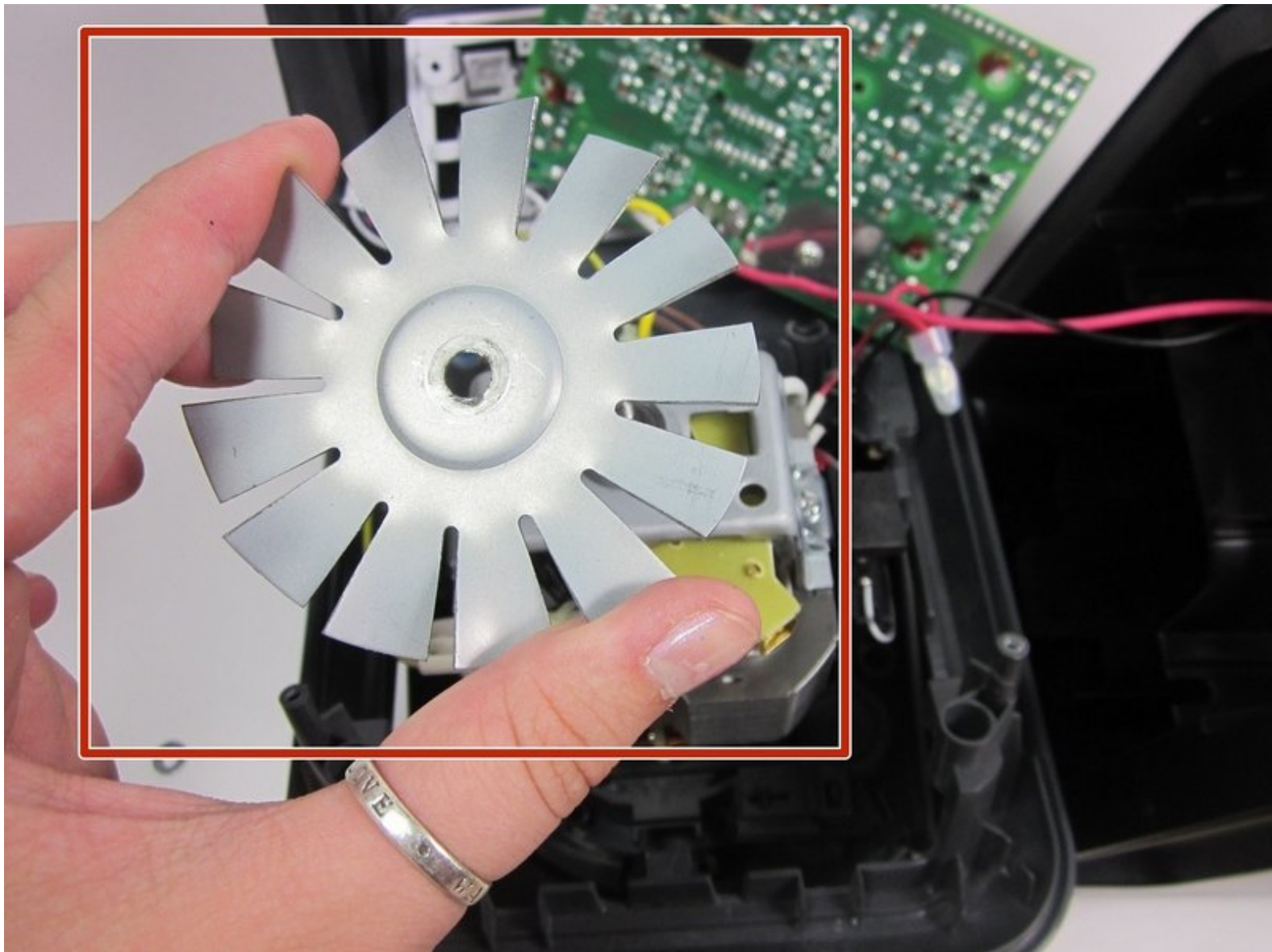




Nutri Ninja Ninja Blender Duo BL641 Fan Replacement

This guide shows you how to replace the fan in the Ninja Duo BL641 blender that can cause overheating or excess noise.

Written By: Nathan



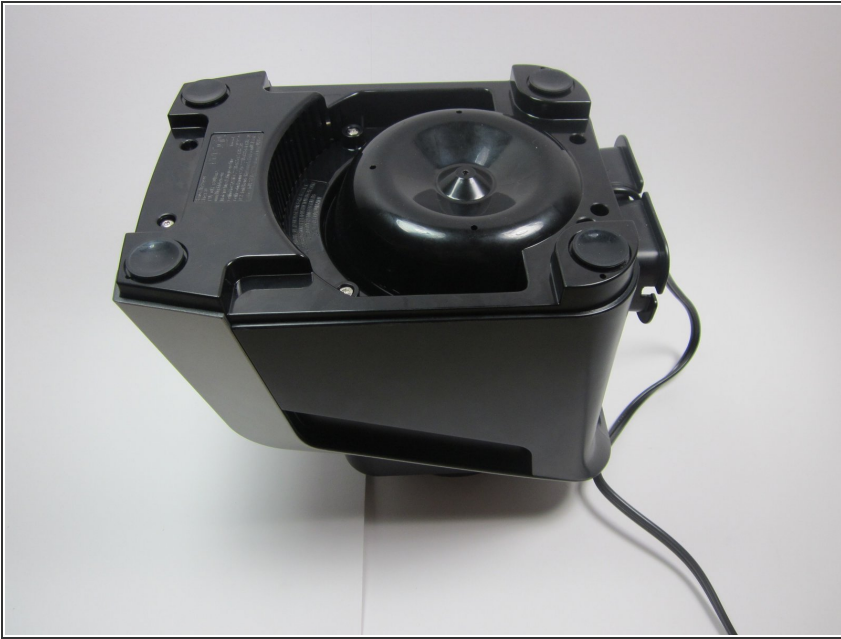
INTRODUCTION

The fan can become warped or broken which can lead to overheating and noise. This is how to replace this main fan.

TOOLS:

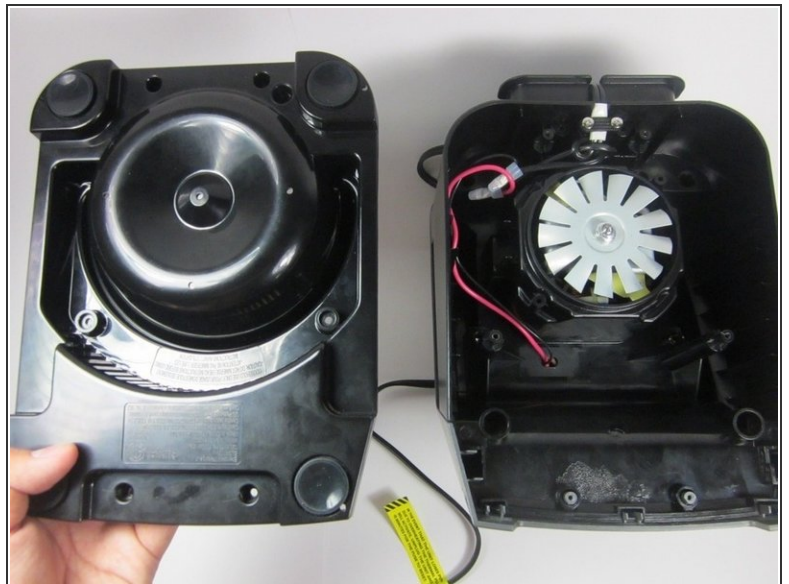
- [Phillips #0 Screwdriver](#) (1)
 - [Star Bit Screwdriver](#) (1)
 - [iFixit Opening Tools](#) (1)
 - [Adjustable Wrench](#) (1)
 - [Large Needle Nose Pliers](#) (1)
-

Step 1 — Nutri Ninja Ninja Blender Duo BL641 Body Disassembly



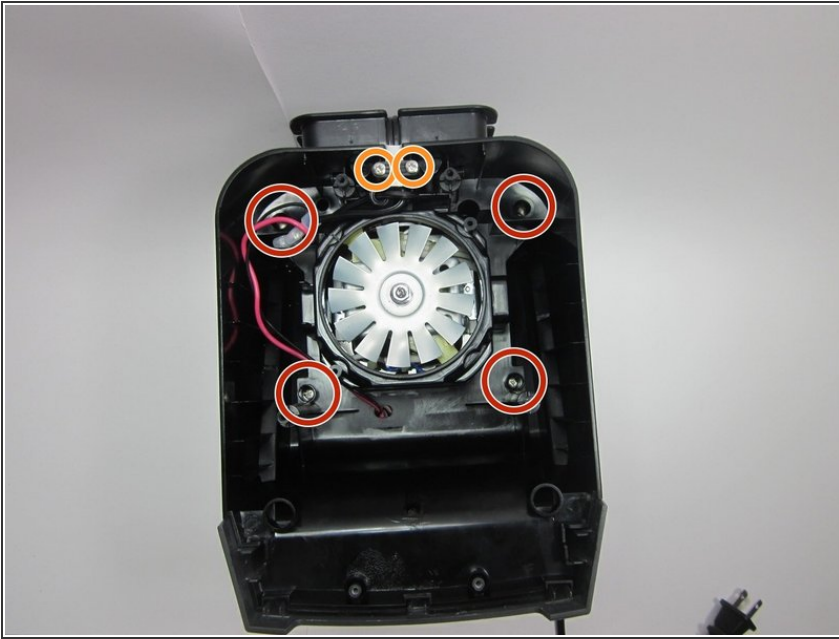
- Turn blender upside down

Step 2



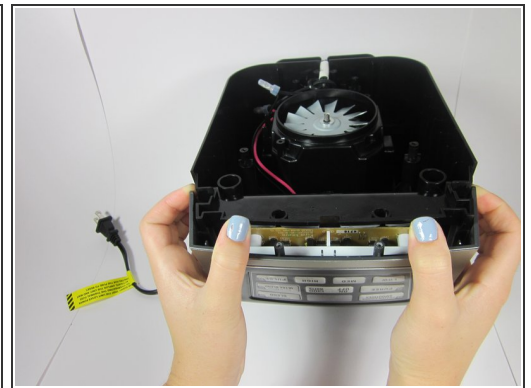
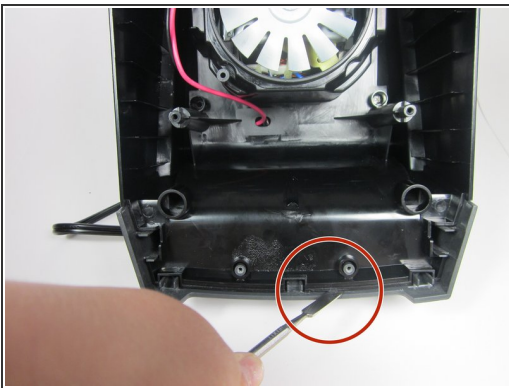
- Remove these six screws (0.5 inch 5 gauge phillip's head)
 - Note: 2 of the screws will be star shaped circled in blue
- Lift the bottom panel off

Step 3



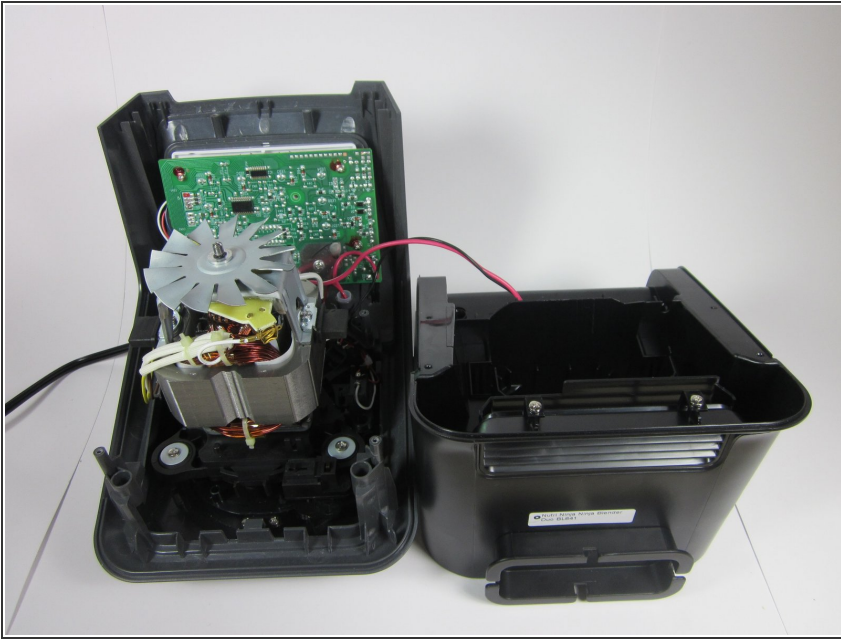
- Unscrew and remove these six phillip's screws. (0.5 inch 5 gauge phillips)
- Note: The screws circled in blue are 1/8" longer and have a slightly different top than the rest. These are the only two screws that are different than the rest.

Step 4



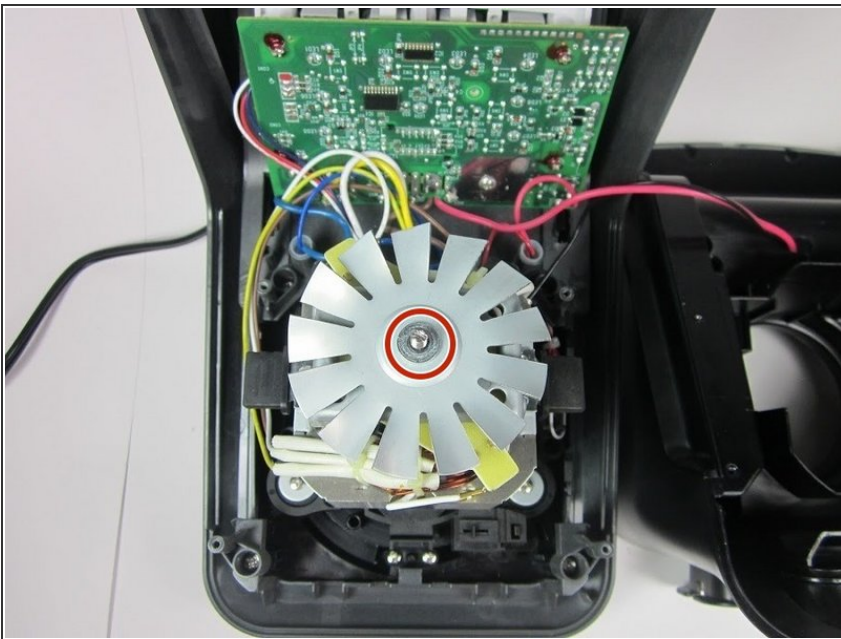
- Insert pry tool in between the two plastic pieces to separate them
- Move pry tool back and forth from right to left until the two pieces begin to separate as shown.
- Pry the two pieces apart with your hands as shown in the picture to finish separating the pieces.

Step 5



- This completes the disassembly of the main body of the blender so you can continue to perform replacements on the internal parts.

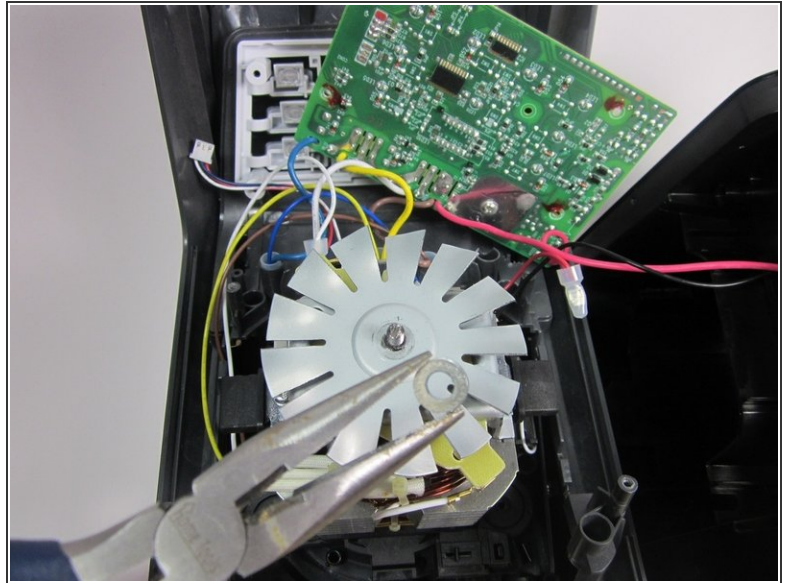
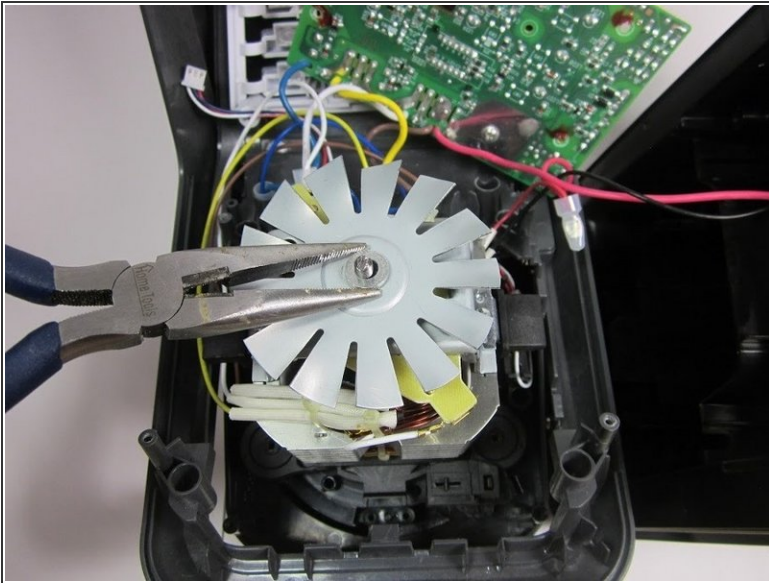
Step 6 — Fan



- Remove this hex nut with the adjustable wrench.
- Be sure to hold the fan still GENTLY while unscrewing the nut so the bolt does not spin with the nut.

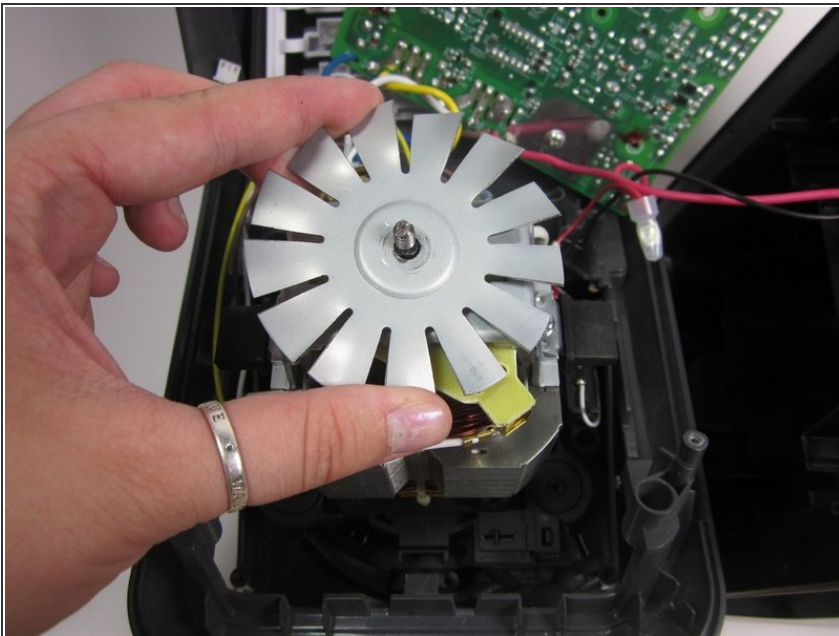
⚠ Fan may be a little sharp

Step 7



- Grab the washer with pliers and twist/pull it off of the threaded rod.
- ❗ The washer is not threaded but has rubbery glue holding it to the threaded rod. This is why unscrewing as well as pulling is necessary.

Step 8



- Grab the fan gently and pull it off

To reassemble your device, follow these instructions in reverse order along with the body disassembly guide.