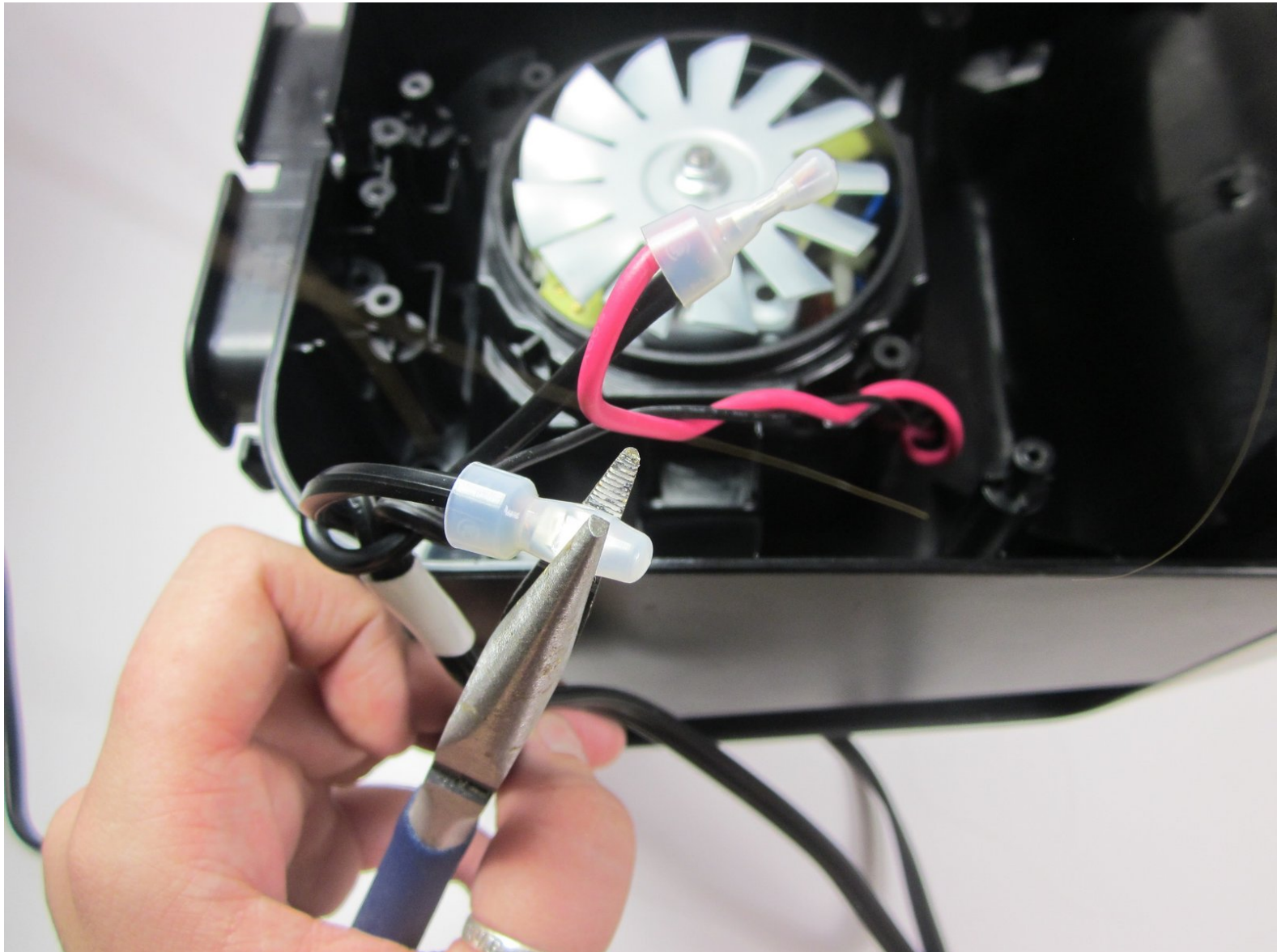




# Nutri Ninja Ninja Blender Duo BL641 Power Cord Replacement

Guide on how to replace the power cord.

Written By: Allie Decker



## INTRODUCTION

Power cords can be damaged over time due to various causes. This guide will demonstrate how to replace the power cord.



### TOOLS:

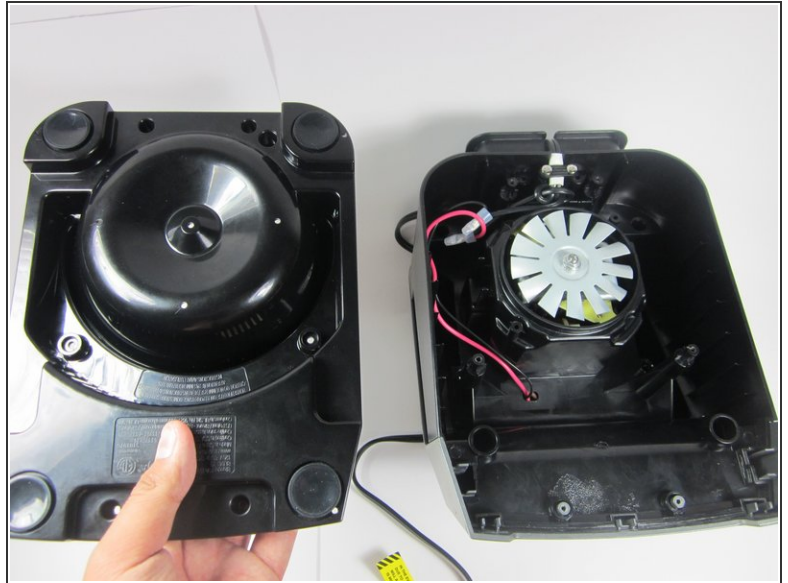
- [Phillips #1 Screwdriver](#) (1)
- [Large Needle Nose Pliers](#) (1)



### PARTS:

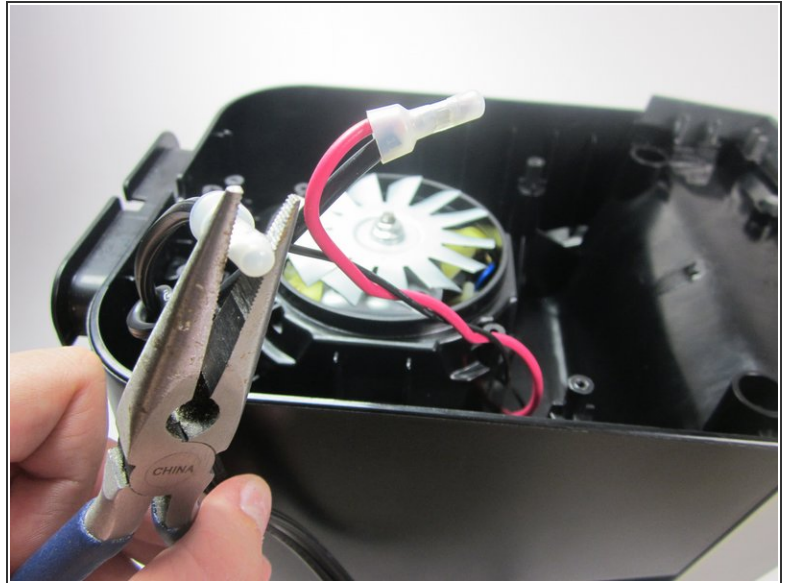
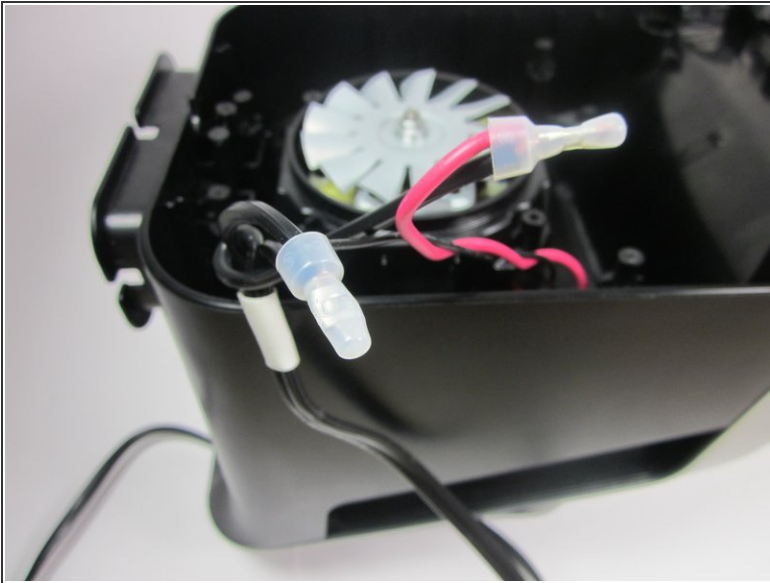
- [Ninja Power Cord](#) (1)

## Step 1 — Power Cord



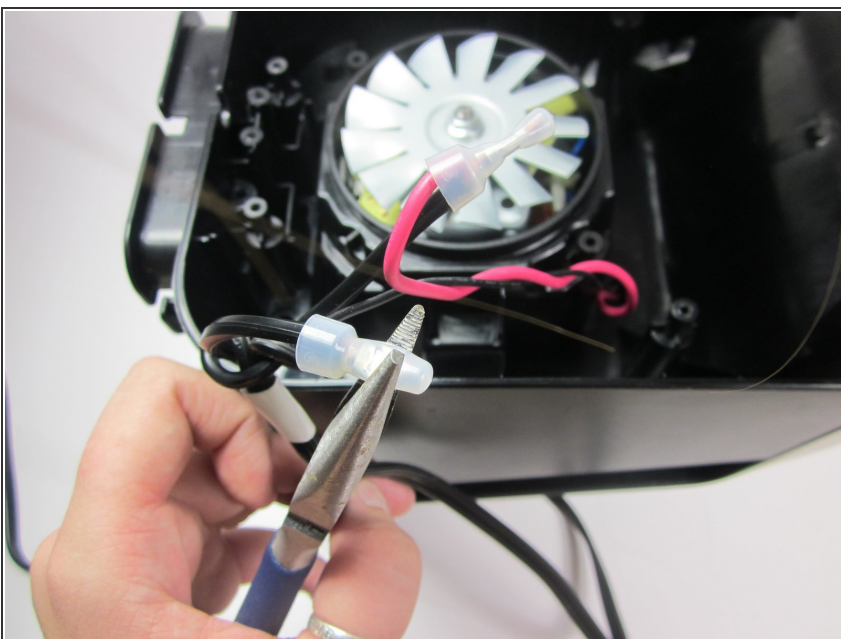
- Unscrew the screws from the base of the blender (These should be 5 gauge phillips head screws).
- 2 of the screws will be star shaped rather than phillips head.
- Remove the base plate.

## Step 2



- Identify the red and black wires topped with white-clear caps.
- Use pliers to squeeze the flattened part of both caps.
- The black and red wires attached to the power cord should be loose and ready to pull out.

## Step 3



- Replace the cord by slipping the new cord's black and red wires into the caps.
- Pinch the middle of the cap back to the flattened position using the pliers.

To reassemble your device, follow these instructions in reverse order.