



Nvidia Shield TV 1st Generation Controller Battery Replacement

This guide shows how to remove the controller battery on the controller paired with the Nvidia Shield TV 1st Generation.

Written By: Joshua Neally



INTRODUCTION

You will need to replace the battery in your controller if it is not holding a charge or your controller is not turning on. When taking apart the controller, be careful as the buttons are not held in place by anything and can easily fall out.

TOOLS:

- [T6 Torx Screwdriver](#) (1)
 - [iFixit Opening Tools](#) (1)
 - [Tweezers](#) (1)
-

Step 1 — Controller Battery



- Remove the indicated six screws using the T6 Torx screwdriver.

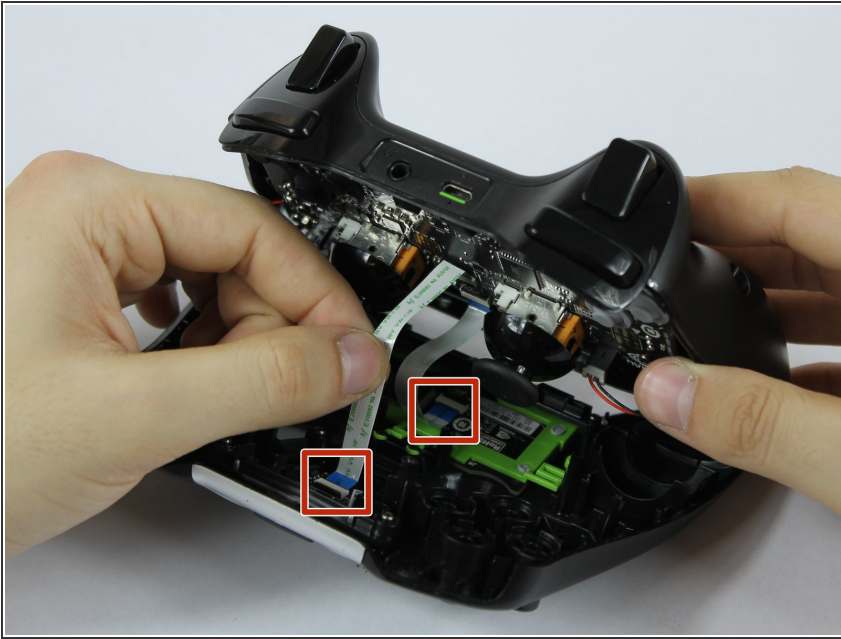
Step 2



- Use the plastic opening tool to pry the face of the controller away from the body.

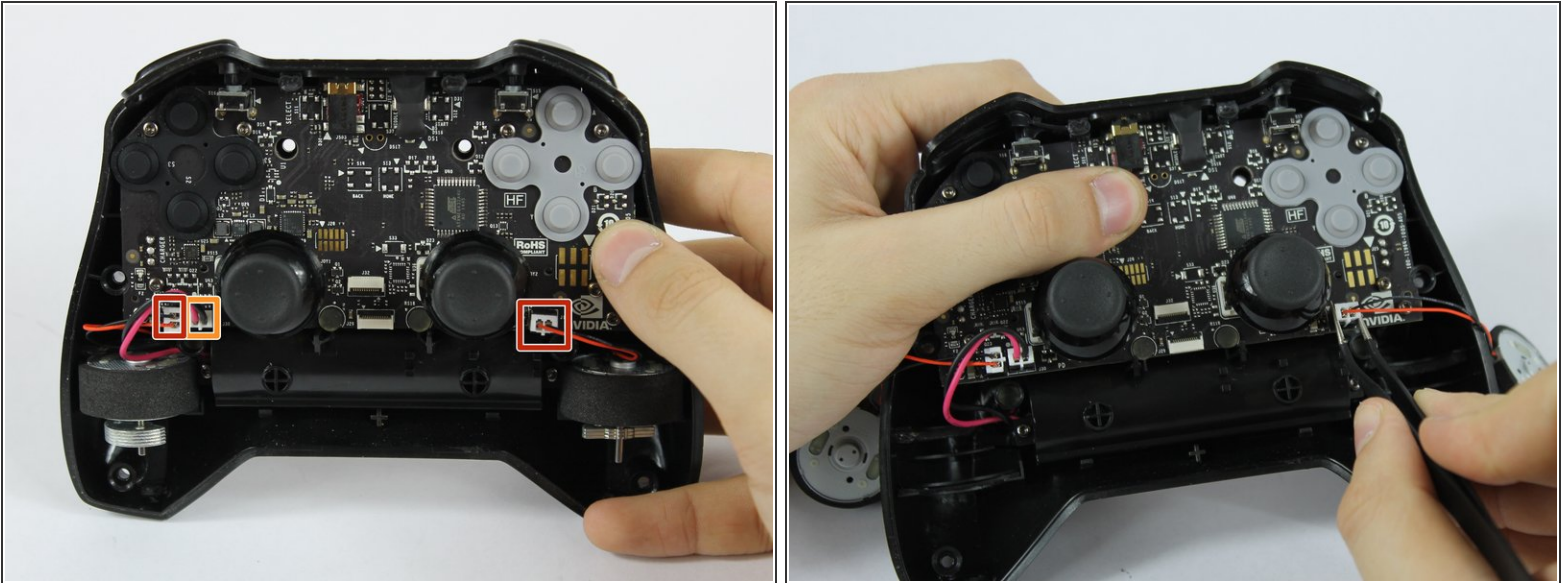
⚠ Make sure the controller is face down during this step as the buttons can easily fall out.

Step 3



- Carefully remove the indicated ribbon wires from the face of the controller.

Step 4



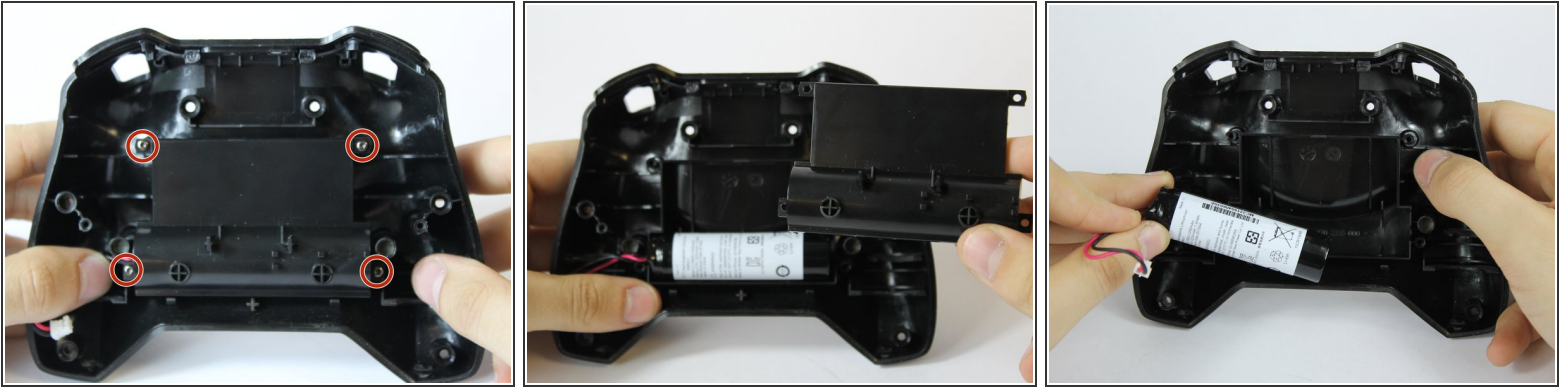
- Use the angled tweezers to remove the vibration motor cable, moving it upward from its socket.
 - Lift the vibration motor out of the front case.
 - Repeat for the other side.
- Use the angled tweezers to remove the battery cable, moving it upward from its socket.

Step 5



- Using the T6 Torx screwdriver, remove the indicated eight screws from the logic board.
- Lift the logic board away from the front case.

Step 6



- Using the T6 Torx screwdriver, remove the indicated four screws from the panel.
- Remove the panel from the front case.
- Lift the battery from the front case to remove it.

To reassemble your device, follow these instructions in reverse order.