



# Nvidia Shield TV 1st Generation Hard Drive Replacement

This guide shows how to reach the hard drive in the Shield device and how to replace it.

Written By: Joshua Neally



## INTRODUCTION

The hard drive can be replaced if the user wants to upgrade with a hard drive with more memory. It will also need to be replaced if the memory in the current hard drive becomes corrupted.

---

### TOOLS:

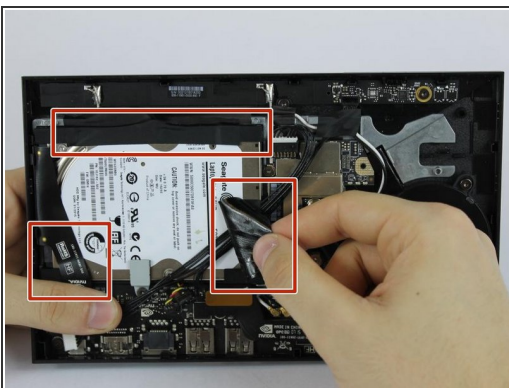
- [iFixit Opening Tools](#) (1)
  - [T6 Torx Screwdriver](#) (1)
-

## Step 1 — Hard Drive



- Flip the device over and use a plastic opening tool to remove the bottom cover.

## Step 2



- Remove the tape that is covering the hard drive.
- ⓘ Place tape aside in a safe place so it can be reused to secure the hard drive when reassembling.

## Step 3



- Remove the indicated screw using the T6 Torx Screwdriver.

## Step 4



- Gently pull out the hard drive.
- Remove the connector pins from the hard drive.

To reassemble your device, follow these instructions in reverse order.