



Nvidia Shield Tablet Front and Rear Camera Replacement

This guide will show the steps to replace the front-facing and back-facing camera of your Nvidia Shield Tablet.

Written By: Molly Bauer



INTRODUCTION

A camera lens on any device is naturally exposed to the elements of nature to obtain the clearest photo; however, this leaves the lens susceptible to damage and cracking. Cameras are used extremely frequently, especially on a device as portable as the Nvidia Shield Tablet. Follow this guide to replace both cameras on your tablet.

TOOLS:

- [Anti-Static Wrist Strap](#) (1)
 - [Spudger](#) (1)
 - [Precision Tweezers Set](#) (1)
 - [Phillips #00 Screwdriver](#) (1)
 - [iFixit Opening Tools](#) (1)
-

Step 1 — Rear Case




- First, remove the stylus from your tablet.

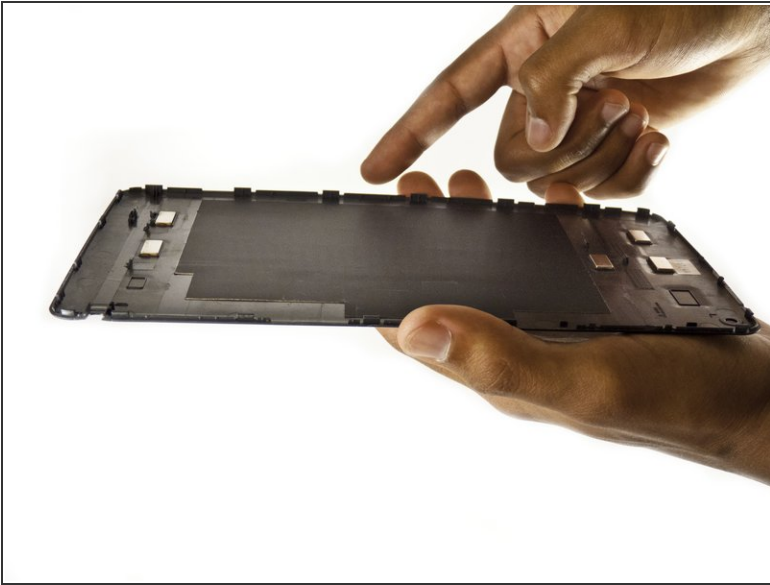
Step 2



- Set the tablet so the buttons, microSD, and stylus port are facing you.
- Open the microSD slot.
- Using the flat end of the spudger tool, carefully pry open the case starting from the microSD slot, slowly sliding the spudger along the inside edge of the case.

 You may want to put on your anti-static wrist strap at this point as the motherboard will be vulnerable to physical touch and electrostatic shock after the casing is removed.

Step 3



- As you remove your case, be aware of small clips along the edges.
- Finally, set the old casing aside.

Step 4 — Speaker



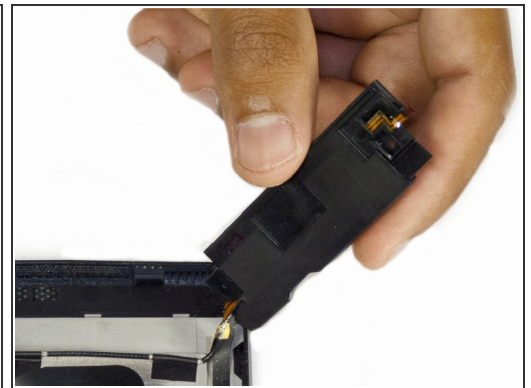
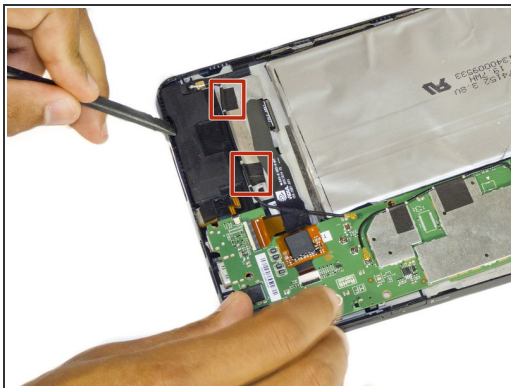
- Orient your tablet so that the top of the tablet is furthest away from you.
- Locate the top speaker, a black semi-rectangular piece on the top right side of the tablet.

Step 5



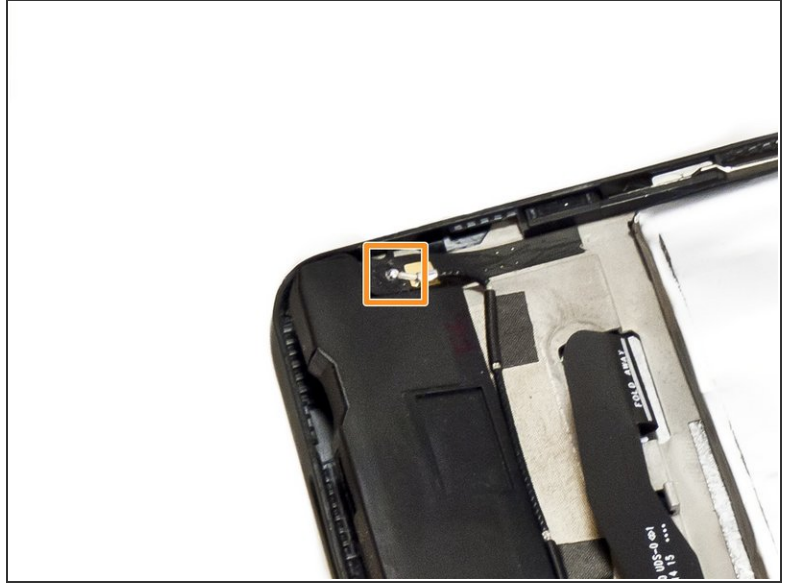
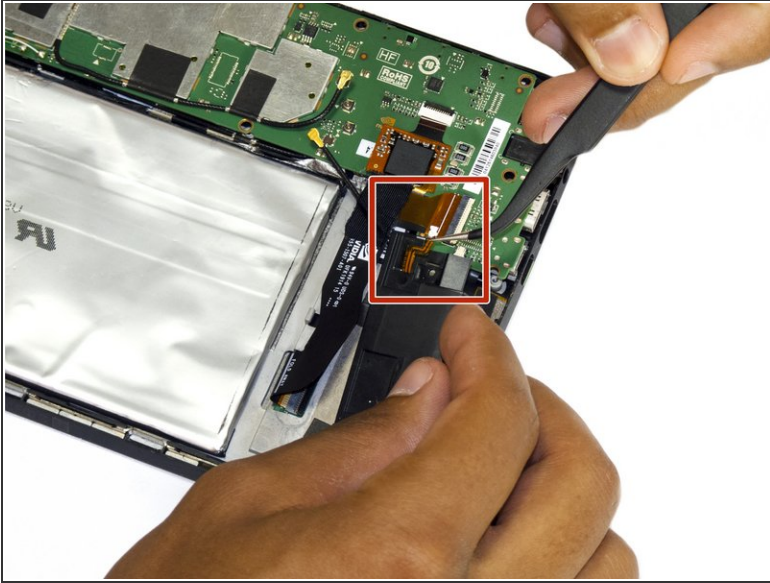
- Remove the two 3.0 mm Phillips #00 screws securing the speaker.

Step 6



- Gently pry the speaker up with the flat end of a spudger.
- Use a plastic opening tool to peel up the tape covering the speaker wire.

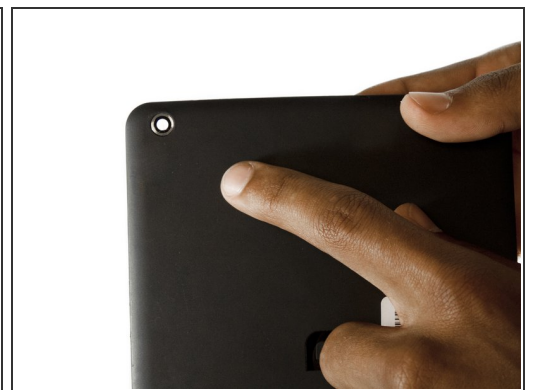
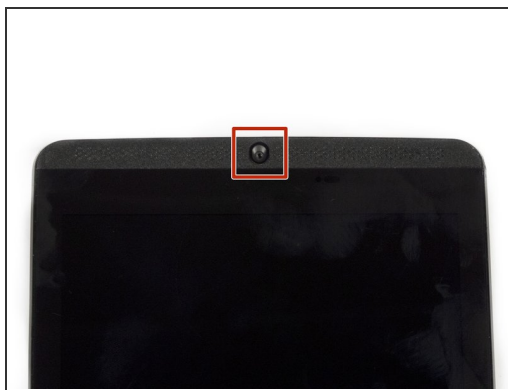
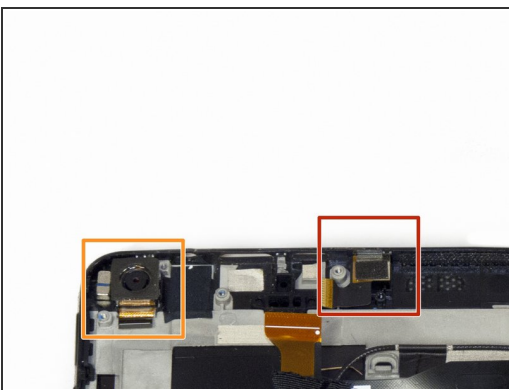
Step 7



- Next, with a gentle but firm grip, pull the audio input ribbon with the precision tweezers.
- Finally, unplug the power source from your speaker using the precision tweezers.

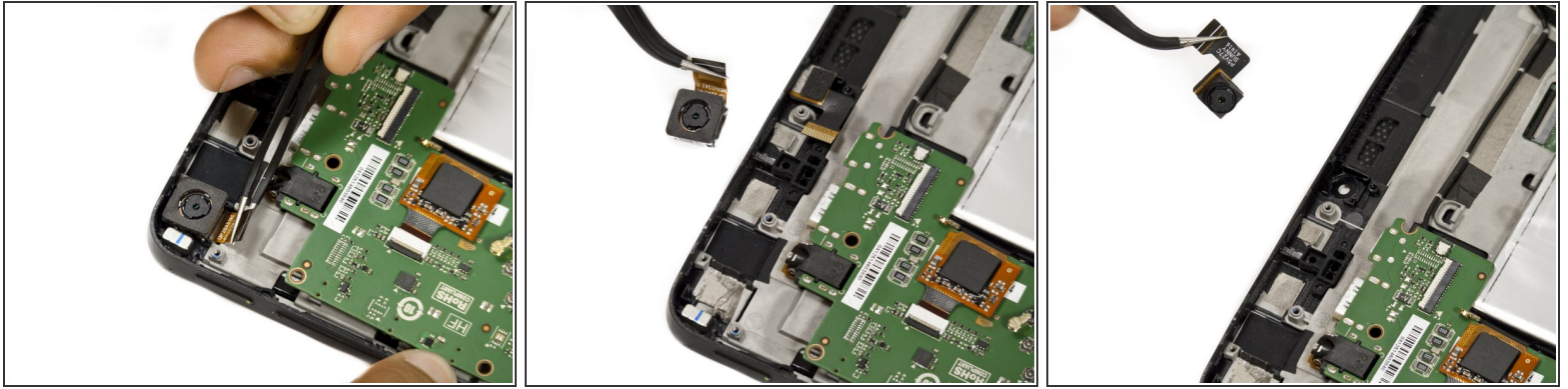
⚠ Make sure you are using your anti-static wrist strap.

Step 8 — Front and Rear Camera



- Having removed the speaker, locate the front-facing camera resting just underneath the speaker.
- The rear-facing camera is on the left side of the tablet and it aligns with the camera hole on the back casing of your tablet.

Step 9



- Gently unplug each camera using the precision tweezers.

To reassemble your device, follow these instructions in reverse order.