



# Nvidia Shield Tablet K1 Battery Replacement

This guide illustrates the removal and replacement of the battery.

Written By: James Upchurch



---

## INTRODUCTION

Once uncovered, you can see that the battery takes up the most real-estate inside of the device. The battery is very securely glued in so you will need to be forceful but also extremely careful when removing it.



### TOOLS:

- [iFixit Opening Tools](#) (1)
  - [Soldering Iron](#) (1)
-

## Step 1 — Back Panel



- Starting at the Micro SD Card Slot and using the blue plastic opening tool, begin to maneuver the tool around the edges while applying light pressure to lift the panel upwards.

## Step 2



- ☑ There are clips holding the back panel to the rest of the case. You must apply some force to lift the back panel off.


- Continue lifting up the panel all the way around the edges of the tablet.
- Once all of the panel clips are unfastened, gently remove the back panel.

This document was generated on 2019-09-21 06:21:34 AM (MST).



## Step 3 — Battery



 The battery is heavily glued down so you will need to apply force while also exercising caution to not damage the rest of the device.

- Using the blue plastic opening tool, place the lip of the tool underneath the battery as seen in the photo.

## Step 4



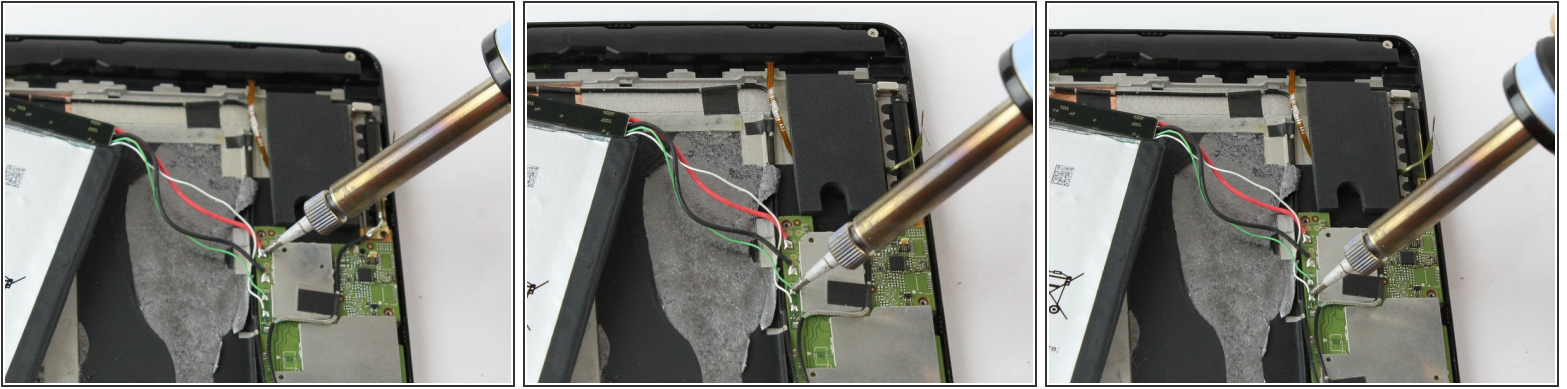
- Once you have the blue plastic opening tool underneath the battery, work the tool around the edges of the battery similar to the technique used for the back panel.

## Step 5



- When the battery seems loose enough, use the blue plastic opening tool to lift the battery from the device.
- ⚠ The battery has four wires connecting it to the device. Be careful not to damage these wires while removing the battery.

## Step 6



- i The wires to the battery are soldered to the motherboard. You may also check the [soldering techniques guide](#) for additional tips on soldering.
- ★ If your device's wiring doesn't exactly match these photos, snap a picture or make a note of what color wire goes to which contact on the motherboard before you detach them. (A mis-wired battery could cause electrical shorts and ruin the tablet for good.)
  - Using a soldering iron, desolder the four wires from the motherboard.
  - Once the wires are free from the motherboard, your battery should be free to remove from your device.

To reassemble your device, follow these instructions in reverse order.