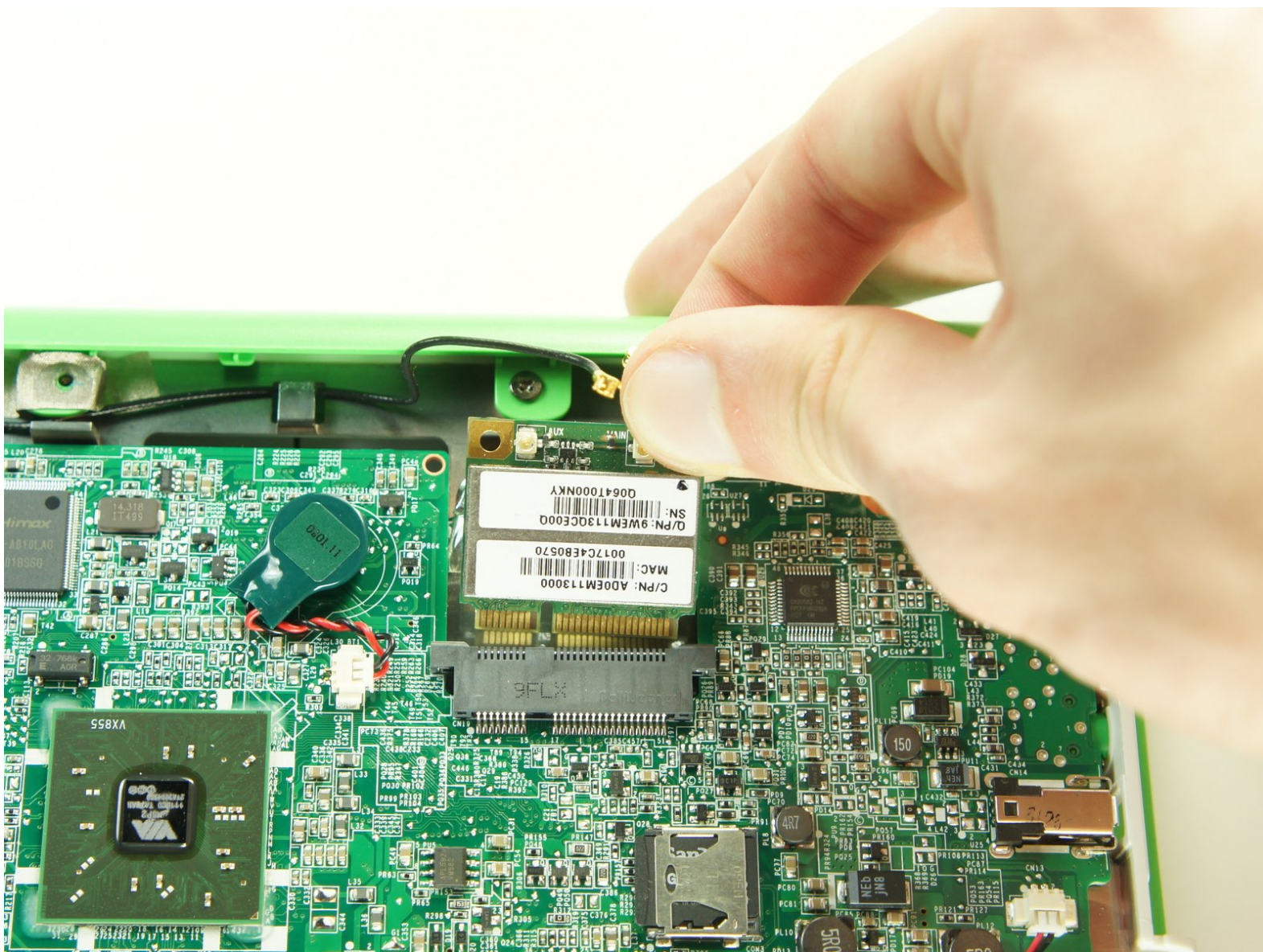




# OLPC XO-1.5 Wireless Card Replacement

This guide will walk the user through the installation of a wireless card onto the OLPC XO-1.5.

Written By: Wei Xia



---

## INTRODUCTION

This guide will show you how to access the wireless card in the OLPC XO 1.5. The wireless card allows access to the internet and interaction with other OLPCs.

---



### TOOLS:

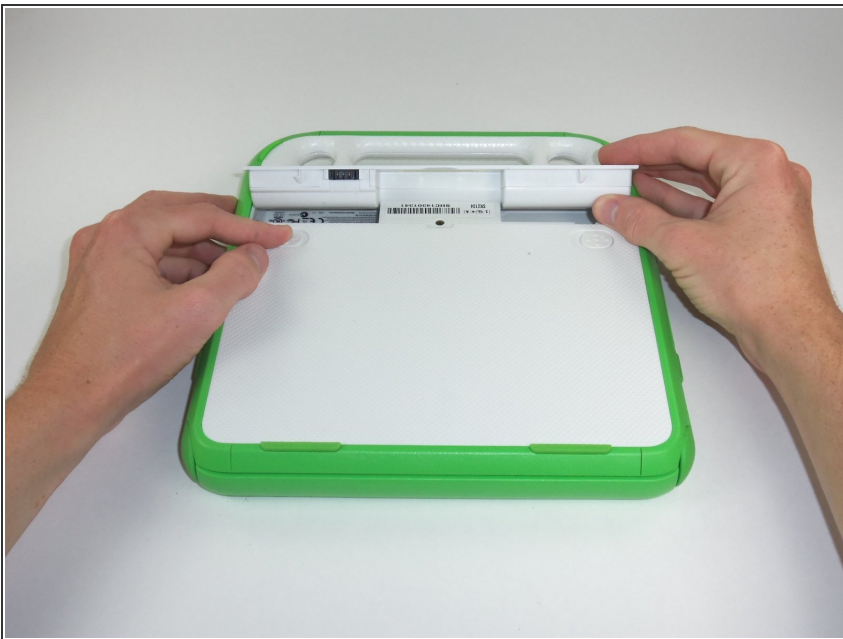
- [Phillips #0 Screwdriver](#) (1)
-

## Step 1 — Battery



- Place the laptop upside down with the handle away from you.

## Step 2



- Slide the tabs out, towards the green edges, to show the open lock symbol.
- ⓘ The right tab will stay in place, but the left tab must be held in position while you remove the battery.



## Step 3



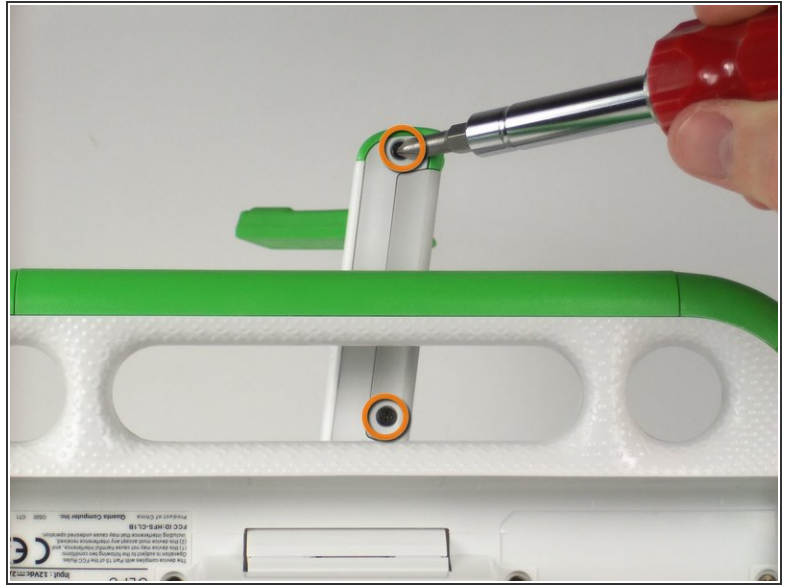
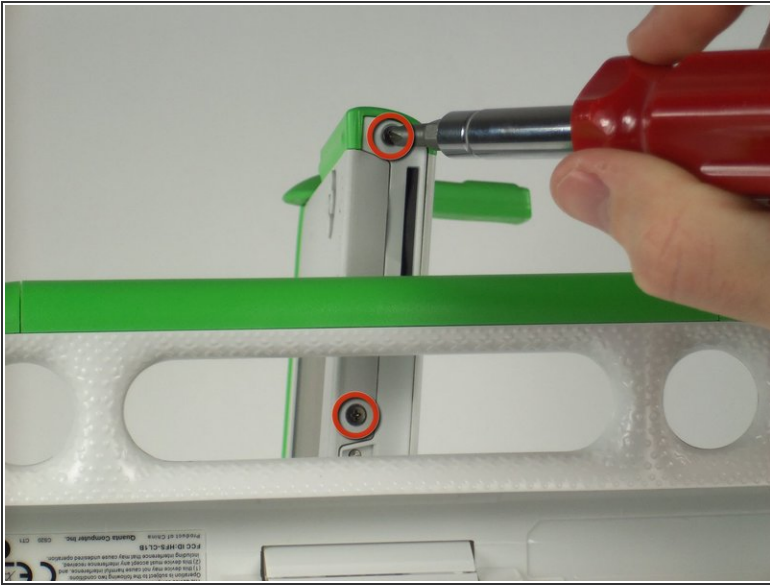
- Lift the middle of the battery to remove it.

## Step 4 — Screen



- Turn the laptop so it is resting on its bottom.
- Open the laptop by rotating the green wings on the side up, then lifting the top half of the laptop.
- Rotate the top half of the laptop about 90 degrees.

## Step 5



- Turn the laptop upside down, so you can see the screws on the bottom of the top half.
- Remove the two 4mm screws with a Phillips #1 screwdriver.
- Rotate the top half 180 degrees.
- Remove the two 4mm screws with a Phillips #1 screwdriver.

## Step 6



- Rotate the top of the laptop 90 degrees, so that it is facing you again.
- Slide the green pieces off the device. They should come off easily.

## Step 7



- Pull down on the white screen cover. It does not require much force.
- Remove the screen cover.
- ⓘ The game pad on the left sometimes falls during this step.

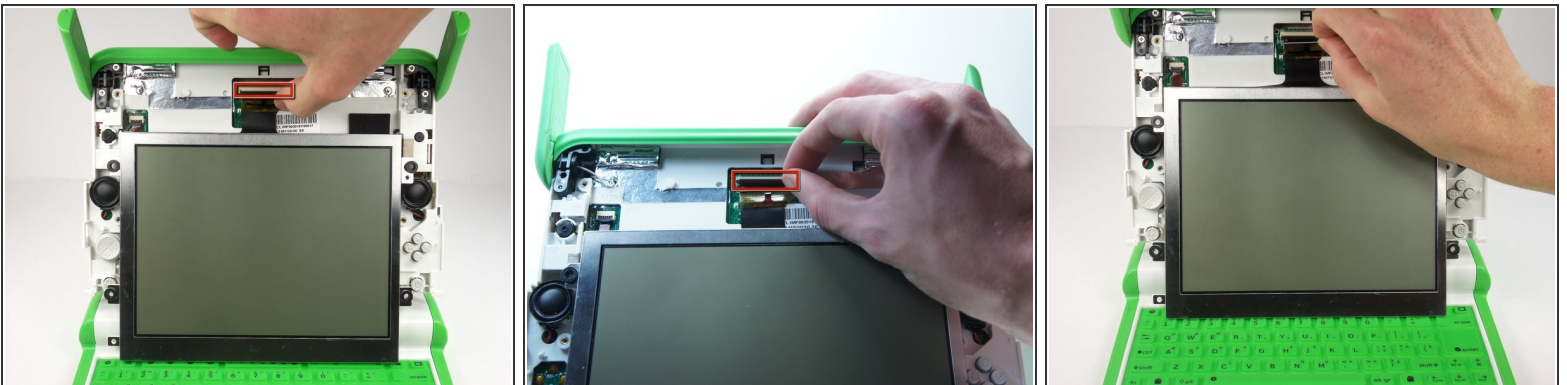


## Step 8



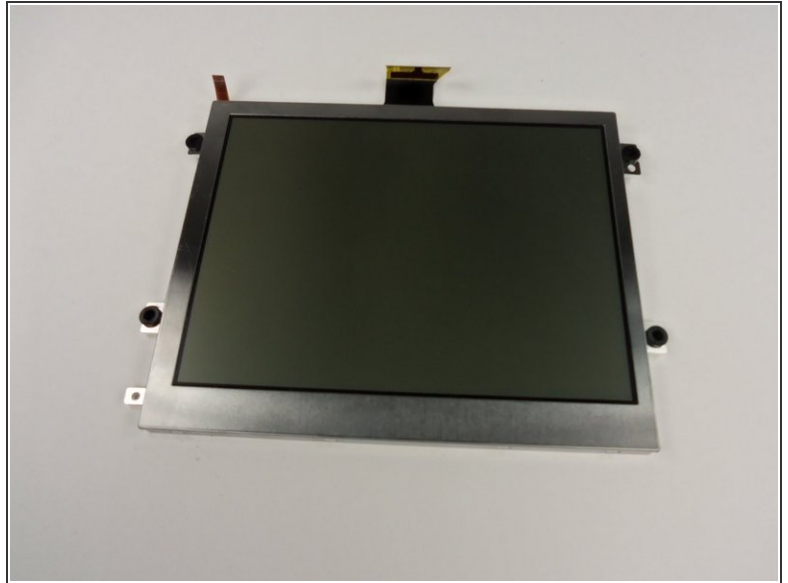
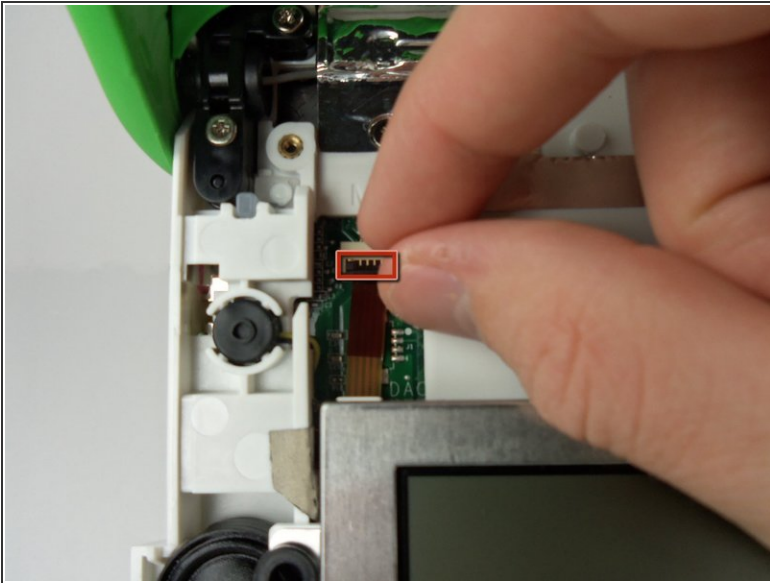
- Unscrew the four 7.62mm Phillips #1 screws on either side of the screen.
- ⚠ The screen is still connected by ribbon cables. You can damage the cables if you remove the screen before disconnecting the cables.
- Move the screen down a little to expose the ribbon cables.

## Step 9



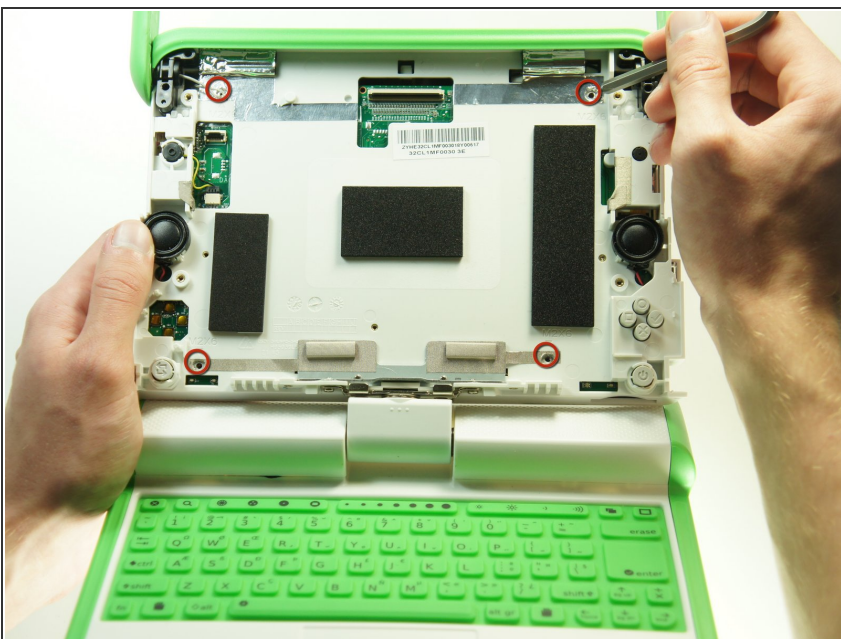
- Flip up the tab right under the middle top of the screen.
- Pull the black ribbon cable out of the socket.

## Step 10



- Flip up the smaller tab under the left side of the screen.
- Remove the small cable to separate the screen from the rest of the laptop.
- Gently remove the screen.

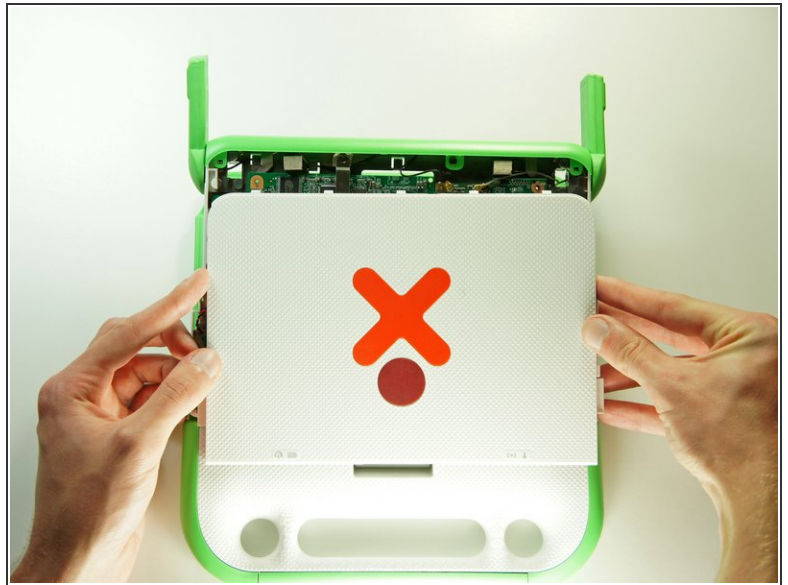
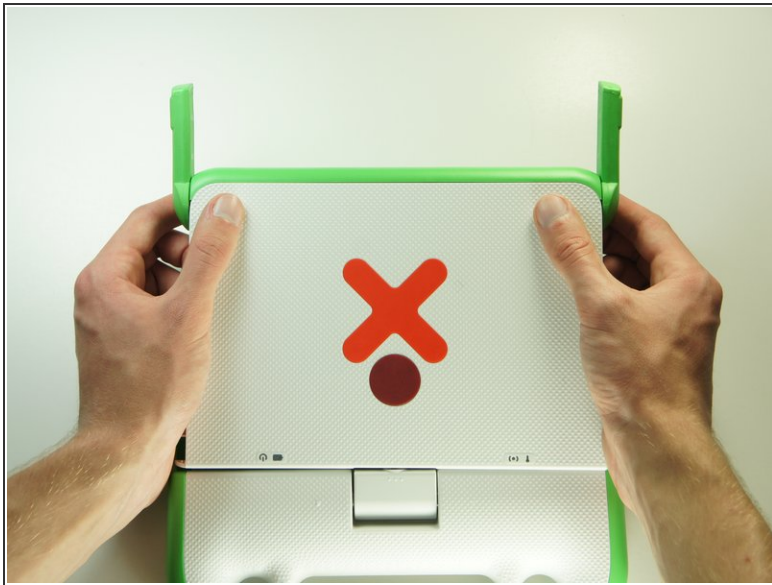
## Step 11 — Wireless Card



- Remove the four 4mm Phillips #1 screws that hold the top cover to the case.



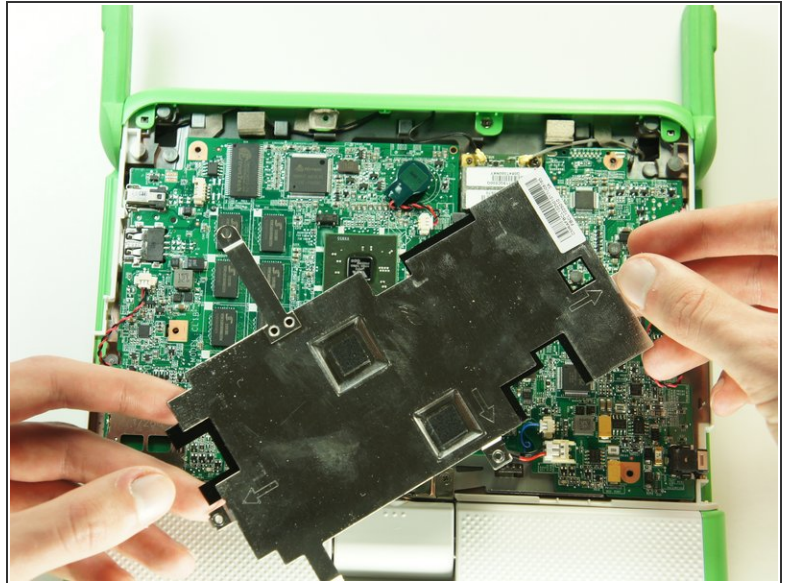
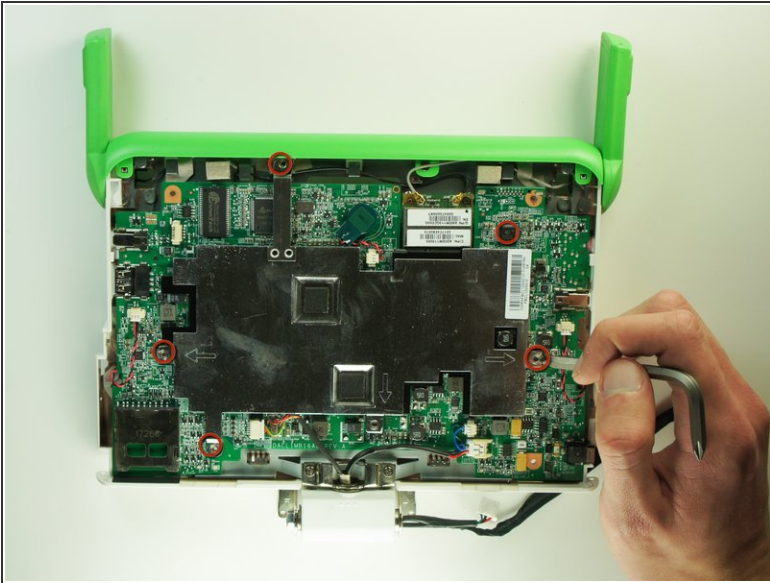
## Step 12



**i** Close the lid and rotate the device 180°.

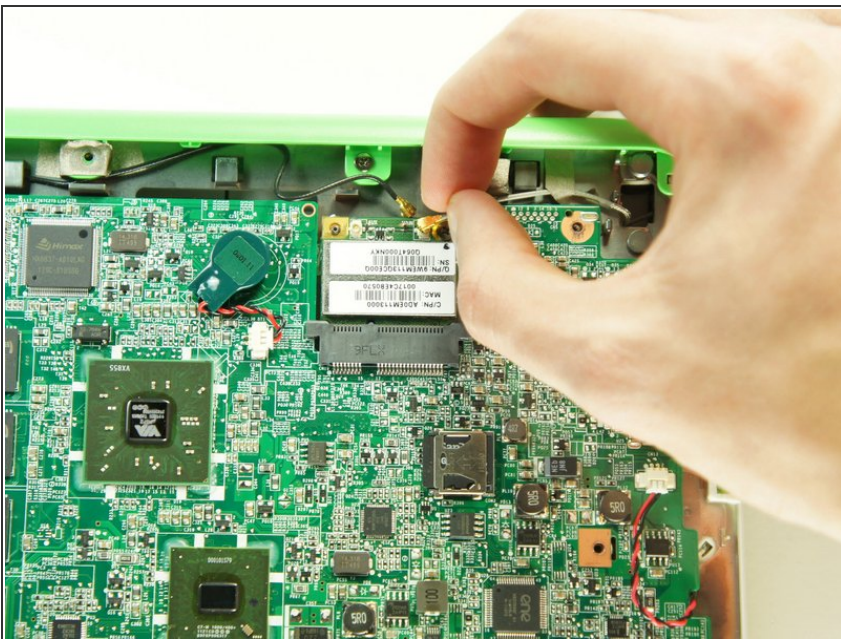
- Press firmly on the top two corners of the outside cover. Then slide it down, away from the antennas.

## Step 13



- Remove the five 4mm Phillips #1 screws securing the EMI shield to the motherboard.
- Gently lift up and remove the EMI shield.

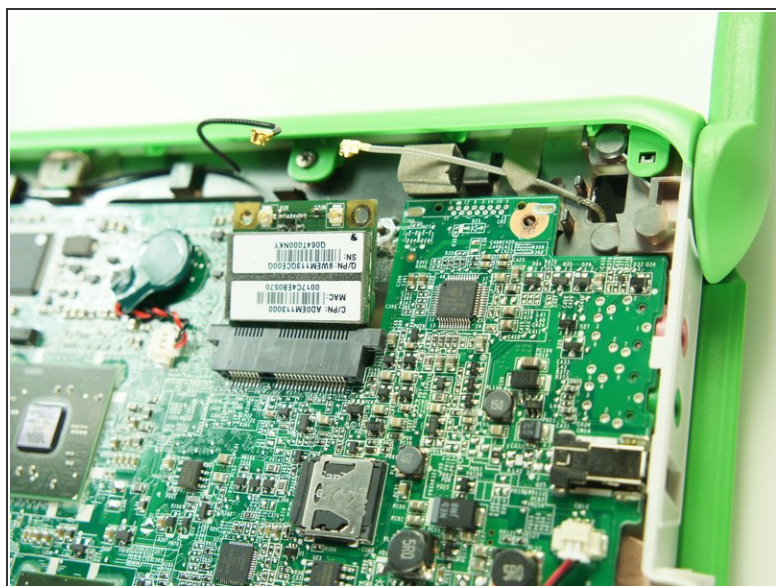
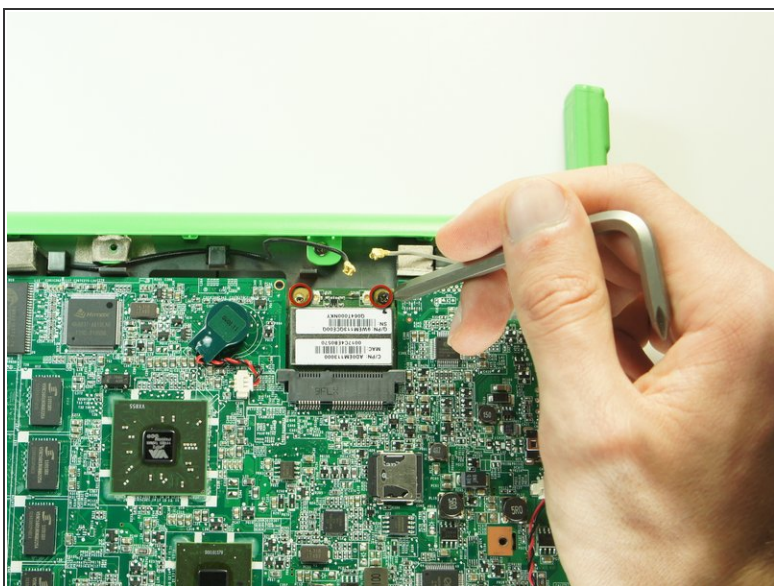
## Step 14



- Gently remove the two antenna cables by lightly pulling the cable connectors up.



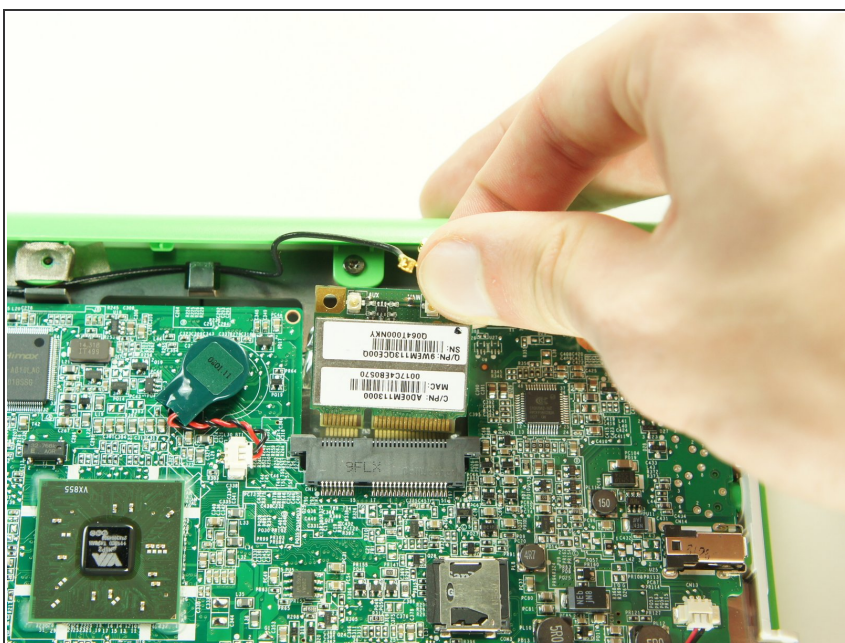
## Step 15



- Remove the two 5mm Phillips #1 screws holding the wireless card to the motherboard.

**i** The wireless card will pop up at an angle.

## Step 16



- Remove the wireless card by gently lifting it out of the socket.



To reassemble your device, follow these instructions in reverse order.