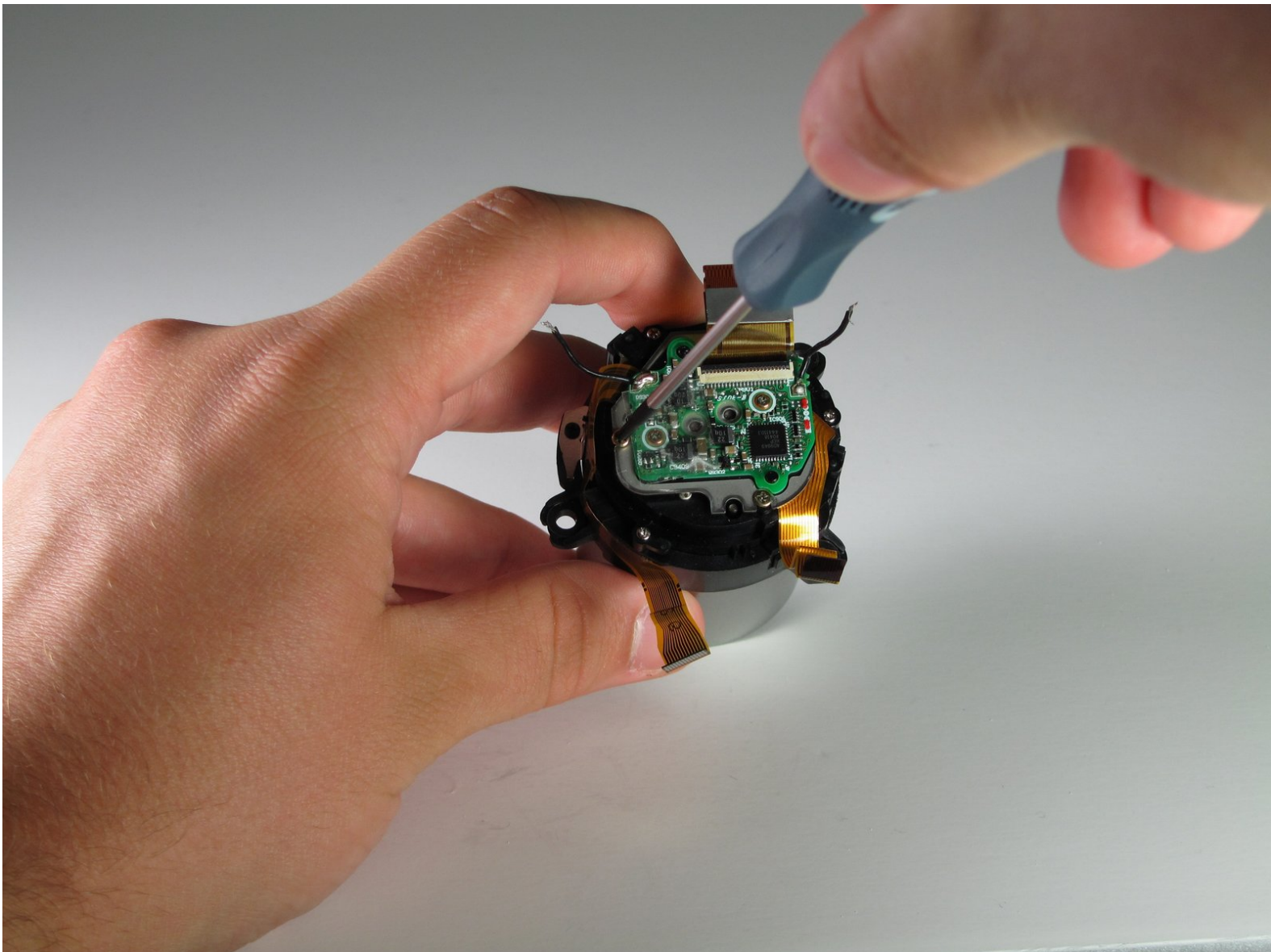




# Olympus C-765 Image Sensor Replacement

Replacing the sensor is like open heart surgery, but for a camera.

Written By: Mason Morgan



---

## INTRODUCTION

The sensor is what captures the image the user takes. It is the most important part of the camera. The image sensor is deep inside the camera, requiring multiple steps and soldering to reach the sensor.



### TOOLS:

- [Phillips #00 Screwdriver](#) (1)
-

## Step 1 — Mother Board



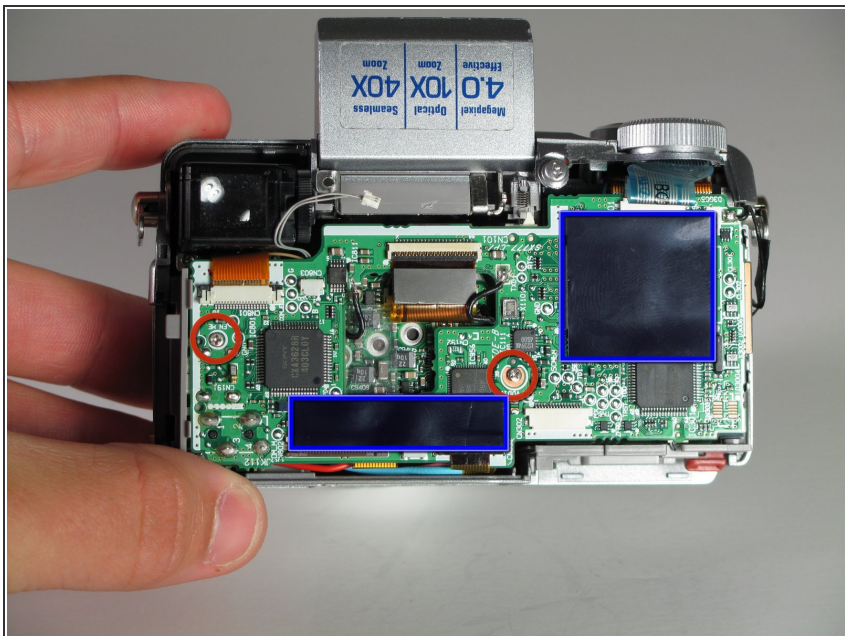
- Remove all of the screws that hold the back plate in place.
    - Unscrew the 4mm screw that is directly to the right of the viewfinder.
  - On the base,
    - Unscrew the 3mm screw in the top left corner.
    - Unscrew all four 3mm screws under the battery cover.
  - Unscrew the 3mm screw on the right side panel.
  - Unscrew the two 2mm screws on the left side panel.
- ⓘ The bullets apply to the three pictures on the step.

## Step 2



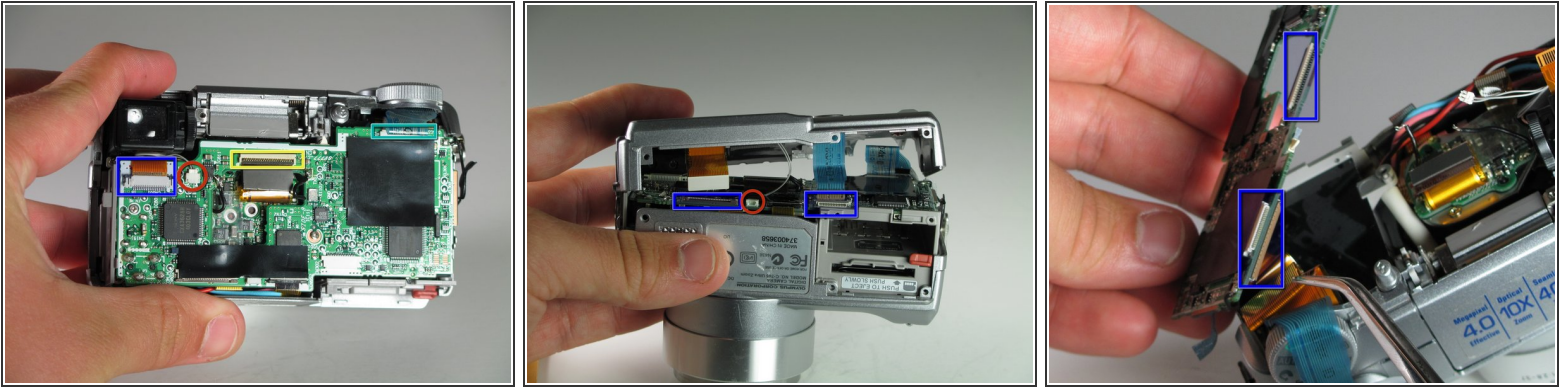
- Now remove the back panel completely.
  - Gently rock the 2 ribbon cables from their sockets.
  - With metal tweezers, grasp and pull white cable out of its clip.


## Step 3



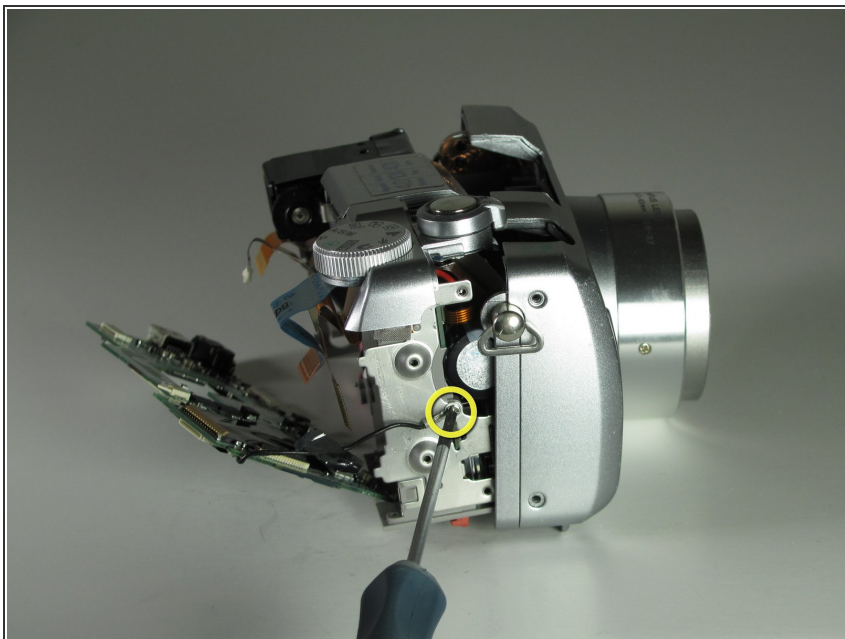
- On the surface of the board,
  - Peel off the plastic sheets on the board.
  - Unscrew 2-3mm from the board itself.

## Step 4



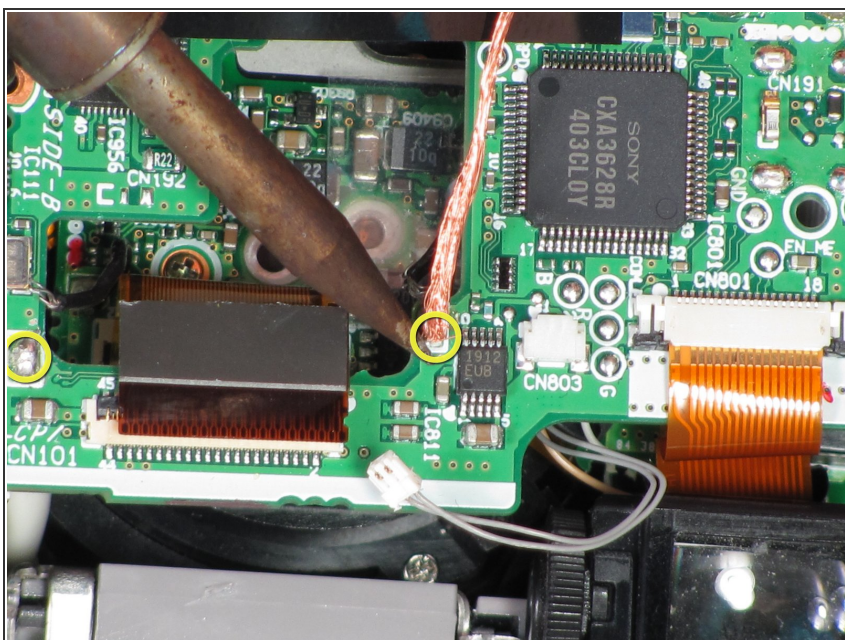
- Loosen the ribbon cables from the board.
    - 1-Directly below the viewfinder.
    - 2-At the Base of the board.
    - 3-At the top right near the selector wheel. 1 on top of the board 2 on the underside.
    - 1-The center of the board, above the central hole.
  - With metal tweezers, remove the two white plastic clips from their sockets one on the base of the board and the other on the surface.
-  The bullets apply to the three pictures on the step.

## Step 5



- Remove the single 3mm ground screw attached to the camera body

## Step 6



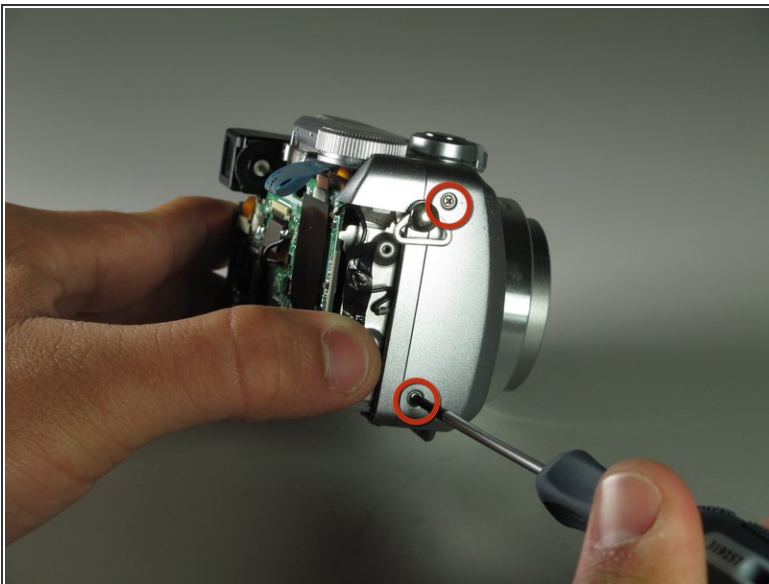
- The mother board has two solder connections that need to be undone to remove the board
- ⚠ Don't attempt to unsolder the joints without previous knowledge of soldering
- ⚠ When soldering avoiding touching any other components with the iron

## Step 7



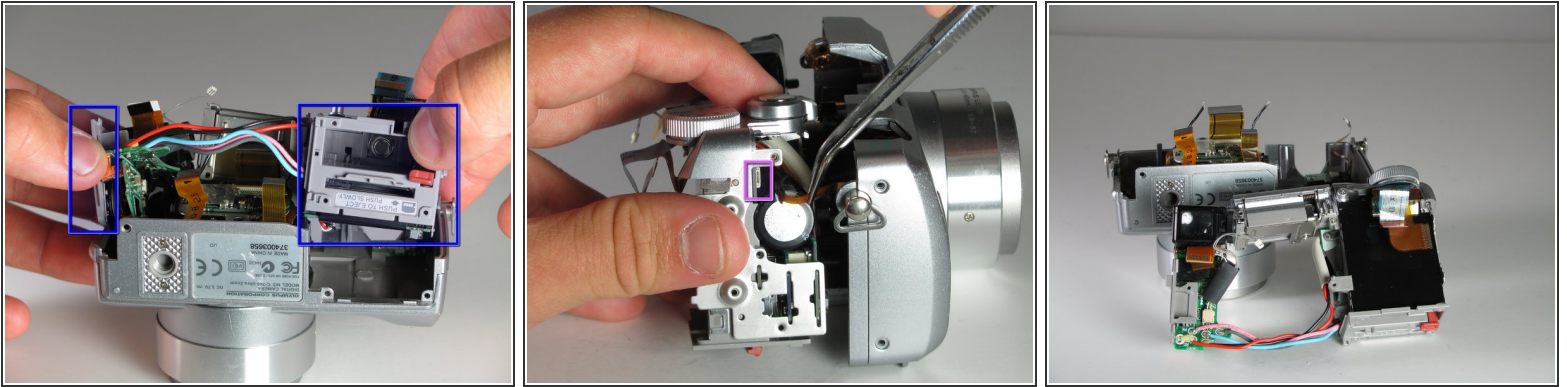
- Once we have the mother board removed it can be replaced with a new board.
- ⓘ While the mother board is removed it is possible to get further into the camera itself to make more repairs.

## Step 8 — Lens



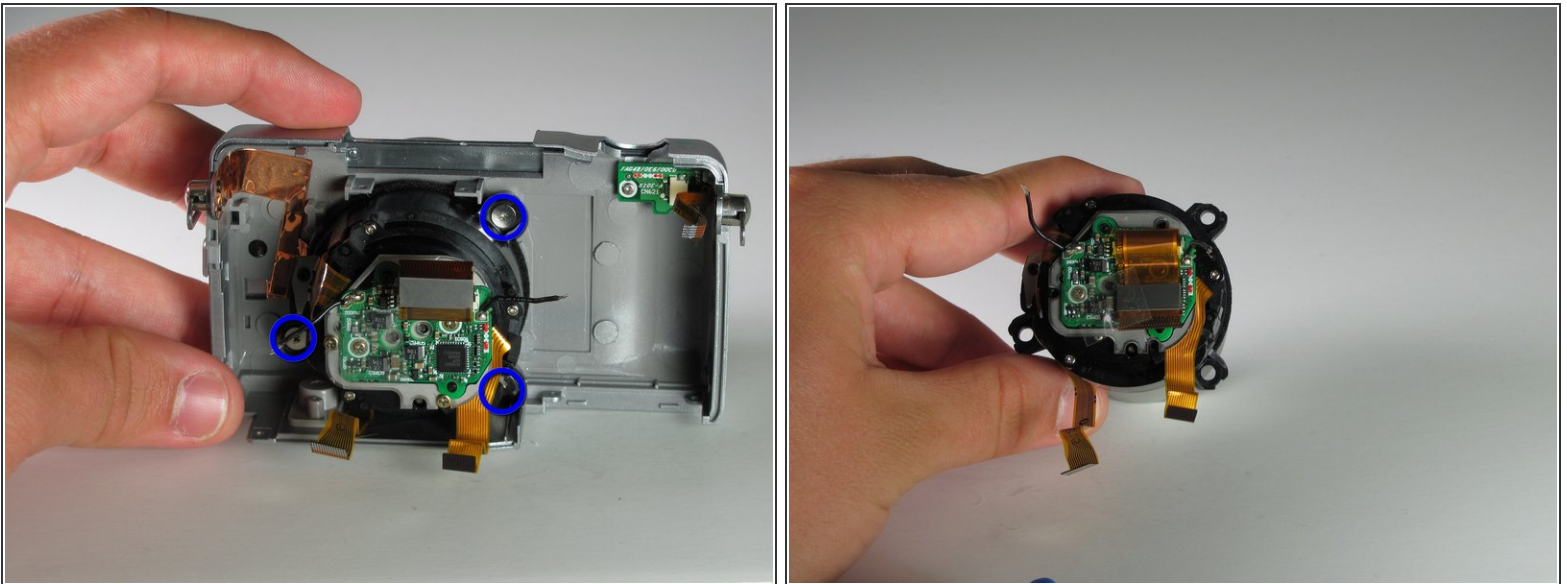
- Now we remove the bulk of the cameras components from the front of the case.
  - Unscrew the 2-3mm Screws from the right side of the casing
  - Pop the flash up, to get access to the two body screws underneath
    - Undo the 2-3mm screws

## Step 9



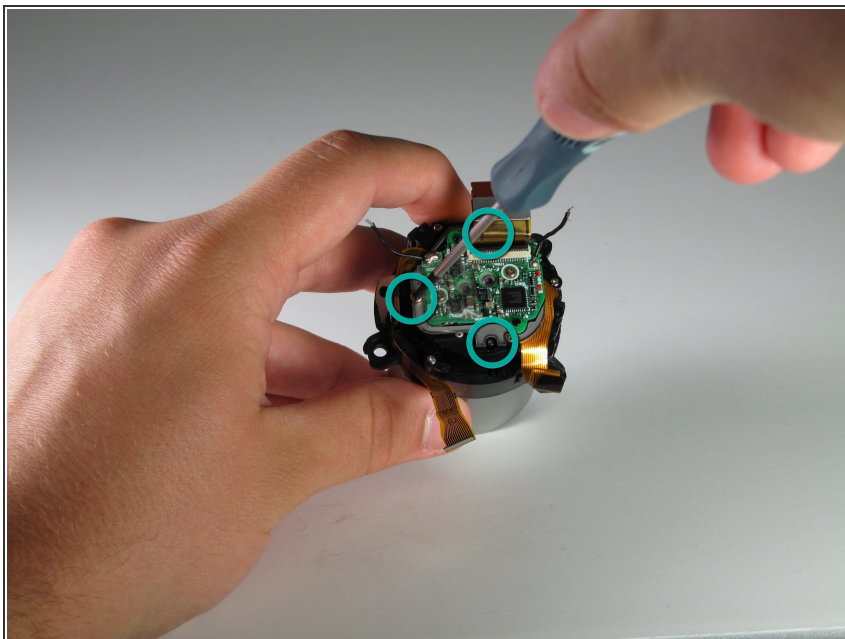
- Gently pull on the battery casing and the A/V ports to remove the connected components
- Remove the small ribbon cable from the right side of the casing

## Step 10



- Remove the lens assembly from front casing of the body
  - Undo the 3 flat top 4mm screws
- The lens can now be gently pulled away from the camera body
- ⓘ The lens can now be replaced or cleaned

## Step 11 — Image Sensor



- The lens does not have to be removed from the body to access or remove the image sensor
- Remove the 3-3mm screws holding the sensor in place.

⚠ Avoid touching the sensor surface

To reassemble your device, follow these instructions in reverse order.