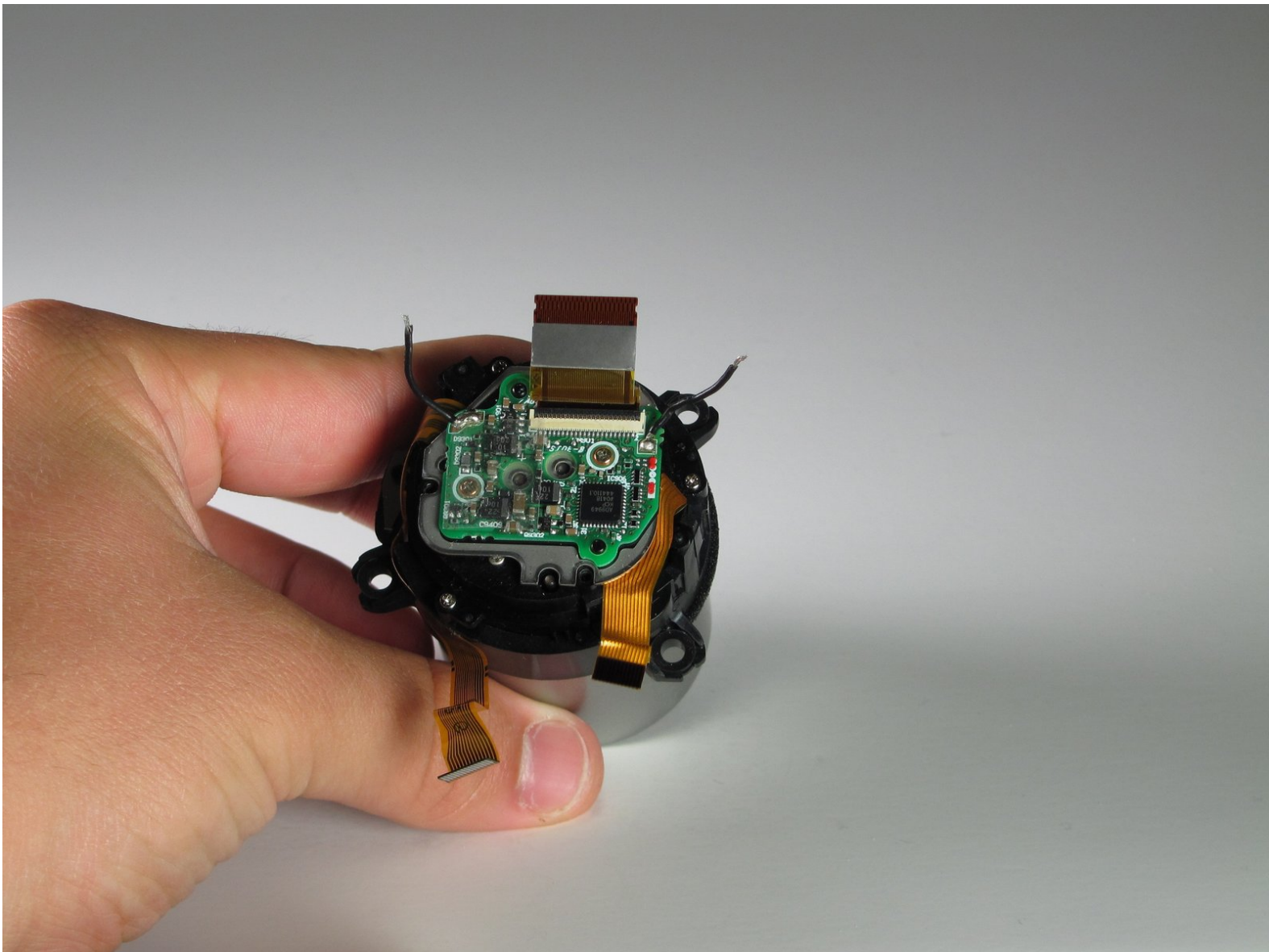




Olympus C-765 Lens Replacement

Changing the lens may offer a wide variety of shooting options by changing the focal length. Lens may also be replaced if they are broken or malfunctioning.

Written By: Mason Morgan



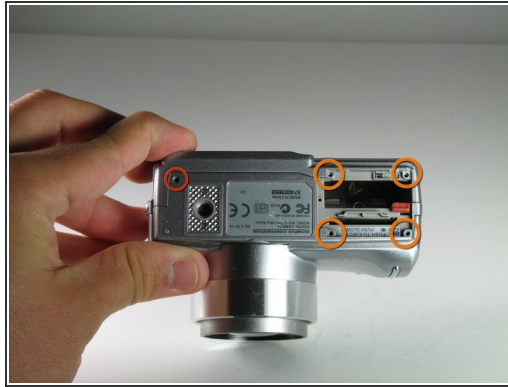
INTRODUCTION

The lens may be cracked, dirty, or just need to be replaced. This guide is a difficult guide which involves removing many elements of the camera and soldering to reach the lens.

TOOLS:

- [Phillips #00 Screwdriver](#) (1)
-

Step 1 — Mother Board



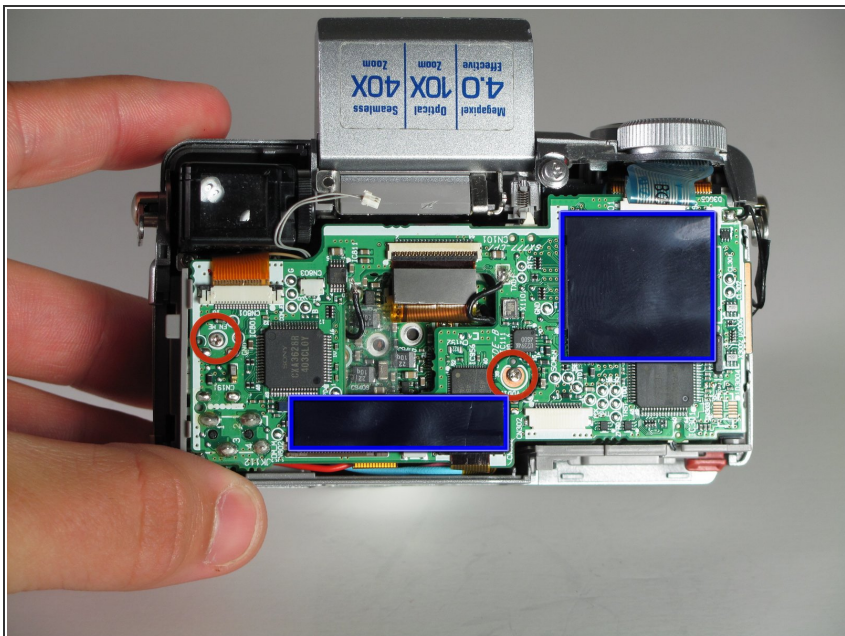
- Remove all of the screws that hold the back plate in place.
 - Unscrew the 4mm screw that is directly to the right of the viewfinder.
 - On the base,
 - Unscrew the 3mm screw in the top left corner.
 - Unscrew all four 3mm screws under the battery cover.
 - Unscrew the 3mm screw on the right side panel.
 - Unscrew the two 2mm screws on the left side panel.
- ⓘ The bullets apply to the three pictures on the step.

Step 2



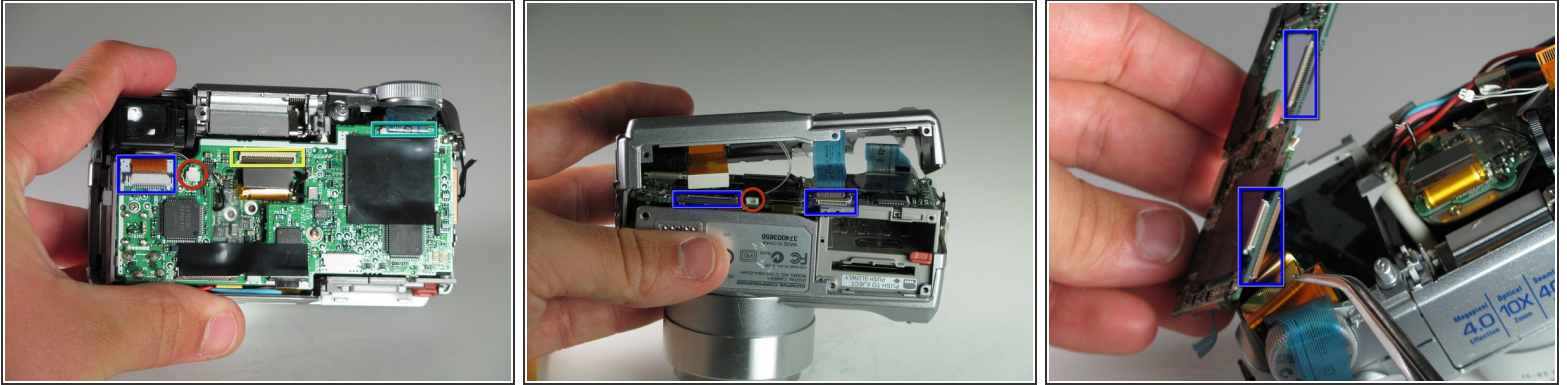
- Now remove the back panel completely.
 - Gently rock the 2 ribbon cables from their sockets.
 - With metal tweezers, grasp and pull white cable out of its clip.


Step 3



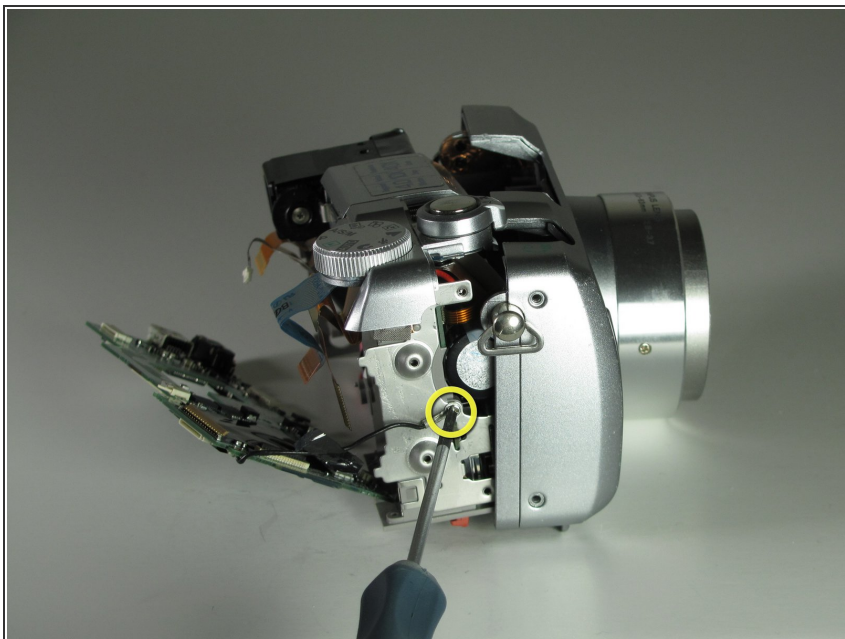
- On the surface of the board,
 - Peel off the plastic sheets on the board.
 - Unscrew 2-3mm from the board itself.

Step 4



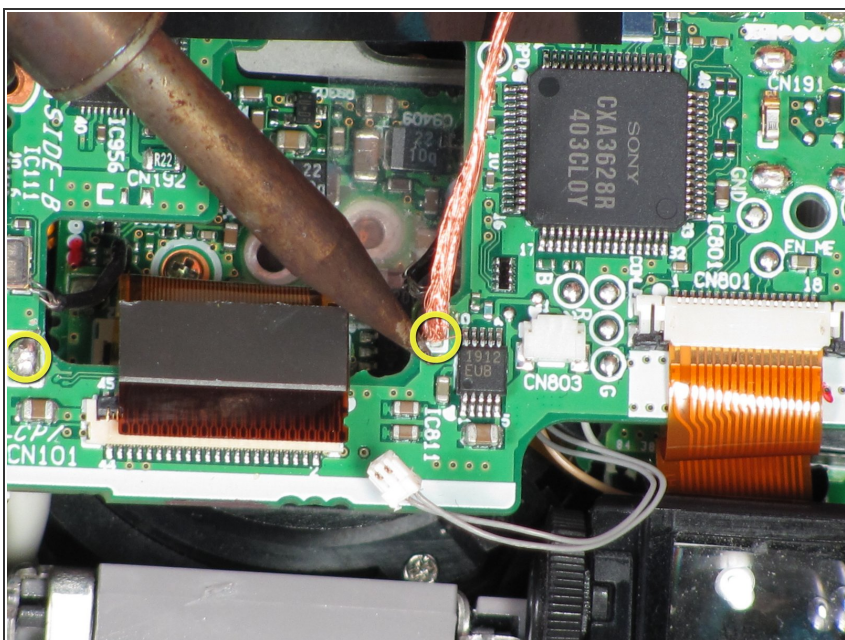
- Loosen the ribbon cables from the board.
 - 1-Directly below the viewfinder.
 - 2-At the Base of the board.
 - 3-At the top right near the selector wheel. 1 on top of the board 2 on the underside.
 - 1-The center of the board, above the central hole.
 - With metal tweezers, remove the two white plastic clips from their sockets one on the base of the board and the other on the surface.
-  The bullets apply to the three pictures on the step.

Step 5



- Remove the single 3mm ground screw attached to the camera body

Step 6



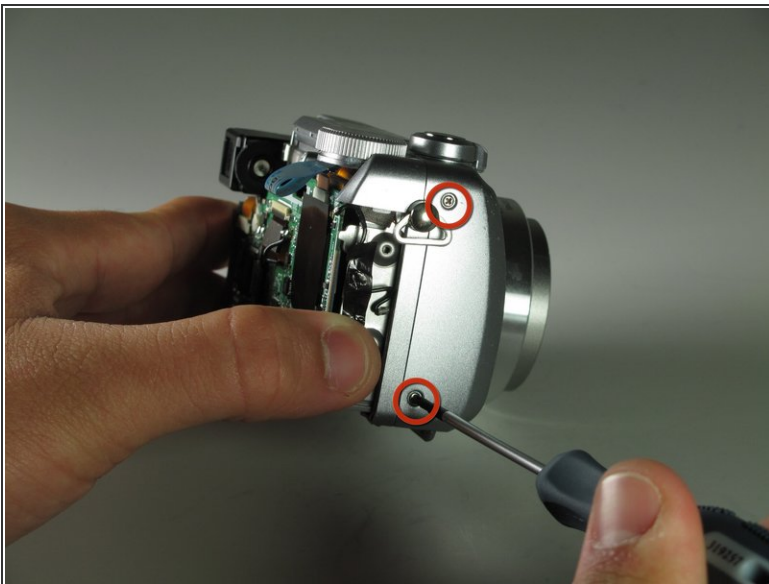
- The mother board has two solder connections that need to be undone to remove the board
- ⚠ Don't attempt to unsolder the joints without previous knowledge of soldering
- ⚠ When soldering avoiding touching any other components with the iron

Step 7



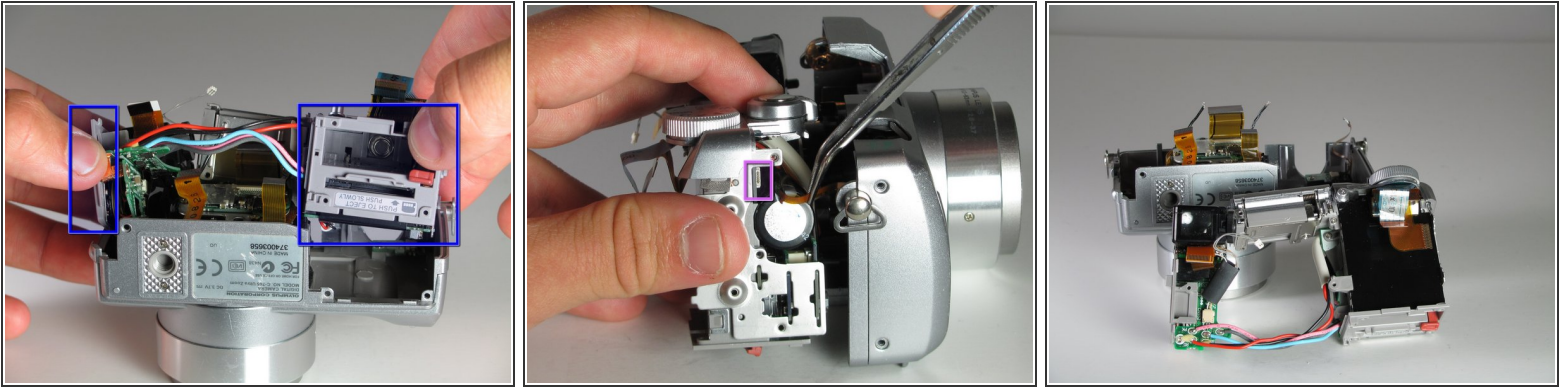
- Once we have the mother board removed it can be replaced with a new board.
- ❗ While the mother board is removed it is possible to get further into the camera itself to make more repairs.

Step 8 — Lens



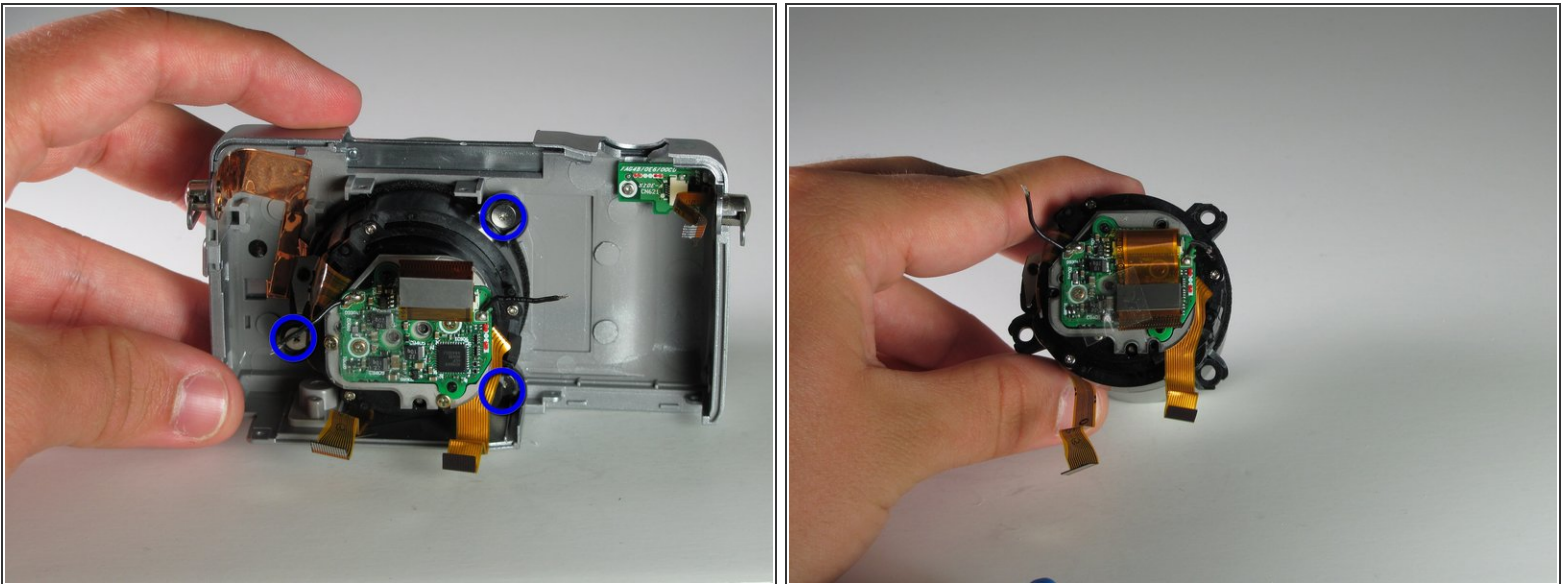
- Now we remove the bulk of the cameras components from the front of the case.
 - Unscrew the 2-3mm Screws from the right side of the casing
- Pop the flash up, to get access to the two body screws underneath
 - Undo the 2-3mm screws

Step 9



- Gently pull on the battery casing and the A/V ports to remove the connected components
- Remove the small ribbon cable from the right side of the casing

Step 10



- Remove the lens assembly from front casing of the body
 - Undo the 3 flat top 4mm screws
- The lens can now be gently pulled away from the camera body
- ⓘ The lens can now be replaced or cleaned

To reassemble your device, follow these instructions in reverse order.