



Olympus Camedia D560 Rear Panel Control Buttons Replacement

This guide demonstrates how to remove and either clean or replace the rear panel control buttons of the camera.

Written By: GradStudents2011



INTRODUCTION

Step by step instructions to clean or replace the control buttons on the camera.



TOOLS:

- [Phillips #00 Screwdriver](#) (1)
 - [iFixit Opening Tools](#) (1)
-

Step 1 — Rear Panel Control Buttons



i Before disassembling your camera, be sure it is powered off.

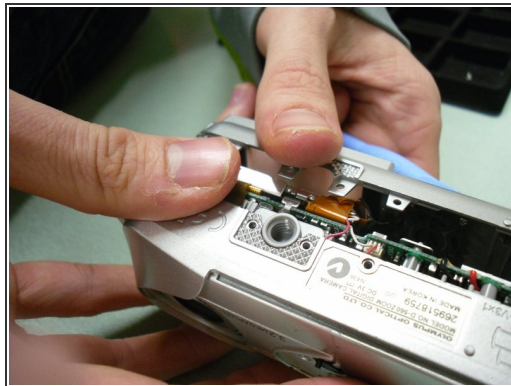
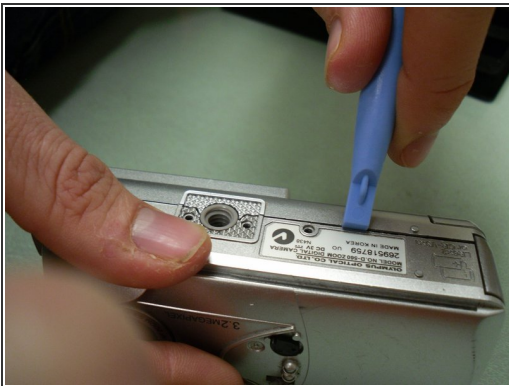
- Remove two screws from the video port located at the side panel of the camera.
- Remove three screws from the bottom panel of the camera.

Step 2



- Open the USB port cover, and remove three screws from inside.
- Next, open the memory slot cover and remove the screw.

Step 3



- Use the blue opening tool to loosen and separate the back cover from the camera.

Step 4



- Locate and unscrew the three screws inside the back cover body (picture 3) .
- Remove button pad assembly from the back cover.

Step 5



- ⓘ The button assembly is now separate from the back cover.
- Inspect for broken areas. Replace or clean the button parts.

To reassemble your device, follow these instructions in reverse order.