



Olympus D590 Backplate Replacement

Written By: Katie



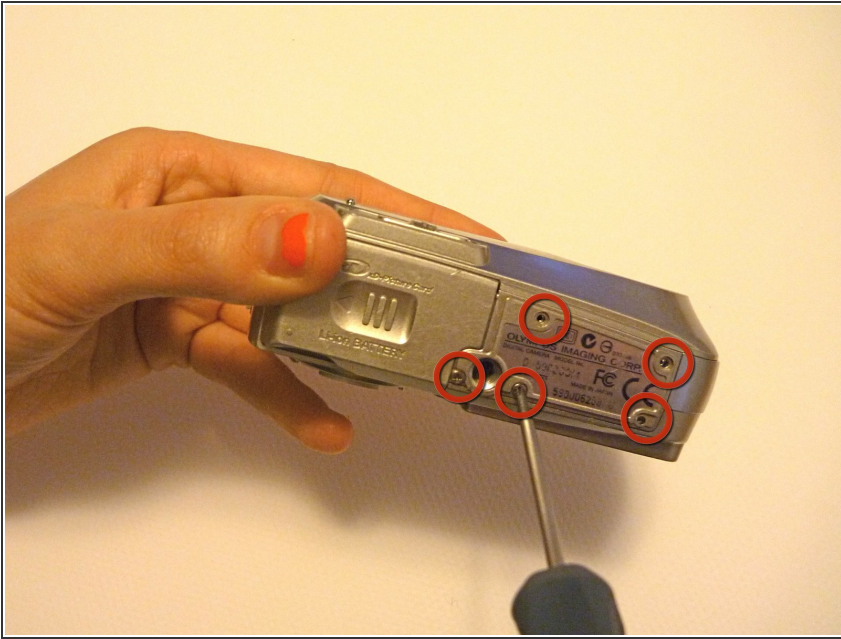
INTRODUCTION

The guide shows how to remove the backplate of the camera. It is a prerequisite to other guides such as replacing the mic, speaker, LCD screen, and lens.

TOOLS:

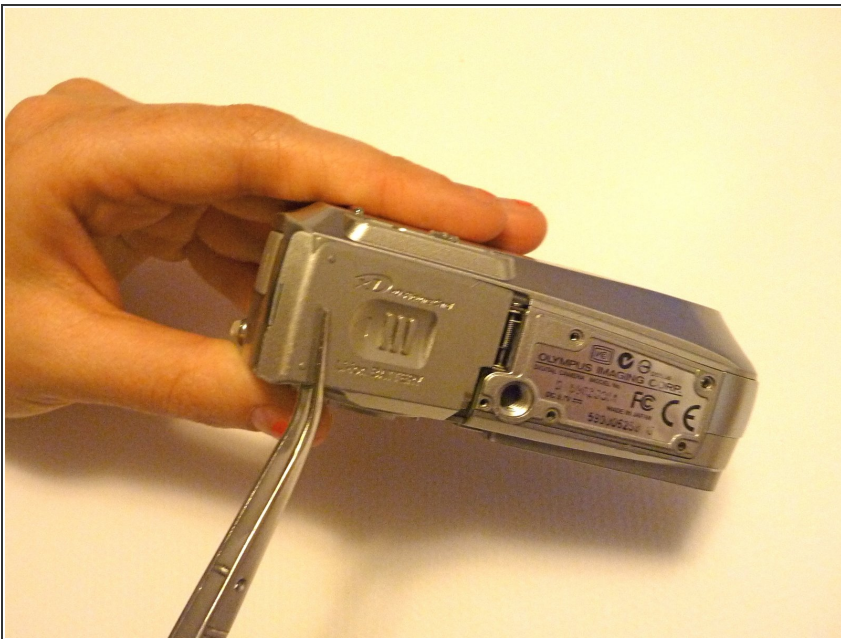
- [Phillips #00 Screwdriver](#) (1)
 - [Flathead 3/32" or 2.5 mm Screwdriver](#) (1)
 - [iFixit Opening Tools](#) (1)
-

Step 1 — Face Plate



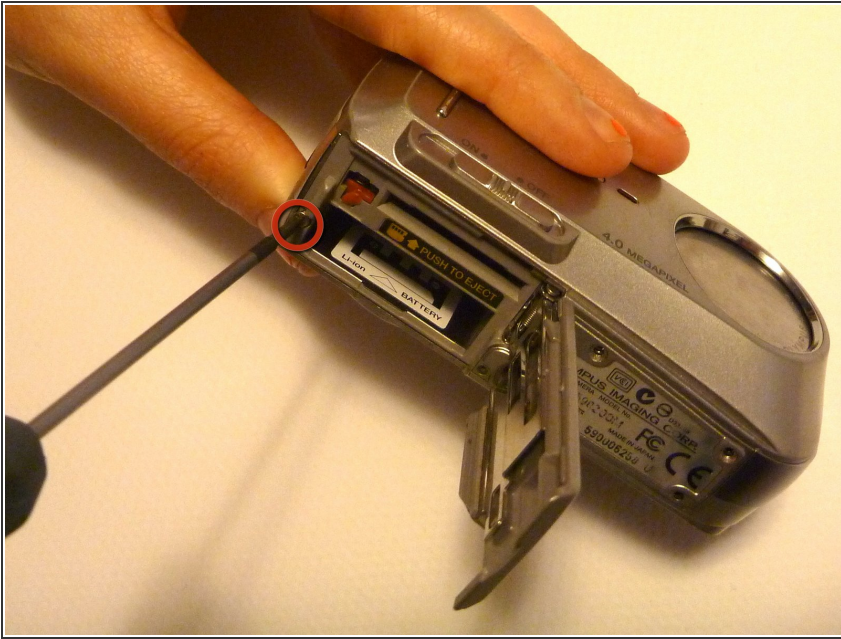
- Flip camera so you are looking at the bottom.
- Unscrew all 5 base plate screws.

Step 2



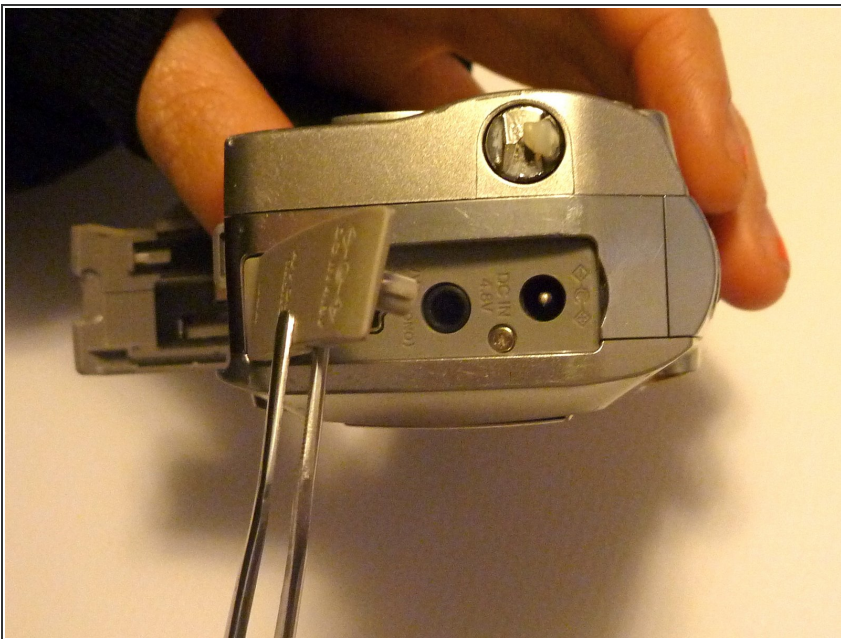
- Lift open retainer clip by sliding the clip to the left and letting the clip pop up.

Step 3



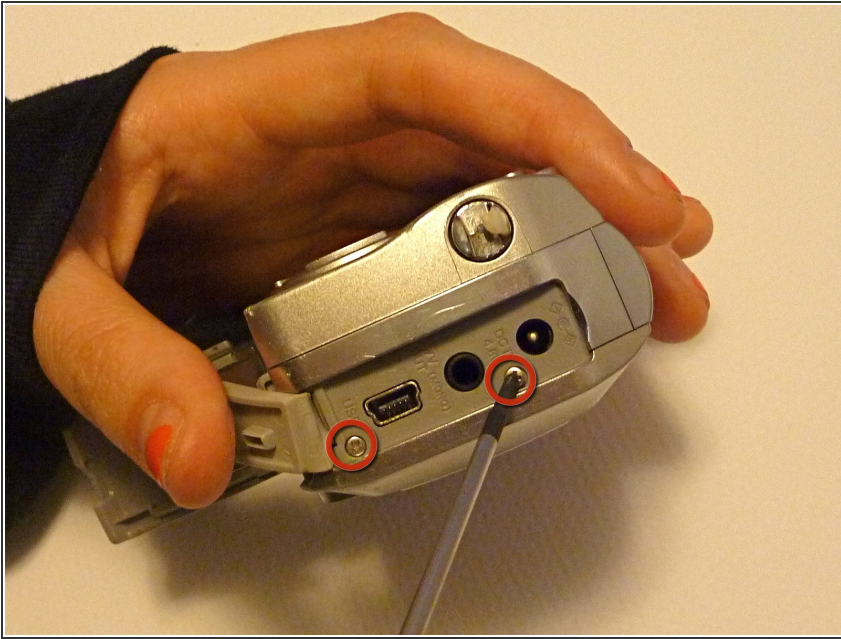
- Unscrew the single screw located next to the battery slot.

Step 4



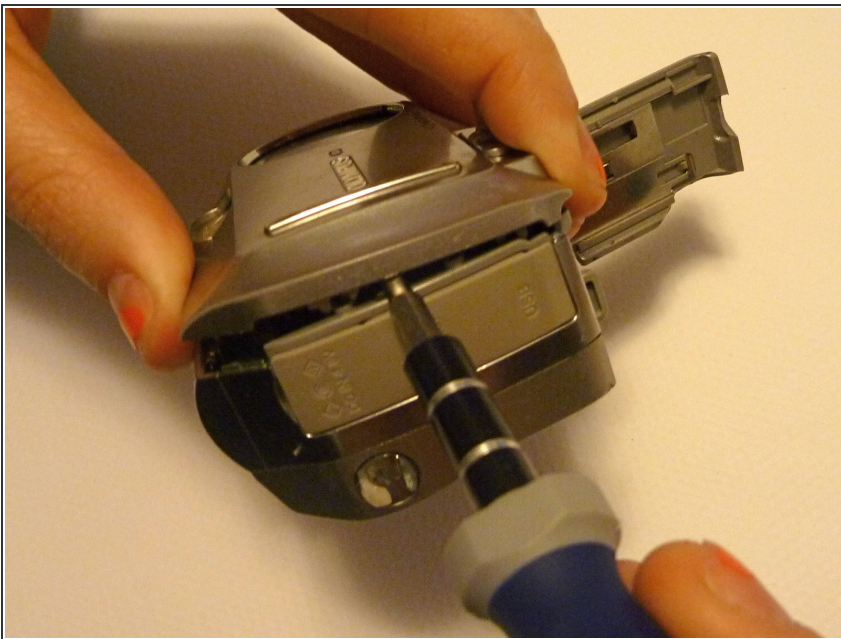
- Turn the camera so that the USB, AV and DC in/out rubber plate it facing you.
- Lift the rubber plate exposing the ports beneath.

Step 5



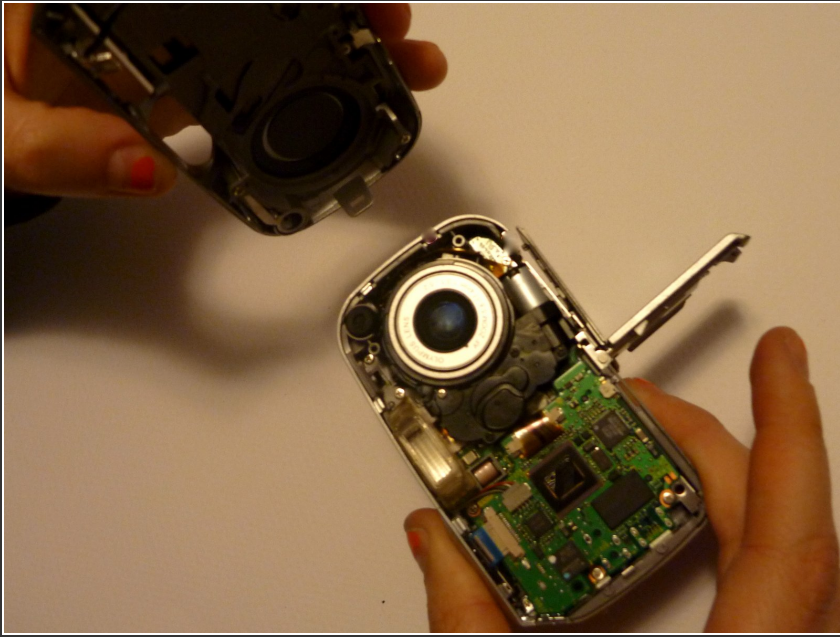
- Unscrew the 2 screws next to the USB and AC ports.

Step 6



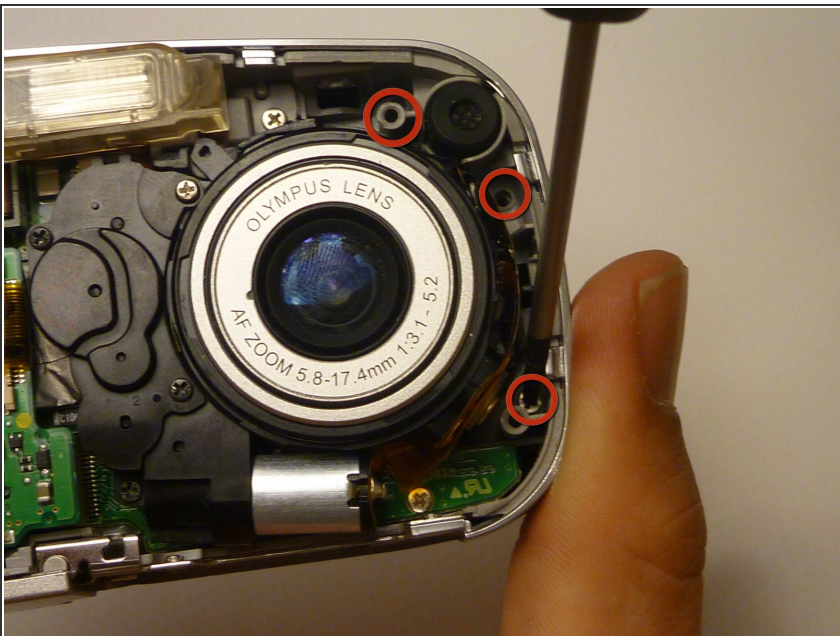
- Use a flathead screwdriver or another flat opening tool to pry the faceplate from the whole device.

Step 7



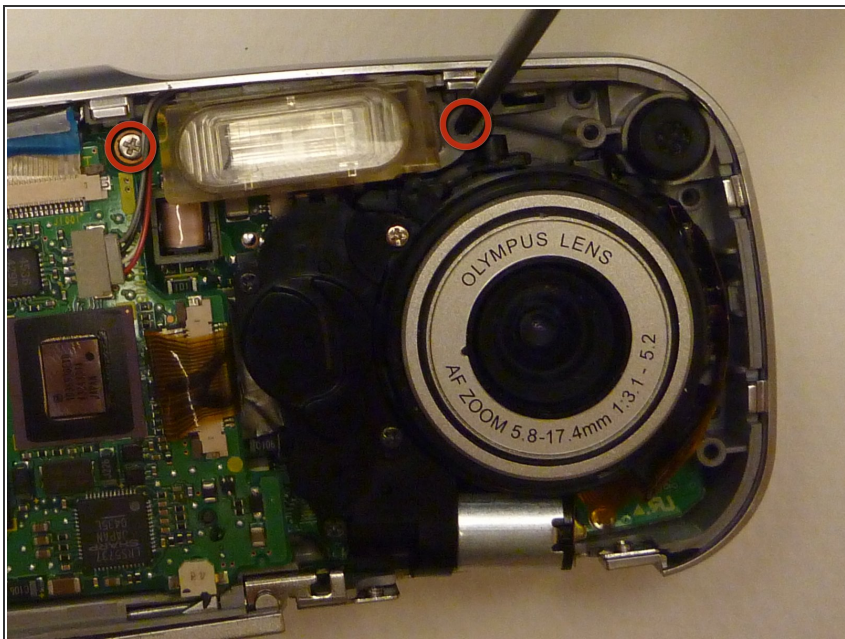
- Pull off the faceplate to reveal the inside of the camera.
- ⚠ Be careful of the connector that goes from the faceplate to the motherboard . Disconnecting this line will cause the camera not power on through the on/off switch anymore.

Step 8 — Backplate



- Use a phillips head screwdriver to remove the 3 screws highlighted in the picture.

Step 9



- Unscrew the 2 screws located on either side of the flash.

Step 10



- Get a flathead screwdriver or an iPod opening tool (both are shown in this picture).
- Carefully pry off the blackplate from the remaining part of the camera.

Step 11



- Pull the backplate off.

To reassemble your device, follow these instructions in reverse order.