



Olympus D590 Face Plate Replacement

Written By: Katie



INTRODUCTION

Removal of the front plate to get into the logic board, lens, etc.



TOOLS:

- [iFixit Opening Tools](#) (1)
 - [Phillips #00 Screwdriver](#) (1)
-

Step 1 — Face Plate



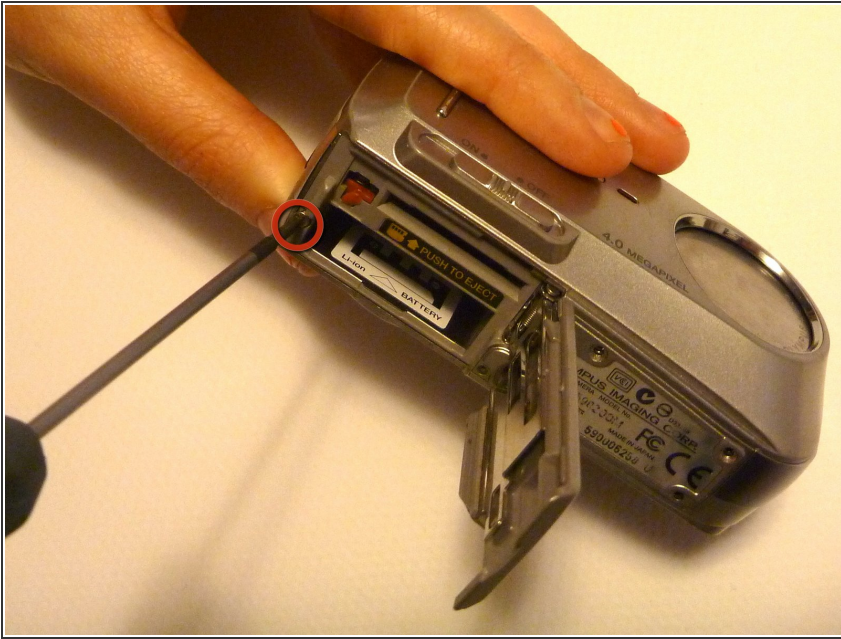
- Flip camera so you are looking at the bottom.
- Unscrew all 5 base plate screws.

Step 2



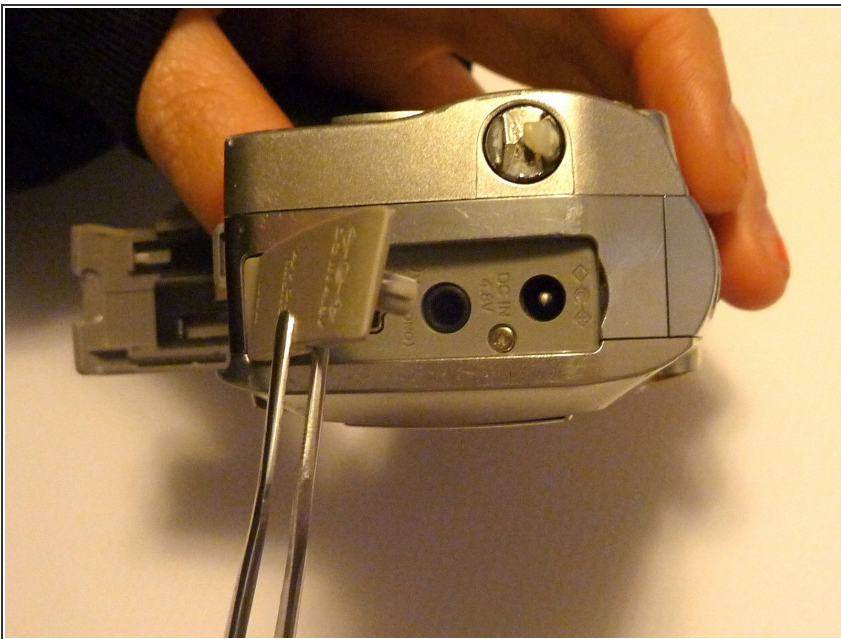
- Lift open retainer clip by sliding the clip to the left and letting the clip pop up.

Step 3



- Unscrew the single screw located next to the battery slot.

Step 4



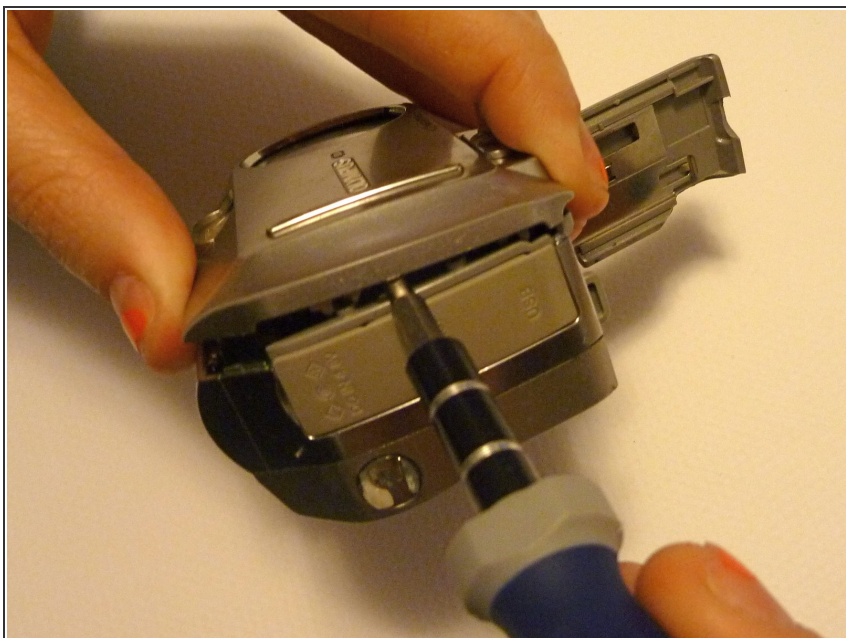
- Turn the camera so that the USB, AV and DC in/out rubber plate it facing you.
- Lift the rubber plate exposing the ports beneath.

Step 5



- Unscrew the 2 screws next to the USB and AC ports.

Step 6



- Use a flathead screwdriver or another flat opening tool to pry the faceplate from the whole device.

Step 7



- Pull off the faceplate to reveal the inside of the camera.
- ⚠ Be careful of the connector that goes from the faceplate to the motherboard . Disconnecting this line will cause the camera not power on through the on/off switch anymore.

To reassemble your device, follow these instructions in reverse order.