



Olympus D590 Lens Replacement

Written By: Joshua



INTRODUCTION

This guide shows how to replace the camera lens and surrounding mechanisms (including the motor).



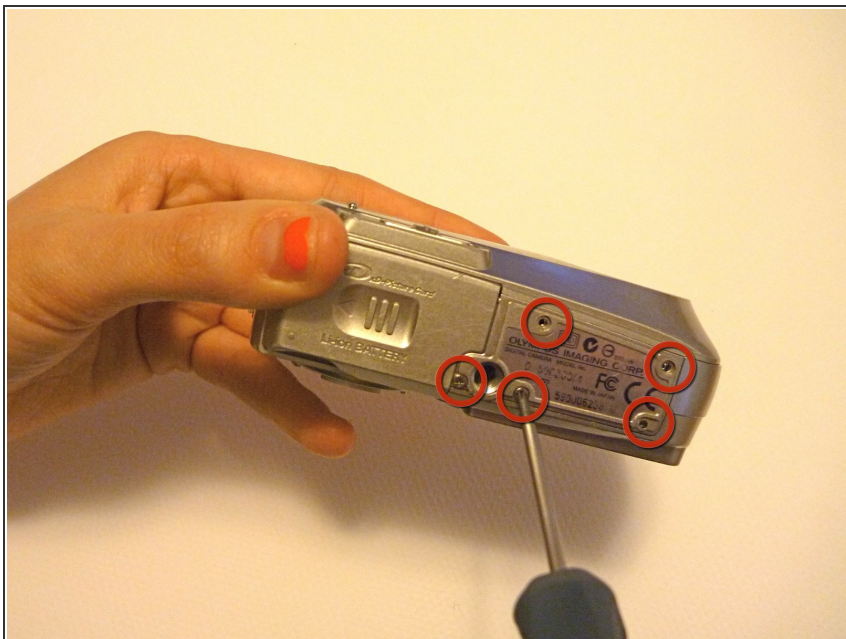
TOOLS:

- [Tweezers](#) (1)

Optional, but helpful

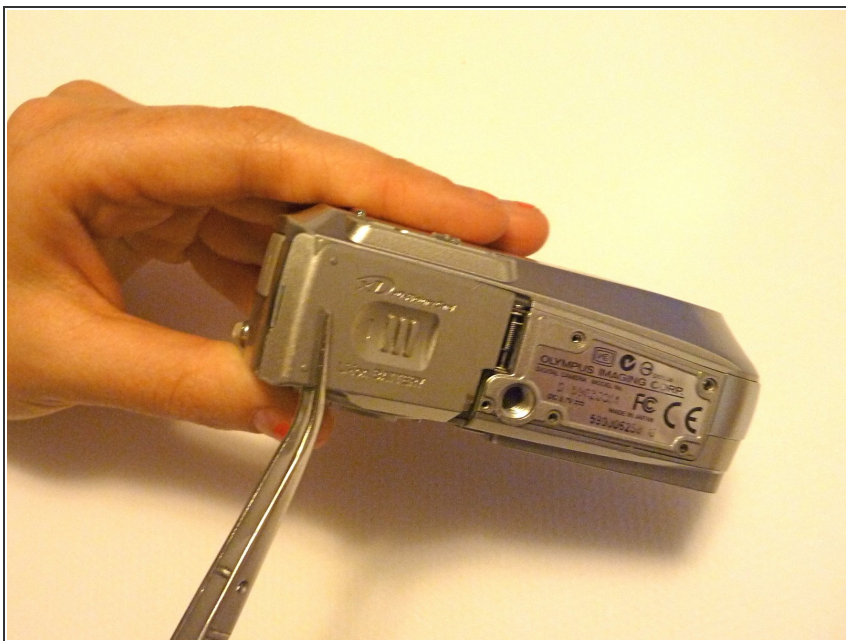
- [Phillips #0 Screwdriver](#) (1)
-

Step 1 — Face Plate



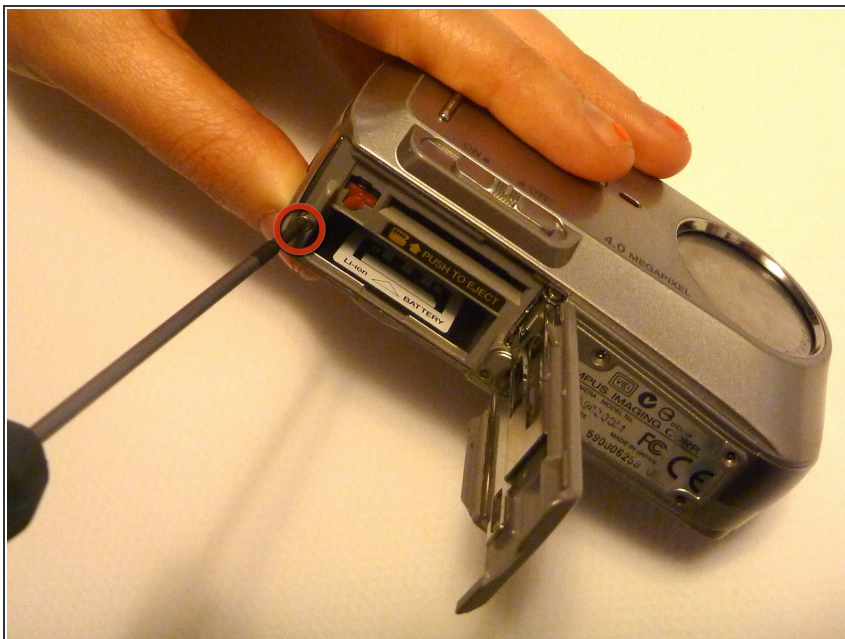
- Flip camera so you are looking at the bottom.
- Unscrew all 5 base plate screws.

Step 2



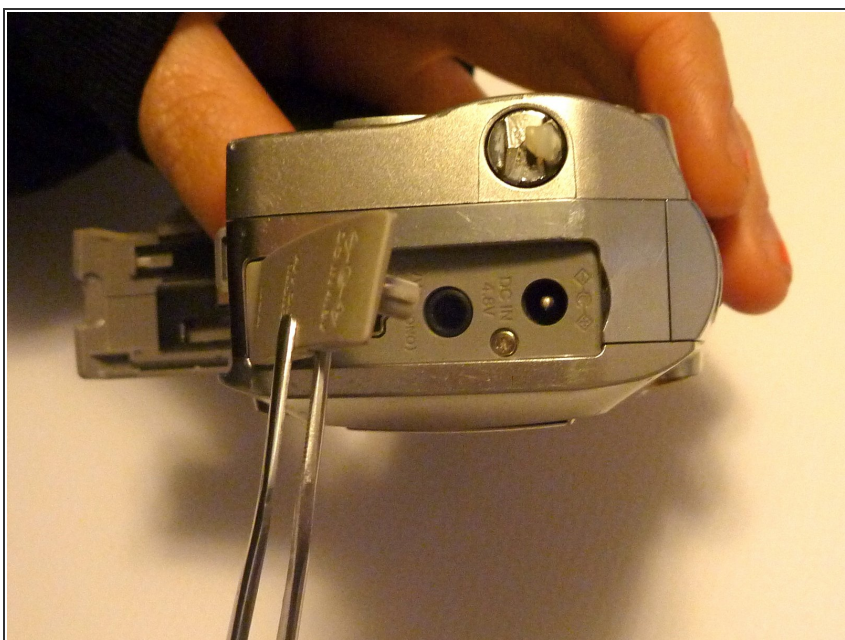
- Lift open retainer clip by sliding the clip to the left and letting the clip pop up.

Step 3



- Unscrew the single screw located next to the battery slot.

Step 4



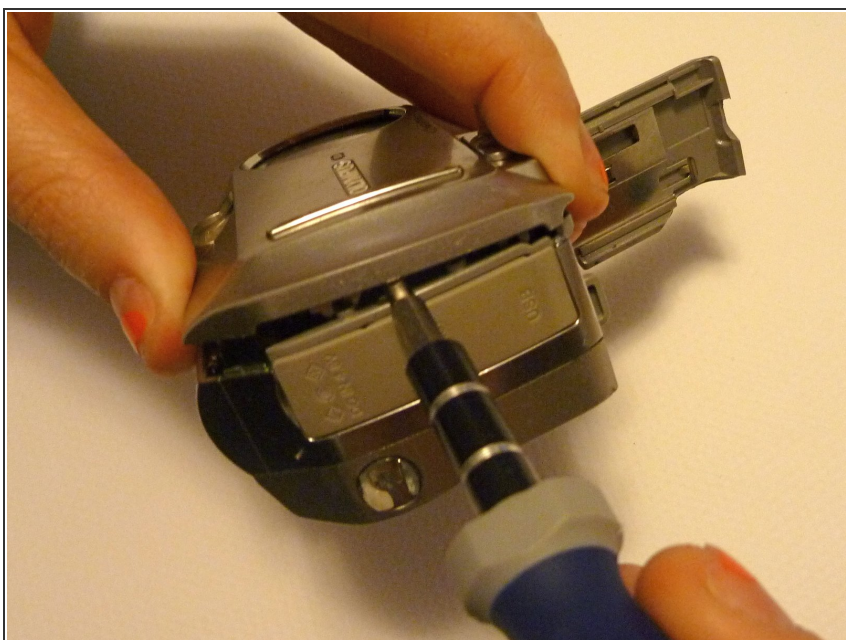
- Turn the camera so that the USB, AV and DC in/out rubber plate is facing you.
- Lift the rubber plate exposing the ports beneath.

Step 5



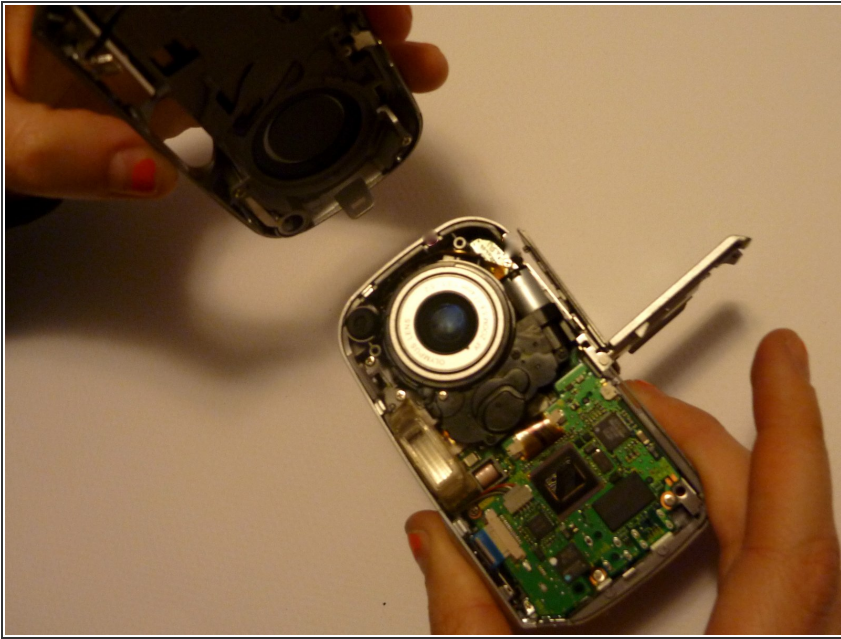
- Unscrew the 2 screws next to the USB and AC ports.

Step 6



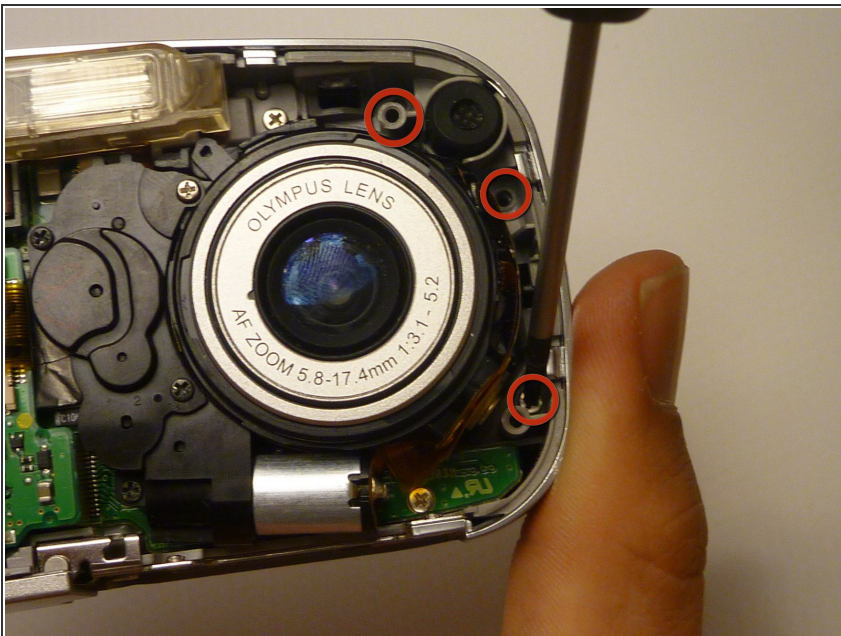
- Use a flathead screwdriver or another flat opening tool to pry the faceplate from the whole device.

Step 7



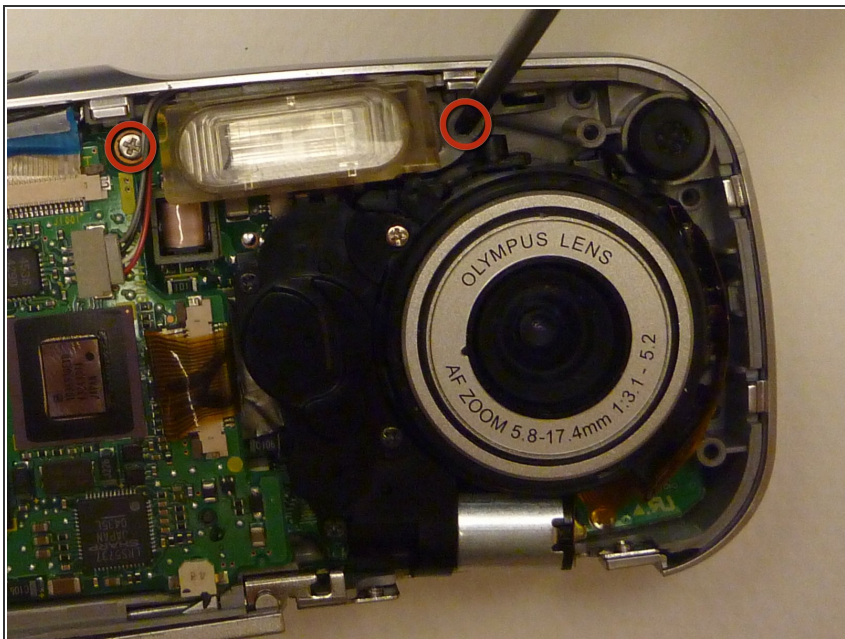
- Pull off the faceplate to reveal the inside of the camera.
- ⚠ Be careful of the connector that goes from the faceplate to the motherboard . Disconnecting this line will cause the camera not power on through the on/off switch anymore.

Step 8 — Backplate



- Use a phillips head screwdriver to remove the 3 screws highlighted in the picture.

Step 9



- Unscrew the 2 screws located on either side of the flash.

Step 10



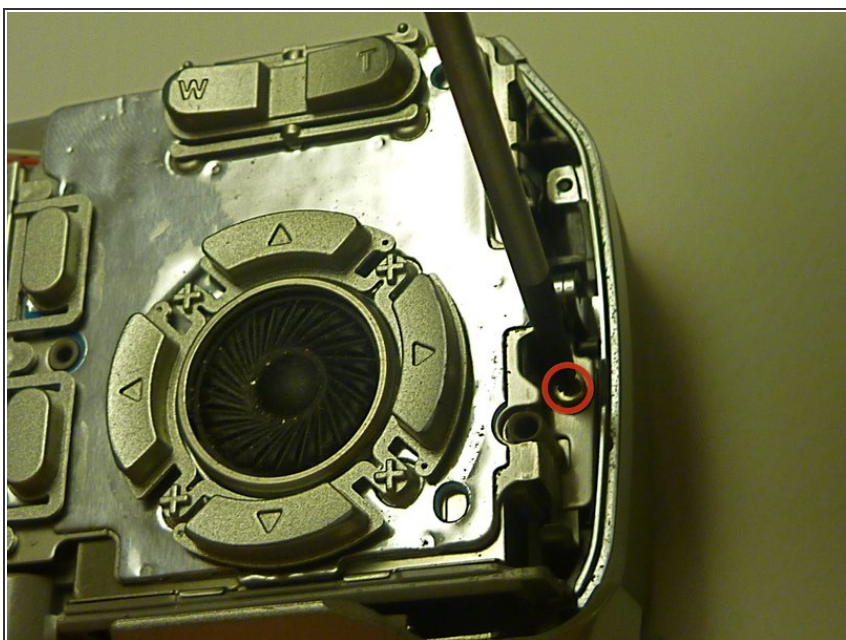
- Get a flathead screwdriver or an iPod opening tool (both are shown in this picture).
- Carefully pry off the blackplate from the remaining part of the camera.

Step 11



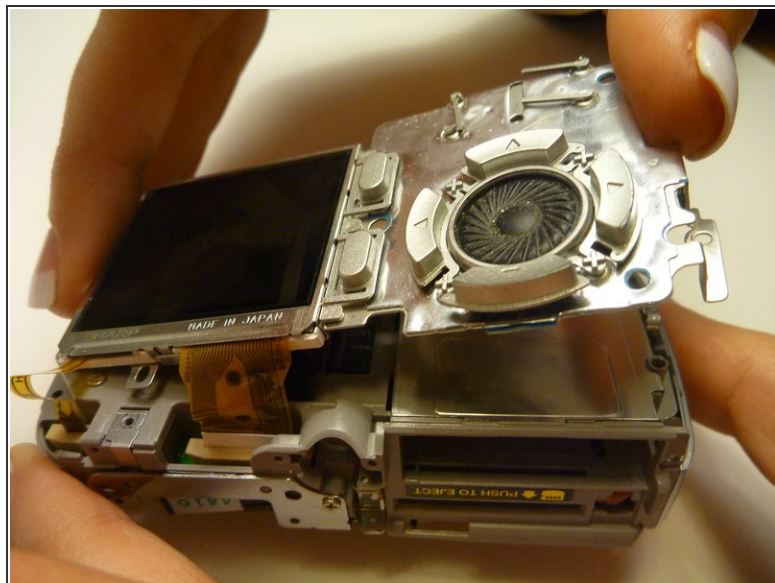
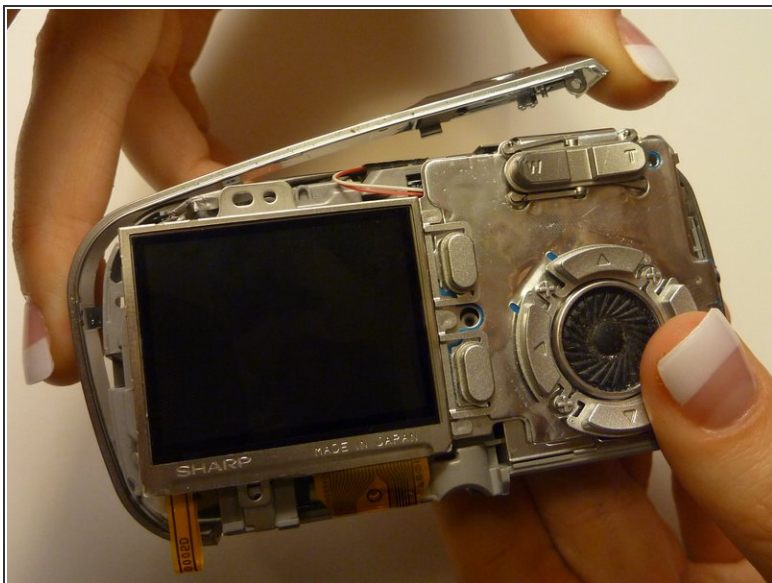
- Pull the backplate off.

Step 12 — LCD screen



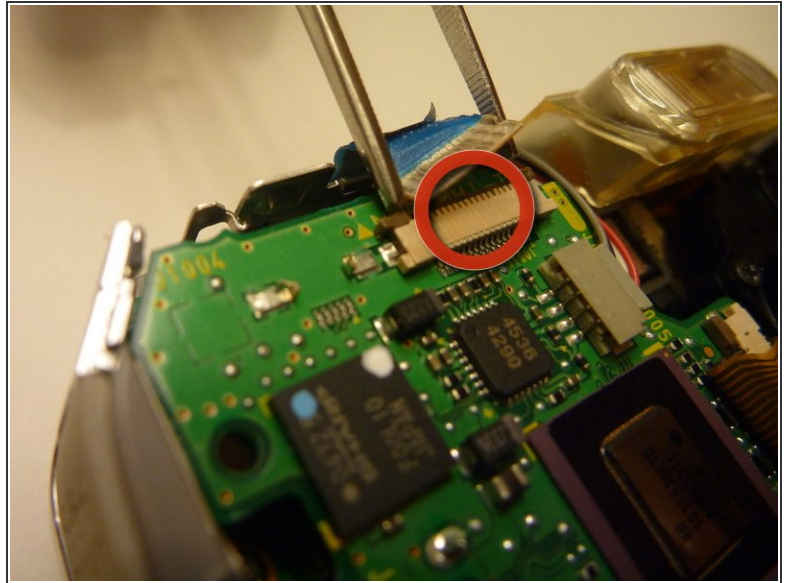
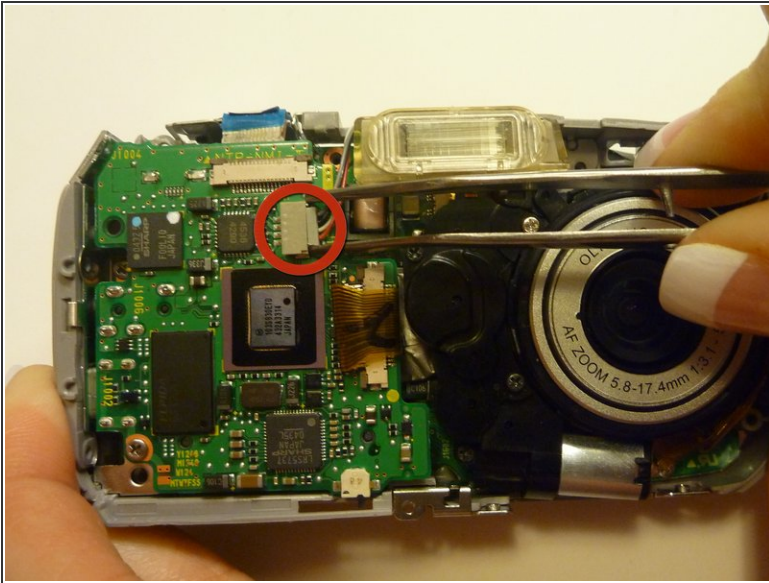
- Unscrew the screw shown in the picture from LCD screen.

Step 13



- Remove the side pannel by sliding it off the body of the camera.
- Lift the camera no more than 3cm to make sure all screws have been taken off.

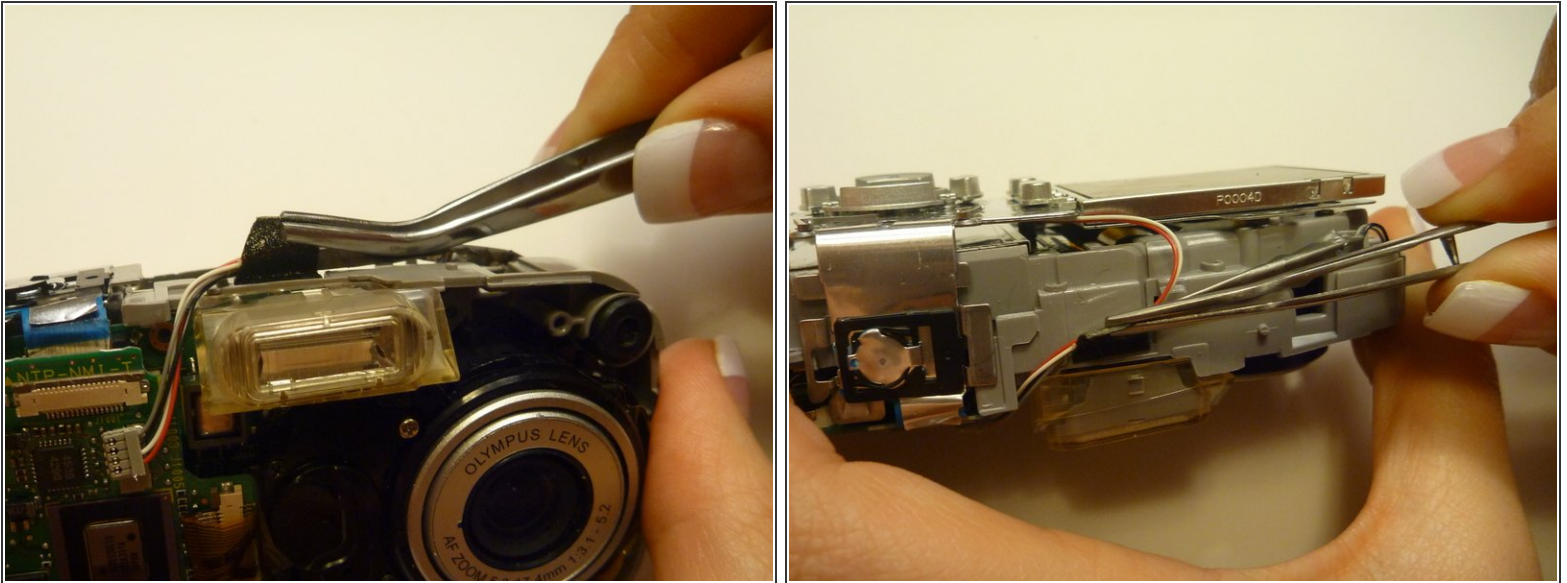
Step 14



- Flip camera so you are looking at the front.
- Remove gray and blue wiring with tweezers by gently wiggling and pulling.

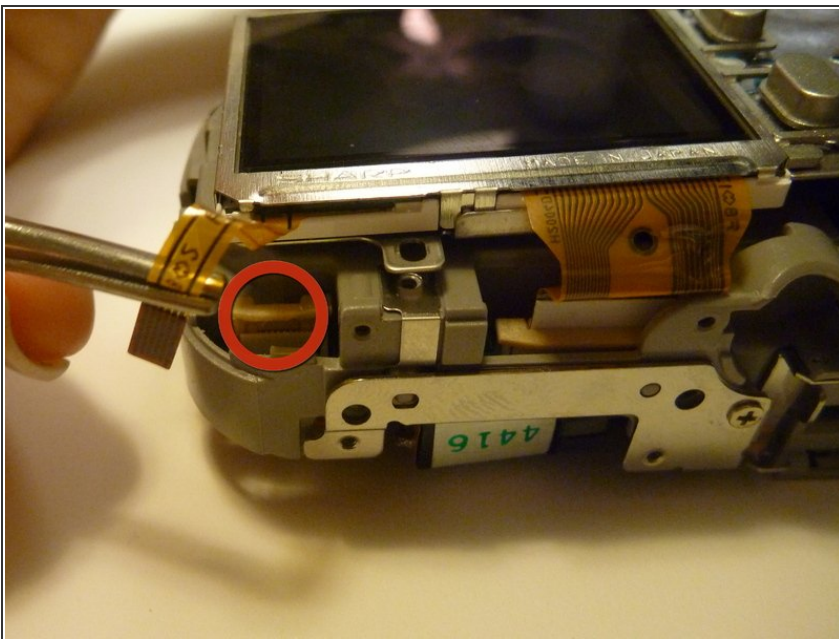
⚠ Be careful not to rip the wiring tape with the tweezers.

Step 15



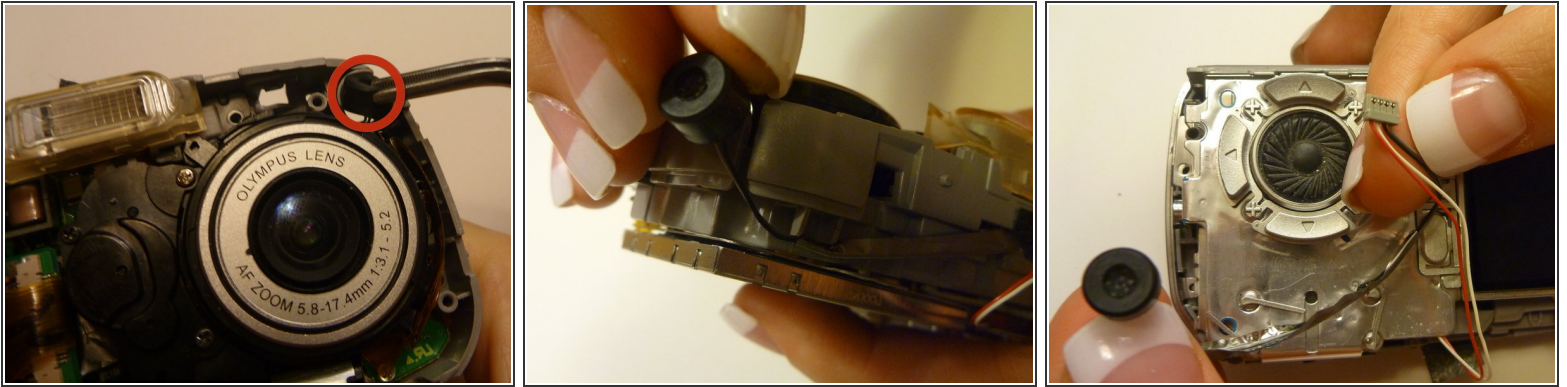
- Locate the tape securing the wiring with the gray end piece located on top of the camera.
- Gently lift up on the tape till all wires are exposed.

Step 16



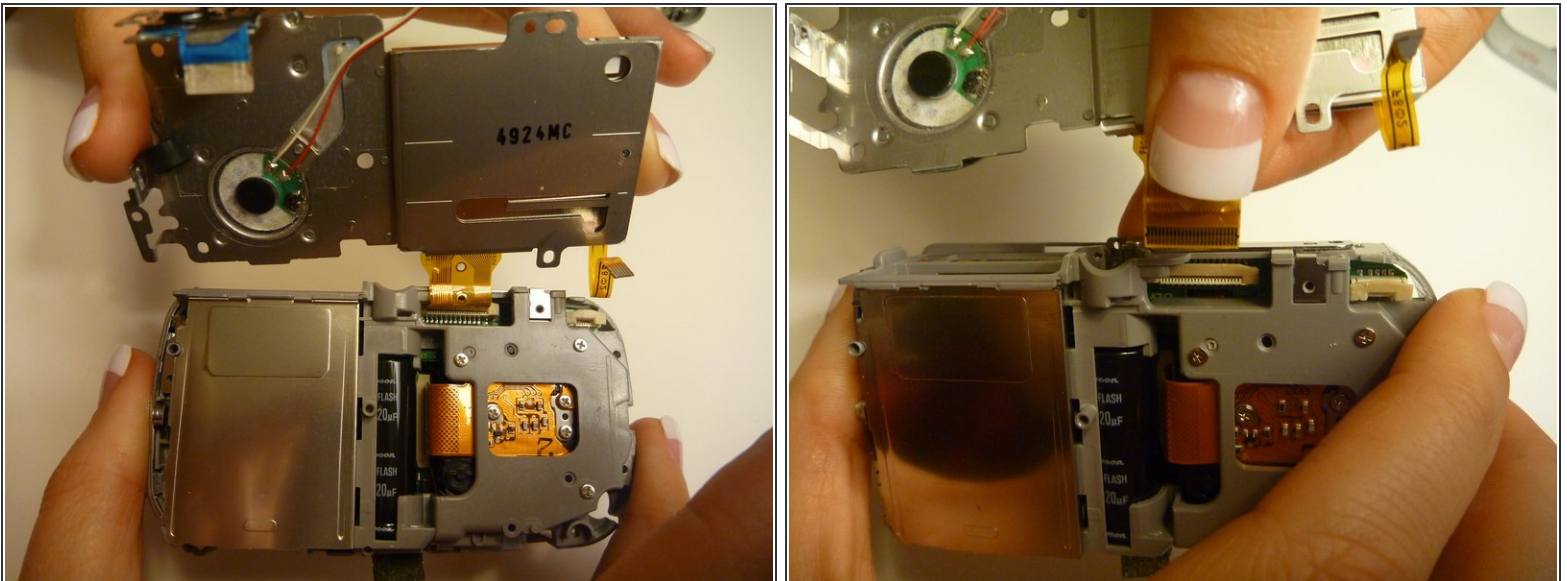
- Flip Camera to the bottom side as shown.
- Pull and wriggle the thin yellow wiring tape to detach it from the rest of the camera, while leaving it attached to the LCD screen.

Step 17



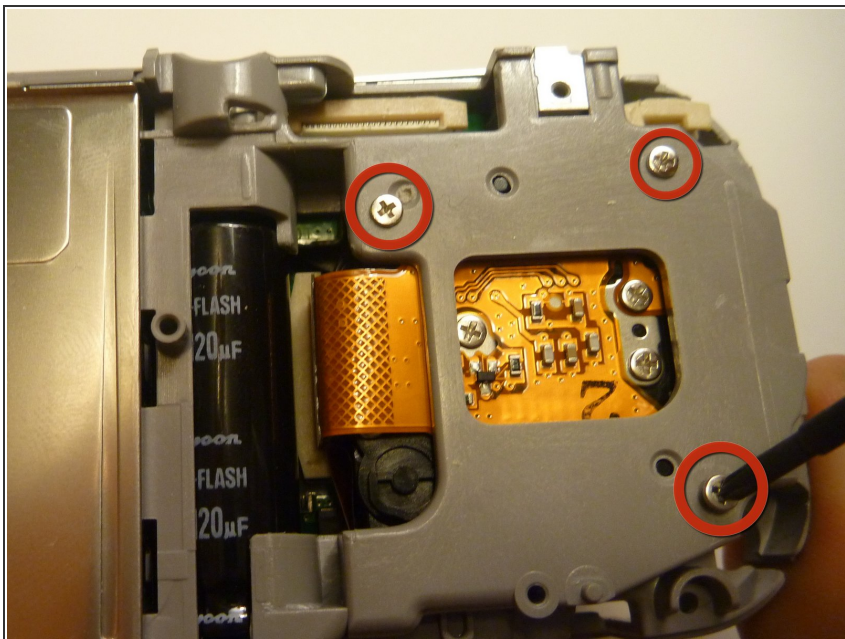
- Flip camera so the front is facing you.
- Locate speaker in upper right hand corner.
- Gently lift with tweasers.
- Feed wiring through designated spot so that it is no longer connected to the camera.

Step 18



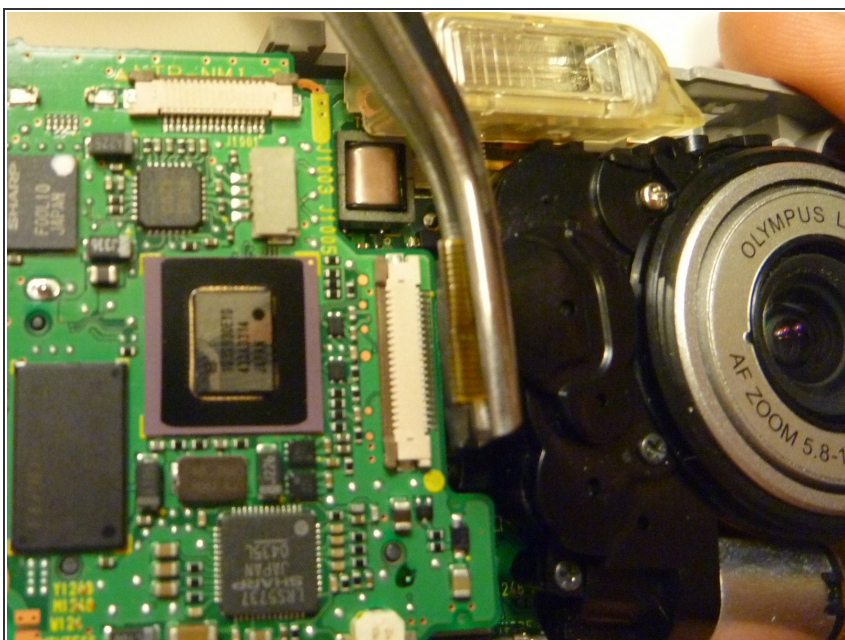
- Lift the LCD screen so the thick yellow wiring is the only thing attaching the LCD screen to the camera.
- Gently pull the thick yellow wiring out by using the forefinger and thumb.

Step 19 — Lens



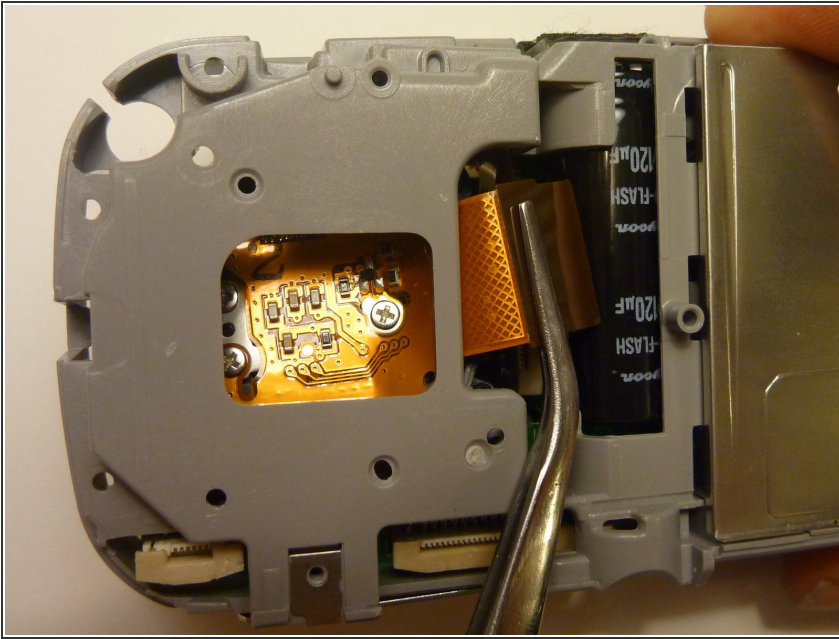
- Flip camera so you are looking at the back.
- Remove the 3 screws from the rear of the camera behind the lens.

Step 20



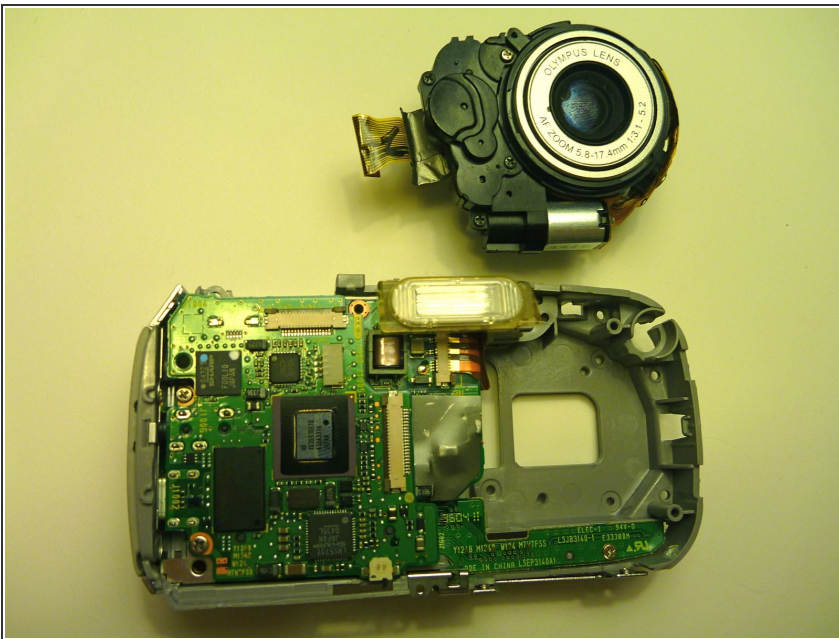
- Flip camera so the front lens is facing up.
- Unplug lens from logic board.

Step 21



- Flip camera over so the lens is facing down and the back of the camera is facing you.
- Gently pull back on the wire that connects logic board to lens assembly so it is no longer connected.

Step 22



- Flip camera so the front is facing you.
- Carefully lift lens assembly out of camera.

To reassemble your device, follow these instructions in reverse order.