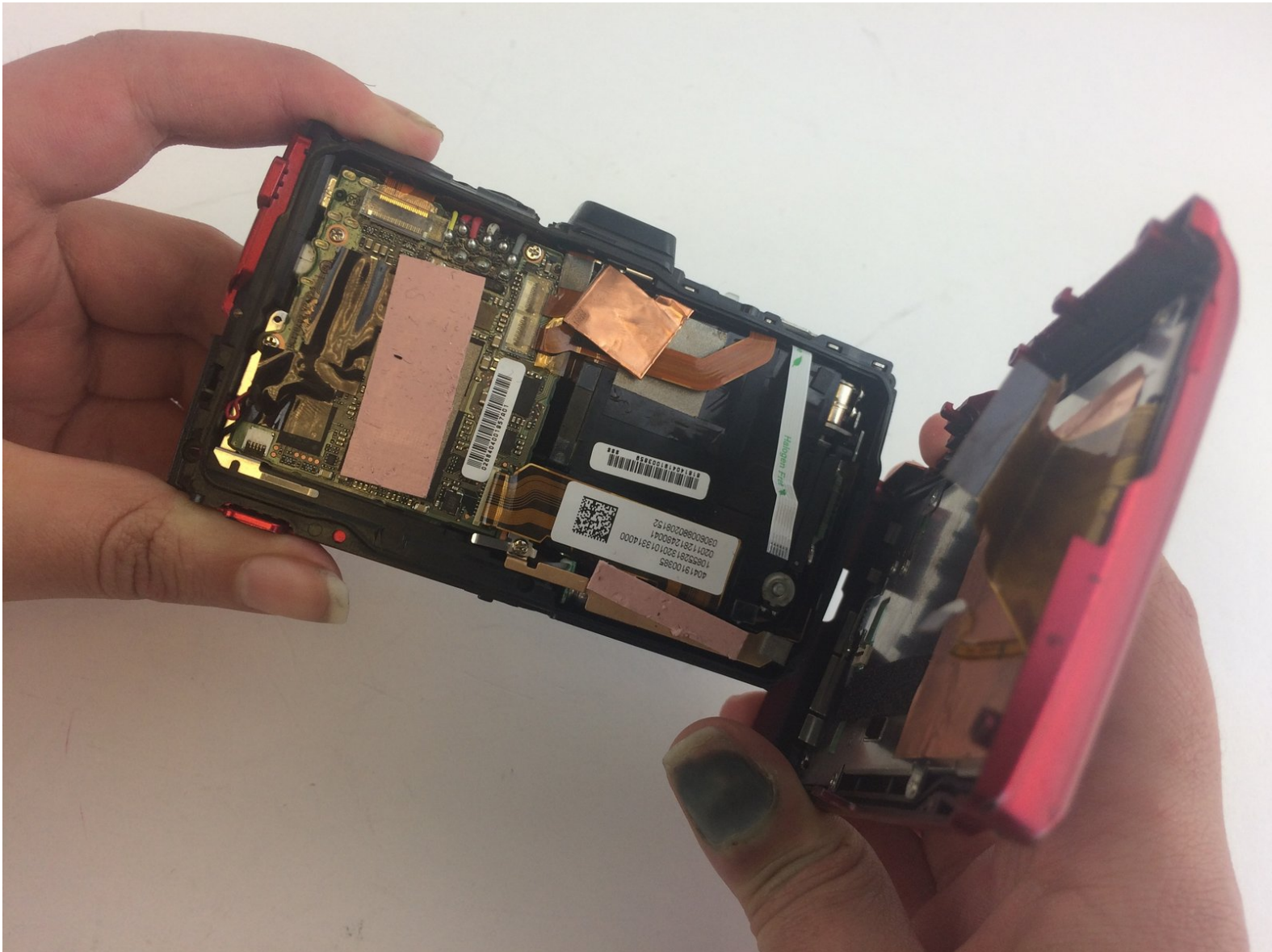




# Olympus Digital Camera TG-3 Shutter Button Replacement

This guide will provide detailed instructions for removing the back case of the device.

Written By: Natalia Morales



## INTRODUCTION

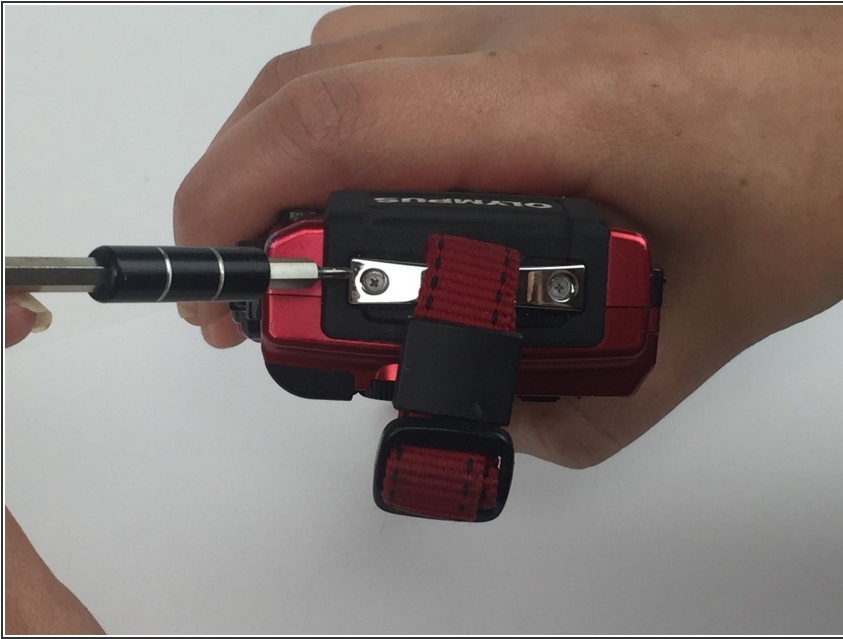
This guide requires you to handle sharp metal objects. Proceed with caution. To avoid misplacing the screws hold them in place with masking tape. Make sure your hands are clean and dry before they come in contact with the internal parts of the camera.



### TOOLS:

- [iFixit 6 Inch Metal Ruler](#) (1)
  - [Phillips #000 Screwdriver](#)—(if iPhone has external Phillips screws) (1)
-

## Step 1 — Front Case



- Locate the strap eyelet side of the camera and use the PH000 screwdriver to remove the two 5.3mm screws that hold the strap.

## Step 2



- Locate the side of the camera containing the HDMI port. Use the PH000 screwdriver to remove the 5.4mm screw located on the lower left side below the port.

## Step 3



- Using the PH000 screwdriver, remove the 3.8mm screw located inside the HDMI port.



## Step 4



- Locate the bottom section of the camera. Using the PH000 screwdriver, remove the two 4mm screws located towards the middle (near the battery compartment).

## Step 5



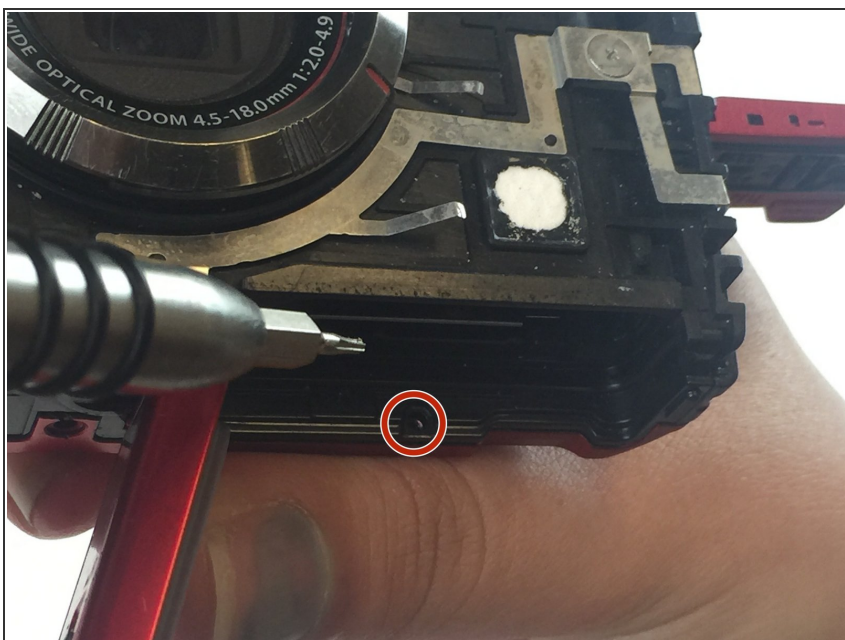
- Now you should be able to remove the front case easily using your hand.

## Step 6 — Back Case



- Using the PH000 screwdriver, remove the two 4mm screws located on the left side of the camera, under the strap holder.

## Step 7



- Use a PH000 screwdriver to remove the 3 mm screw located on the bottom of the battery compartment.

## Step 8



- Hold the device as shown in the picture. Using the PH000 screwdriver, remove the 9mm screw located on the upper left side of the camera.

## Step 9



- Use the PH000 screwdriver to remove the 7mm screw you'll find toward the lower left side of the camera.

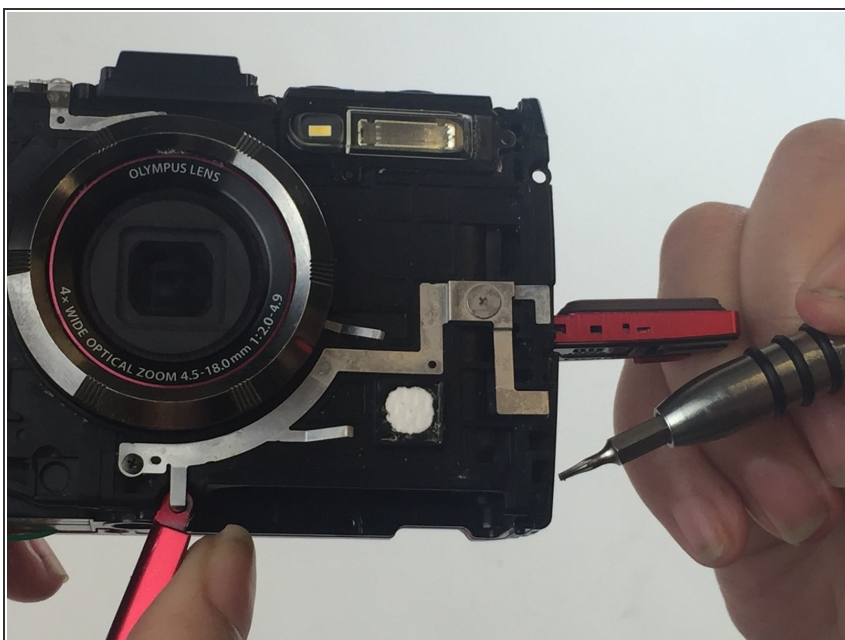


## Step 10



- Use a PH000 screwdriver to remove the 6mm screw on the upper right side of the camera, above the flash.

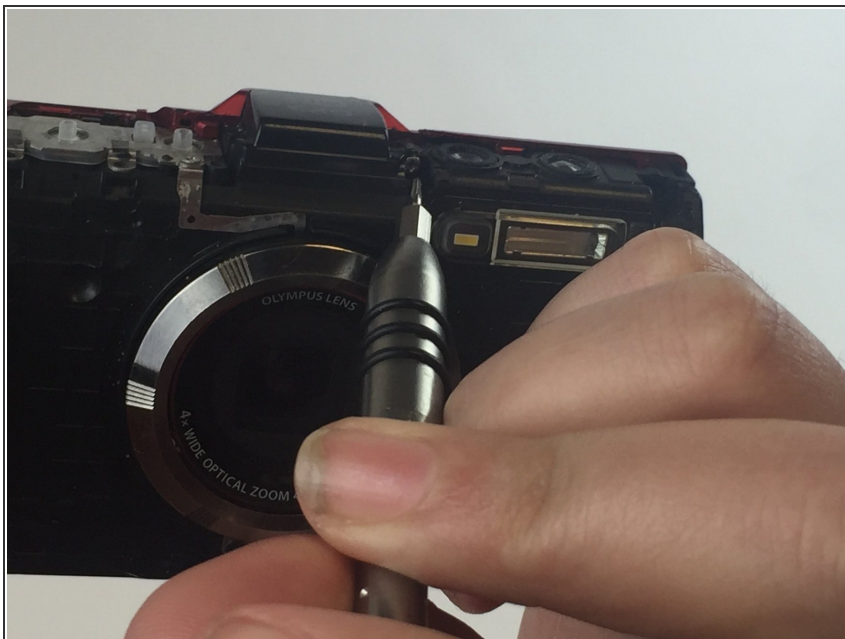
## Step 11



- Using the PH000 screwdriver, remove the 1.2 mm located on the lower right side of the device, towards the corner.

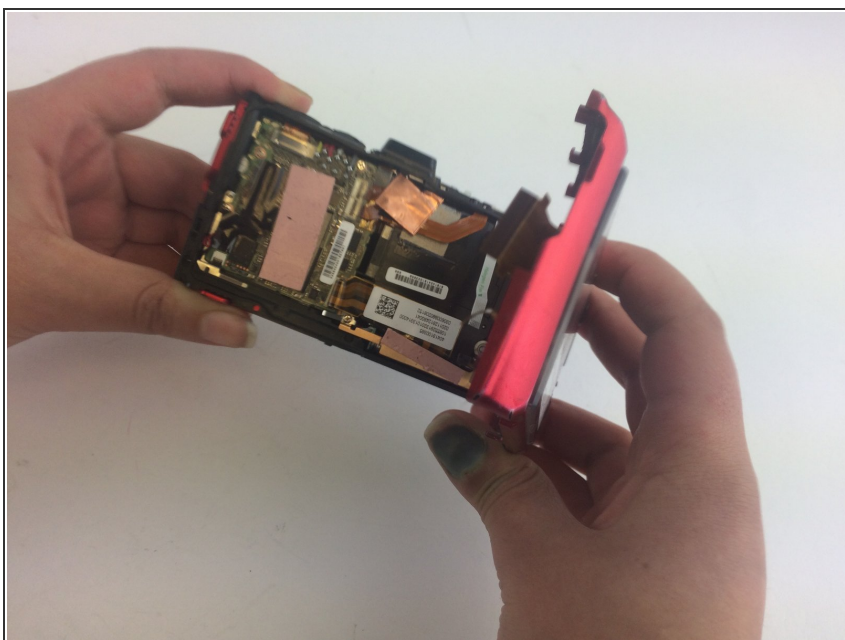


## Step 12



- Use the PH0000 screwdriver to remove the 7 mm located on the upper side of the camera, where the shutter and zoom bottoms are. You will find the screw towards the middle of this section.

## Step 13



- Remove the back case using your hand.

To reassemble your device, follow these instructions in reverse order.