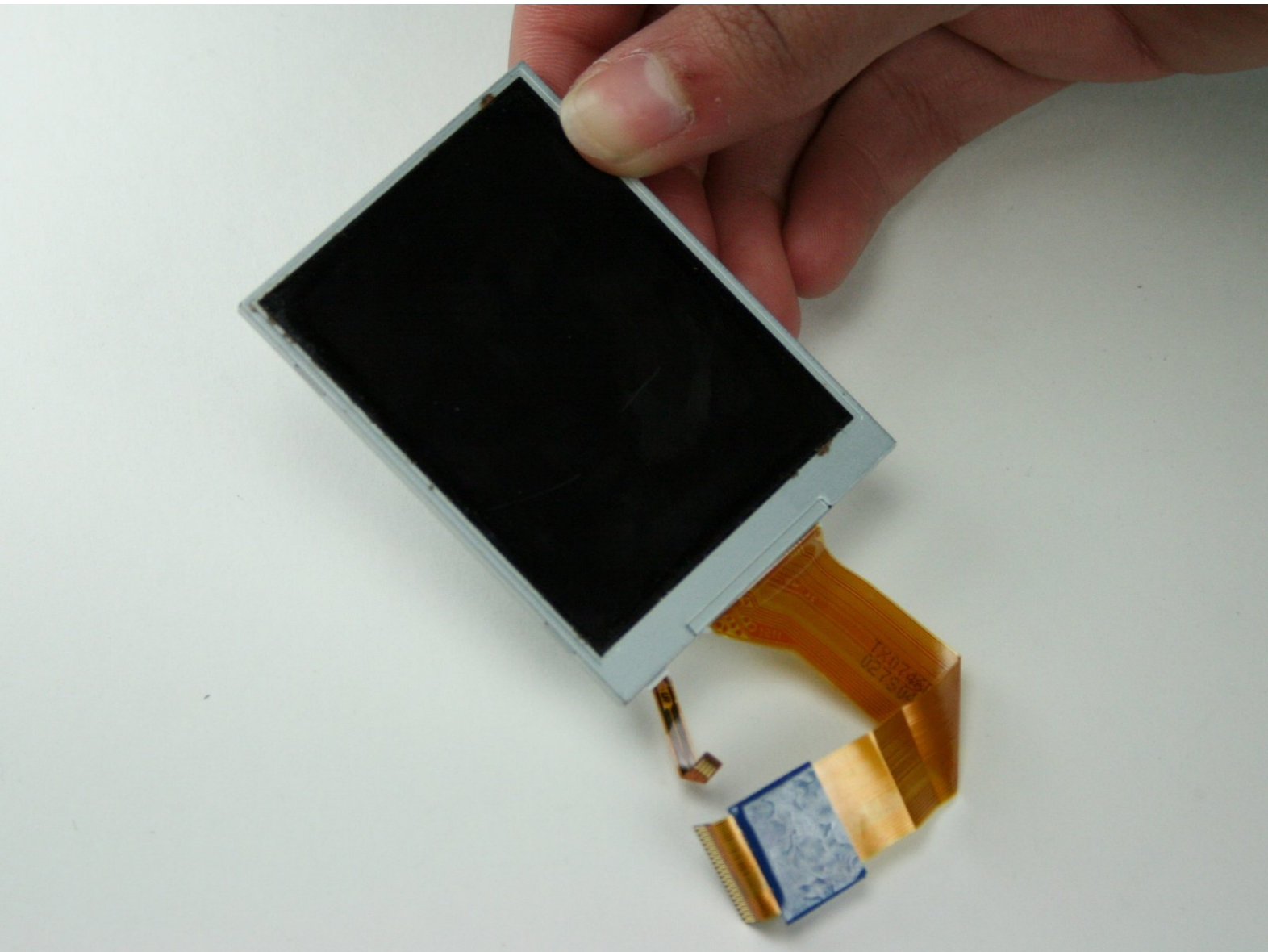




Olympus E-PL1 LCD Screen Replacement

This is how to remove and replace the LCD screen on the back panel.

Written By: Jeffery Smith



INTRODUCTION

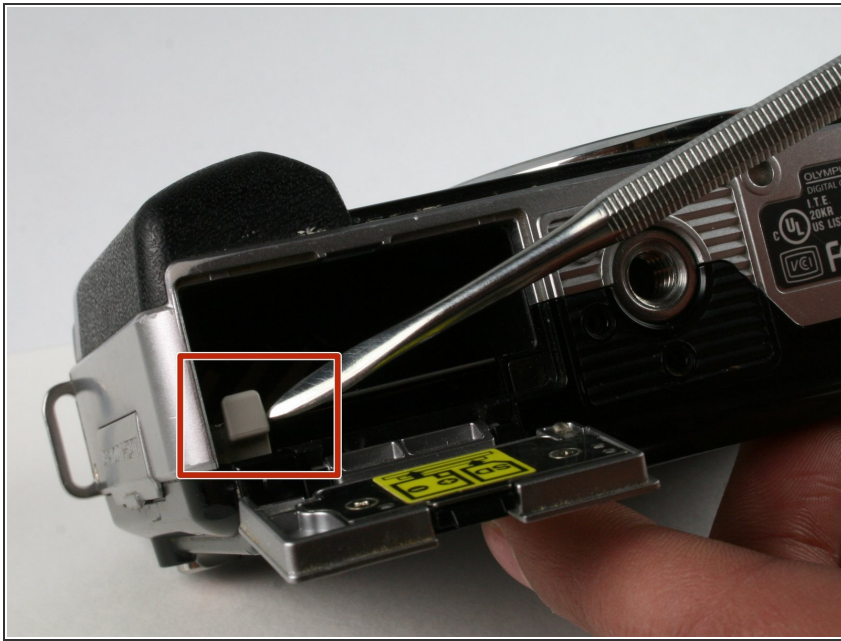
This guide will show how to replace the LCD display screen on the back panel.



TOOLS:

- [Phillips #000 Screwdriver](#) (1)
 - [Tweezers](#) (1)
 - [Spudger](#) (1)
 - [Metal Spudger](#) (1)
-

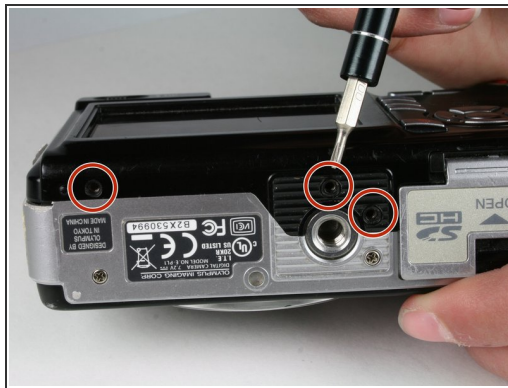
Step 1 — Opening The Case



- Push the gray tab down, using a spudger if necessary, and the battery will come out.

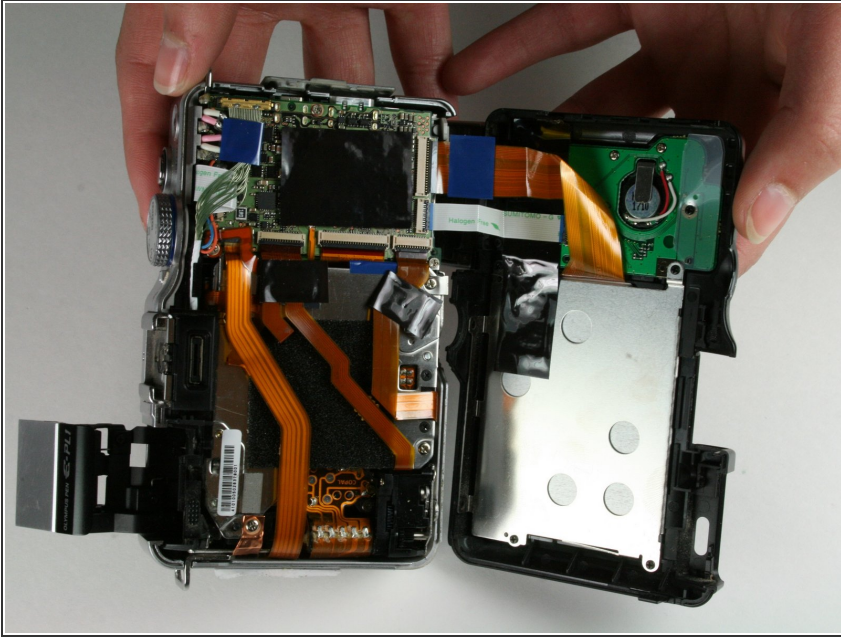
⚠ Failure to remove the battery prior to disassembly can result in harm.

Step 2



- There are a total of six screws that must be removed using the the #000 Philips screwdriver.
- As per picture one: there is one 4.9 mm Philips head screw on the left side of the camera.
- As per picture two: on the bottom of the camera, there are three 3.4 mm Philips head screws; these are located on the darker area of the case.
- As per picture three: there are two 5.3 mm Philips head screws on the right side, one is beneath the USB cover.

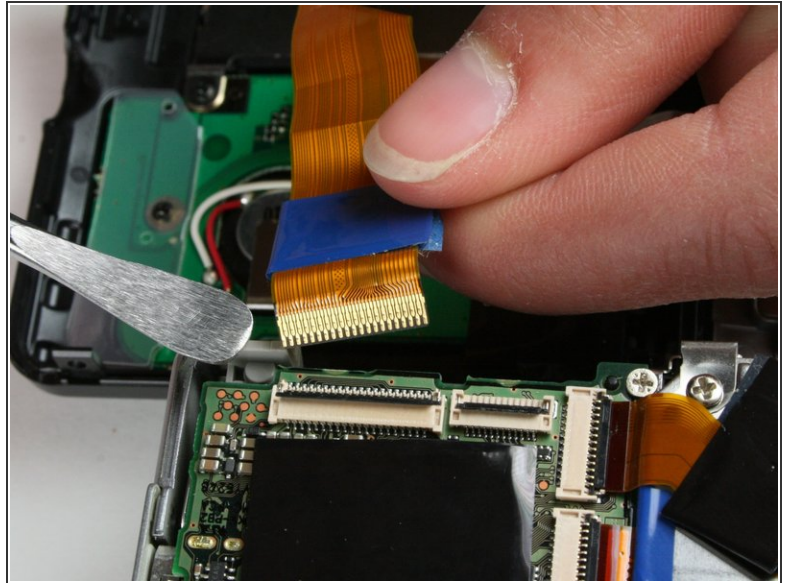
Step 3



- Open the case by peeling off the back panel.

 **Pull the case apart gently so that the ribbon connector will not tear.**

Step 4



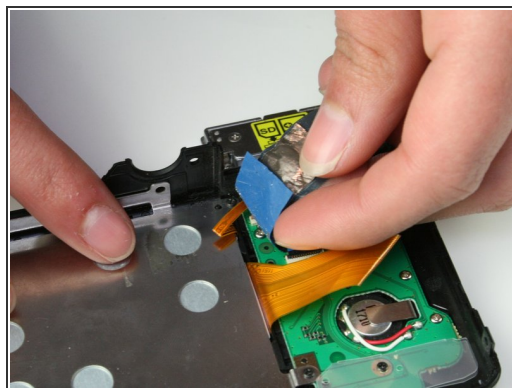
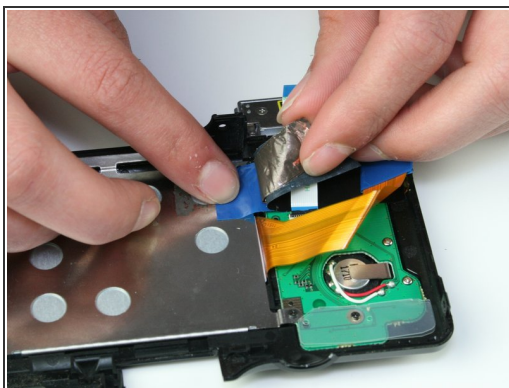
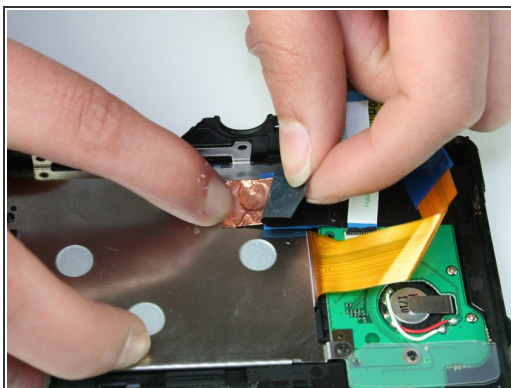
- Disconnect the two ribbon cables as shown in picture one.
- ⚠ Avoid using metal pry tools, as shown in the photo, on internal electronic components, as it can cause a short and damage the device. Use an ESD-safe tool such as a standard nylon spudger.
- ℹ To disconnect a ribbon cable, use a spudger to lift the black tab then pull the ribbon out. This works the same for all ribbon cables.

Step 5



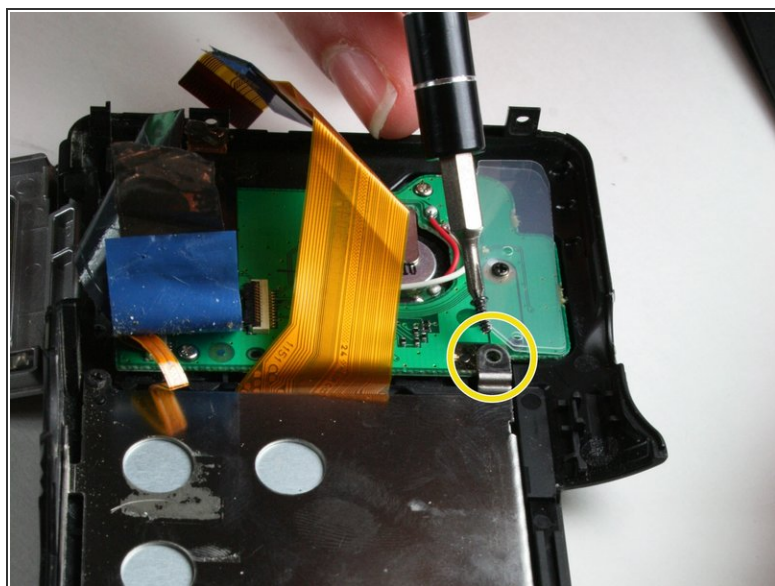
- The back panel has now been removed.

Step 6 — LCD Screen



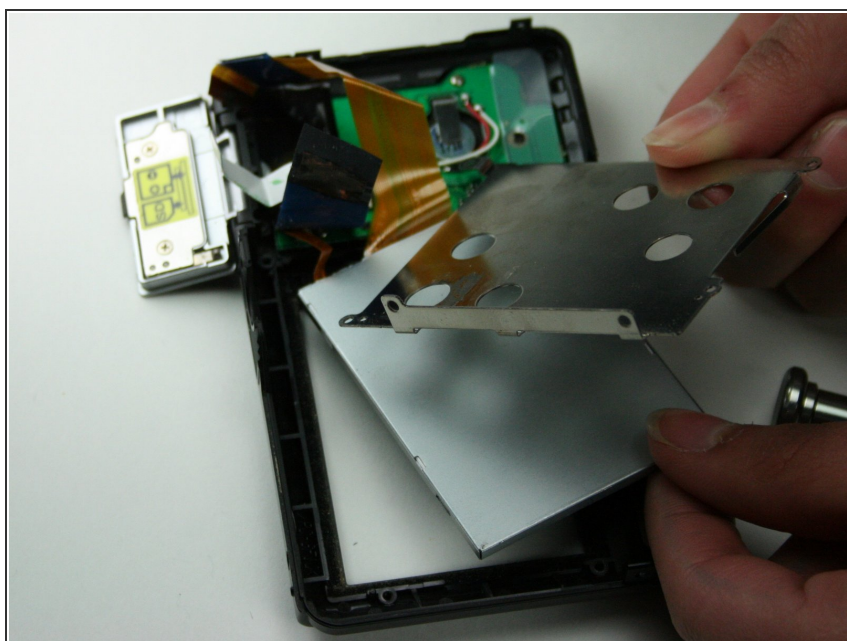
- As per picture one: peel back the black strip.
- As per picture two: peel back the Copper strip.
- As per picture three: peel back the blue tape.

Step 7



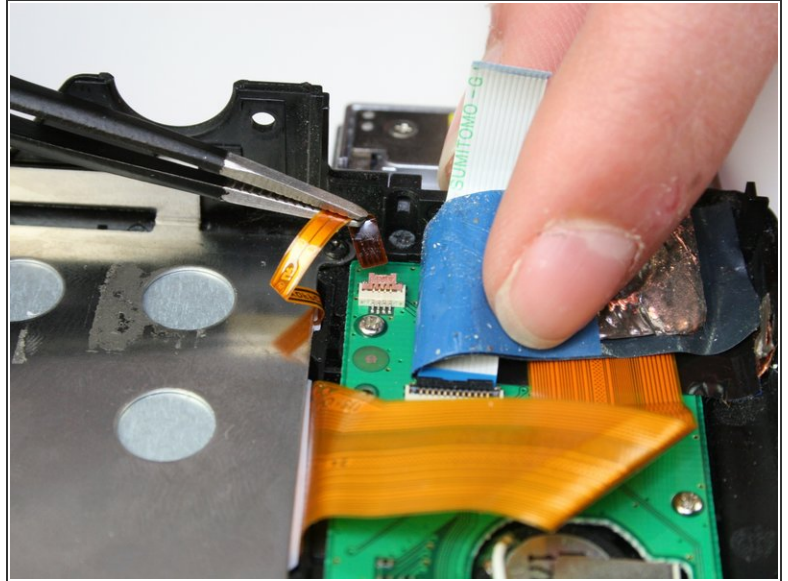
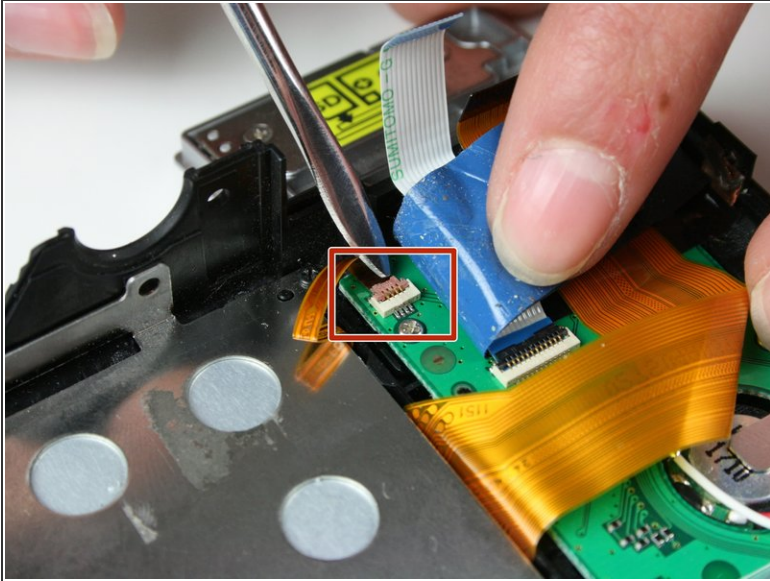
- There are four screws that need to be removed using the #000 Philips screwdriver.
- Remove the three 3.4 mm screws on the silver panel.
- Now remove the 4.3 mm screw located on the green board.

Step 8



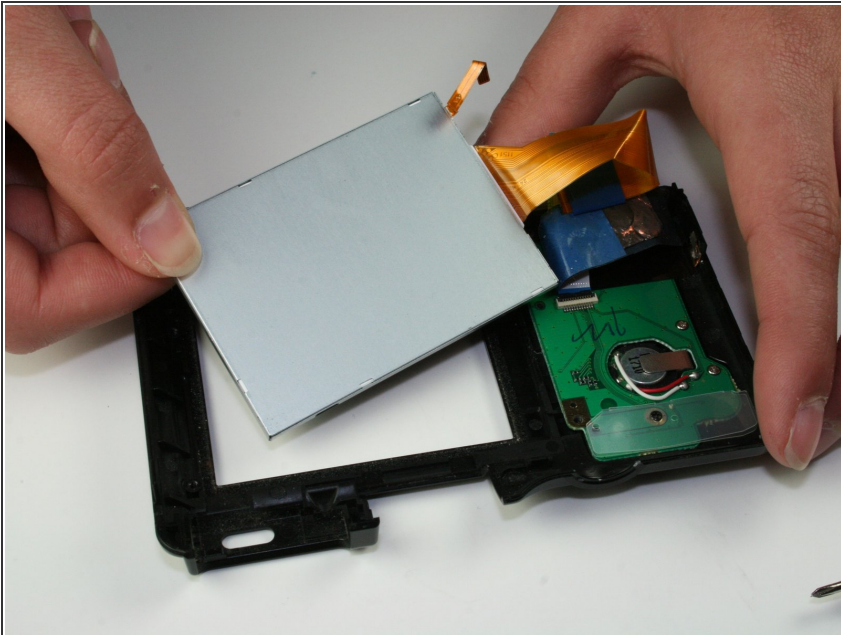
- Lift out and remove the metal plating over the LCD screen.

Step 9



- Use a spudger to lift the brown lock tab.
 - ⚠️ Avoid using metal pry tools, as shown in the photo, on internal electronic components, as it can cause a short and damage the device. Use an ESD-safe tool such as a standard nylon spudger.
- Using tweezers, lift the ribbon cable from the brown lock tab.

Step 10



- Lift out the LCD Screen.

To reassemble your device, follow these instructions in reverse order.