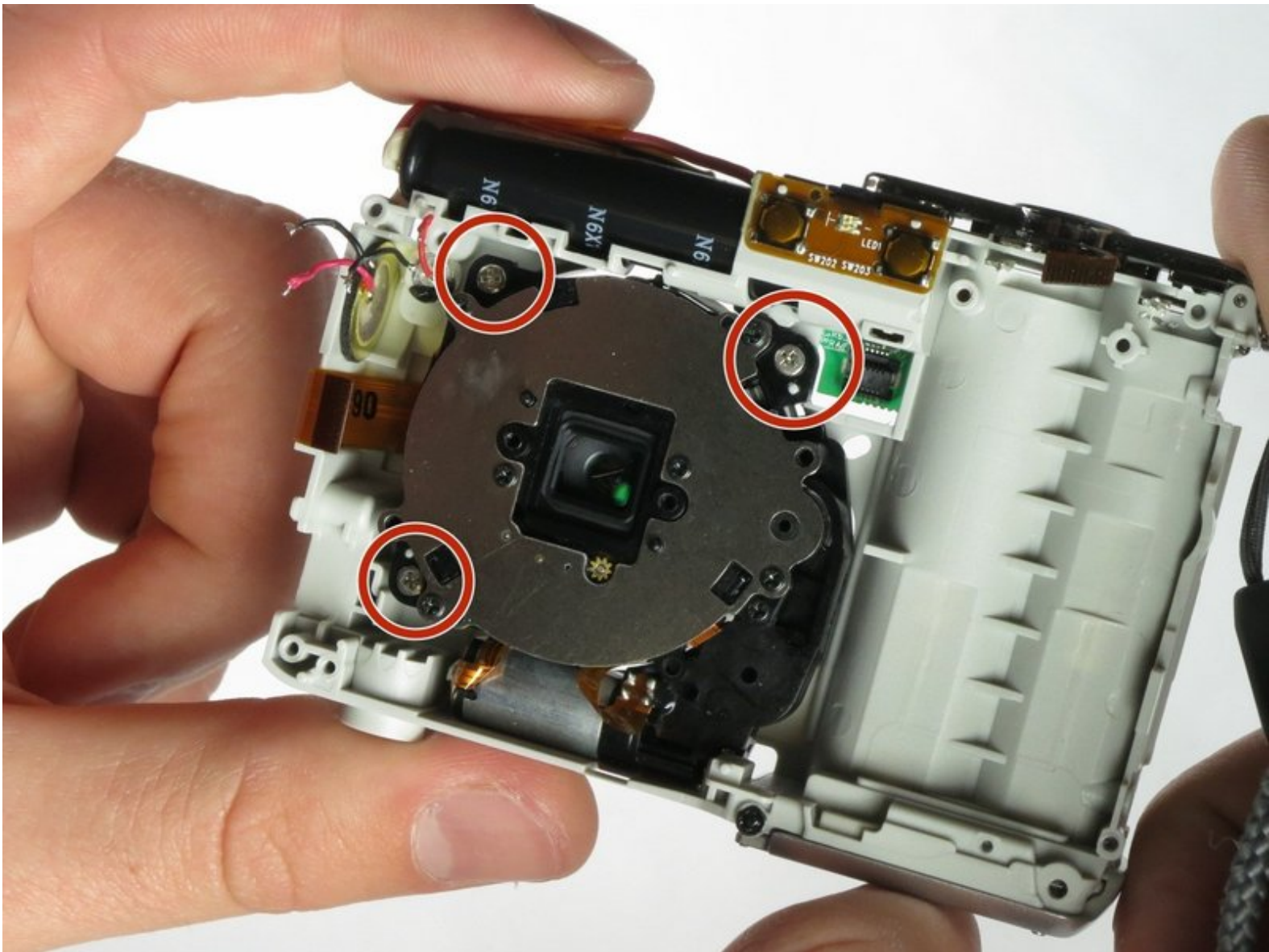




Olympus FE-170 Lens Replacement

This guide will show you how to replace the lens assembly in your Olympus FE-170

Written By: CCrane

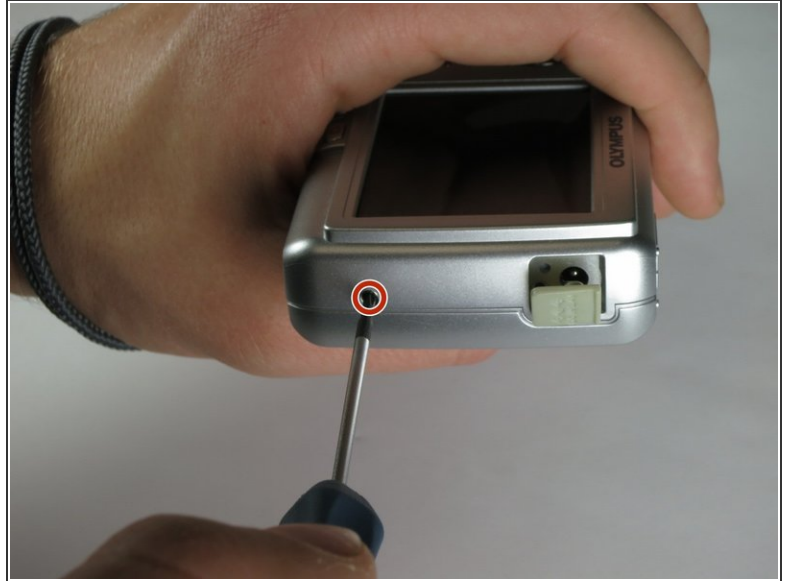




TOOLS:

- [Phillips #00 Screwdriver](#) (1)
 - [Soldering Workstation](#) (1)
 - [Spudger](#) (1)
 - [Desoldering Braid](#) (1)
-

Step 1 — Casing



- Remove the 2 exposed screws on opposite sides of the camera. Turn the screws counter-clockwise to remove.

Step 2



- Open the battery compartment and remove the 2 screws in the top of the opening.

Step 3



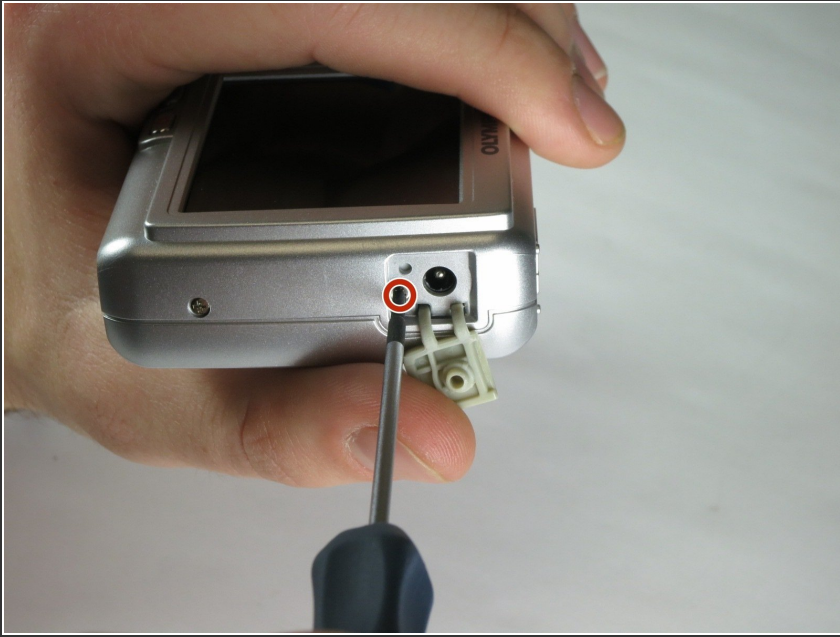
- Remove the 2 exposed screws on the bottom of the camera.

Step 4



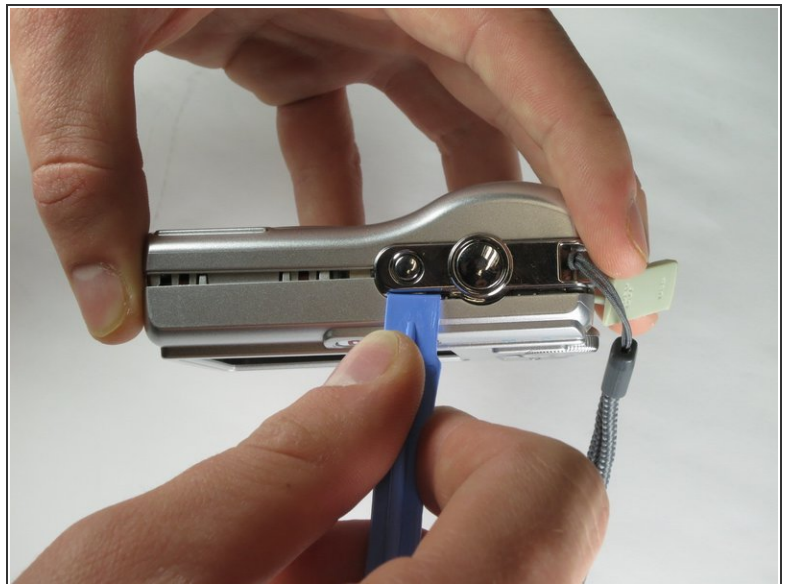
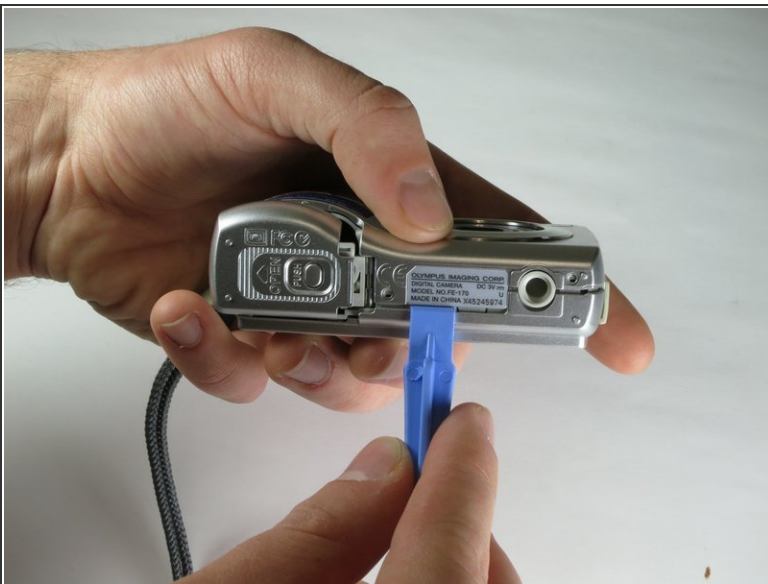
- Uncover the mini-usb dock on the side of the camera and unscrew the screw next to the flap joint

Step 5



- Uncover the video cable port on the side of the camera and remove the screw

Step 6



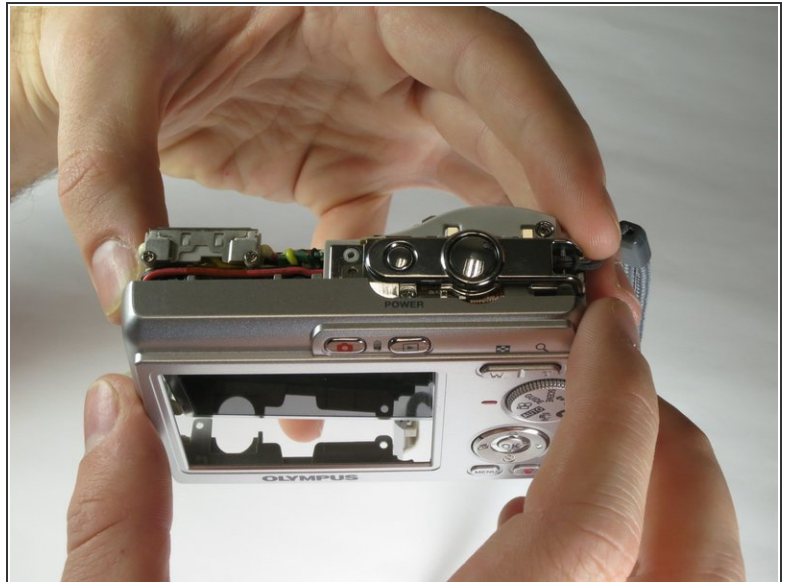
- Carefully slip the head of the plastic opening tool under the panels by finding the crack between the panels. Lightly apply pressure in the shown places at the top and bottom of the camera.

Step 7



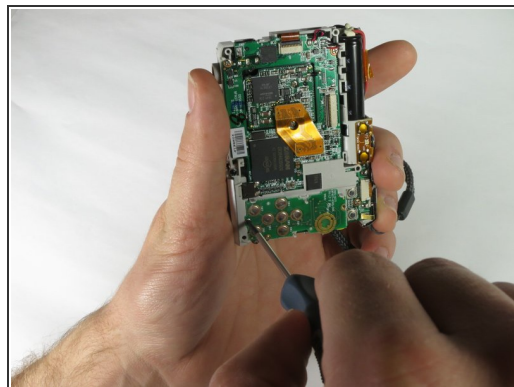
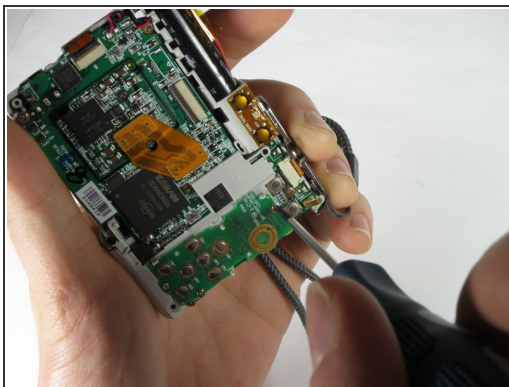
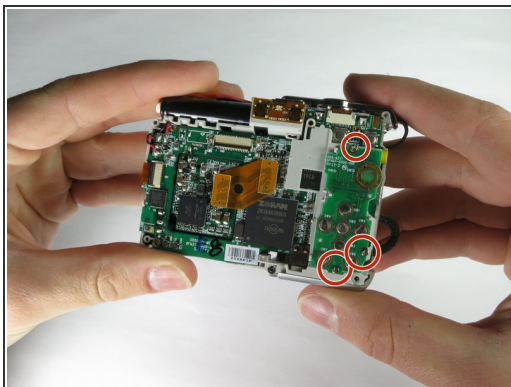
- Loosen the panels on the sides of the camera in the shown places by slipping the plastic opening tool in the crack between the panels. Lightly apply pressure.

Step 8



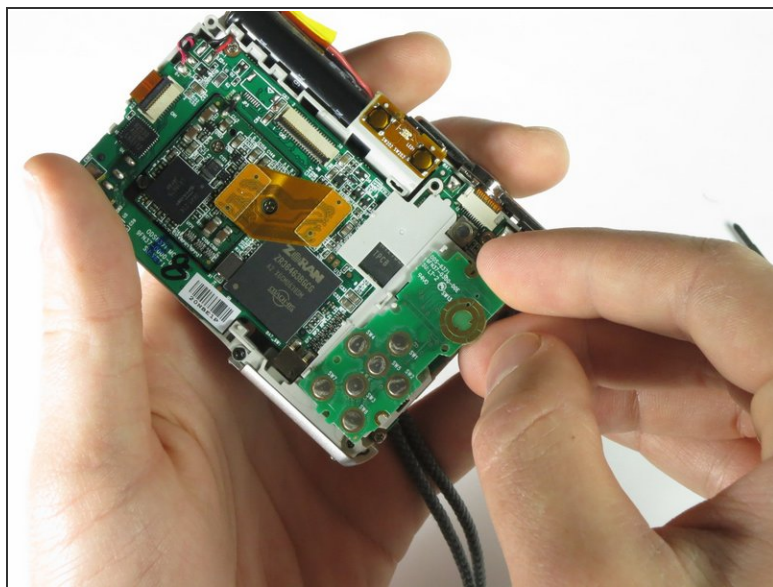
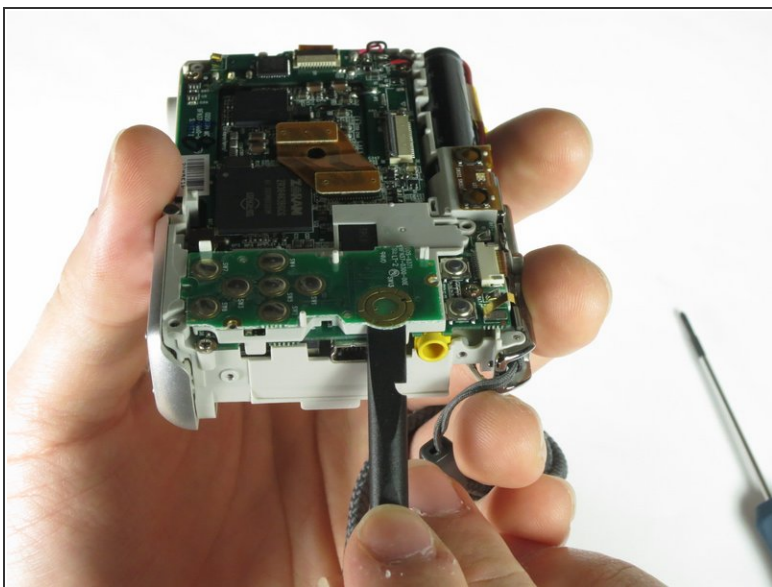
- Ensure that the panels have been loosened. Carefully use hands to pull back and remove the panels.

Step 9 — Motherboard



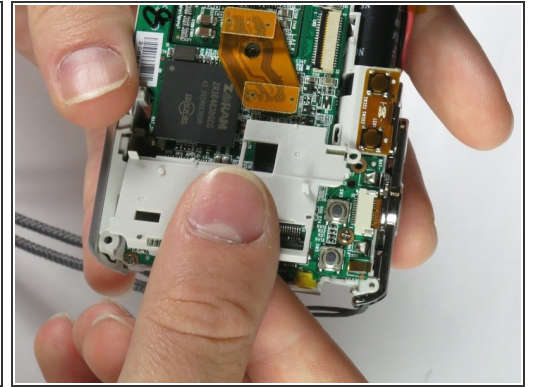
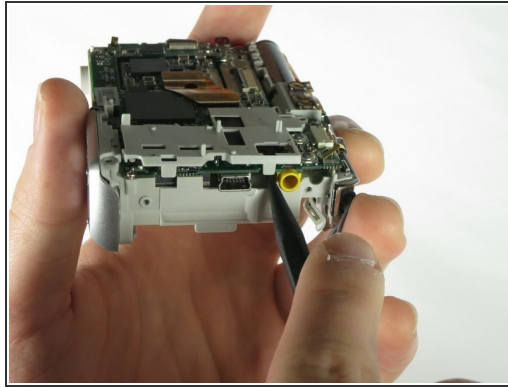
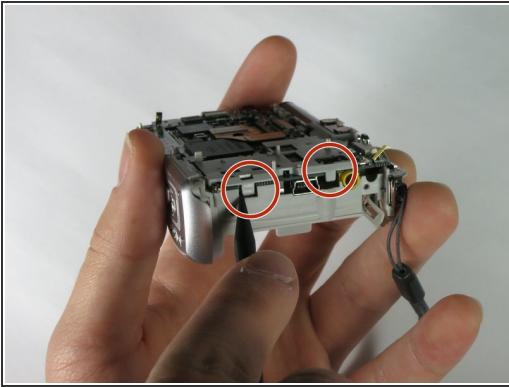
- Remove the three screws holding the outer circuit board in place.

Step 10



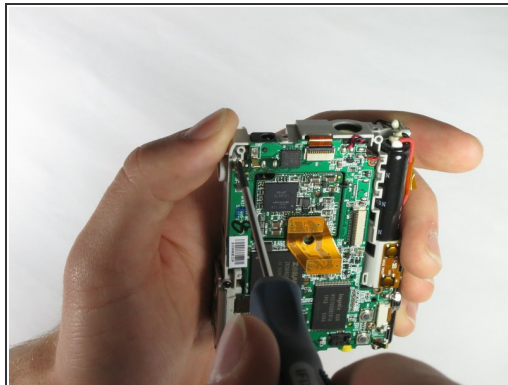
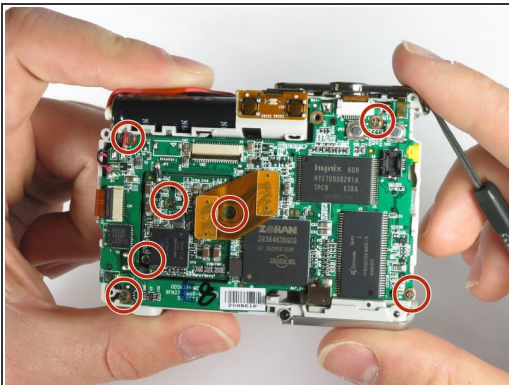
- Use the spudger or your fingers to remove the outer circuit board from the camera.

Step 11



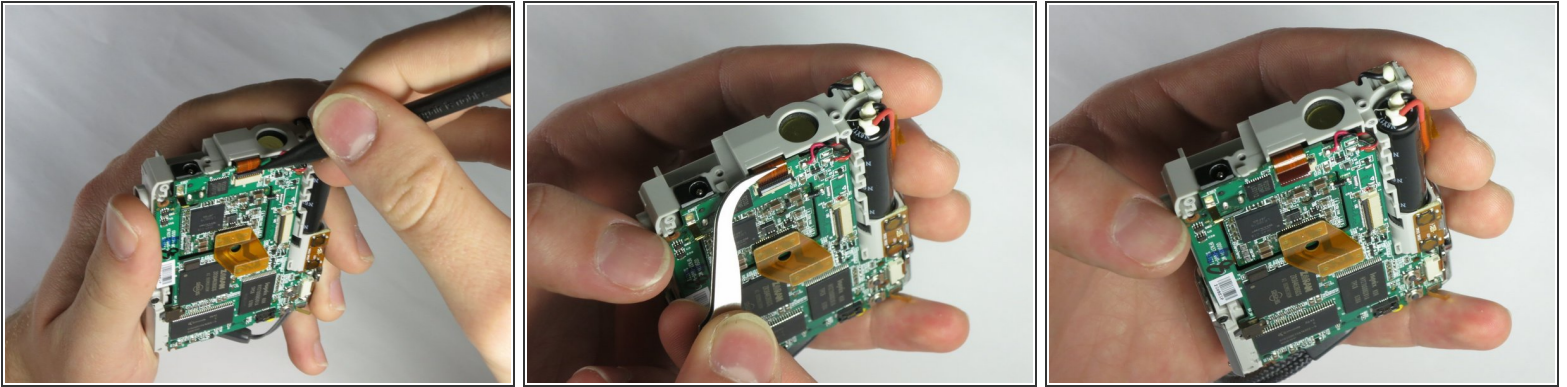
- Use the spudger to pull the plastic tabs shown off of the motherboard.
- Gently pull the plastic piece off of the motherboard.

Step 12



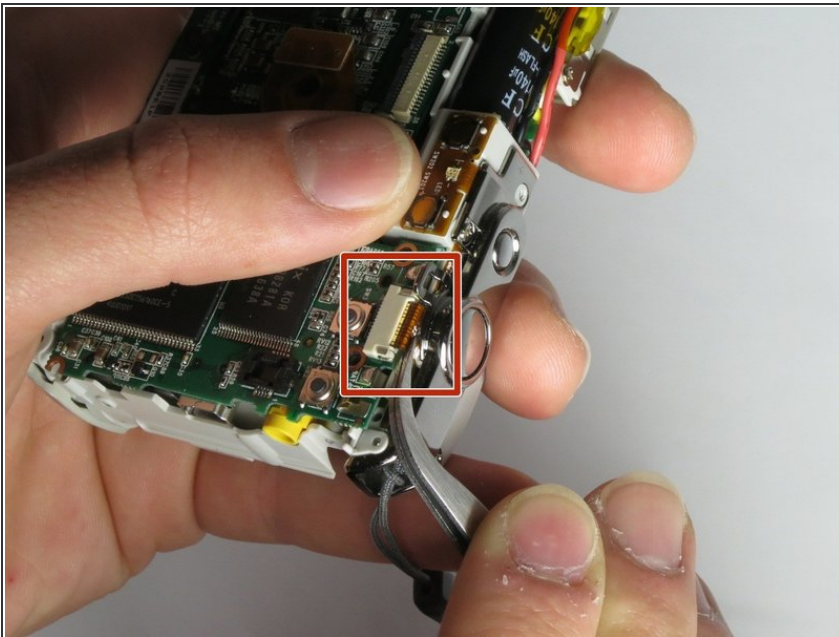
- Remove the screws shown using the 00 philips screwdriver.

Step 13



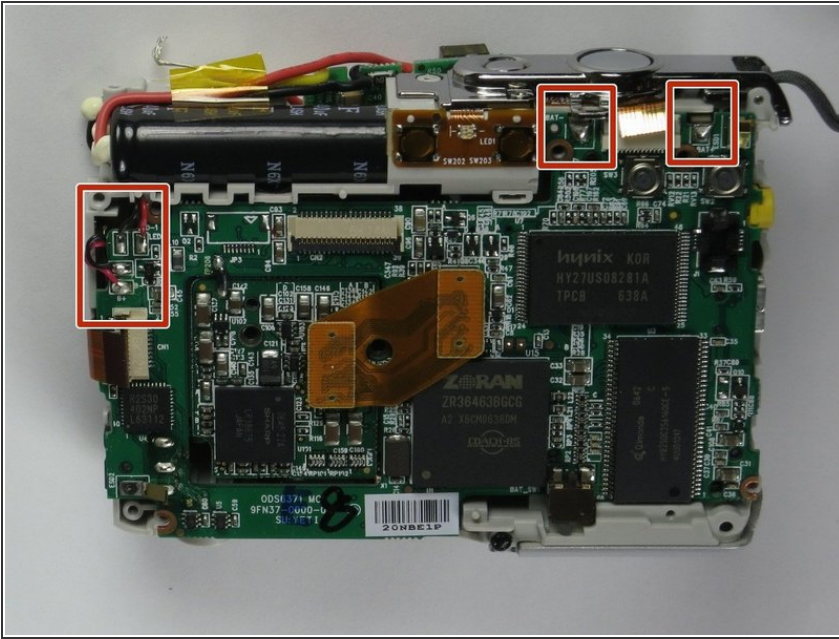
- Use the pointed end of the spudger to release the ribbon cable clasp.
- Remove the ribbon cable from the port using the tweezers.

Step 14



- Use the tweezers to remove the ribbon cable near the shutter button.

Step 15

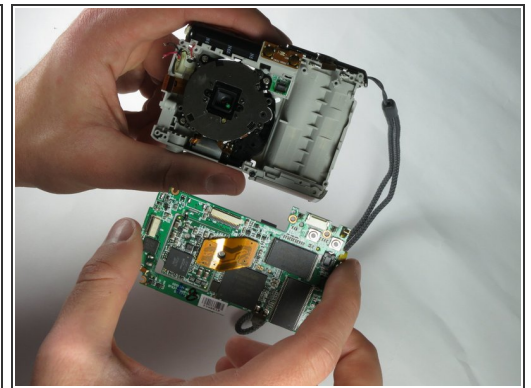
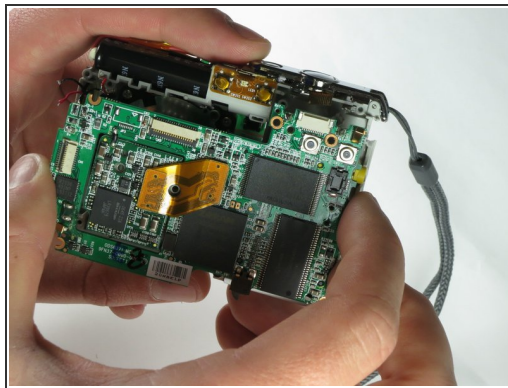


- Next unsolder the connections shown.

ⓘ See our [soldering guide](#) for help on how to unsolder

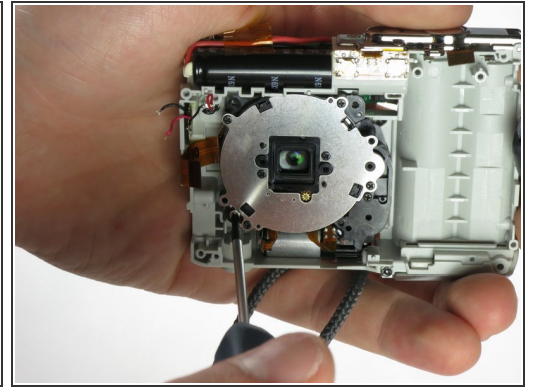
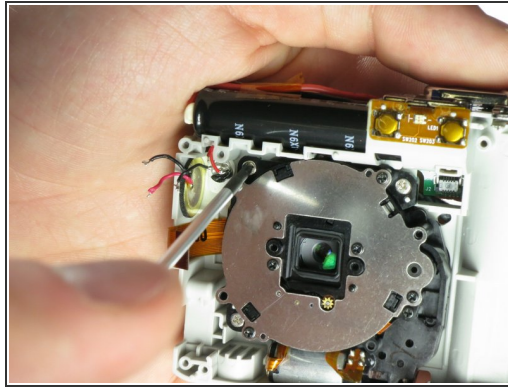
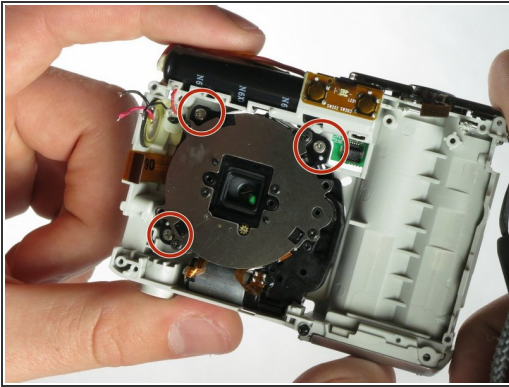
⚠ Soldering irons are hot, and will also heat the connection wire. Using the tweezers will protect your fingers from the heat.

Step 16



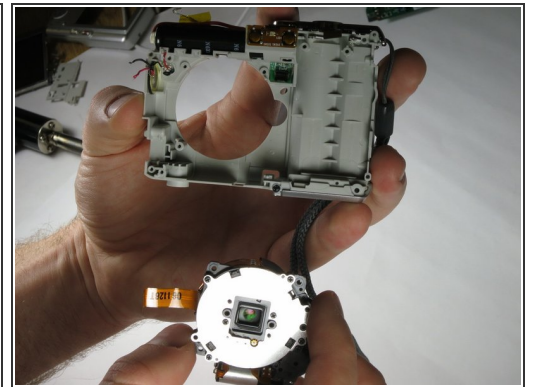
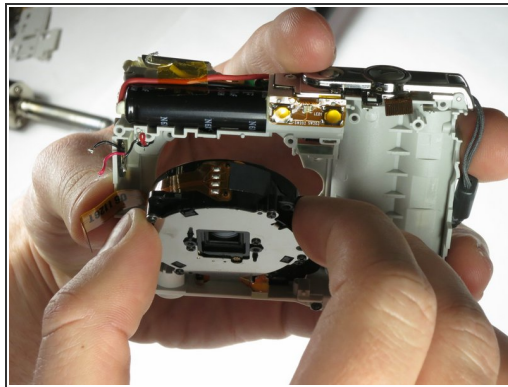
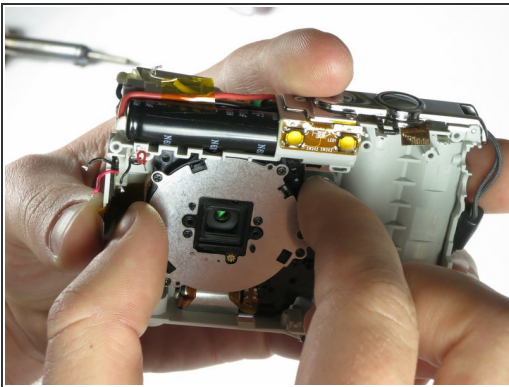
- Gently pull the motherboard (from the bottom first) away from the device.

Step 17 — Lens



- Remove the 3 screws holding the lens assembly in place.

Step 18



- Gently remove the lens assembly by pulling on the top of the assembly first, then removing from the device.

To reassemble your device, follow these instructions in reverse order.