



# Olympus OM-D E-M10 Mark II SD Card Replacement

Replace the SD card of your Olympus OM-D E-M10 II camera to save your pictures and videos.

Written By: Channing Pezet

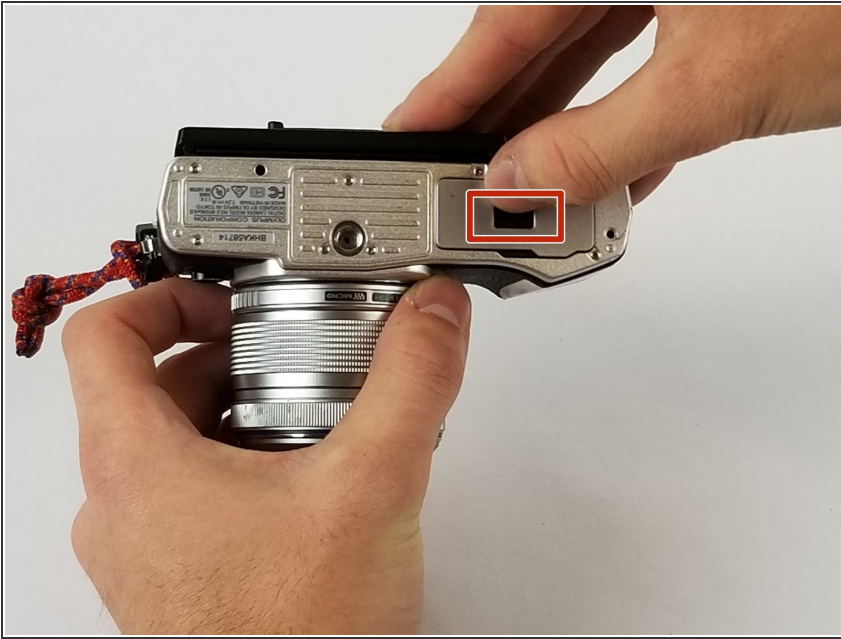


## INTRODUCTION

If your camera does not have an SD card or your SD card no longer has any memory in it, then it will need to be replaced. Use this guide to ensure you are properly removing and replacing your SD card into your camera. **Make sure your SD card is compatible with the Olympus OM-D E-M10 II before you begin.**

[Olympus has a compatibility table for SD / SDHC / SDXC memory cards can be found here...](#)

## Step 1 — Battery



- Open the battery door latch by moving the black button in the direction of the arrow, towards the camera screen.
- ☑ To ensure that the battery door is properly in the closed position, listen for an audible click.

## Step 2



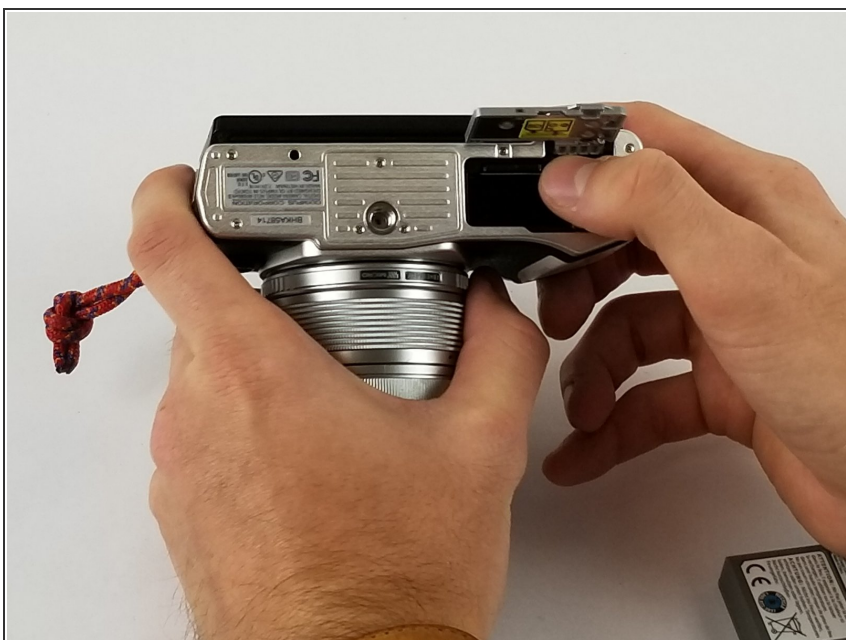
- Move the dark red latch towards the direction of the camera lens to release the battery from the camera.
- ☑ Make sure the dark red latch blocks the battery from moving after placing the battery in the camera during reassembly.

### Step 3



- You can now remove the battery from the body of the camera and begin reassembly with your new battery.

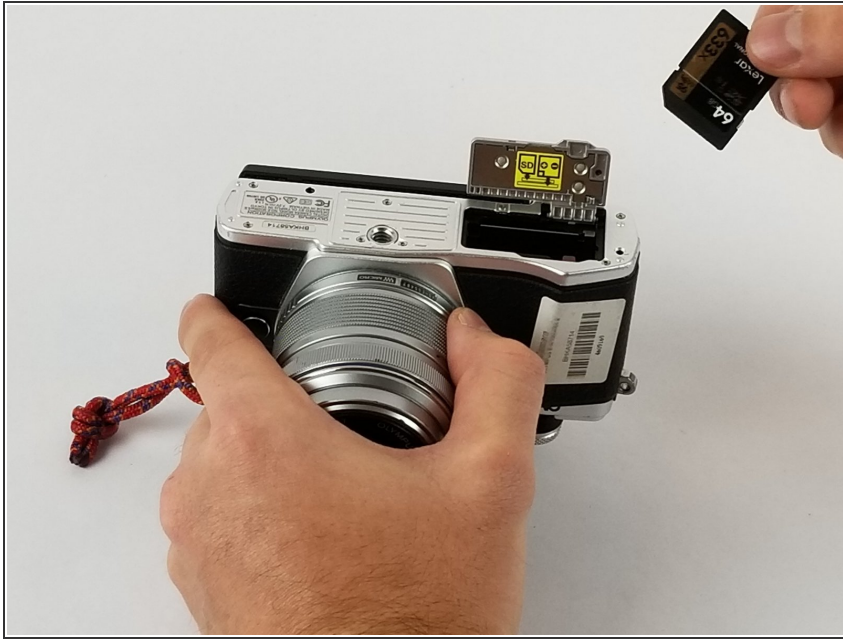
### Step 4 — SD Card



- Find the SD card located near the hinges of the door and gently press down on it so that it becomes free.



## Step 5



- Remove the SD card from the camera by grabbing it with your fingers and lifting away from the camera.

To add your new SD card to your device, follow these instructions in reverse order.