



# Olympus Pen E-PL7 LCD Screen Replacement

This guide will show you how to remove the LCD from the Olympus Pen E-PL7

Written By: Kelsea Weber



## INTRODUCTION

Is your LCD Screen cracked or unresponsive? Use this guide to replace it and get back to taking awesome photos.

We highly suggest you use a [magnetic project mat](#) or an [organization tray](#). This camera has **many** different types of screws and keeping them organized is key to proper reassembly.




### TOOLS:

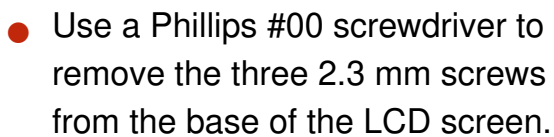
- [Tweezers](#) (1)
  - [Phillips #00 Screwdriver](#) (1)
  - [Magnetic Project Mat](#) (1)
-

## Step 1 — Battery



- Turn the camera upside down.
  - Push the grey tab to the right to open the battery compartment.
  - Pull out the battery.
-  The battery is not shown in these photos.

## Step 2 — LCD Screen



### Step 3



- Fully extend the LCD assembly.

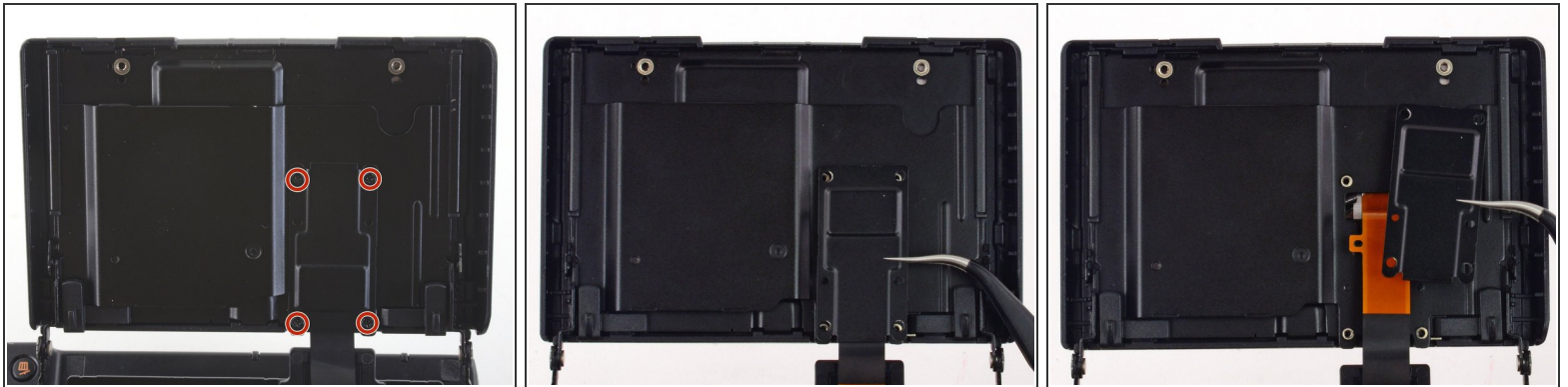


## Step 4



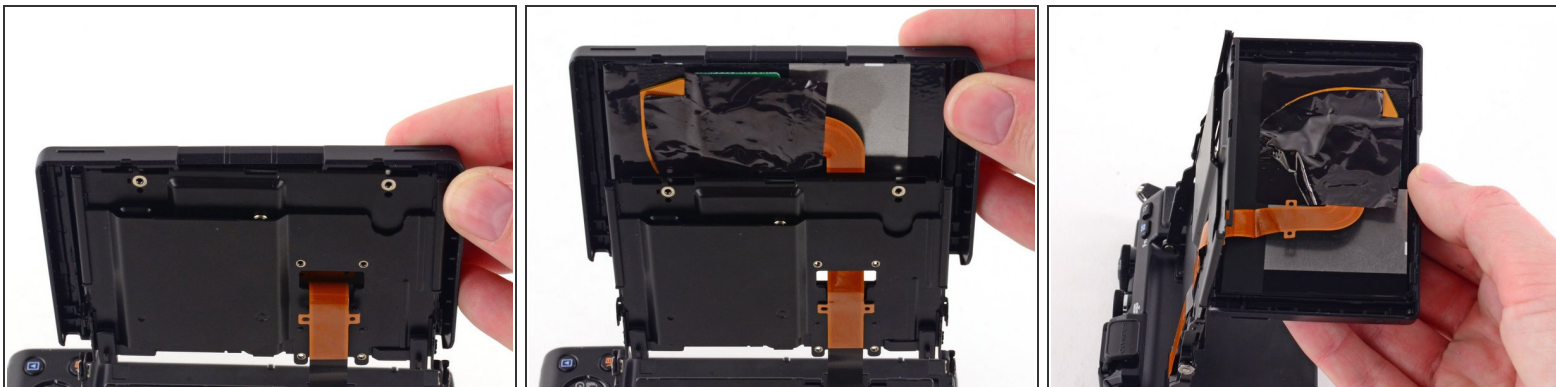
- Remove the two 2.2 mm Phillips screws located on the back of the LCD screen.
- Use tweezers to remove the top LCD bracket.

## Step 5




- Use a Phillips #00 screwdriver to remove the four 1.4 mm screws from the back of the LCD screen.
- Remove the LCD ribbon cable with a pair of tweezers.
- ⓘ The cover may fall off after the screws have been removed.

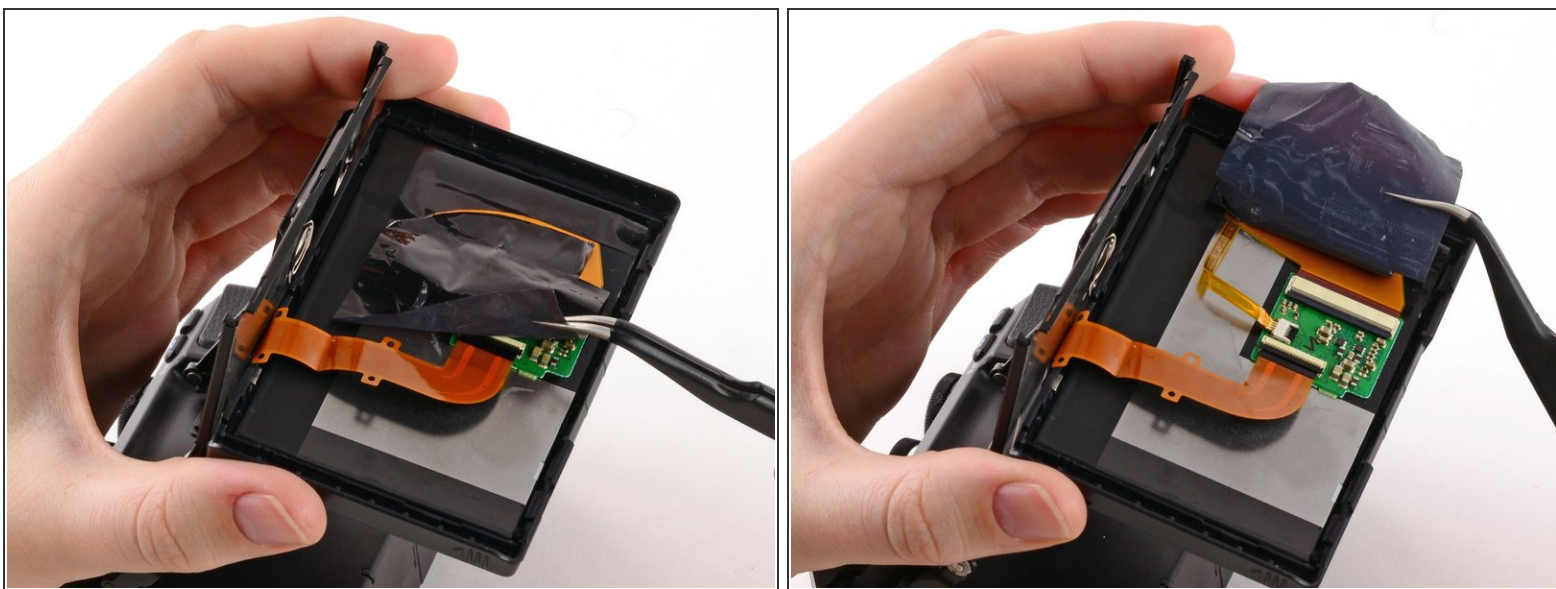
## Step 6



- Carefully lift the LCD screen up and away from the assembly.

 Do not attempt to fully remove the screen, as it is attached to the assembly by a ribbon cable.

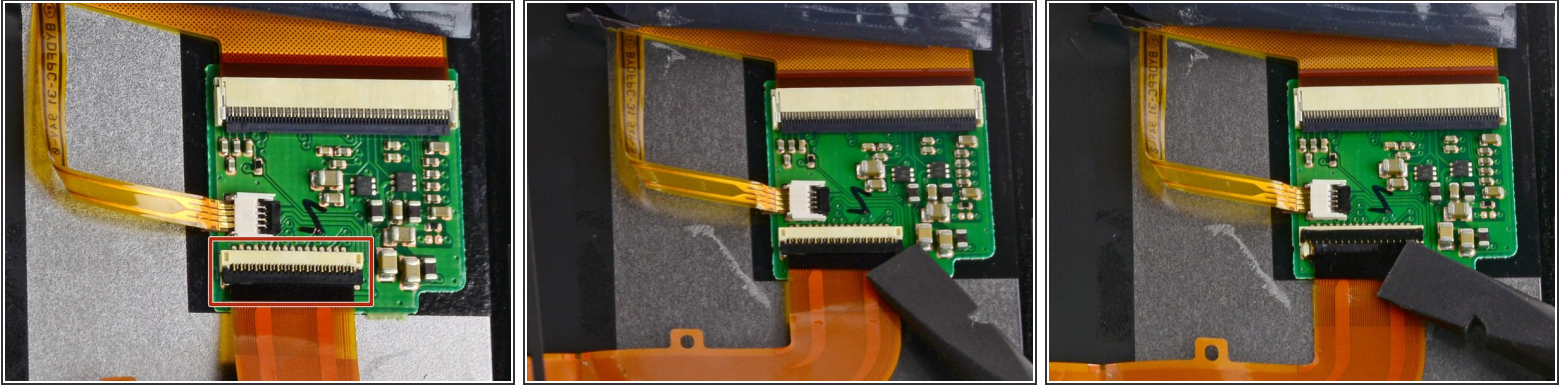
## Step 7



- Use tweezers to peel back the plastic cover.

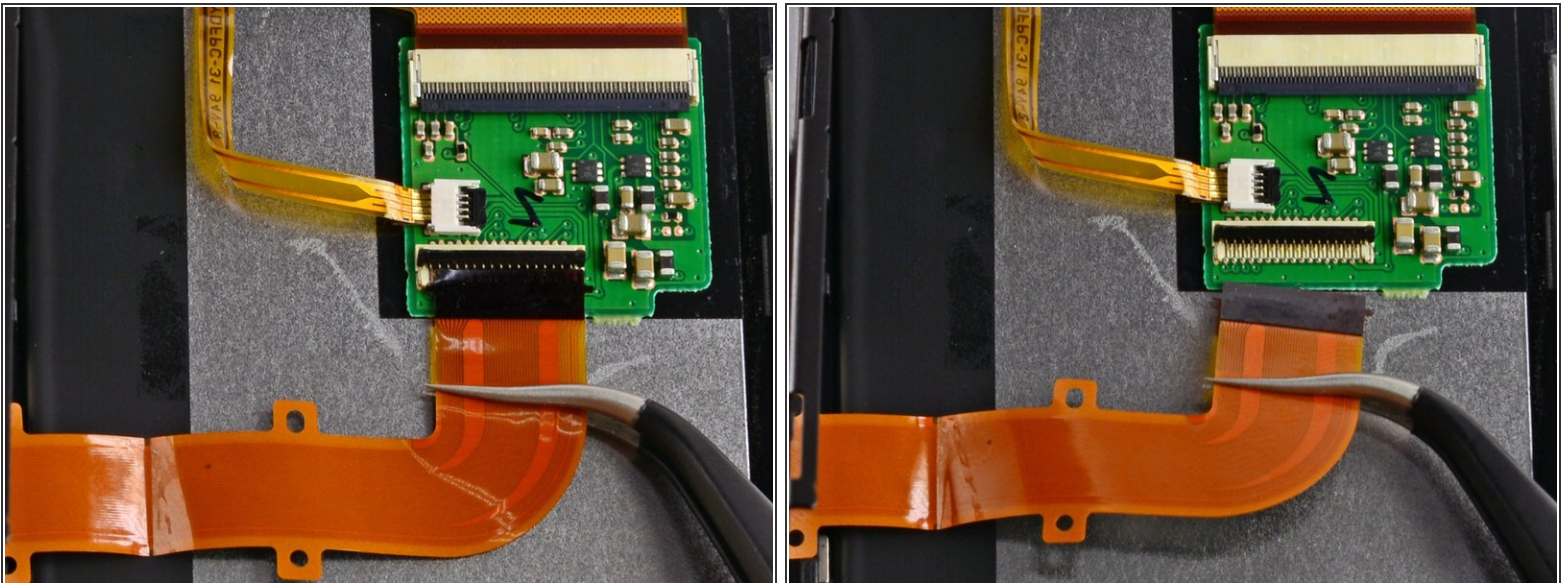


## Step 8



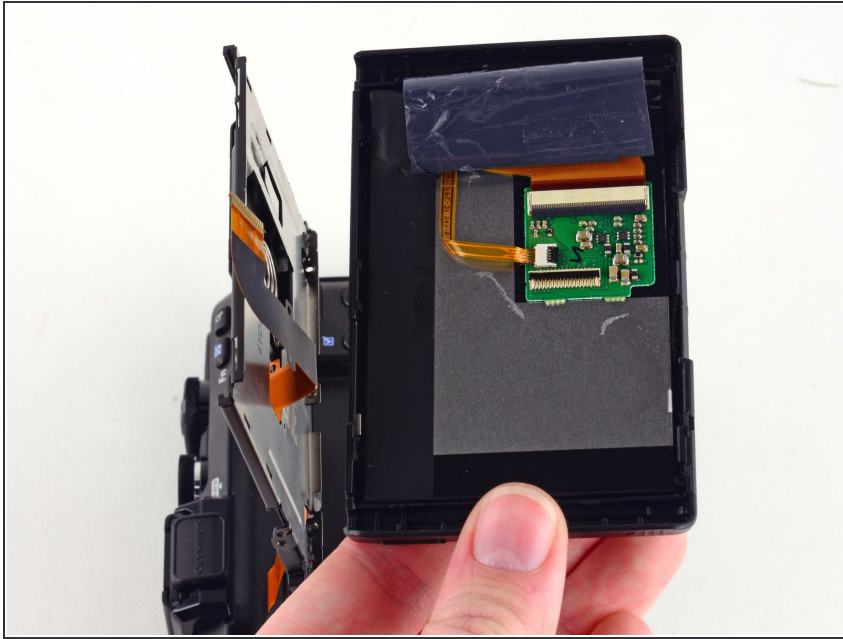
- Use a spudger to flip back the black bar on the LCD Ribbon ZIF connector.

## Step 9



- Gently pull the ribbon cable out with tweezers.

## Step 10



- Remove the LCD Screen.

To reassemble your device, follow these instructions in reverse order.