



# Olympus SP-320 Motherboard Replacement

Disassemble your camera so you can replace a faulty motherboard.

Written By: Brenna McCullough



# INTRODUCTION

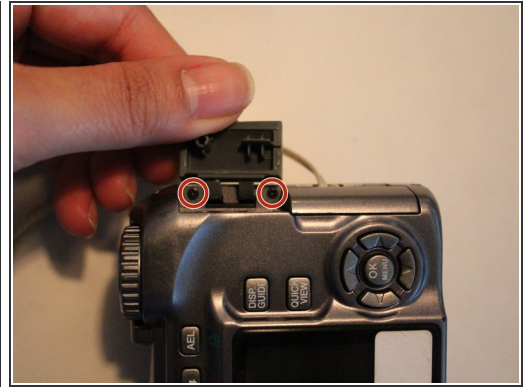
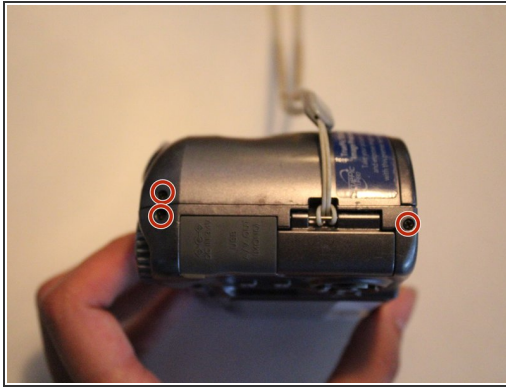
In this guide you will learn to remove your camera's back case to expose the motherboard. While replacing the motherboard be very gentle. As you will see in the steps, there are internal ribbons that could easily be ripped or broken.



## TOOLS:

- [Phillips #000 Screwdriver](#) (1)
  - [iFixit Opening Tools](#) (1)
-

## Step 1 — Motherboard



- Remove the 3 mm long screws using a Phillips head screwdriver that has a PH000 size bit.

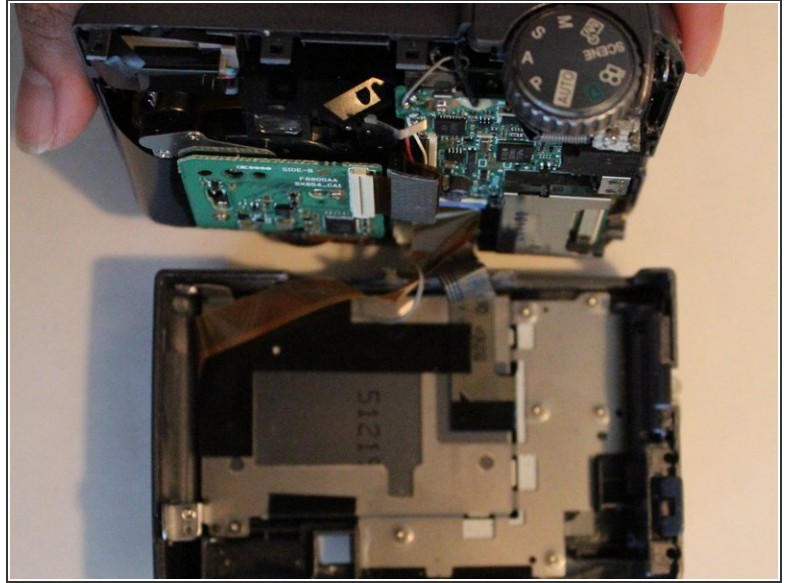
## Step 2



- Remove the 3 mm long screw using a Phillips head screwdriver that has a PH000 size bit.



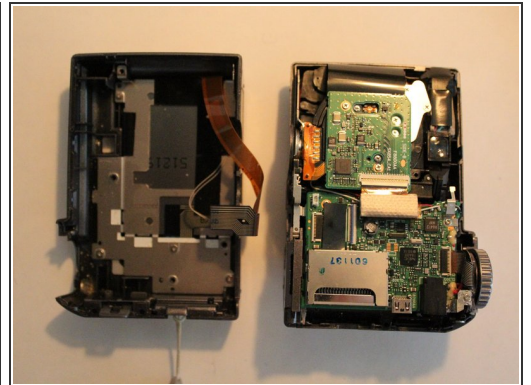
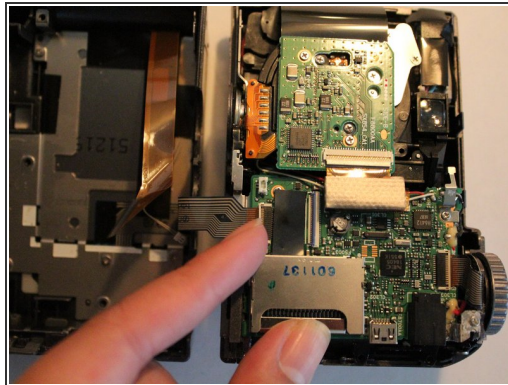
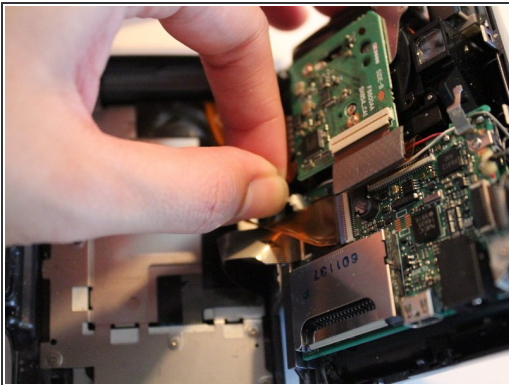
## Step 3



- Pry the outer case open using a blue, plastic opening tool.

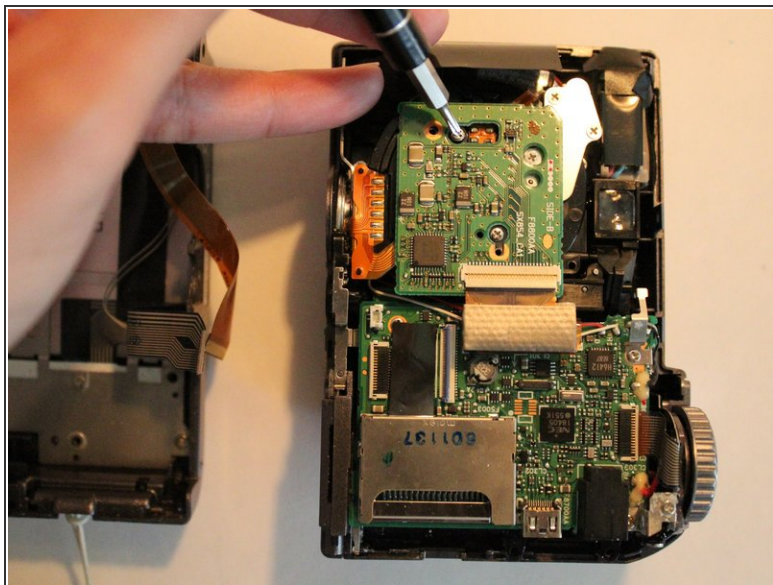
⚠ Pry case open gently to avoid tearing the ribbon that connects the front part of the case to the back of the case.

## Step 4



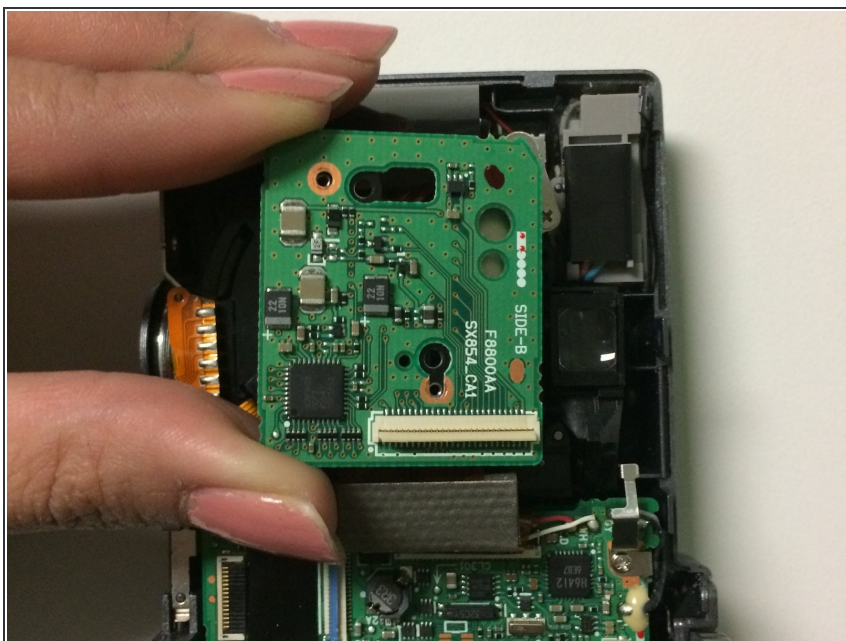
- Detach camera body from back casing and LCD screen.
- Pull gently on the white connecting cable to detach it from the main body of the camera.
- Lift the small, white, plastic clip detaching the ribbon from the main body of the camera.

## Step 5



- Remove 2 mm long screws with the Phillips head screwdriver that has a PH000 size bit.
- Remove 3 mm long screws with the Phillips head screwdriver that has a PH000 size bit.

## Step 6



- Remove motherboard.

To reassemble your device, follow these instructions in reverse order.