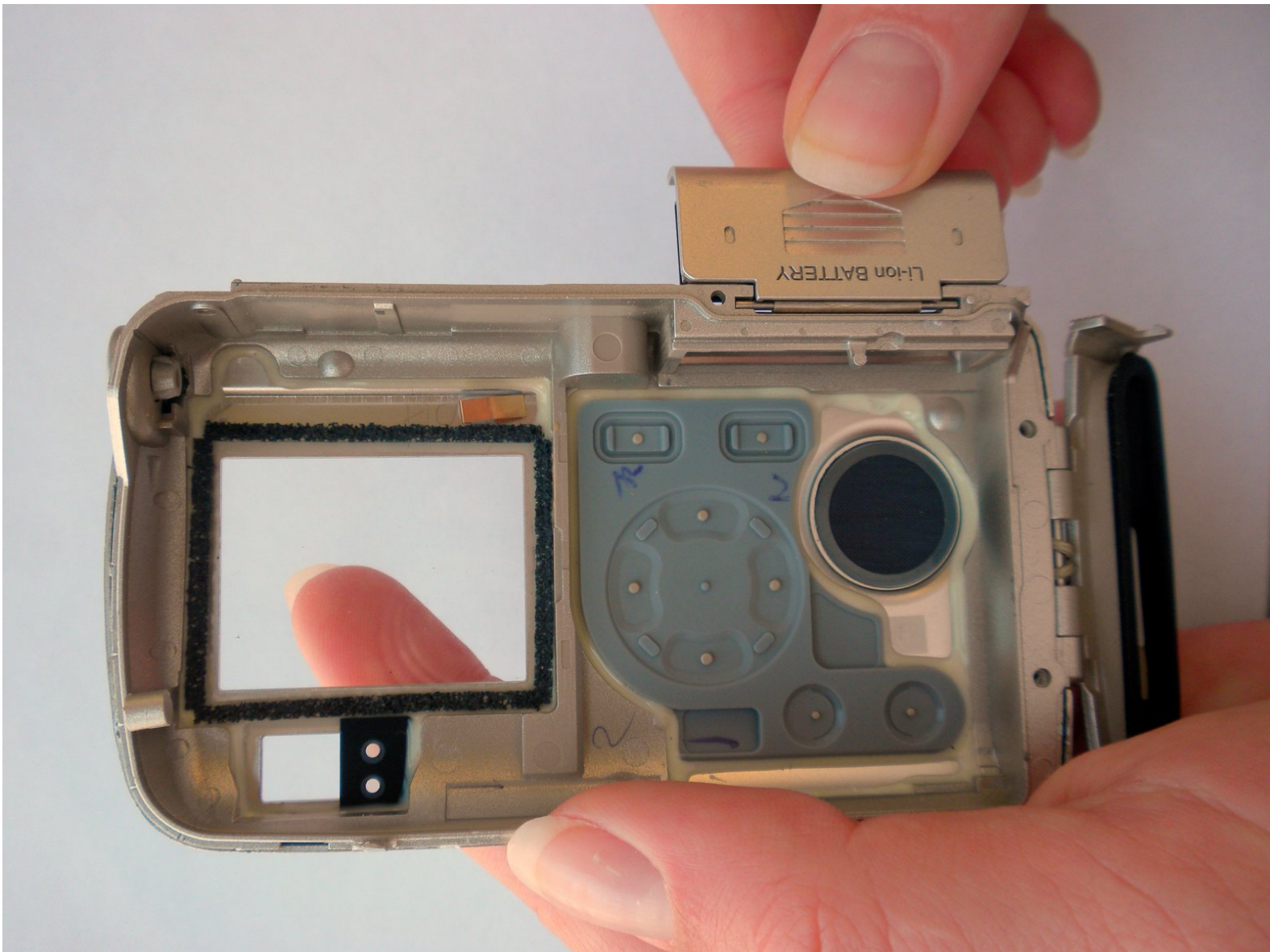




# Olympus Stylus 410 Battery Cover Replacement

Written By: Rory Aronson



## INTRODUCTION

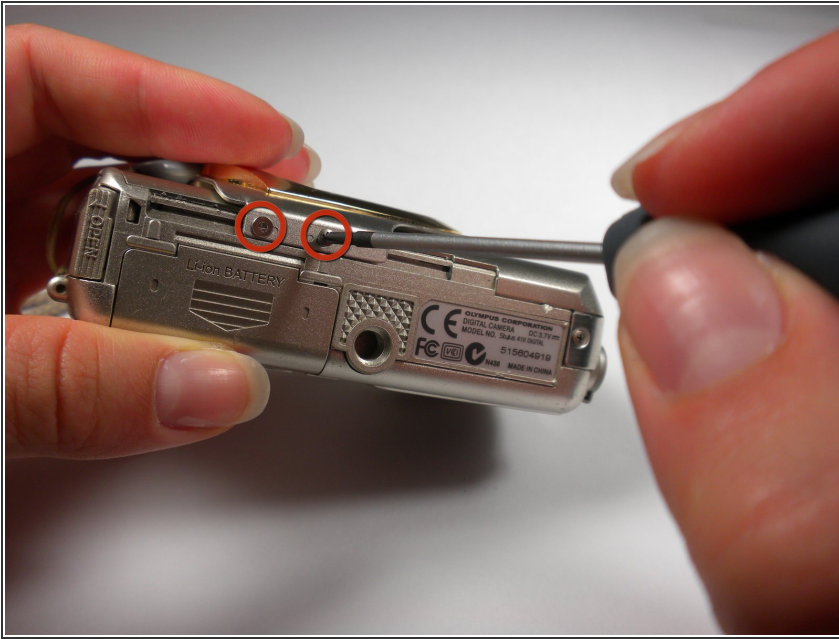
If the battery cover on your Olympus Stylus 410 digital camera has broken off, or is damaged, use this guide to remove it and replace with a new one.



### TOOLS:

- [Phillips #00 Screwdriver](#) (1)
  - [Spudger](#) (1)
-

## Step 1 — Slider



- Locate the 2 screws on the bottom of the slider.
- Remove both screws with a #00 Phillips screwdriver.

## Step 2



- Gently pull on the bottom of the slider until it comes off the lower track.
- There is a little piece that connects the slider to the track. Be sure not to lose this as it is needed to put the slider back on.



### Step 3



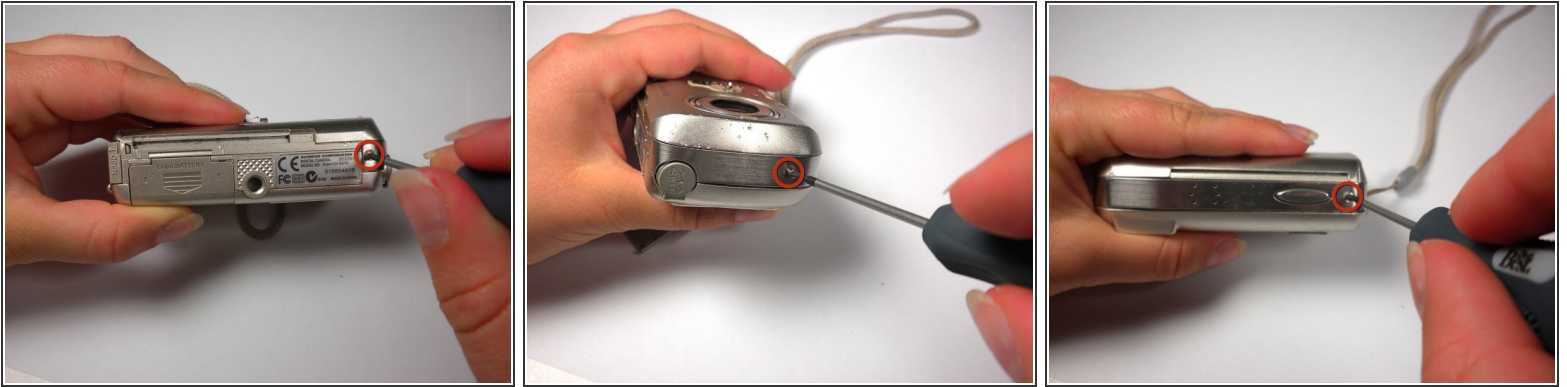
- Lift the slider up until it comes off the upper track.

### Step 4



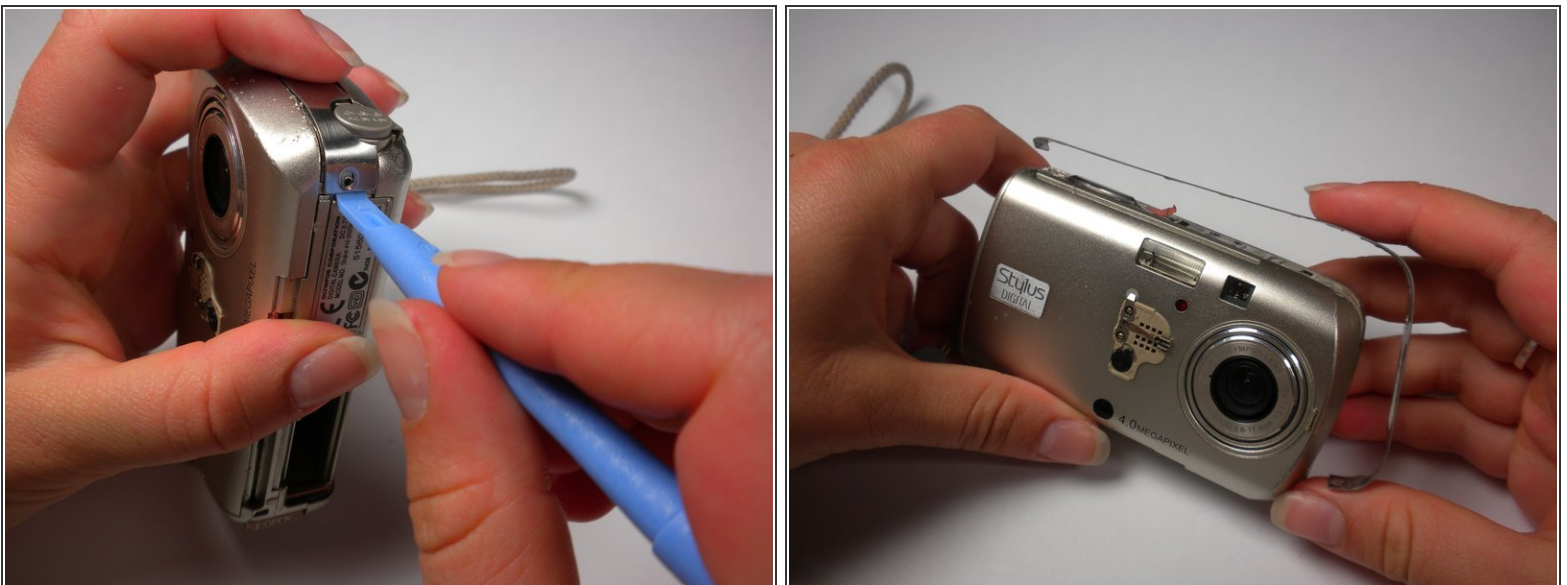
- The slider should now be free from the body of the camera.

## Step 5 — Outer Case



- Locate the 3 screws on the outer metal band and remove them with a #00 Phillips screwdriver.

## Step 6



- Use the spudger to peel off the outer metal band, starting from the bottom of the camera.

⚠ The metal band is attached to the camera with glue in addition to screws. Be careful not to bend the band when removing it from the camera.



## Step 7



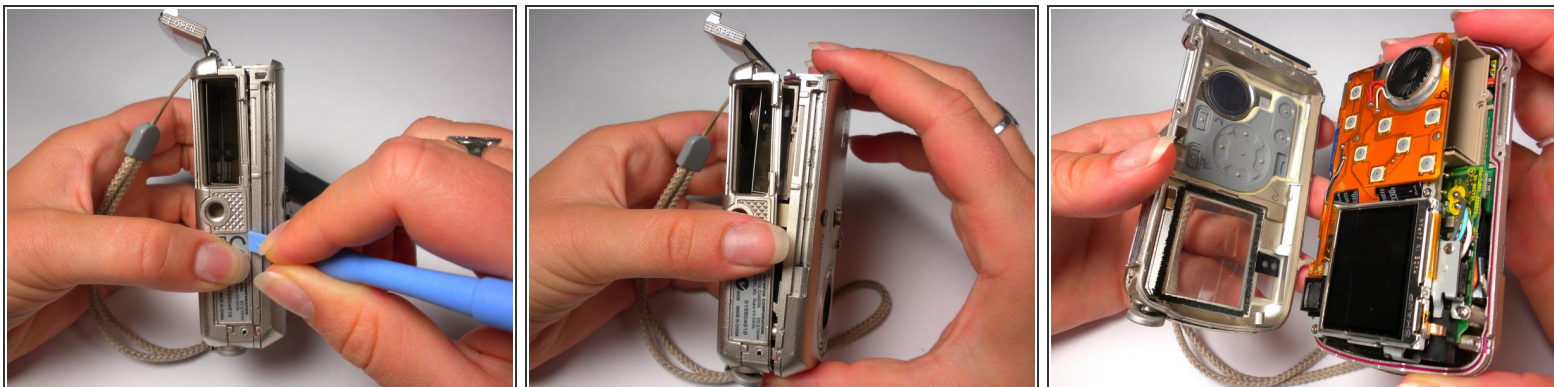
- The shutter button can now be removed. It is not connected to the camera and can be lifted off.

## Step 8



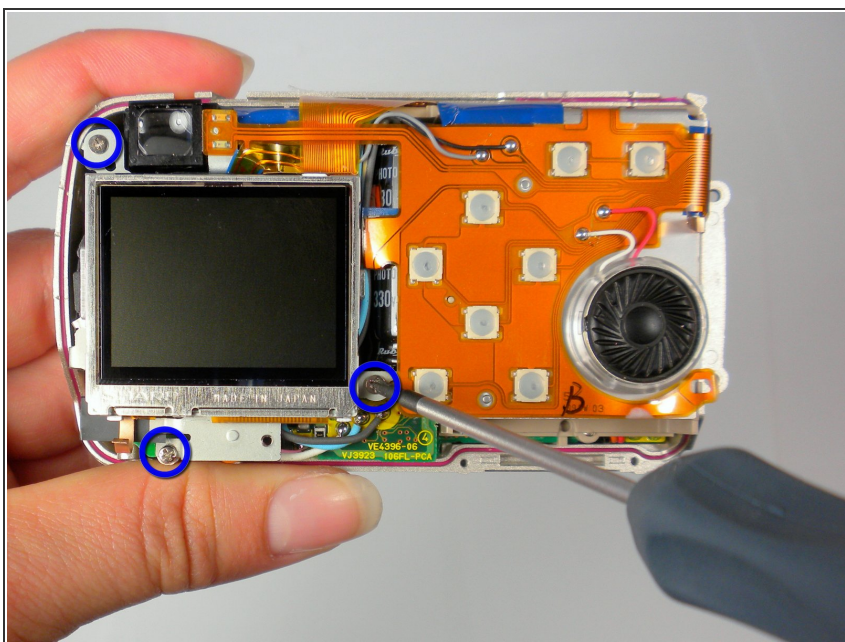
- Remove the memory card.
- Locate and remove the 2 screws using a #00 Phillips screwdriver.

## Step 9



- Use a spudger around the edge of the case to loosen it.
- Carefully wiggle the back case off. This may require a fair amount of force.

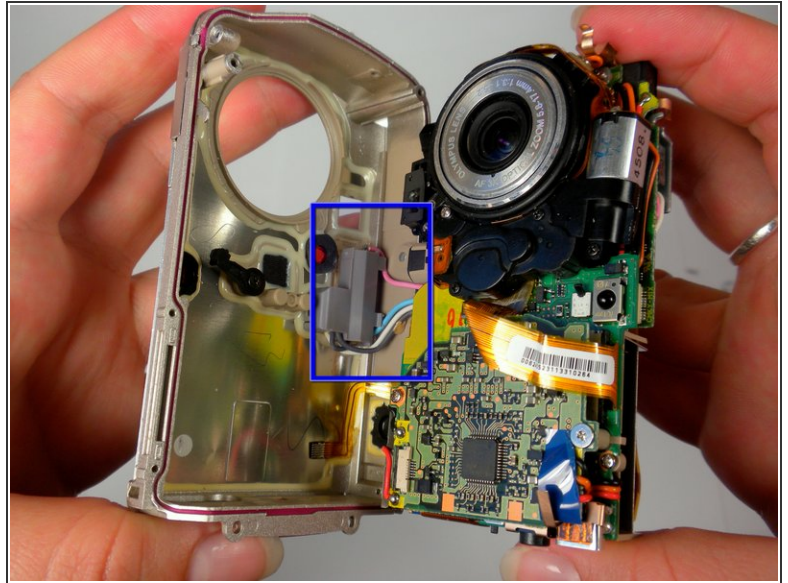
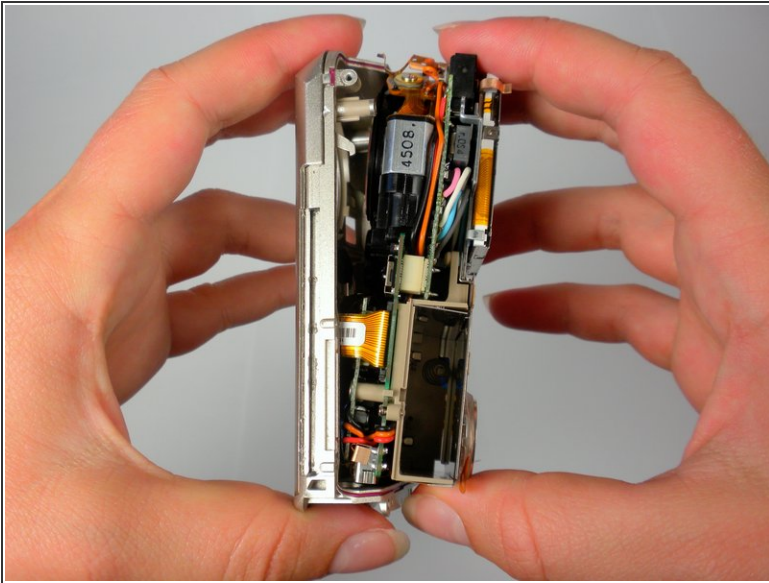
## Step 10



- Locate the 3 internal screws holding on the front of the case. Remove them with a #00 Phillips screwdriver.



## Step 11



- While grasping the interior and the front case, gently pull until they start to come apart. Some light wiggling may be required.
- Be careful not to completely pull the front case off because it will still be connected with wires.

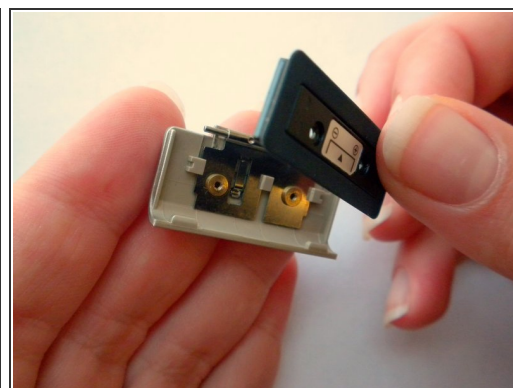
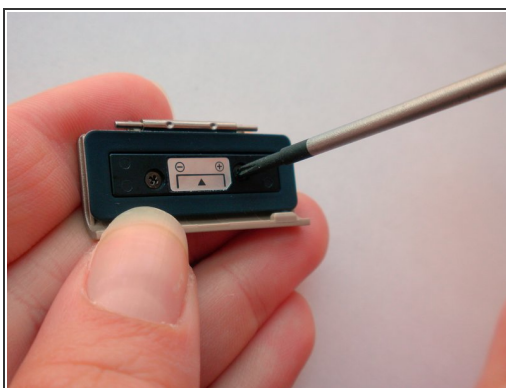
## Step 12 — Battery Cover



- Open the battery cover and lift it up and off of back camera case.

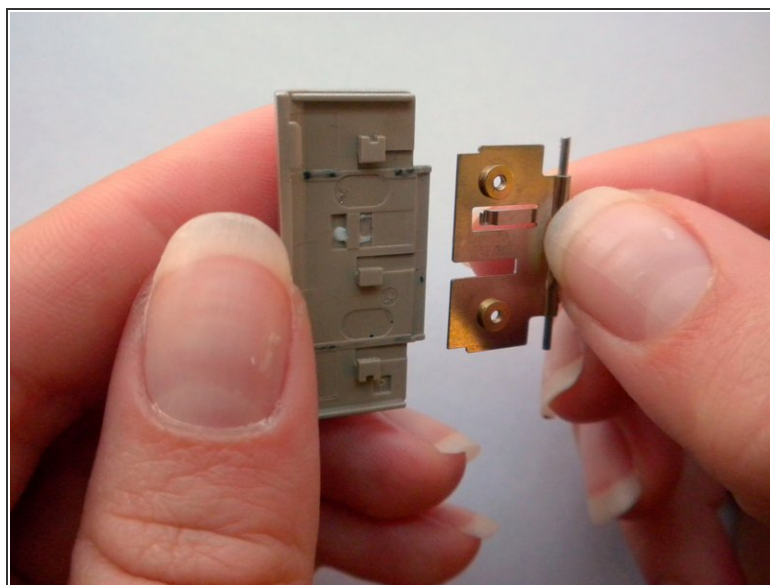
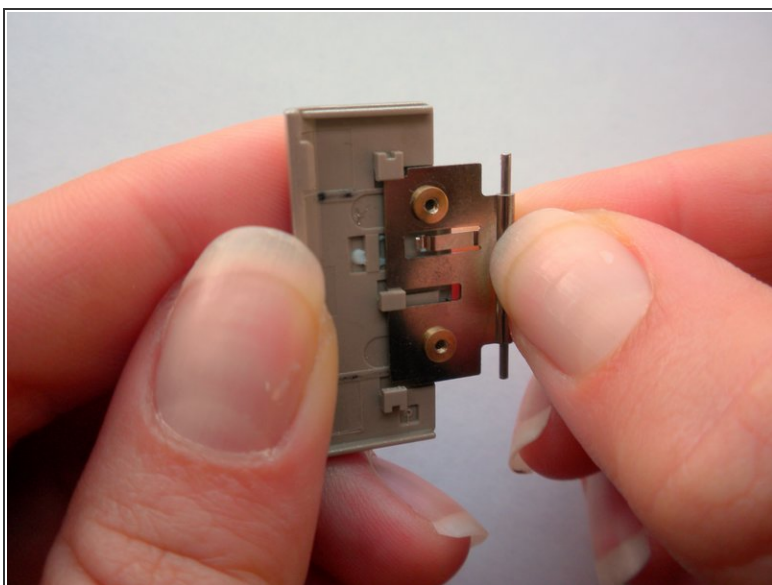


## Step 13



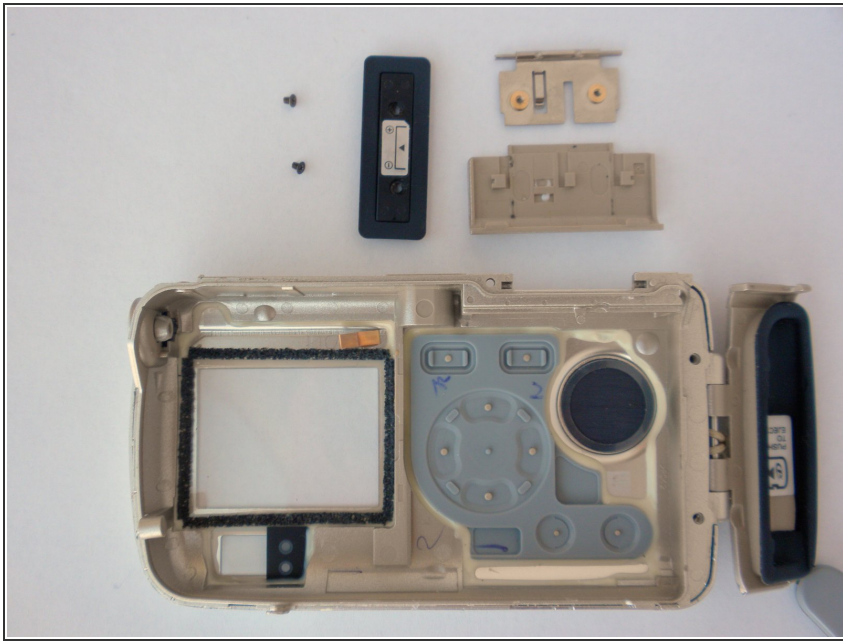
- Locate and unscrew the 2 screws with a #00 Phillips screwdriver.
- Remove the black seal.

## Step 14



- Slide the metal piece off of the battery cover.

## Step 15



- This is what the battery cover and back case look like completely disassembled.

To reassemble your device, follow these instructions in reverse order.