



Olympus Stylus 410 Shutter Button Replacement

Written By: Rory Aronson



INTRODUCTION

If the shutter button on your camera has stopped functioning, use this guide to remove the old one and install a new button.



TOOLS:

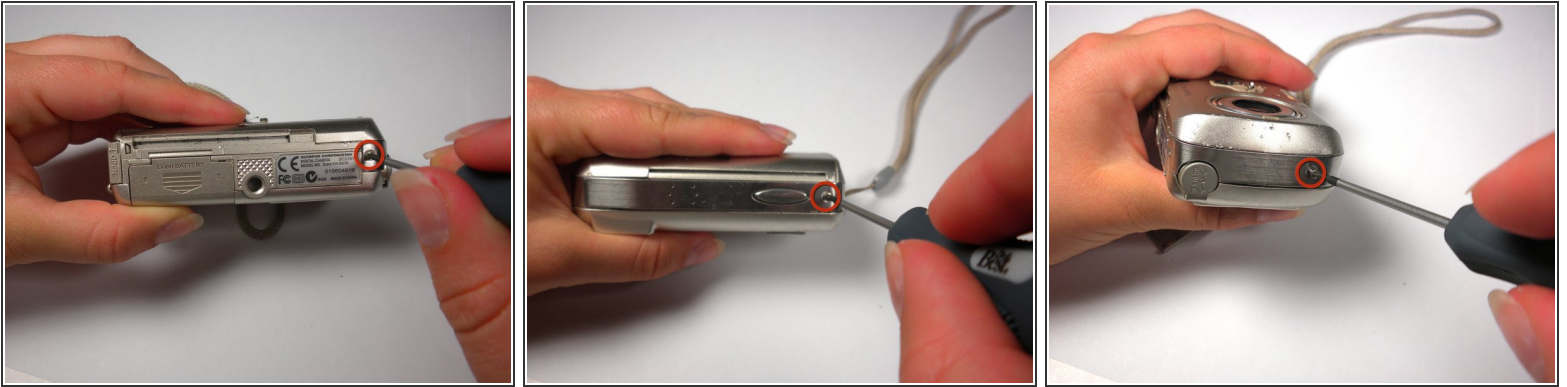
- [Phillips #00 Screwdriver](#) (1)
- [Spudger](#) (1)



PARTS:

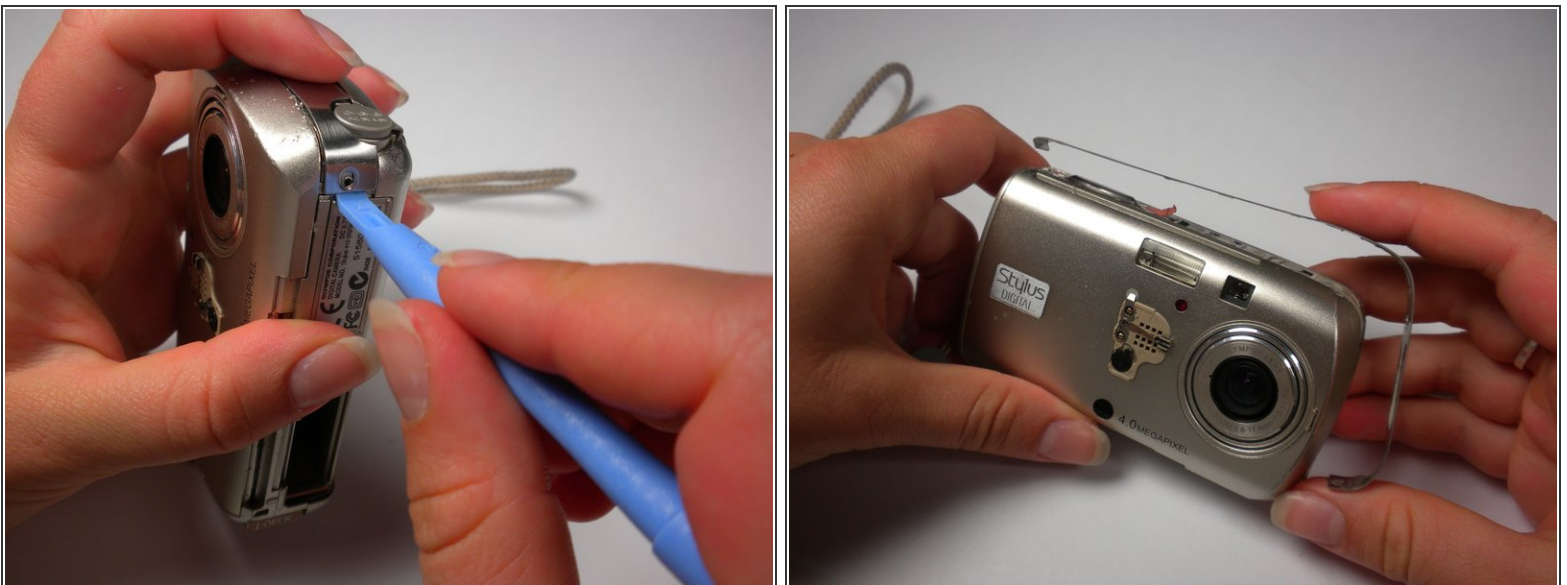
- [Replacement Shutter Button](#) (1)

Step 1 — Shutter Button



- Locate the 3 screws on the outer metal band and remove them with a #00 Phillips screwdriver.

Step 2



- Use the spudger to peel off the outer metal band, starting from the bottom of the camera.

⚠ The metal band is attached to the camera with glue in addition to screws. Be careful not to bend the band when removing it from the camera.

Step 3



- The shutter button can now be removed. It is not connected to the camera and can be lifted off.

To reassemble your device, follow these instructions in reverse order.