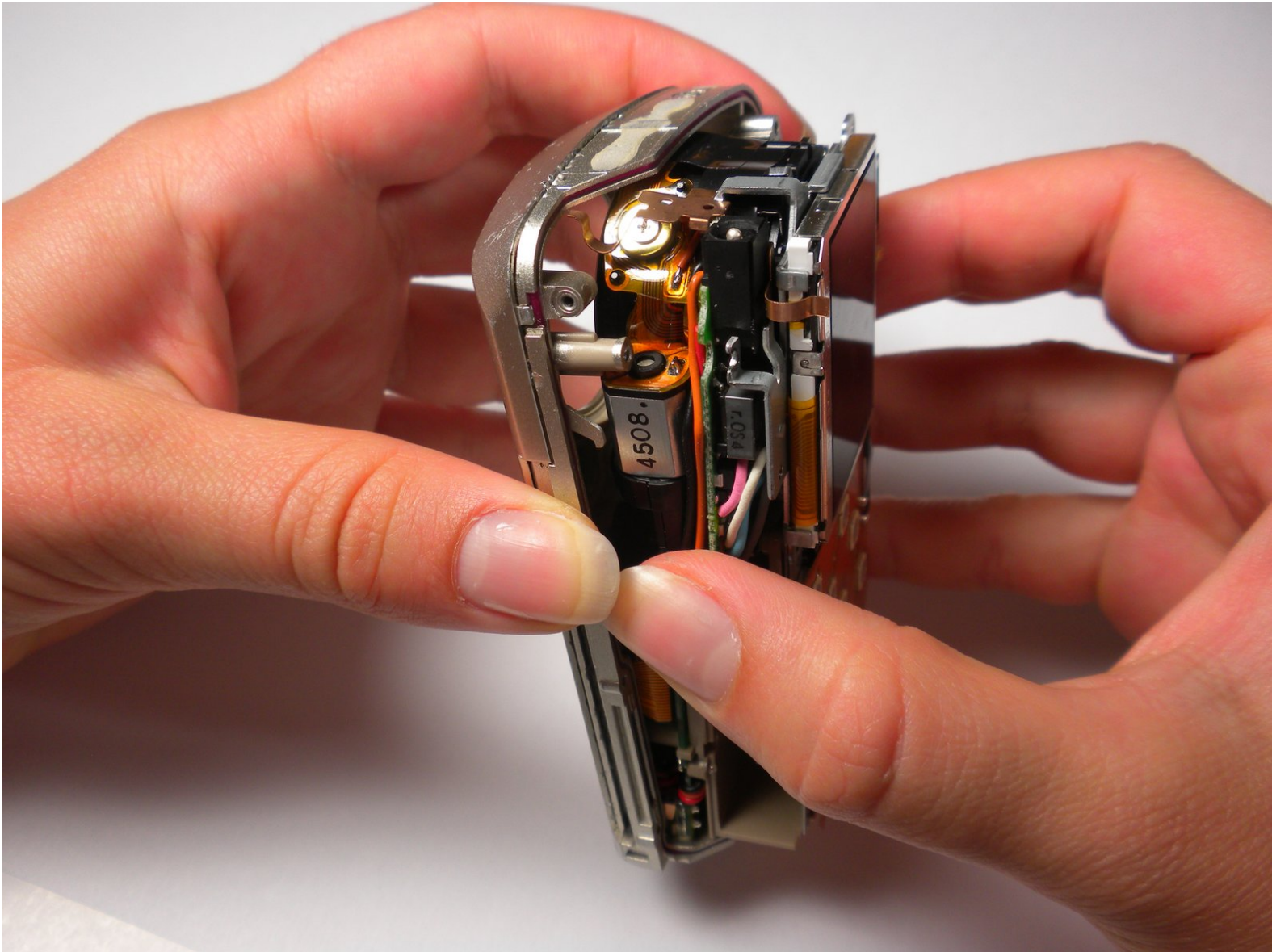




# Olympus Stylus 410 Teardown

Written By: Rory Aronson



---

# INTRODUCTION

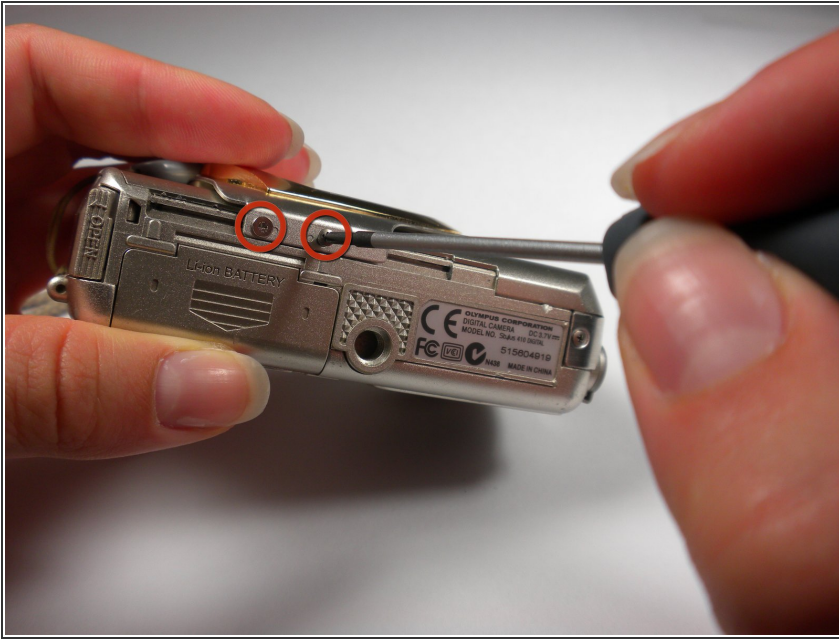
This guide will show you how to completely teardown your camera.



## TOOLS:

- [Phillips #00 Screwdriver](#) (1)
  - [Spudger](#) (1)
-

## Step 1 — Slider



- Locate the 2 screws on the bottom of the slider.
- Remove both screws with a #00 Phillips screwdriver.

## Step 2



- Gently pull on the bottom of the slider until it comes off the lower track.
- There is a little piece that connects the slider to the track. Be sure not to lose this as it is needed to put the slider back on.



### Step 3



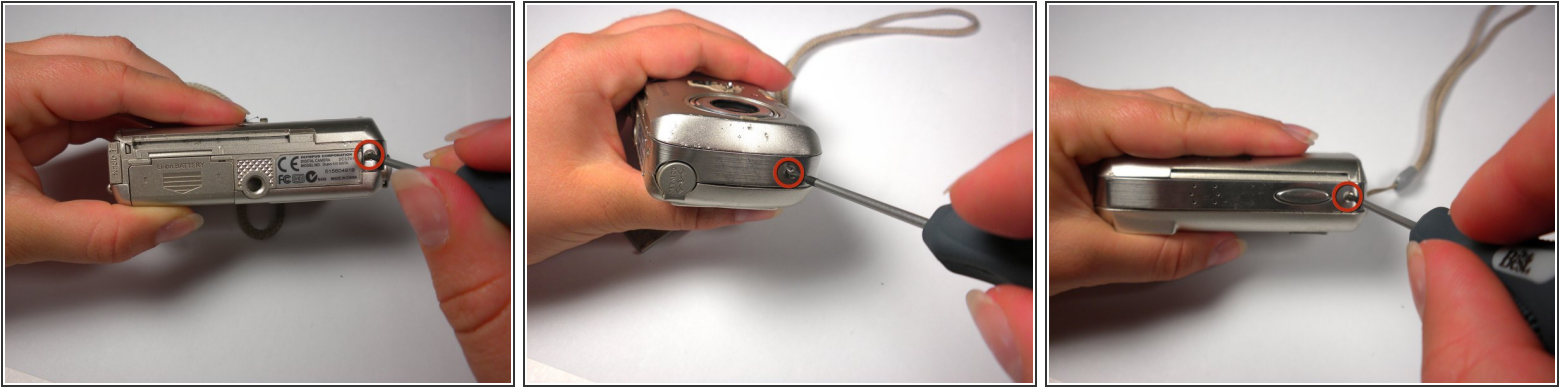
- Lift the slider up until it comes off the upper track.

### Step 4



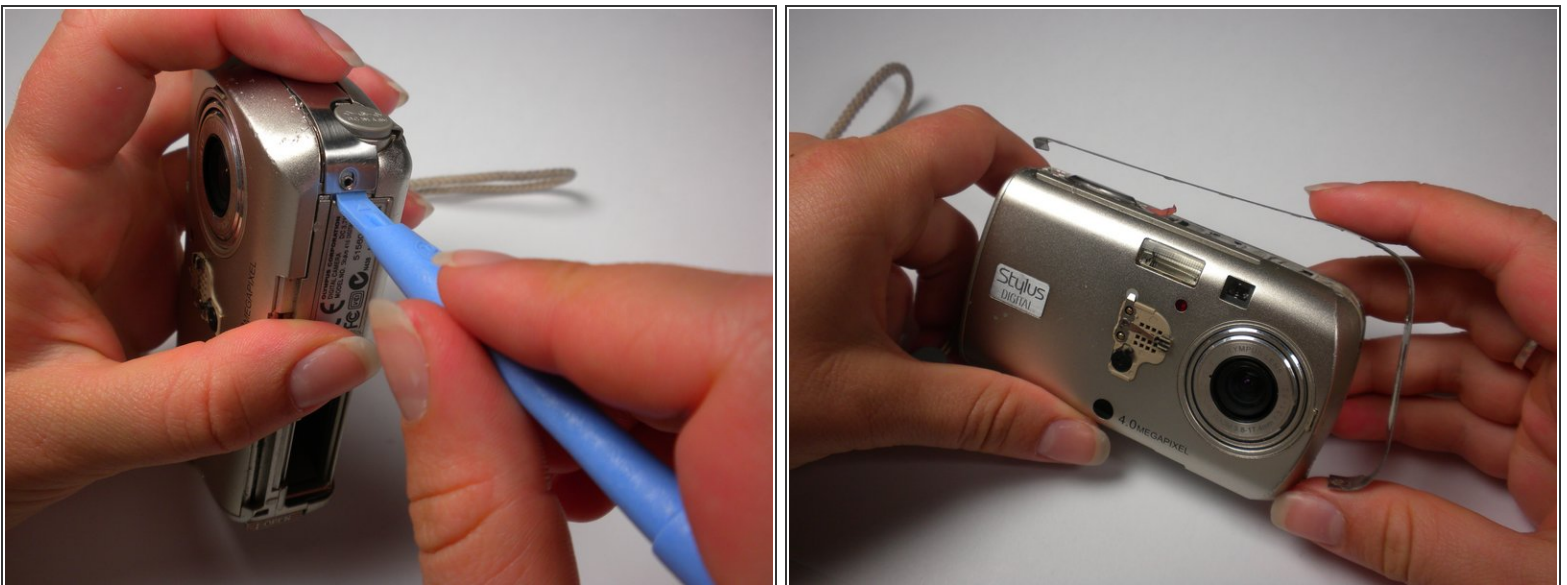
- The slider should now be free from the body of the camera.

## Step 5 — Outer Case



- Locate the 3 screws on the outer metal band and remove them with a #00 Phillips screwdriver.

## Step 6



- Use the spudger to peel off the outer metal band, starting from the bottom of the camera.

⚠ The metal band is attached to the camera with glue in addition to screws. Be careful not to bend the band when removing it from the camera.



## Step 7



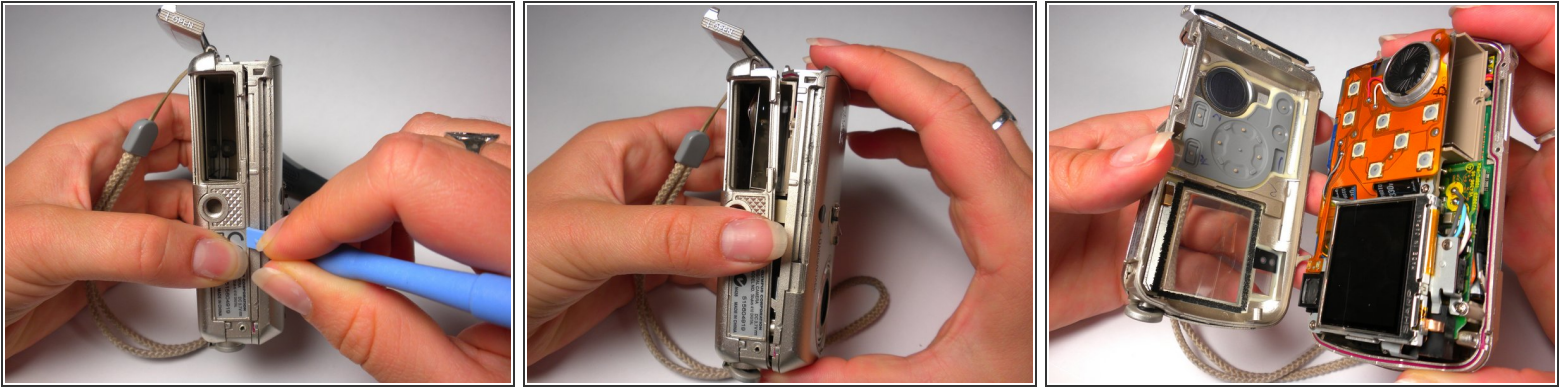
- The shutter button can now be removed. It is not connected to the camera and can be lifted off.

## Step 8



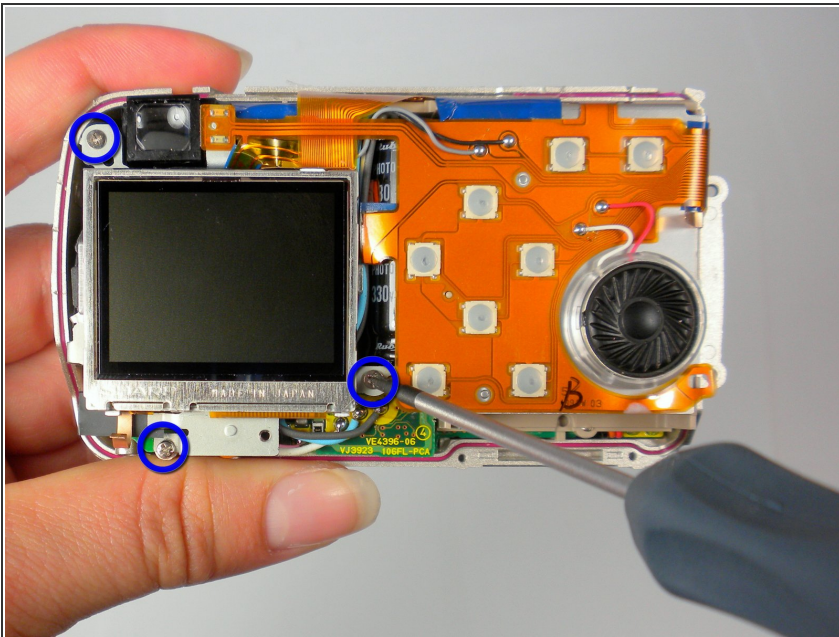
- Remove the memory card.
- Locate and remove the 2 screws using a #00 Phillips screwdriver.

## Step 9



- Use a spudger around the edge of the case to loosen it.
- Carefully wiggle the back case off. This may require a fair amount of force.

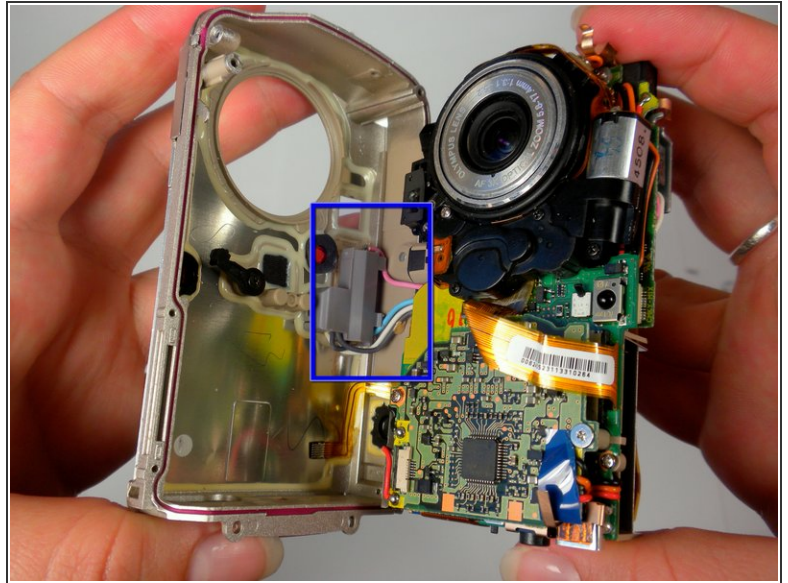
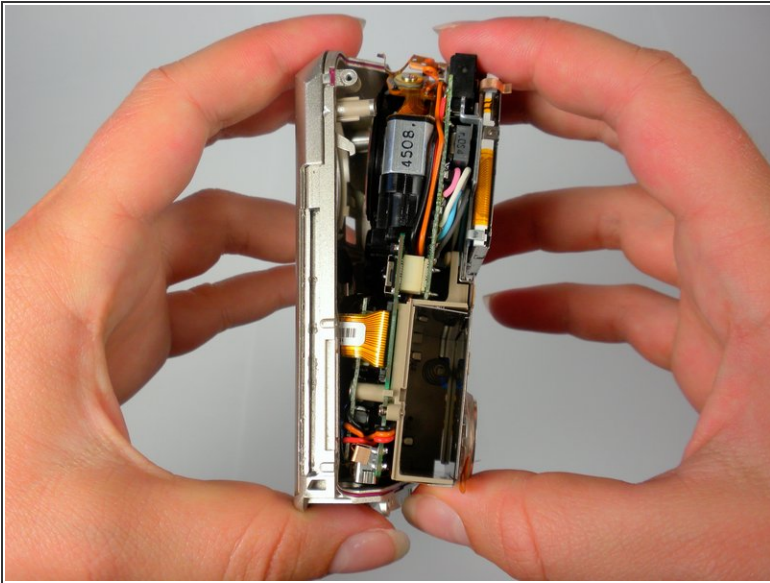
## Step 10



- Locate the 3 internal screws holding on the front of the case. Remove them with a #00 Phillips screwdriver.



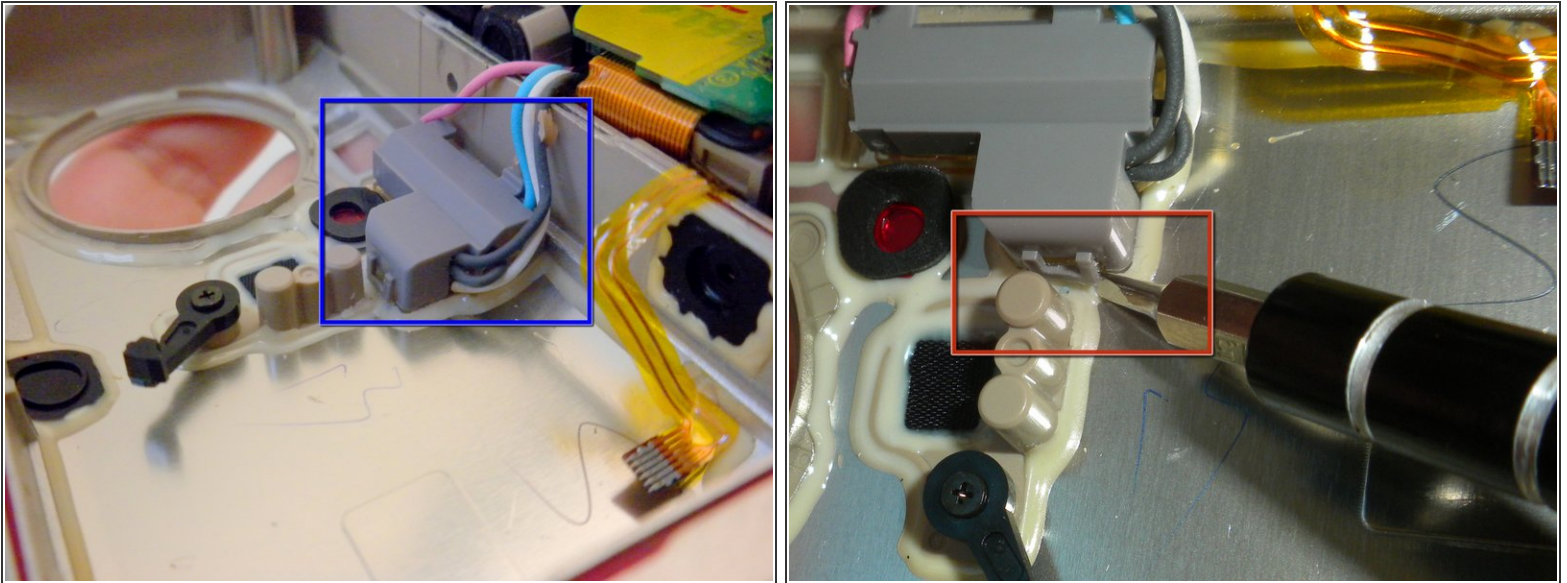
## Step 11



- While grasping the interior and the front case, gently pull until they start to come apart. Some light wiggling may be required.
- Be careful not to completely pull the front case off because it will still be connected with wires.



## Step 12 — Flash



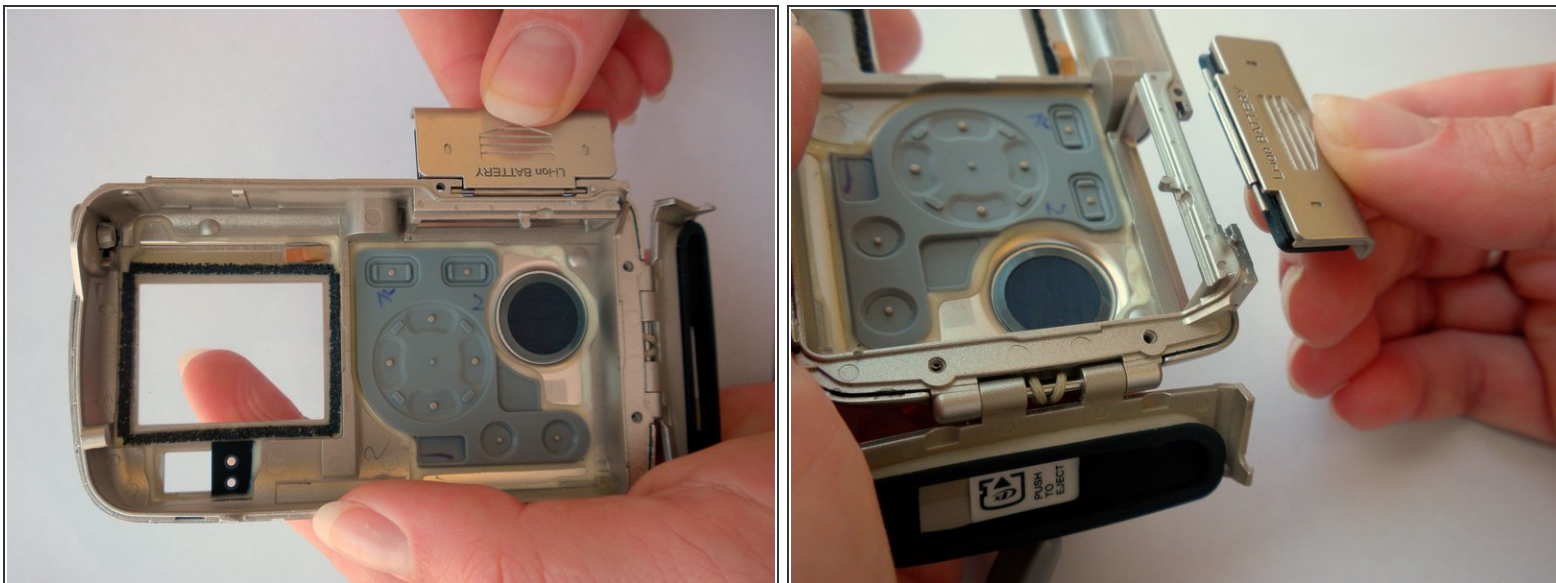
- Locate the gray compartment covering the flash.
- Position your flat head screw driver or small spudger underneath the tab that is keeping the gray cover on.
- Gently lift the tab so the gray compartment becomes free.

## Step 13



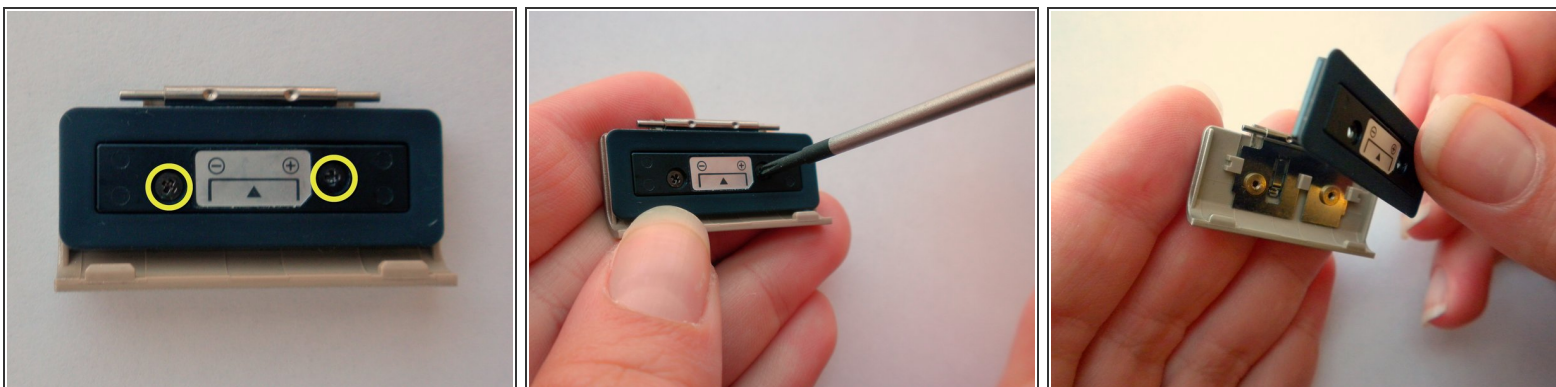
- Use the spudger around the perimeter of the gray compartment to detach it from the front case.
- The gray compartment can now be removed from the flash unit.
- The flash unit can now be removed, and a new one soldered back on.

## Step 14 — Battery Cover



- Open the battery cover and lift it up and off of back camera case.

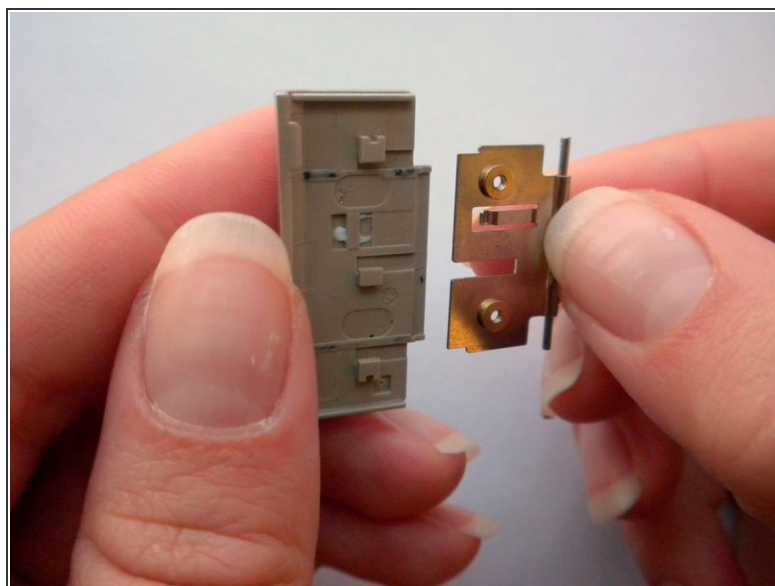
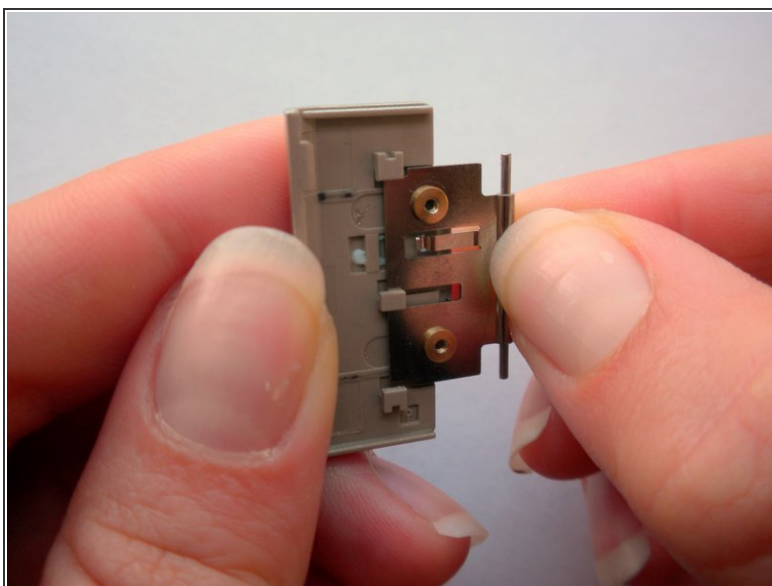
## Step 15



- Locate and unscrew the 2 screws with a #00 Phillips screwdriver.
- Remove the black seal.



## Step 16



- Slide the metal piece off of the battery cover.

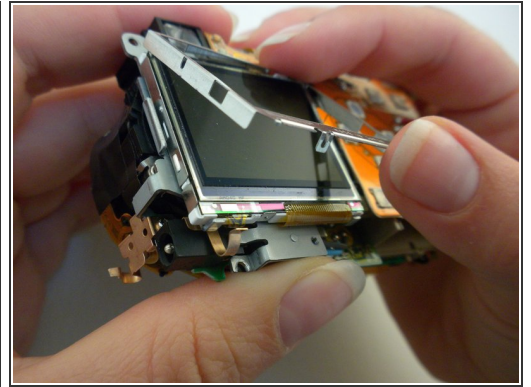
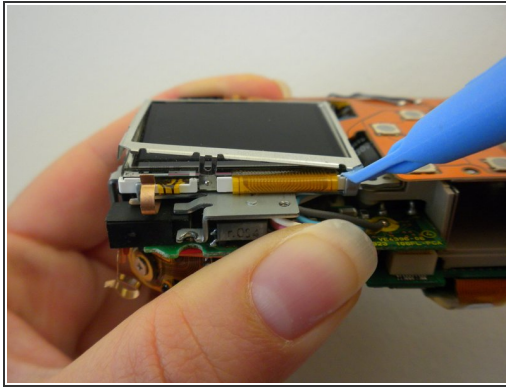
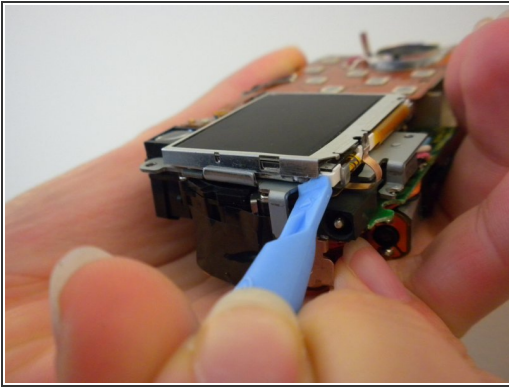
## Step 17



- This is what the battery cover and back case look like completely disassembled.

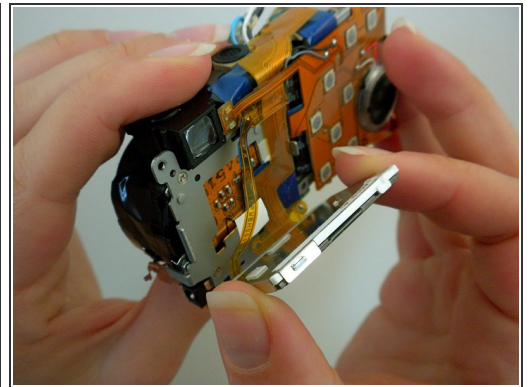
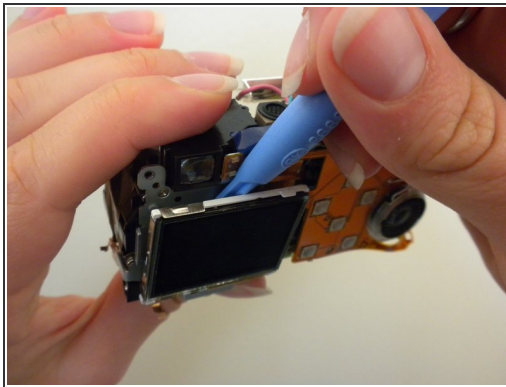
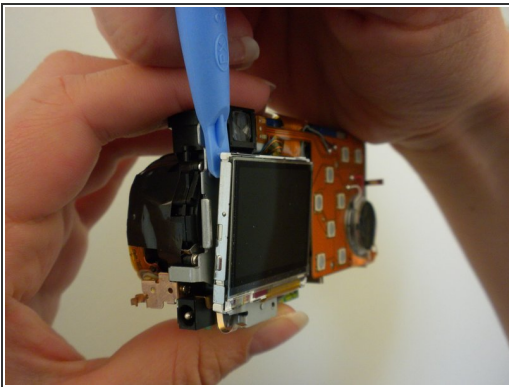


## Step 18 — LCD Screen



- Remove the metal frame from the LCD screen using a spudger.

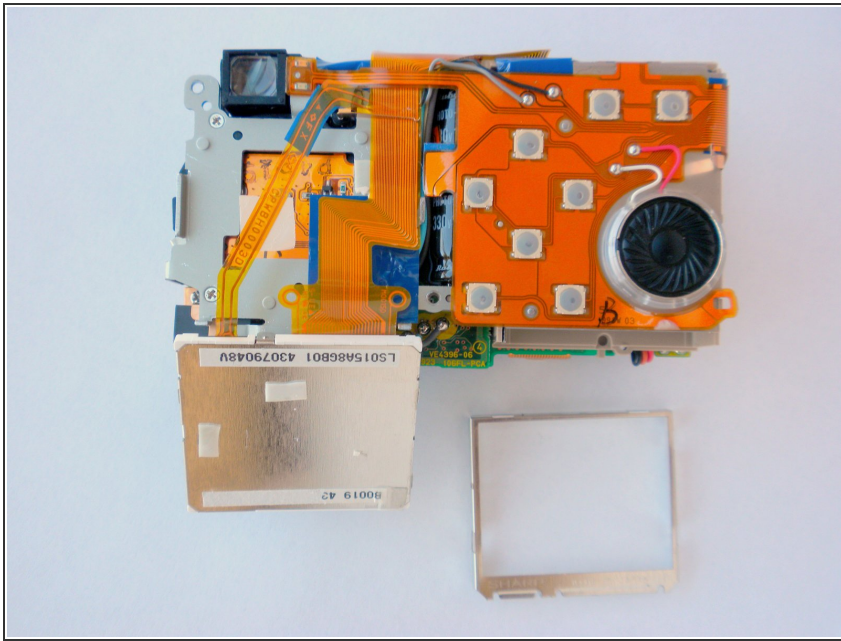
## Step 19



- Pry off the LCD screen from the top using a spudger. The screen will not be completely free from the device because of a ribbon.

⚠ Do not pull the screen completely off because it will still be held on by two ribbon cables.

## Step 20



- This is what the camera will look like now that the LCD screen is removed.

To reassemble your device, follow these instructions in reverse order.