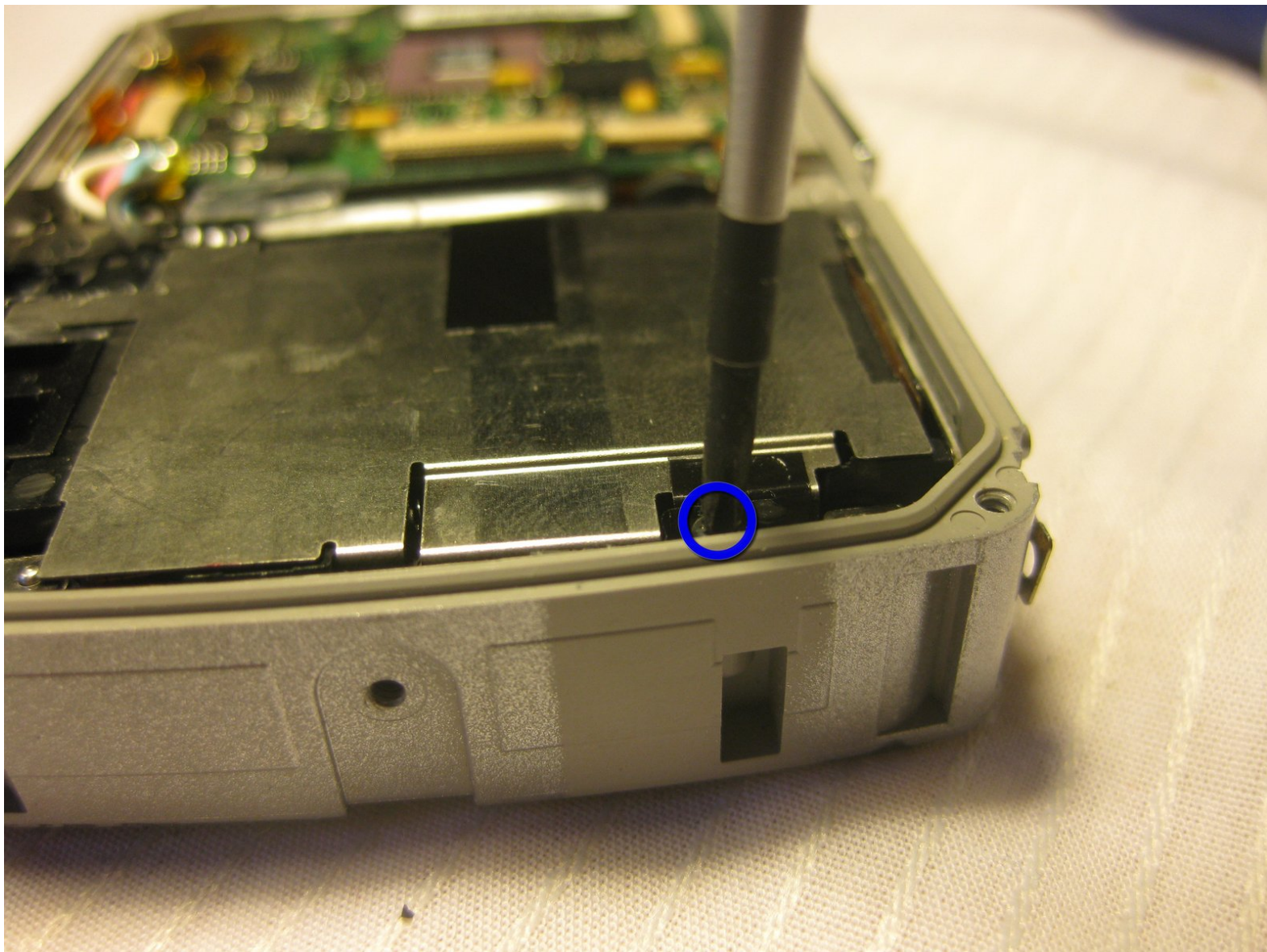




# Olympus Stylus 725 SW Lens Replacement

Written By: Bobby Hodges



# INTRODUCTION

Use this guide to replace a broken lens inside the camera.



## TOOLS:

- [1.5mm Hex Screwdriver](#) (1)
  - [Phillips #00 Screwdriver](#) (1)
  - [Spudger](#) (1)
-

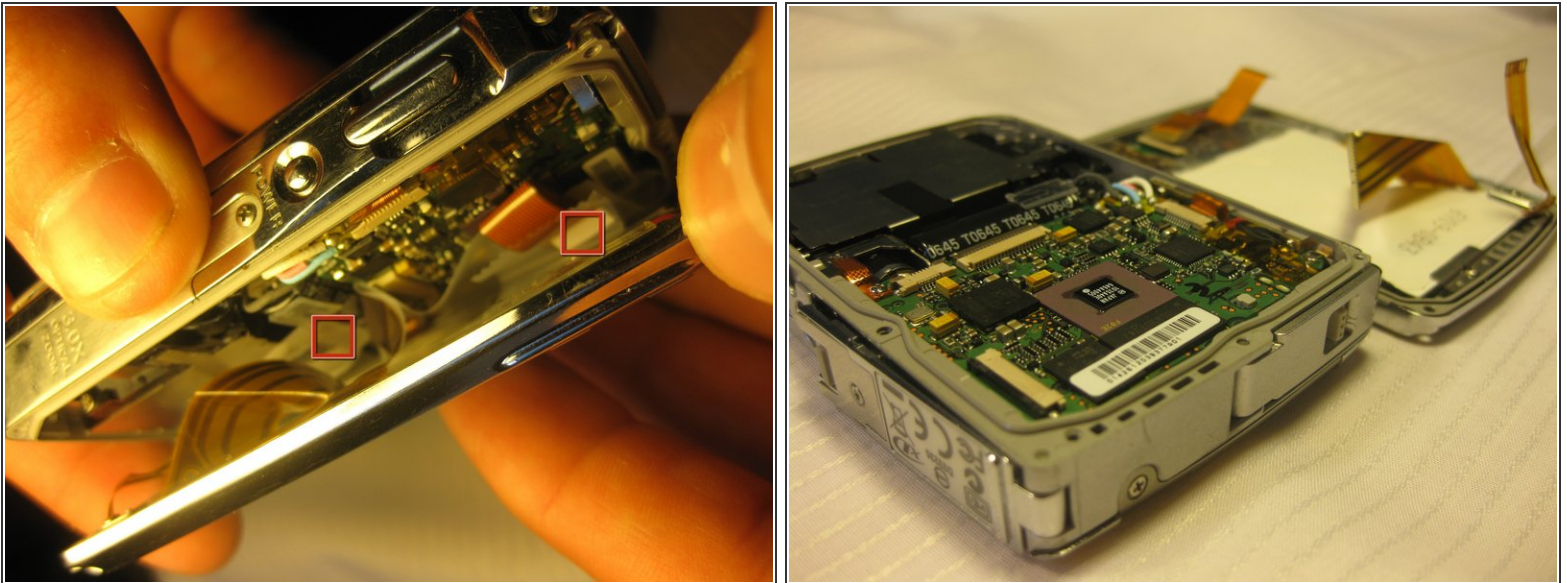


## Step 1 — Back Panel



- Unscrew the 3mm long cover screws at the corners of the camera using a #00 Philips Screwdriver.
- Unscrew the 2mm long screws securing the sides of the camera which holds the back panel. Use the same screwdriver.

## Step 2



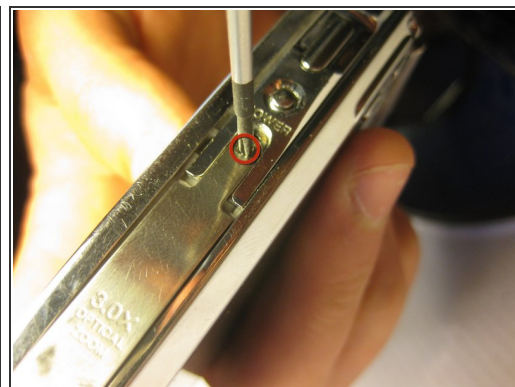
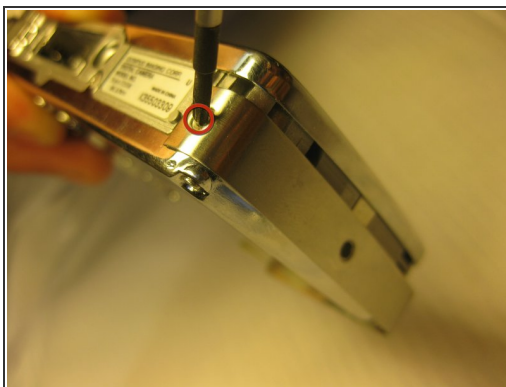
- ⚠ Be careful when removing the back cover, you will need to detach the connecting ribbons
- Detach the ribbons using your thumb, sliding them out of their slots.

### Step 3 — Front Panel



- Remove the top screws using a 1.5 mm screwdriver.
- Remove the single side screw located on the side of the camera where the tab is, using a #00 screwdriver.

### Step 4 — Side Panels



- Using a #00 Philips Head Screwdriver, remove the screws located on all four sides of the camera.

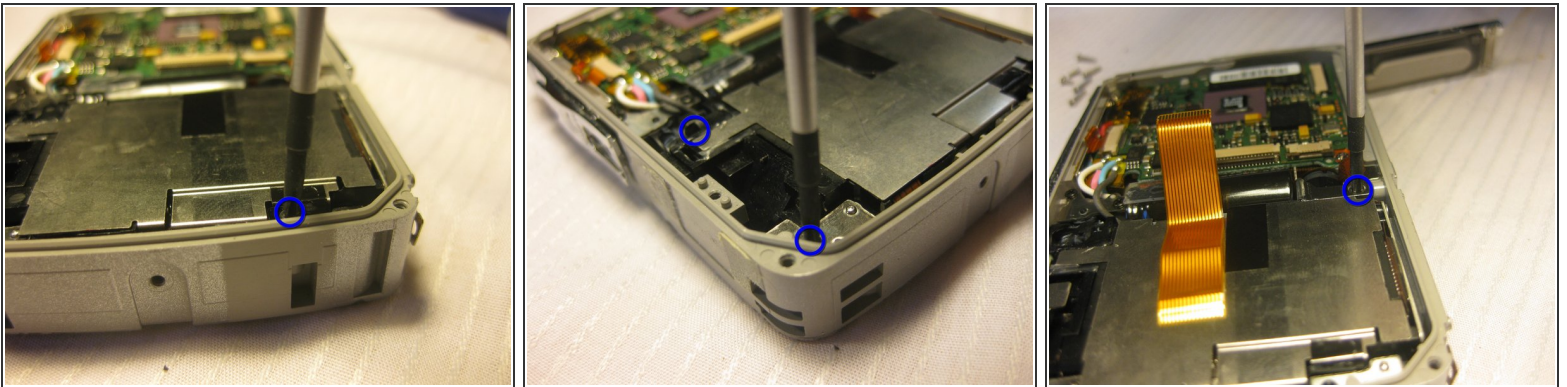


## Step 5



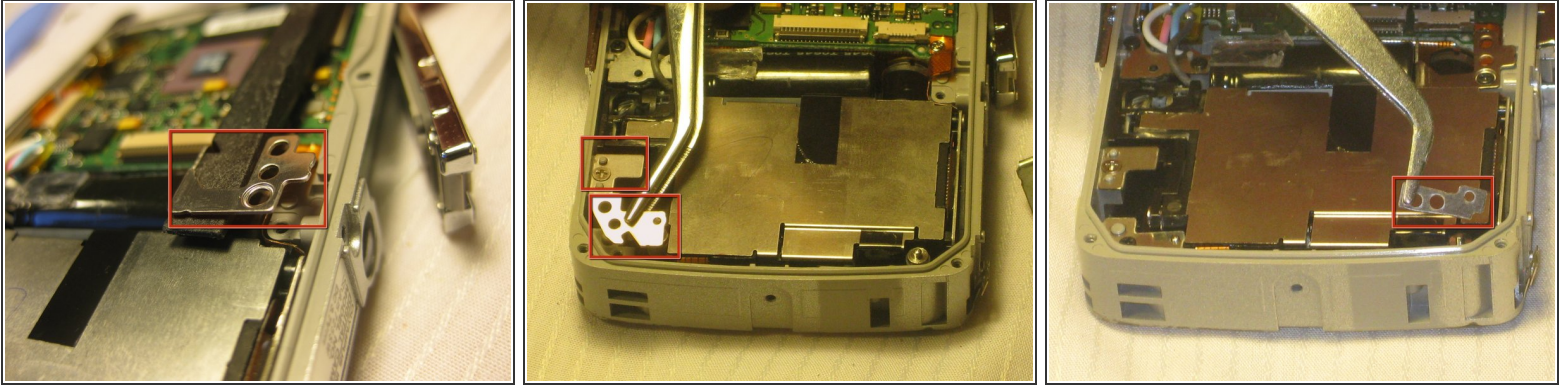
- After removing all four of the screws, pry the side covers off of the camera.

## Step 6 — Lens



- Unscrew four 2mm long screws using the #00 Phillips screwdriver.

## Step 7



- Remove four metal tabs from corners where the 2mm long screws were attached using tweezers.

## Step 8



- Remove the viewfinder lens using a prying device.
- There will be two ribbons attached to the viewfinder. Remove the ribbons by sliding them off the viewfinder with your thumb.

To reassemble your device, follow these instructions in reverse order.