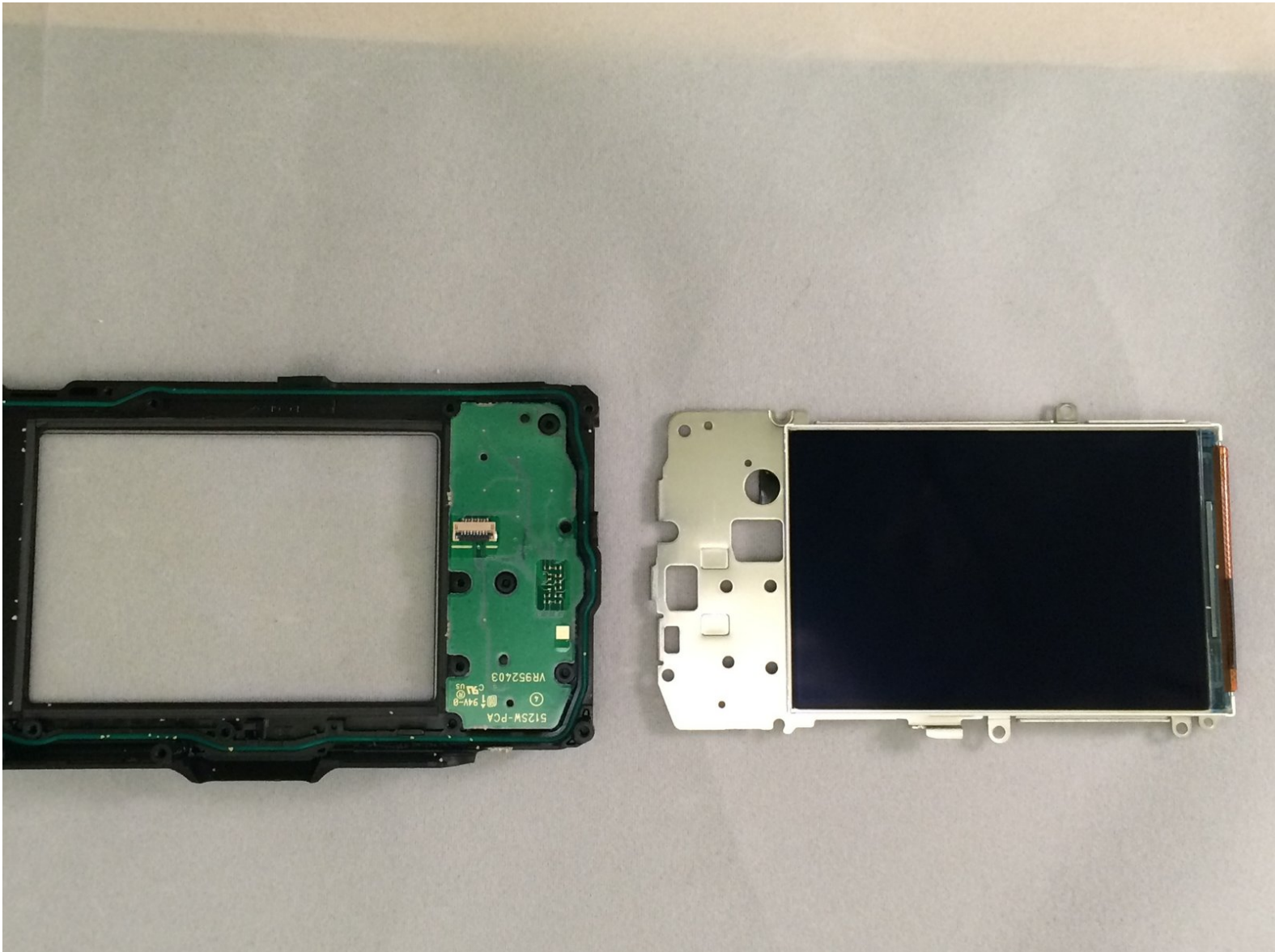




# Olympus Stylus Tough TG-2 iHS Display Assembly Replacement

Prerequisite Only

Written By: Amanda



---

# INTRODUCTION

Prerequisite Only



## TOOLS:

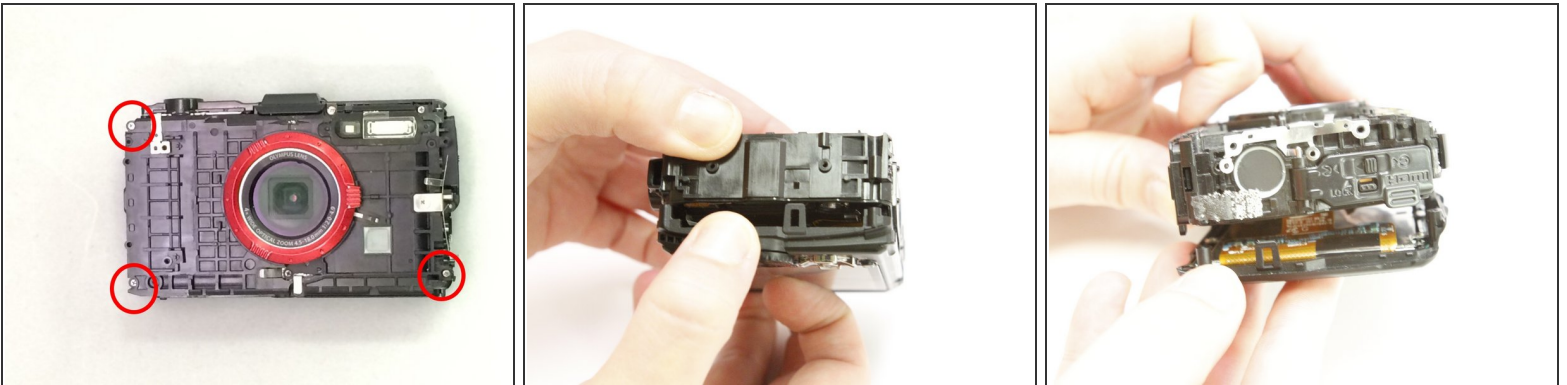
- [Spudger](#) (1)
  - [Phillips #00 Screwdriver](#) (1)
-

## Step 1 — Display Assembly



- To detach the monitor screen, remove the following 7 screws:
- Locate the flash and remove the 2 Phillips #00 9.23mm & 14.87mm screws.
- Locate the battery door and remove the single Phillips #00 3.37mm screw.
- On the bottom of the camera, remove the single Phillips 3.58mm screw near the tripod socket.

## Step 2



- On the face plate, locate and remove the 2 eyelet strap side Phillips #00 9.2mm corner screws and the lower battery corner Phillips #00 14.87mm screw.
- Use your fingers to unclasp the casing clips on either side of the camera and pull down the monitor casing.
- Using the spudger to gently pry the screen away from the body of the camera.

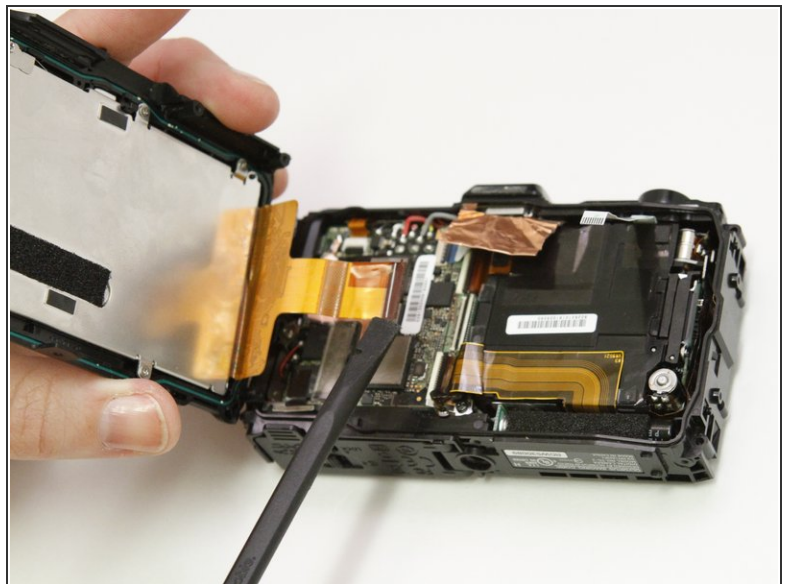
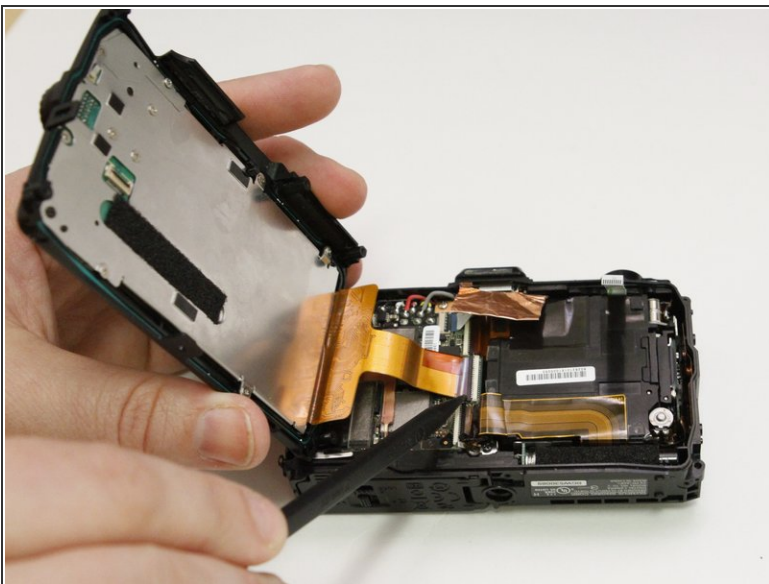


### Step 3



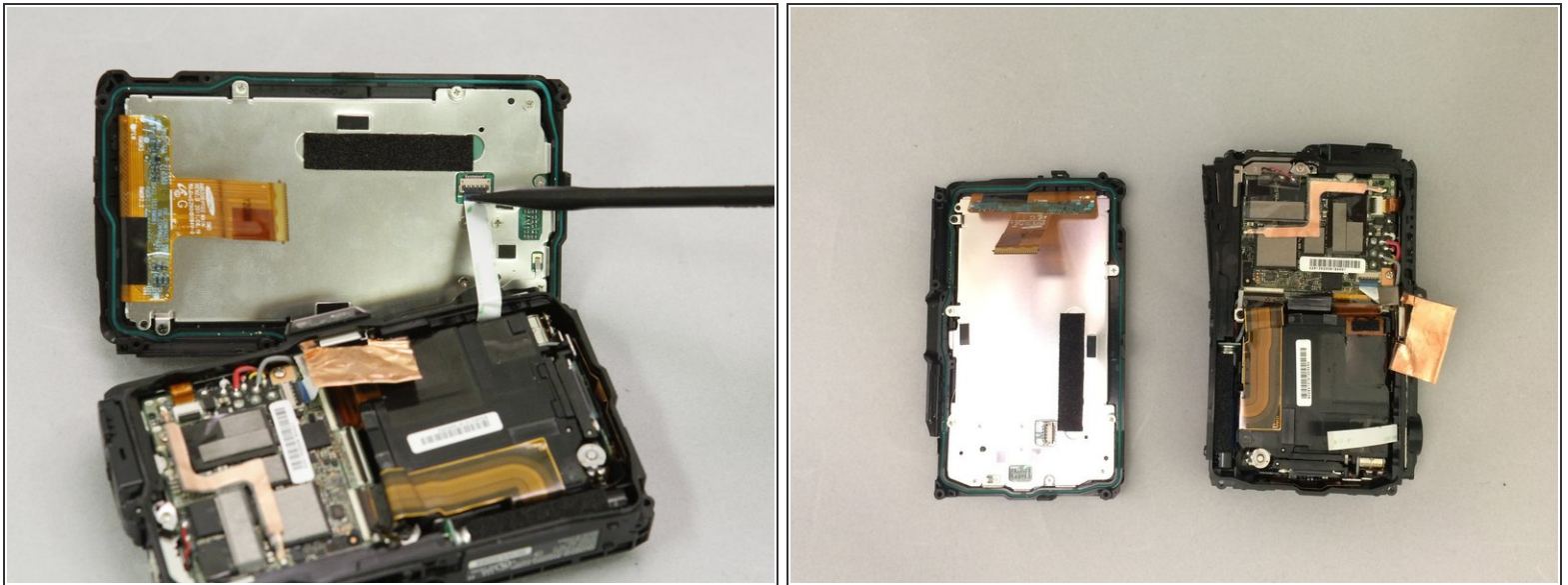
- Locate the clasp for the white ribbon.
- Use the spudger to lift the clasp releasing the ribbon

### Step 4



- Locate the clasp for the orange ribbon in between the motherboard and lens box.
- Use the spudger to lift the clasp releasing the ribbon.

## Step 5



- Next pry up on the white connector using the spudger to free the screen from the device.
- The housing and monitor will be separated.

To reassemble your device, follow these instructions in reverse order.