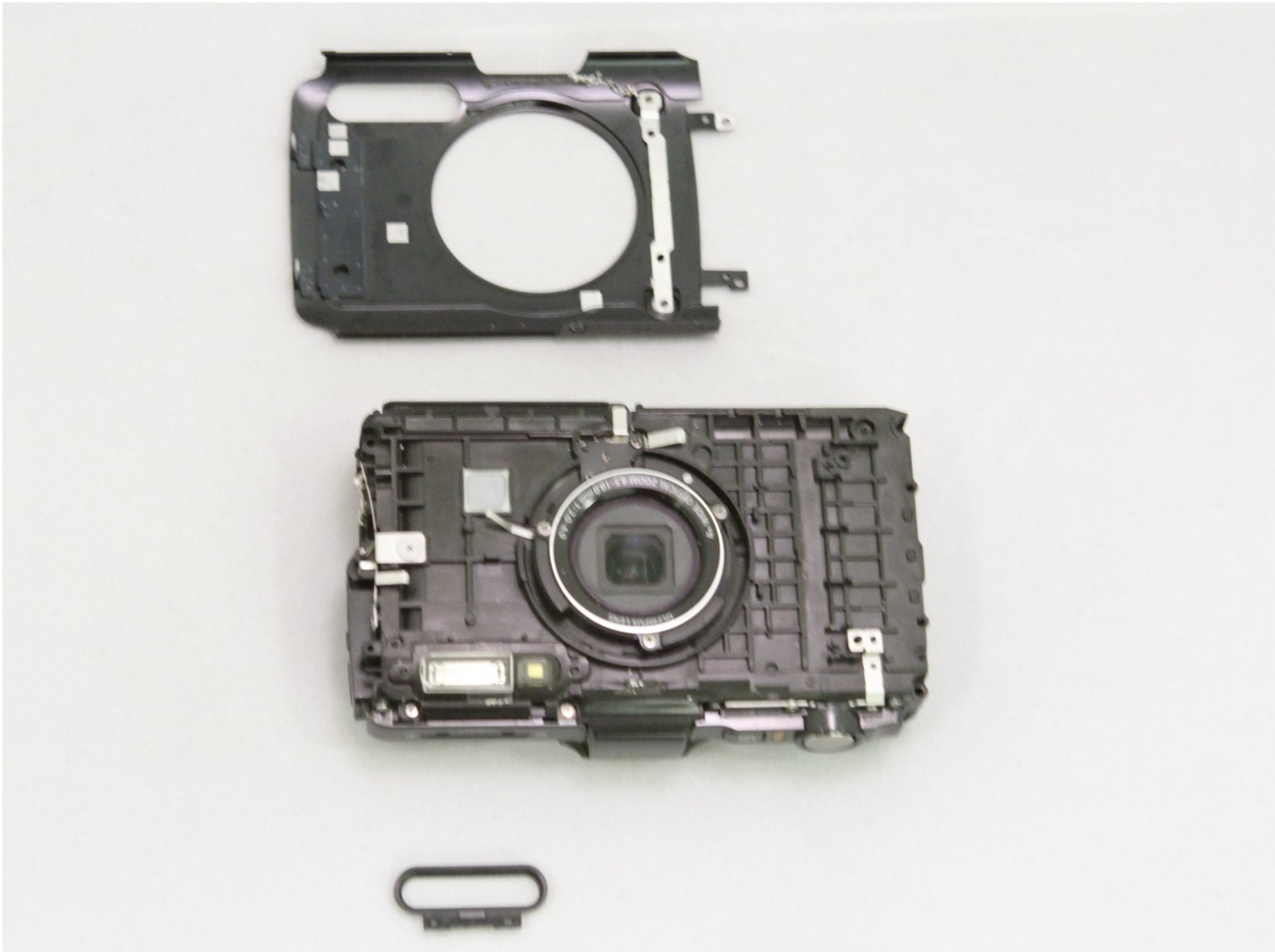




# Olympus Stylus Tough TG-2 iHS Front Case Replacement

(Prerequisite Only)

Written By: Amanda



---

# INTRODUCTION

Prerequisite Only



## TOOLS:

- [iFixit Opening Tools](#) (1)
  - [Phillips #0 Screwdriver](#) (1)
-

## Step 1 — Front Case



- Remove the red ring surrounding the lens by twisting it counter-clockwise

## Step 2



- Remove the 2 Phillips #00 3.4mm screws that secure the faceplate just revealed by the grip.
- On the bottom of the camera, remove the single Phillips #00 3.4mm screw by the tripod socket securing the face plate.

## Step 3



- Use a plastic prying tool to lift and remove the faceplate .
  - There will be some resistance from a sticker just under the GPS logo.
- ⚠ The black plastic ring around the flash may fall as it is no longer secure.

To reassemble your device, follow these instructions in reverse order.