



Olympus Stylus Tough-6000 Lens Cover Replacement

The Lens Cover on your Olympus Stylus Tough-6000 is stuck and not properly responding.

Written By: Shannon Cooney



INTRODUCTION

I will be providing clear and easy steps on how to replace your Lens Cover on your Olympus Stylus Tough-6000 Digital Camera.



TOOLS:

- [Phillips #00 Screwdriver](#) (1)
 - [iFixit Opening Tools](#) (1)
-

Step 1 — Disassemble Camera.



- You will want to disassemble the camera to get to the Lens Cover.

Step 2



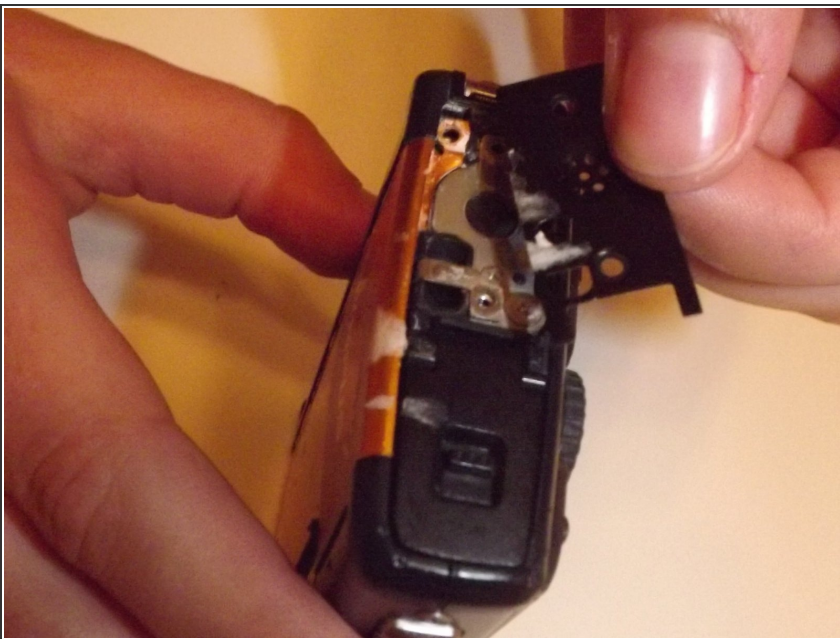
- There are two screws on the right side of the camera.
- Use your Phillips #00 screwdriver and unscrew both screws.

Step 3



- i On the left side of the camera there will be another set of screws.
- Unscrew both screws with the same Phillips #00 screwdriver.

Step 4



- ★ After unscrewing the screws on the left side of the camera you will notice a speaker hat.
- You will be able to pull the speaker hat off.
- You must pull the speaker hat off to be able to pry the front shell of the camera apart.

Step 5



- ❗ Grab your plastic opening tool and begin to pry off the front shell of the camera.
- The front shell will easily come off after a couple of prys.

Step 6



- Once you have the camera shell cover off you can see the lens cover.
- Unscrew the lens cover with your Phillips #00 screwdriver to replace it with a new lens cover.

To reassemble your device, follow these instructions in reverse order.