



Olympus Stylus Tough-6000 On/Off Button Replacement

You have tried numerous times turning on your camera and nothing happens. You know the battery is good so it must be the control button itself.

Written By: Shannon Cooney



INTRODUCTION

This guide will show clear and easy steps on how to replace the On/Off button.



TOOLS:

- [Phillips #00 Screwdriver](#) (1)
 - [iFixit Opening Tools](#) (1)
-

Step 1 — Locate On/Off Button.



- First sit the camera on its bottom. You will be working on the on/off button.

Step 2



- Place camera upward.
- ⓘ You will notice two screws near the on/off button.
- Use your Phillips #00 screwdriver to unscrew the two screws.

Step 3



- ✦ After unscrewing the two screws near the on/off button you will notice a single screw to your right.
- Unscrew the single screw with your Phillips #00 screwdriver.
- This will allow you to pry the panel off.

Step 4



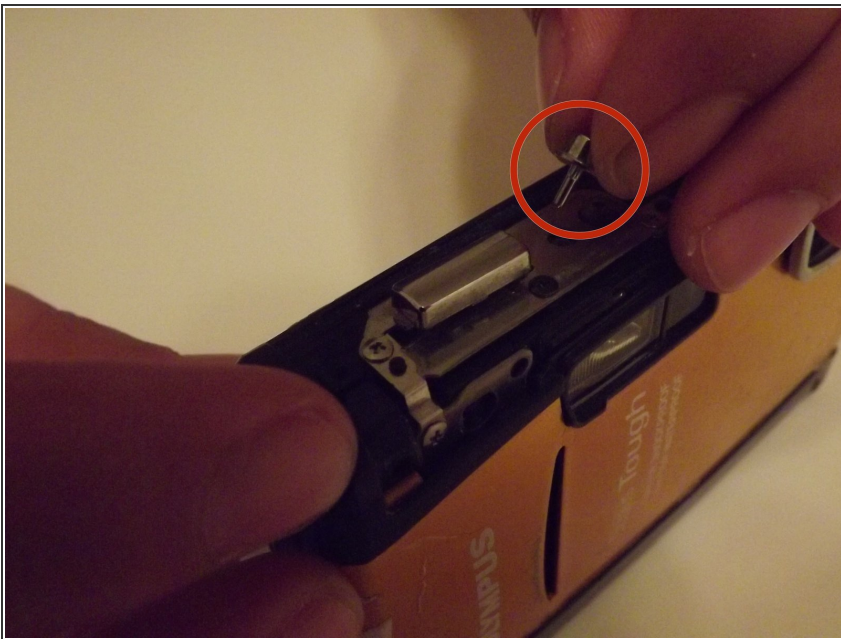
- Grab your plastic opening tool and start prying off the panel.

Step 5



- Once the panel is lifted you will want to lift up the cover for the on/off button.
- ⚠ The actual on/off button is very small and loose so make sure to be careful with it!

Step 6



- You have reached the on/off button.
- You can now replace it!

To reassemble your device, follow these instructions in reverse order.