



# Olympus Stylus Tough-8010 Side Panel Replacement

This guide will walk a user through replacing the side panel of the Olympus Stylus Tough-8010 camera.

Written By: James G Payne



---

## INTRODUCTION

Use this guide to remove the side panel of the Olympus Stylus Tough-8010 camera.

---



### TOOLS:

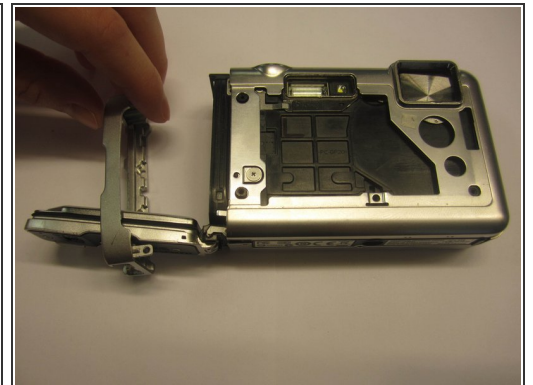
- [T6 Torx Screwdriver](#) (1)
  - [Paper Clip](#) (1)
  - [Phillips #000 Screwdriver](#) (1)
-

## Step 1 — Side Panel



- Remove the three screws (3.2mm) from the front panel using a T-6 screwdriver.
- Take off the smaller front panel cover.
- Carefully remove the larger front cover.

## Step 2



- Remove the top two screws (4.1mm) using a #000 Phillips head screwdriver.
- Remove the two screws (7.9mm) near the control pad. Set metal connector aside.
- Remove the side panel casing.

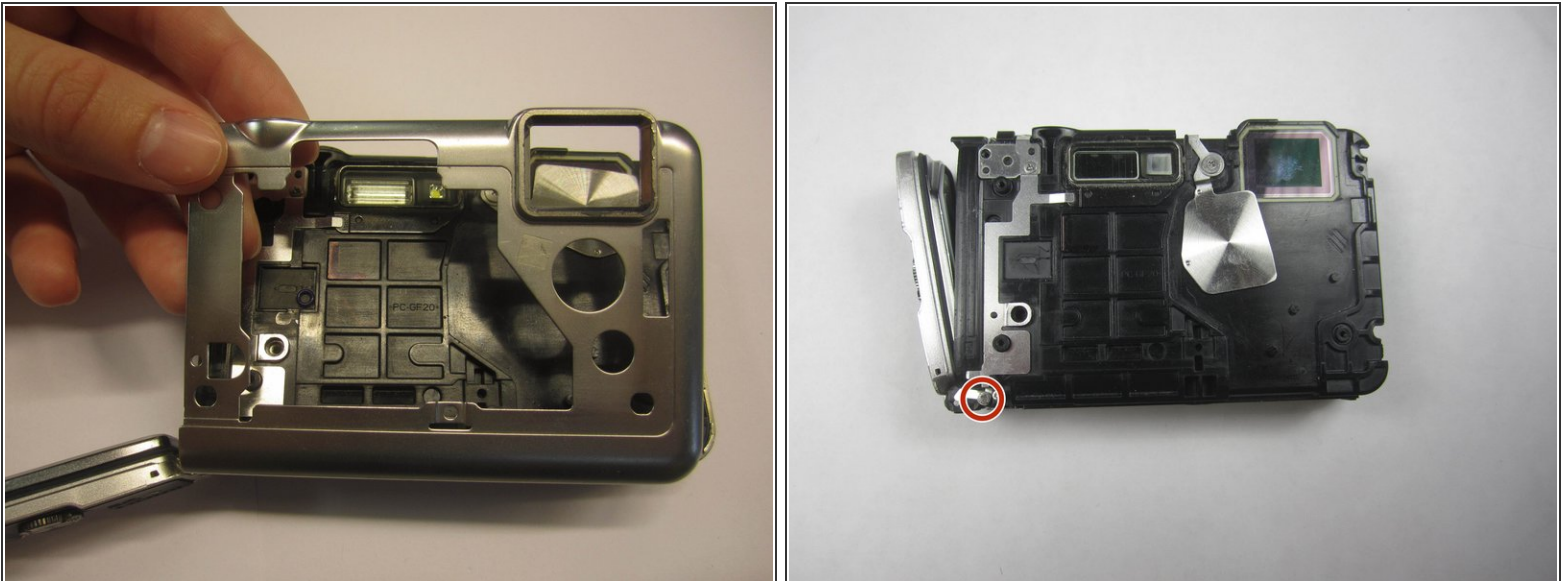


### Step 3



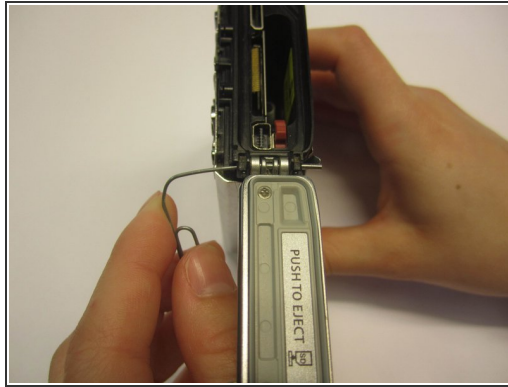
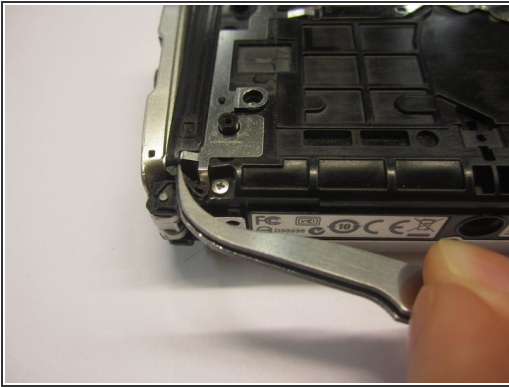
- Using a #000 Philips head screwdriver, remove the two screws (4.1mm) on the right side of the camera.
- Remove the two screws (4.1mm) from the bottom of the camera.
- Remove the single screw (3.2mm) from the front of the camera.

### Step 4



- Carefully remove the front panel piece.
- Remove the screw (7.9mm) from the bottom left hand corner using a #000 Phillips head screwdriver.

## Step 5



- Slightly bend the metal that is covering the side panel axle.
- Using a paperclip, completely push out the metal bar that holds the side panel to the camera.
- Remove the side panel door.

To reassemble your device, follow these instructions in reverse order.