



# Olympus TG-820 iHS Battery Replacement

This guide will provide step by step instructions on how to replace the battery in the Olympus TG-820 iHS camera.

Written By: Leslie Cade



## INTRODUCTION

Having issues with your battery? This guide can assist you in accessing and replacing the battery for the Olympus TG-820 iHS camera.


## Step 1 — Battery



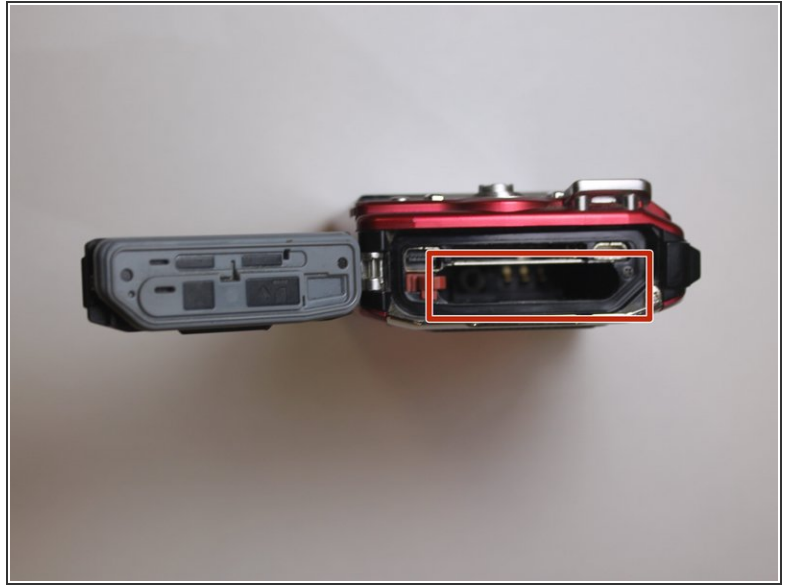
- Orient camera to look directly at battery compartment side as shown.

## Step 2



- Locate the two latches on the battery compartment.
  - First, move the "lock" switch left to reveal red indicator.
  - Next, move the "cover latch" switch downward to reveal red indicator.
-  You have to move the switches in that order for the compartment to unlatch.

### Step 3



- Allow the battery compartment latch to completely open.
- Insert battery with the writing face up.
- ⓘ The bigger slot is for the battery. The smaller slot is for the memory card.
- ⓘ Battery not shown.

To reassemble your device, follow these instructions in reverse order.