



# Olympus TG-820 iHS Lens Replacement

This guide will provide step by step instructions on how to replace the lens in the Olympus TG-820 iHS camera.

Written By: Leslie Cade



# INTRODUCTION

Is your lens out of line or need cleaning? This guide will show how to go about changing the lens.



## TOOLS:

- [Phillips #00 Screwdriver](#) (1)
  - [Phillips H1.5 Screwdriver](#) (1)
-


## Step 1 — Battery



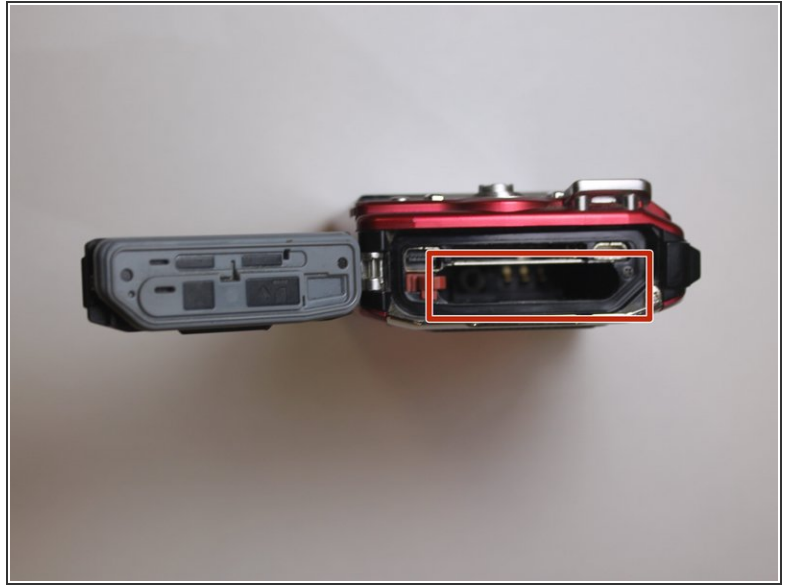
- Orient camera to look directly at battery compartment side as shown.

## Step 2



- Locate the two latches on the battery compartment.
  - First, move the "lock" switch left to reveal red indicator.
  - Next, move the "cover latch" switch downward to reveal red indicator.
-  You have to move the switches in that order for the compartment to unlatch.

### Step 3



- Allow the battery compartment latch to completely open.
- Insert battery with the writing face up.
- ⓘ The bigger slot is for the battery. The smaller slot is for the memory card.
- ⓘ Battery not shown.

## Step 4 — Back Case



- Orient the camera so you are looking at the bottom.
- Remove the three 3.85mm Phillips #00 screws from the bottom of the camera.

## Step 5



- Orient the camera so you are looking at the side plate.
- Remove the two 3.15mm Phillips #00 screws from the side plate of the camera.



## Step 6



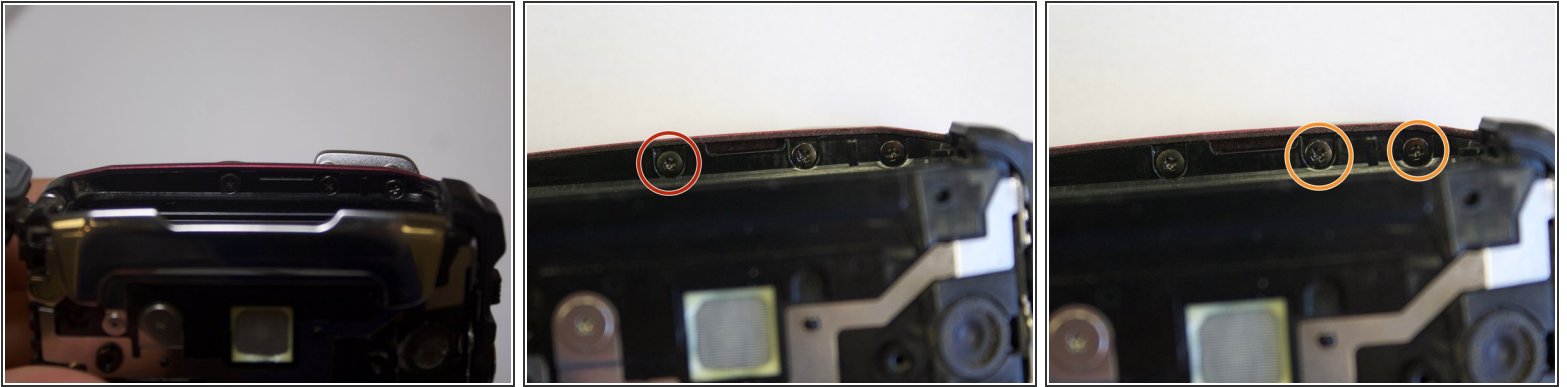
- Orient the camera so you are looking at the front plate.
- Remove the two 3.8mm with the Phillips H1.5 from the front plate.
- Remove the "Olympus" plate.

## Step 7



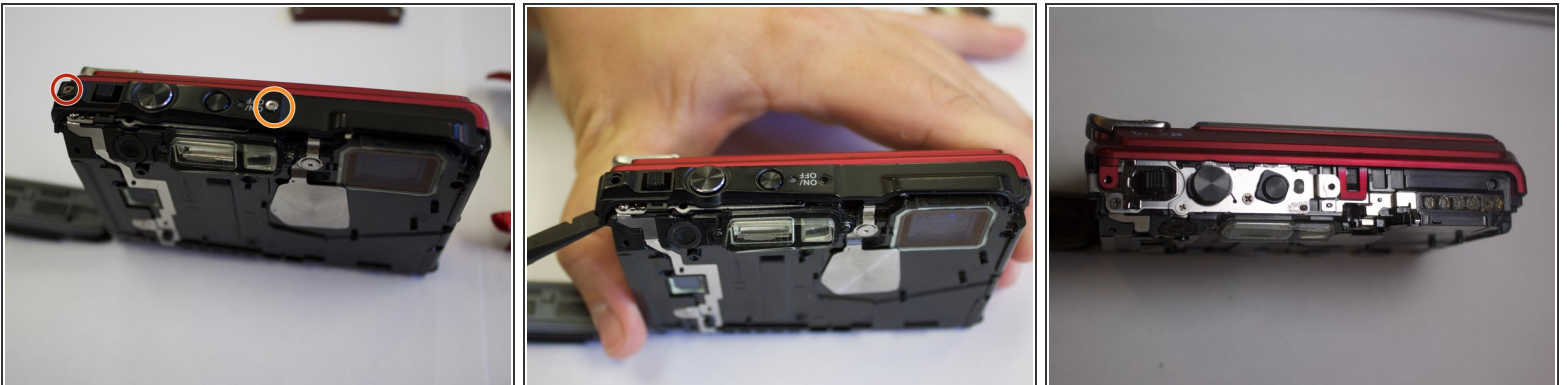
- Remove face plate.

## Step 8



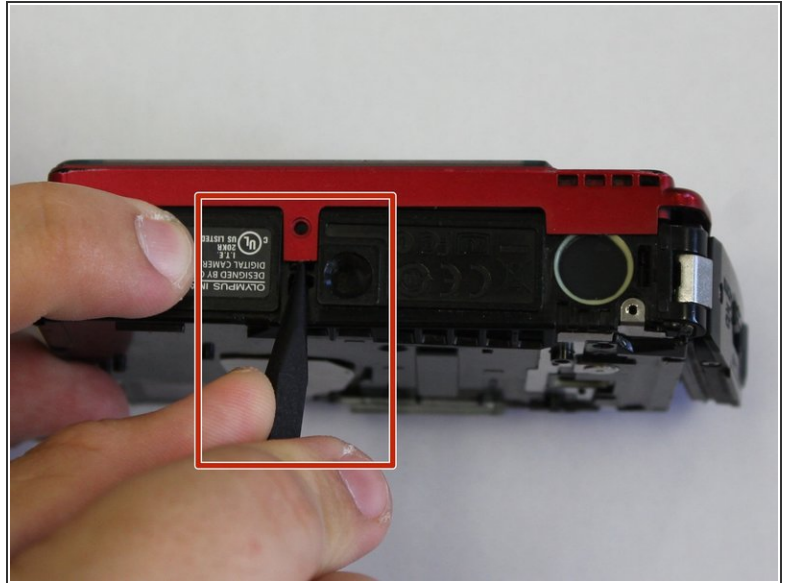
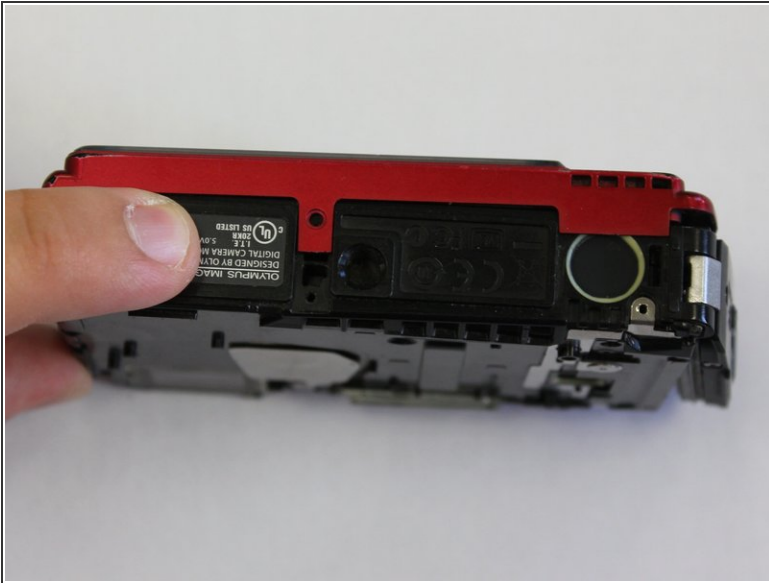
- Locate three small black screws inside of the battery compartment.
- Remove the 3.85mm Phillips #00 screw on the far left side.
- Remove the two 5mm Phillips #00 screws on the right side

## Step 9



- Orient the camera to be look at the top.
- Remove the 5.4mm Phillips #00 screw on the top left side.
- Remove the 7.4mm Phillips #00 screw next to the "ON/OFF" label.
- Pry off top button plate with black nylon spudger.

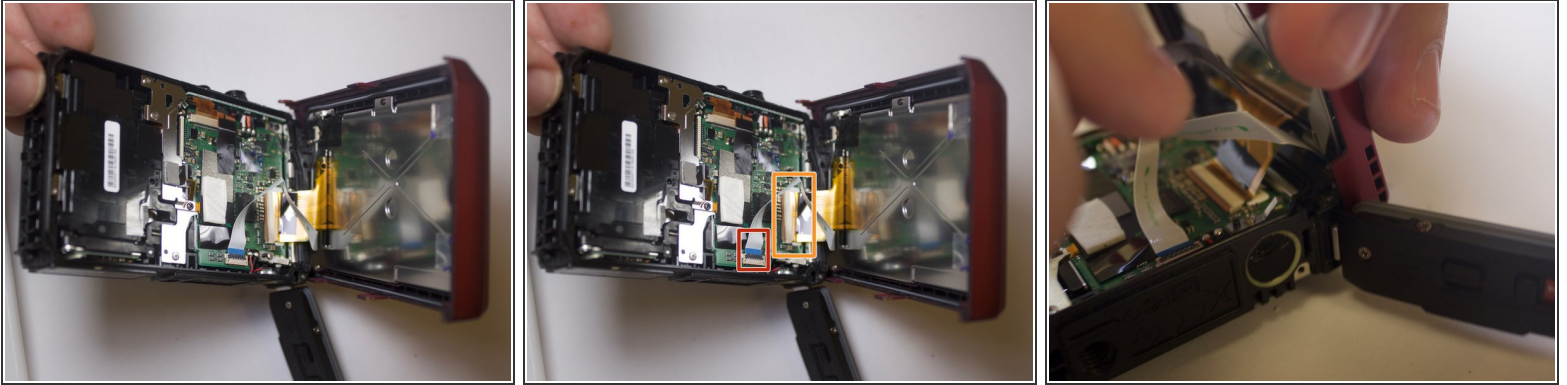
## Step 10



- Rotate to bottom of camera and locate bottom latch.
  - Wedge black nylon spudger in between bottom latch and camera base to release LCD Screen from camera.
  - Push firmly apart.
- ⚠ Some buttons might fall out.

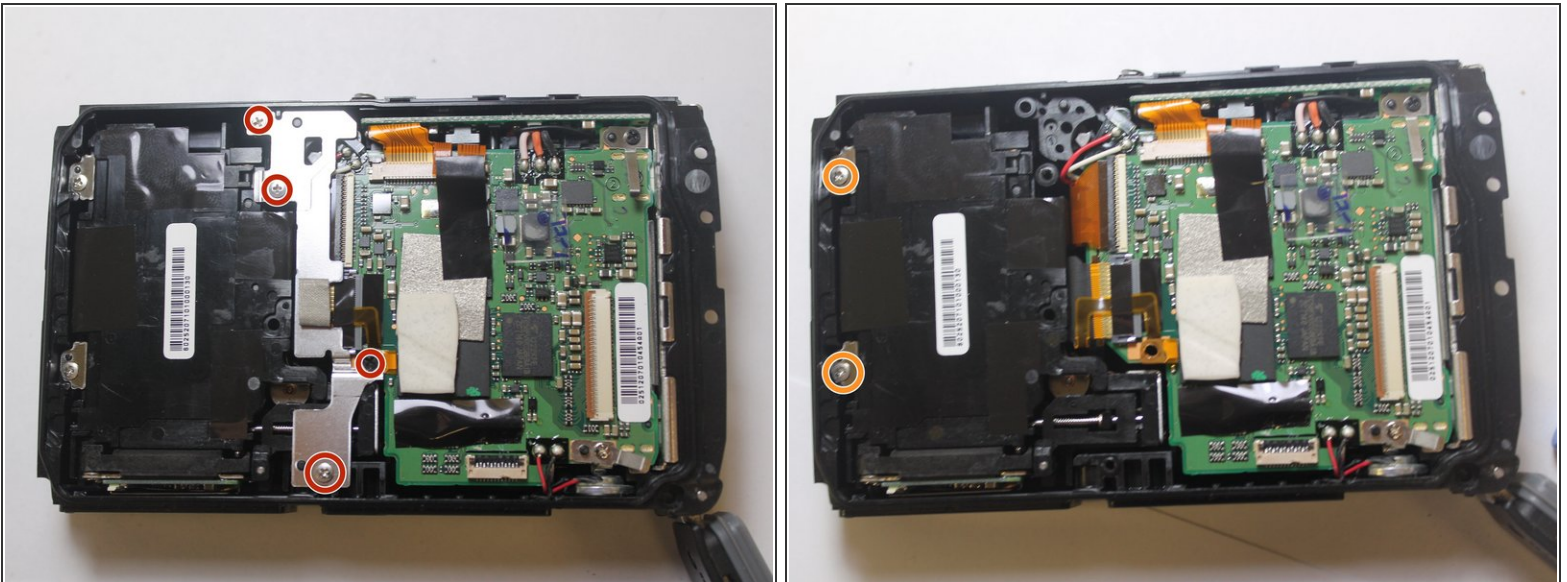


## Step 11



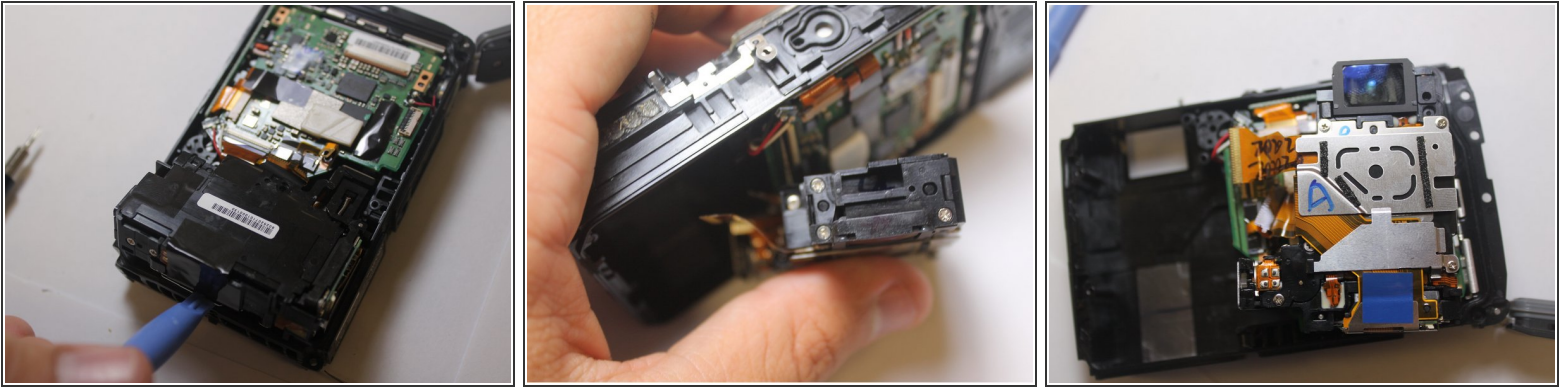
- Orient the camera to the LCD screen side that is now wedged open.
- Locate the white ribbon cable and pull out from motherboard.
- Locate the brown ribbon cable and pull out from motherboard.

## Step 12 — Lens



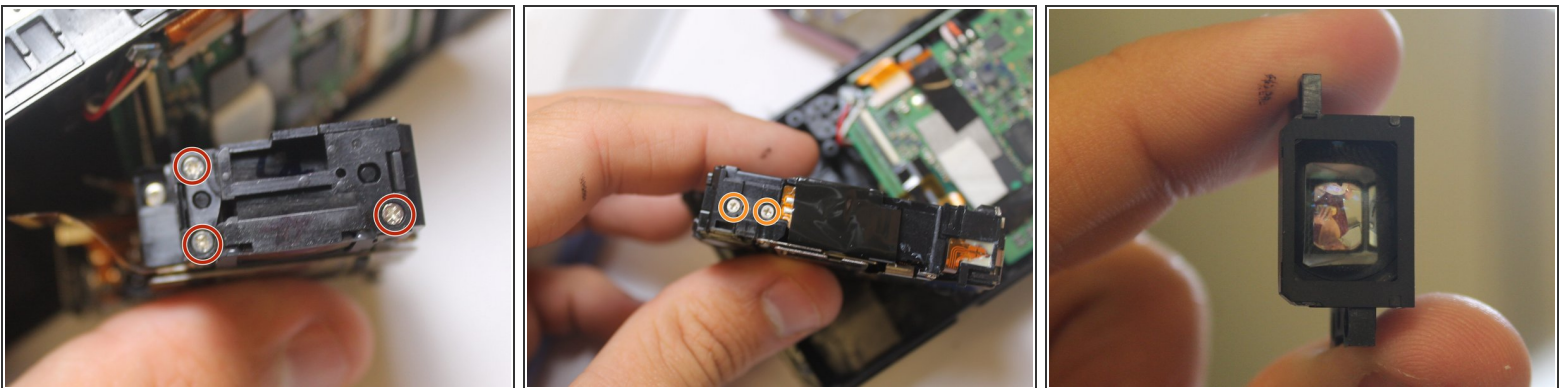
- Remove the four silver and one black screws using the Phillips #000 screwdriver from the metal holding plate and lift the plate out of the camera
- Locate and remove the two screws on the left side of the camera using the Phillips #000, then remove the metal plates they rest on.

## Step 13



- Using the plastic opening tool, pry the black component out of the camera's casing.
- The black component is connected to the motherboard using some ribbon cables, it is not necessary to disconnect these cables to replace the lens.
- The black component will just fold out for access to the lens mechanism

## Step 14



- Locate the three silver screws on the top of the lens, and remove them using the Phillips #000 screwdriver
- Locate the two screws on the right side of the lens, and remove them with the Phillips #000 screwdriver.
- After removing the screws, the lens will just lift free from the black component.

To reassemble your device, follow these instructions in reverse order.