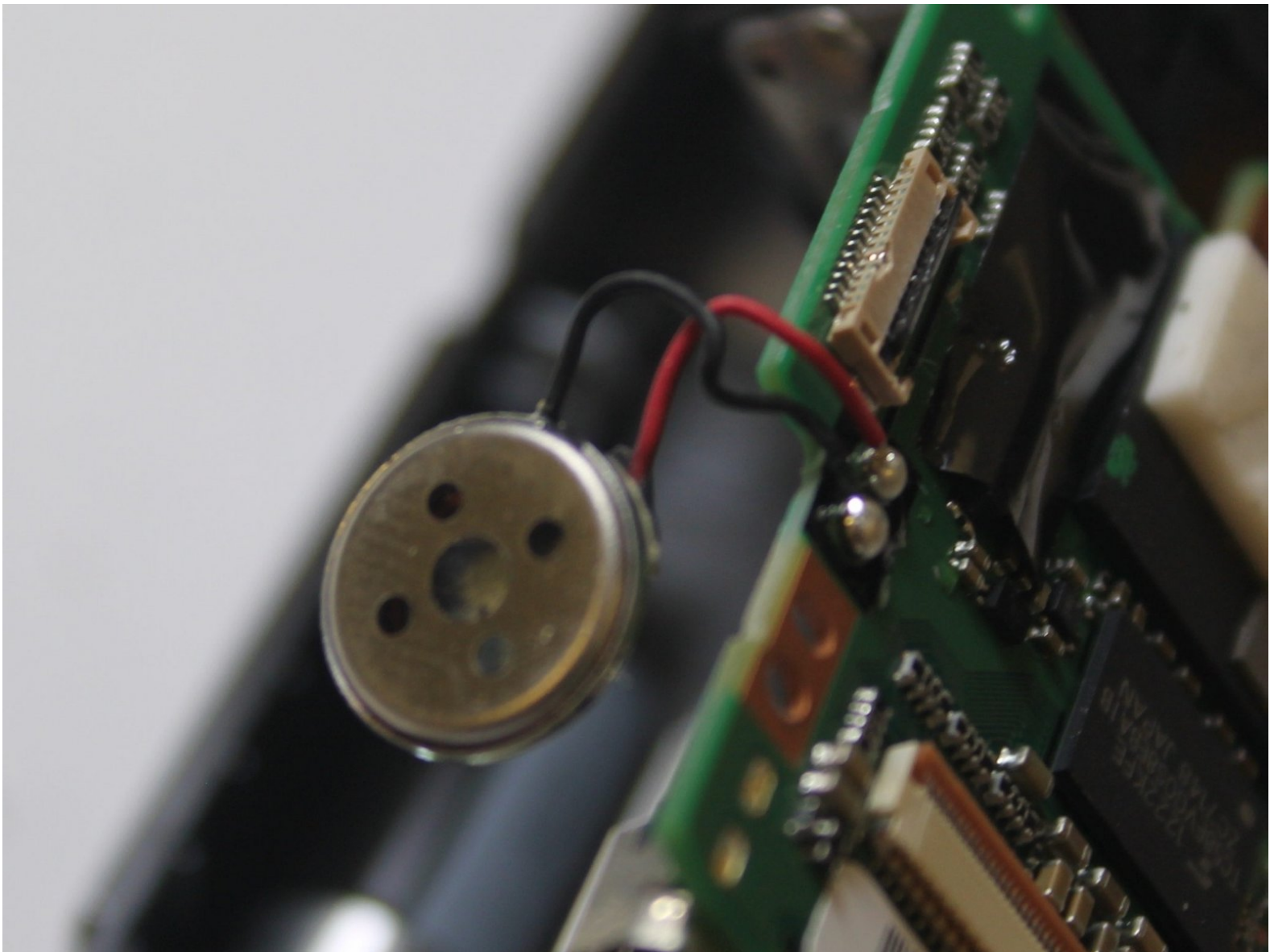




Olympus TG-820 iHS Speaker Replacement

This guide will provide step-by-step instructions on how to replace the speaker of the Olympus TG-820 iHS camera.

Written By: Larissa Knight



INTRODUCTION

Can you not hear sound out of your camera or does it sound distorted? Try replacing the speaker of the camera.

TOOLS:

- [Phillips #00 Screwdriver](#) (1)
 - [Phillips H1.5 Screwdriver](#) (1)
-


Step 1 — Battery



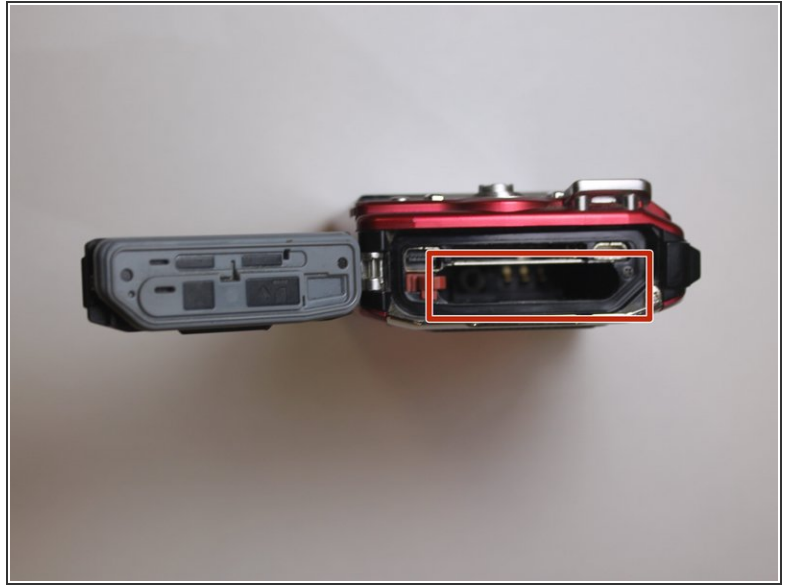
- Orient camera to look directly at battery compartment side as shown.

Step 2



- Locate the two latches on the battery compartment.
 - First, move the "lock" switch left to reveal red indicator.
 - Next, move the "cover latch" switch downward to reveal red indicator.
-  You have to move the switches in that order for the compartment to unlatch.

Step 3



- Allow the battery compartment latch to completely open.
- Insert battery with the writing face up.
- ⓘ The bigger slot is for the battery. The smaller slot is for the memory card.
- ⓘ Battery not shown.

Step 4 — Back Case



- Orient the camera so you are looking at the bottom.
- Remove the three 3.85mm Phillips #00 screws from the bottom of the camera.

Step 5



- Orient the camera so you are looking at the side plate.
- Remove the two 3.15mm Phillips #00 screws from the side plate of the camera.

Step 6



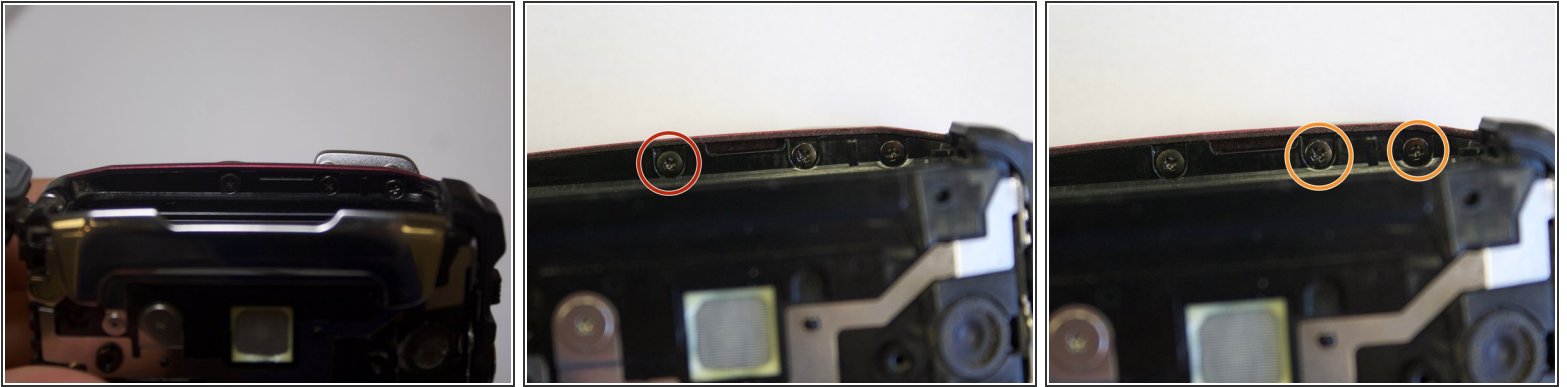
- Orient the camera so you are looking at the front plate.
- Remove the two 3.8mm with the Phillips H1.5 from the front plate.
- Remove the "Olympus" plate.

Step 7



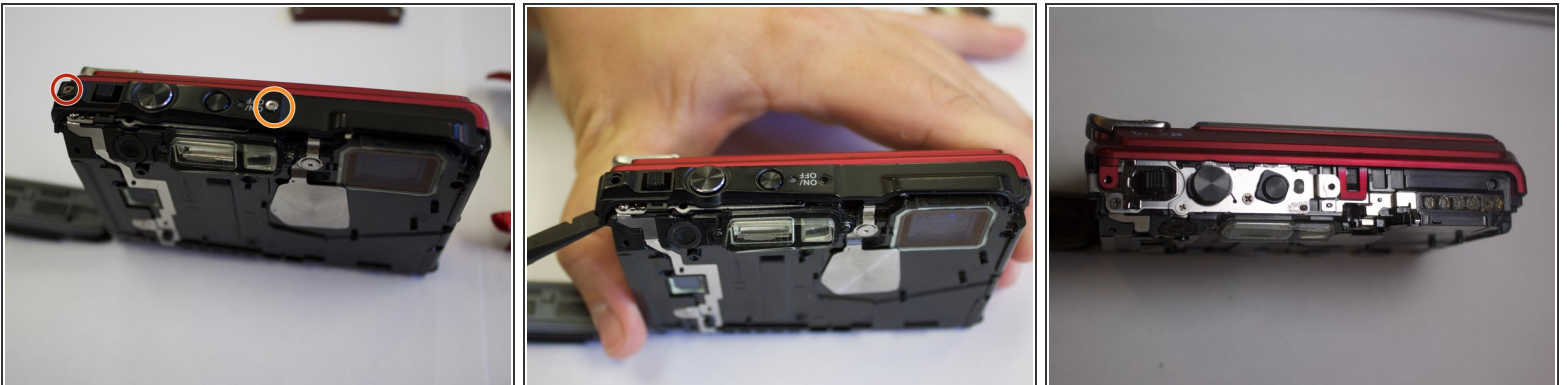
- Remove face plate.

Step 8



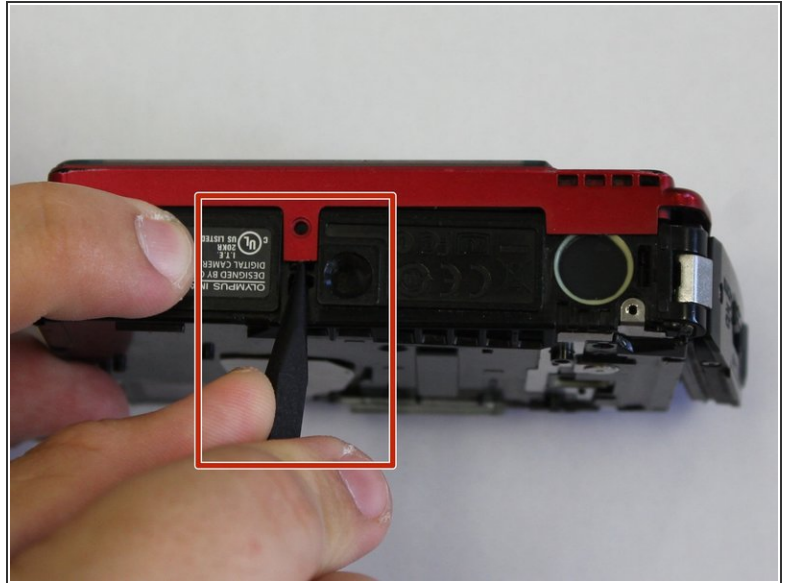
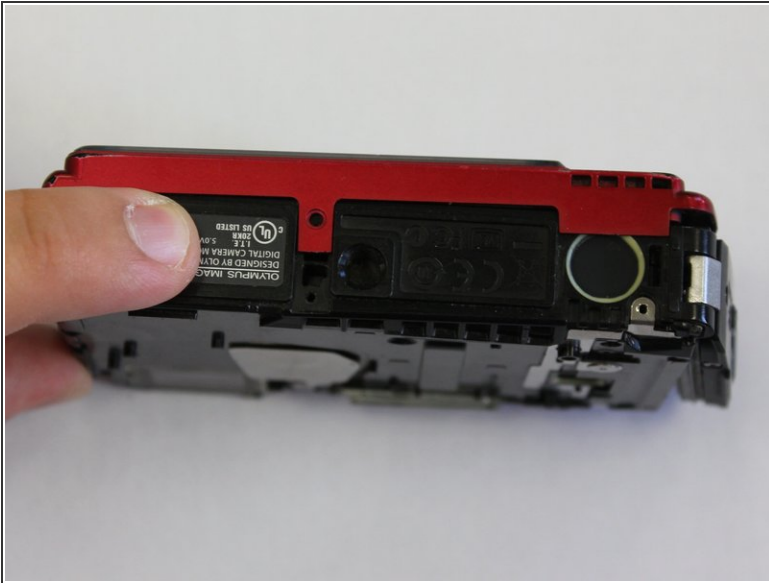
- Locate three small black screws inside of the battery compartment.
- Remove the 3.85mm Phillips #00 screw on the far left side.
- Remove the two 5mm Phillips #00 screws on the right side

Step 9



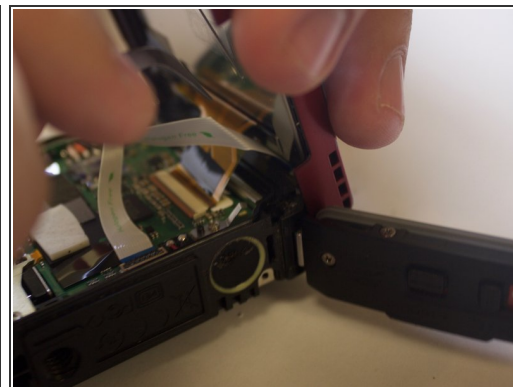
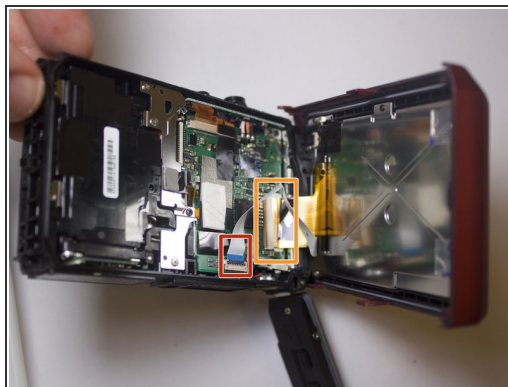
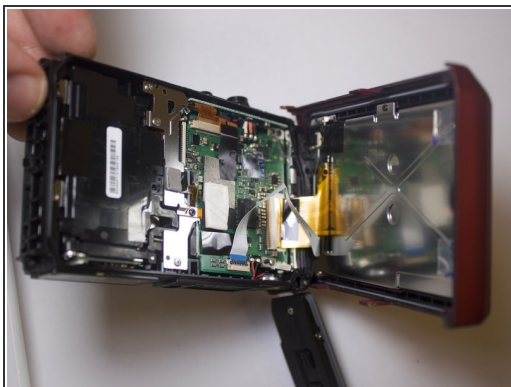
- Orient the camera to be look at the top.
- Remove the 5.4mm Phillips #00 screw on the top left side.
- Remove the 7.4mm Phillips #00 screw next to the "ON/OFF" label.
- Pry off top button plate with black nylon spudger.

Step 10



- Rotate to bottom of camera and locate bottom latch.
 - Wedge black nylon spudger in between bottom latch and camera base to release LCD Screen from camera.
 - Push firmly apart.
- ⚠ Some buttons might fall out.

Step 11



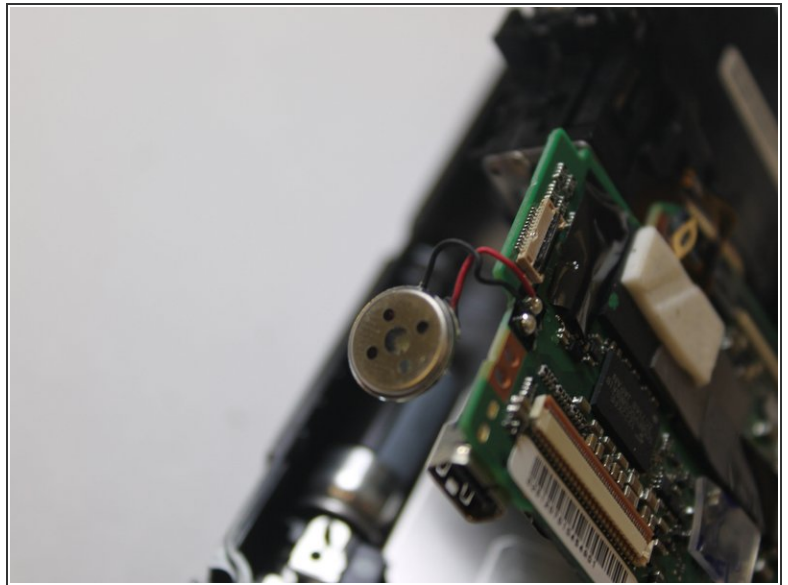
- Orient the camera to the LCD screen side that is now wedged open.
- Locate the white ribbon cable and pull out from motherboard.
- Locate the brown ribbon cable and pull out from motherboard.

Step 12 — Speaker



- Locate the speaker on the bottom right side of the camera
- Use the spudger to lift the speaker out of the camera.

Step 13



- Next locate the solder points which connect the speaker to the motherboard, using the soldering kit(not pictured) the connection points can be removed, and the speaker can then be removed completely from the camera.
- Learn how to solder [here](#).

To reassemble your device, follow these instructions in reverse order.