



Olympus Tough TG-1 Backplate Replacement

How to replace an Olympus Tough TG-1 backplate.

Written By: Grant Lee

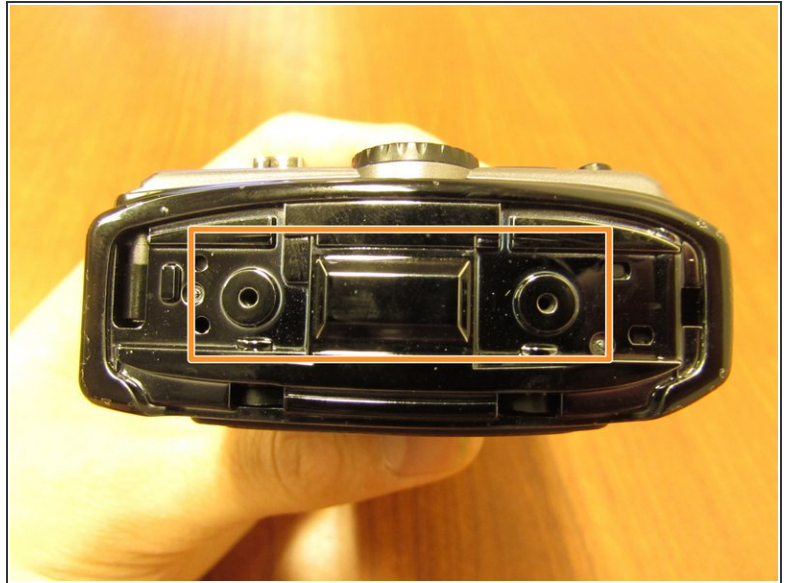




TOOLS:

- [Phillips #00 Screwdriver](#) (1)
 - [iFixit Opening Tools](#) (1)
-

Step 1 — Clip Side Repair



- Remove both 6 mm screws from the clip side of the camera.
 - After you have removed the two screws, remove both the clip and the plate behind the clip so that the inside of the camera is exposed.
- i** If one of more of the clips appear to be broken, the back plate might need to be replaced.

Step 2 — Battery Removal



- Release both latches on the battery compartment on the bottom of the camera to open the door.

Step 3



- After you have removed the latch, open the compartment door to remove the battery.
- ⚠ The batteries contain highly acidic contents. If the battery has leaked or ruptured while inside the compartment, there may be damage to the camera's circuitry. Carefully clean out any residue from the battery using latex gloves and tissues.
- ⓘ If the compartment door is loose, check the hinge or the locking pieces under the rubber pad. To do this, unscrew and remove the rubber and metal plate on the door.

Step 4 — Top of Camera



- The top of the camera does not contain screws. You do not need to remove anything from the top of the camera.

Step 5 — Plug Side



- Remove the two 5 mm screws on the side of the camera with the plug.
- Open the compartment door and remove both 6 mm screws inside of the compartment door. This will allow you to remove the tan piece held by the screws.

Step 6 — Bottom



- Turn the camera so that you are looking at the bottom of the camera.
- Remove the two 4 mm screws from the bottom of the camera.
- i* The screws are different. The rear screw is has an unthreaded shank to locate the outer shell while screwing into the inner frame.

Step 7 — Front Panel



- Use the plastic opening tool to remove both components of the front panel. This includes the black part on the outside of the front panel and the main silver panel.
- ⓘ Once every screw and panel is removed, you can replace the backplate to make your camera weatherproof again.

To reassemble your device, follow these instructions in reverse order.